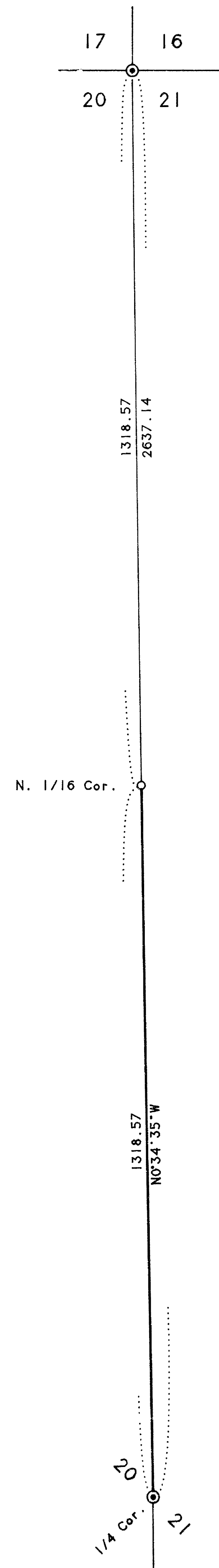


### MAP OF SURVEY

In the N.W. 1/4 of Section 21, T. 38 S.,  
R 4 E., W.M. Jackson County, Oregon



SURVEY FOR:

KOGAP Manufacturing Co.  
P.O. Box 1608  
Medford, OR 97501

SURVEY BY:

L.J. Friar & Associates, P.C.  
Consulting Land Surveyors  
304 South Holly Street  
Medford, Oregon 97501  
Phone: (503) 772-2782

LEGEND:

- ⊙ - Found B.L.M. brass capped monument & accessories.
- - Set 5/8" x 30" iron pin with plastic cap mkd. L.J. FRIAR & ASSOC. See narrative for accessories.

BASIS OF BEARINGS: Solar Observation

DATE: July 1, 1994

SCALE: 1" = 200'

UNIT OF MEASUREMENT: FEET

SURVEY NARRATIVE TO COMPLY WITH O.R.S. 209.250

PURPOSE: To mark and blaze the line between the W.1/4 and the N.1/16 on the West line of Section 21 and set said N.1/16 corner.

PROCEDURE: Tied from the N.W. corner to the W.1/4 corner of Section 21. Ran random traverse from W.1/4 to N.1/16 and pulled offsets from the traverse points and blazed and flagged the line per client's specifications. At the N.1/16 corner the following accessories were taken:

A 4" Fir bears S.43°E.. 5.7'. mkd. XBT.

A 7" Fir bears N.42°W.. 17.0'. mkd. N1/16S20BT.

