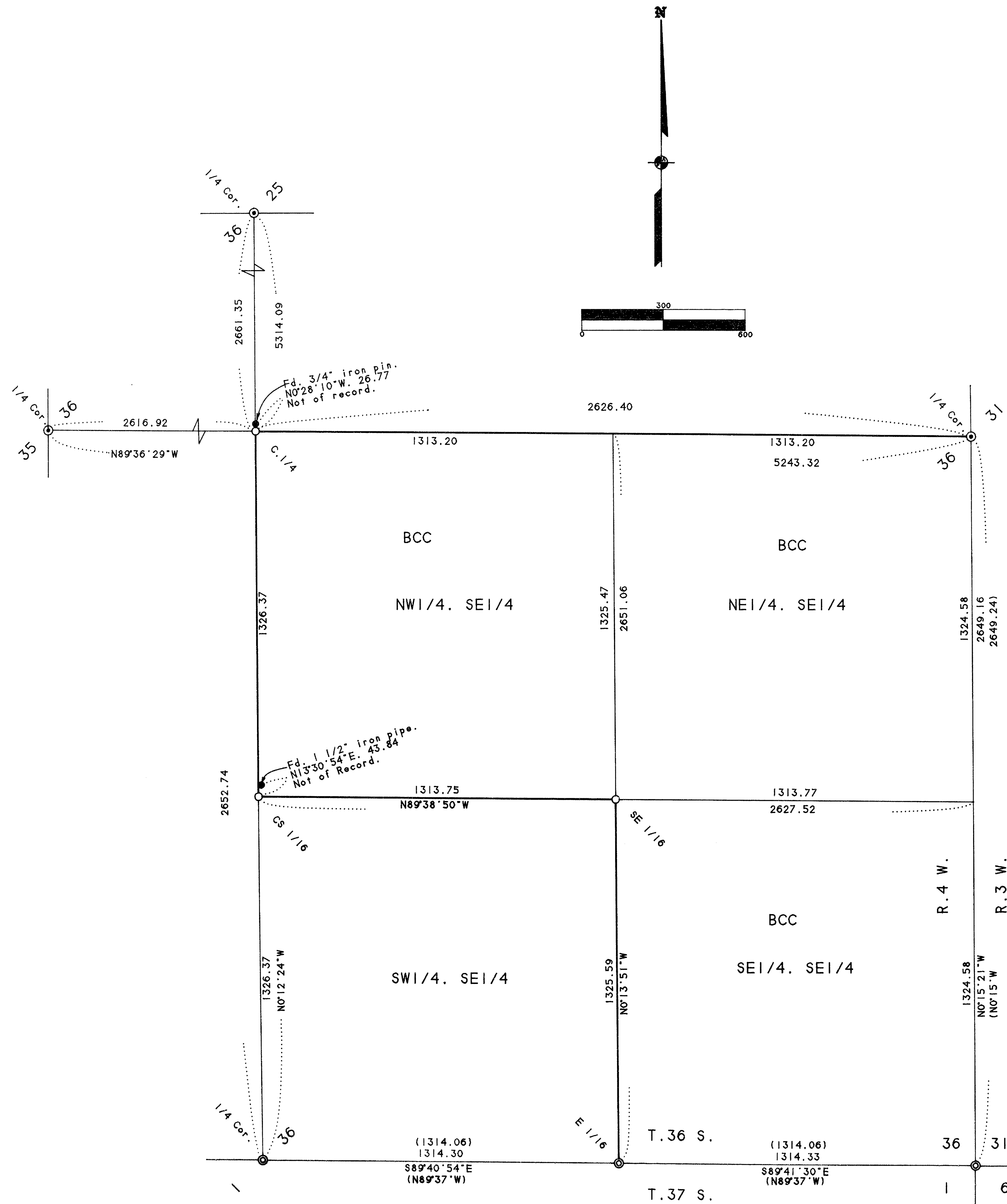


MAP OF SURVEY

A portion of the Southeast 1/4 of Section 36,
T. 36 S., R. 4 W., W. M. Jackson County, Oregon



SURVEY FOR:

Boise Cascade Corporation
P.O. Box 100
Medford, OR 97501

SURVEY BY:

L.J. Friar & Associates, P.C.
Consulting Land Surveyors
304 South Holly Street
Medford, Oregon 97501
Phone: (503) 772-2782

LEGEND:

- ⊙ - Found County Surveyor's brass capped monument & accessories.
- ⊙ - Found B.L.M. brass capped monument & accessories.
- - Set 5/8" x 30" iron pin with plastic cap mkd. L.J. FRIAR & ASSOC. See narrative for accessories.
- () - Record data per B.L.M. official survey. BCC = Boise Cascade Land
- - Line posted and blazed per contract specifications.

BASIS OF BEARINGS: Solar Observation.

DATE: July 29, 1994

SCALE: 1" = 300'

UNIT OF MEASUREMENT = Feet

SURVEY NARRATIVE TO COMPLY WITH O.R.S. 209.250

PURPOSE:

To survey, monument and blaze the client's property lines per contract specifications.

PROCEDURE:

Tied exterior sectional corners into a closed traverse. Calculated the fractional corners in the Southeast quarter and set same. Lines were blazed, painted and tagged according to contract specifications. Accessories to subdivisional corners set are as follows:

At the S.E. 1/16 corner of Section 36:
A 3" Oak brs. N.01°E., 18.1', Mkd. XBT.
An 8" Oak brs. S.78°E., 13.2', Mkd. SE1/16S36BT.

At the C.S. 1/16 corner of Section 36:
A 6" Oak brs. N.79°E., 32.0', Mkd. CS1/16S36BT.
An 8" Oak brs. S.18°E., 21.4', Mkd. CS1/16S36BT.

At the C. 1/4 corner of Section 36:
A 4" Oak brs. N.56°E., 25.8', Mkd. XBT.
A 12" Madrone brs. S.74°E., 23.1', Mkd. C1/4S36BT.
A 10" Oak brs. S.53°W., 10.3', Mkd. C1/4S36BT.
A 7" Fir brs. N.41°W., 10.7', Mkd. C1/4S36BT.

REGISTERED
PROFESSIONAL
LAND SURVEYOR

James E. Hibbs
OREGON
JULY 17, 1988
JAMES E. HIBBS
2234
Renewal Date 6-30-95

** RECEIVED **
Date 8-12-94 By GF
This survey consists of:
1. Plat Map
0. Narrative
JAMES E. HIBBS
SURVEYOR

Sheet 1 of 1