

MAP OF SURVEY

Located in portions of Section 18, T.37 S.,
R.2 W., W.M.

SURVEY FOR:
Boise Cascade Corporation
P.O. Box 100
Medford, OR 97501

SURVEY BY:
L.J. Friar & Associates, P.C.
Consulting Land Surveyors
304 South Holly Street
Medford, Oregon 97501
Phone: (503) 772-2782

LEGEND:

- ⊙ - Found County Surveyor's brass capped monument & accessories.
- - Found 5/8" iron pin w/ plastic cap mkd. R.ROBERTS PLS1656 per RS 8750.
- - Set 5/8" x 30" iron pin with plastic cap mkd. L.J. FRIAR & ASSOC. See narrative for accessories.
- CL - Centerline () - Gov't record data as shown.
- RS - Recorded Survey #.

BASIS OF BEARINGS: E. line Section 18 per RS 8750.

DATE: April 28, 1994 SCALE: 1" = 300' UNIT OF MEASUREMENT - Feet

SURVEY NARRATIVE TO COMPLY WITH O.R.S. 209.250

PURPOSE: To survey, monument and blaze the property lines per contract specifications.

PROCEDURE: Tied all exterior corners of record into a series of closed traverses. The North 1/4 corner was re-established by holding the Gov't. record distance from the N-S creek. A straight proportion was not used since this would place the corner position approximately 22 feet further West than the Gov't notes on hand to search the area for original evidence of the corner or accessories. None was found. Fractionalized the remainder of the Section by proportion to Gov't record. Lines were blazed, painted and tagged according to contract specifications. Accessories to subdivisional corners set are as follows:

At the W. 1/16 corner common to Sections 7 & 18:
An 8" Black Oak brs. S.13°W.. 30.6". Mkd. W1/16S18BT.
A 4" Fir brs. N.02°W.. 13.7". Mkd. XBT.

At the 1/4 corner common to Section 7 & 18:
A 3" Fir brs. N.56°E.. 38.1". Mkd. XBT.
A 12" Madrone brs. S.52°E.. 38.4". Mkd. 1/4S18BT.
An 8" Fir brs. S.54°W.. 39.1". Mkd. 1/4S18BT.
An 8" Fir brs. N.54°W.. 32.9". Mkd. 1/4S7BT.

At the E. 1/16 corner common to Sections 7 & 18:
A 3" Oak brs. S.60°W.. 36.0". Mkd. XBT.
A 6" Fir brs. N.20°W.. 12.0". Mkd. E1/16S7BT.

At the NE 1/16 corner of Section 18:
A 12" Fir brs. N.65°E.. 12.9". Mkd. NE1/16S18BT.
A 12" Pine brs. S.48°W.. 14.6". Mkd. NE1/16S18BT.

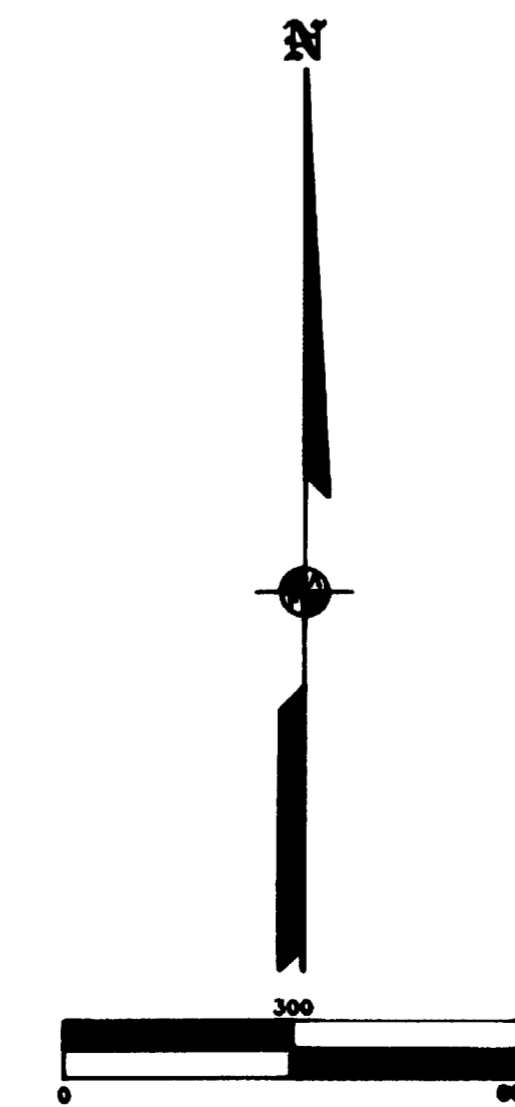
At the CW 1/16 corner of Section 18:
A 6" Pine brs. N.10°E.. 28.7". Mkd. CW1/16S18BT.
A 12" Oak brs. S.30°E.. 14.4". Mkd. CW1/16S18BT.

At the CE 1/16 corner of Section 18:
A 3" Pine brs. N.82°E.. 17.0". Mkd. XBT.
A 6" Fir brs. S.17°W.. 4.7". Mkd. CE1/16S18BT.

At the W. 1/16 corner common to Sections 18 & 19:
An 8" Pine brs. N.14°E.. 3.2". Mkd. W1/16S18BT.
A 4" Pine brs. S.20°E.. 4.3". Mkd. XBT.

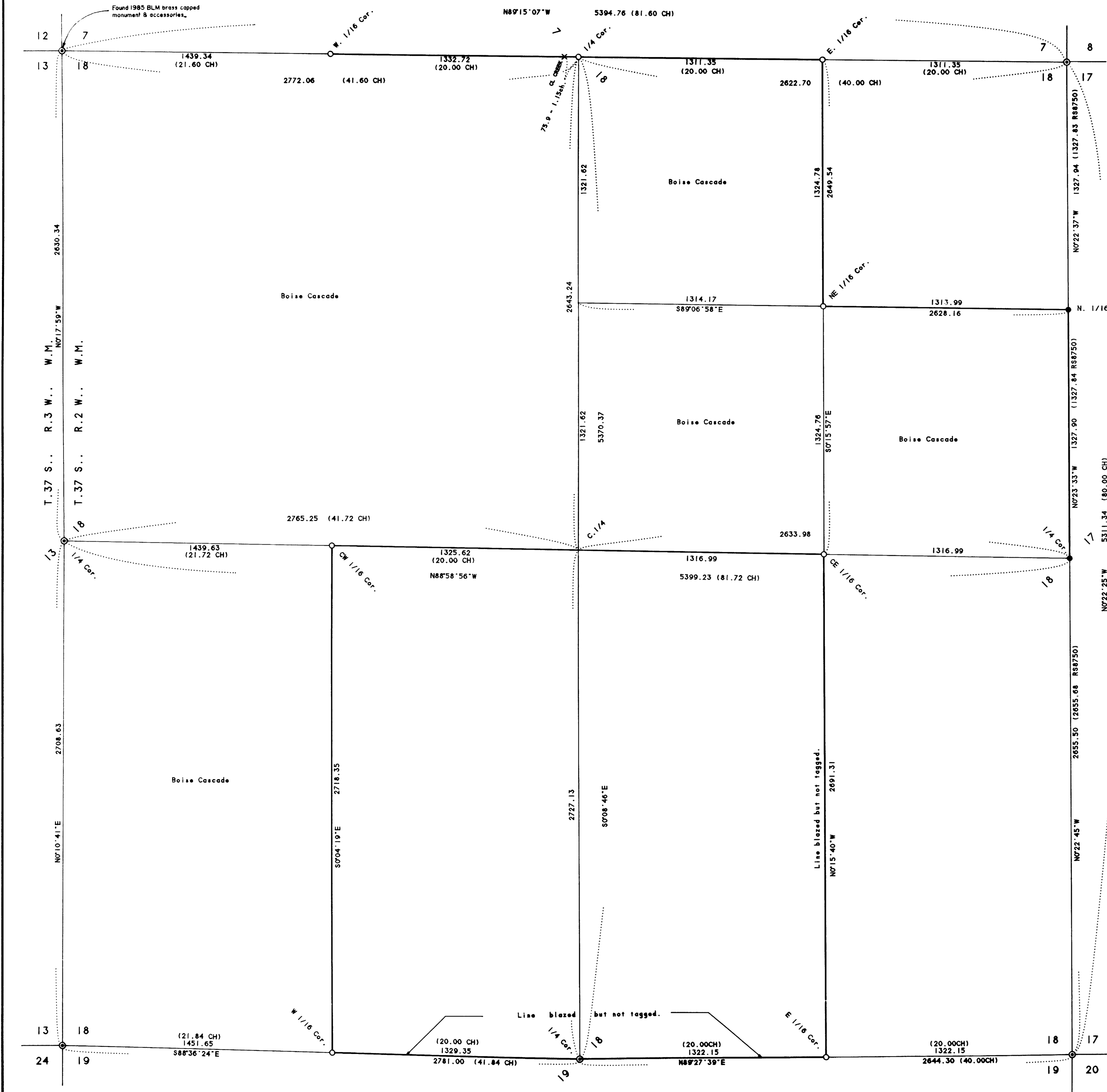
At the E. 1/16 corner common to Sections 18 & 19:
An 8" Fir brs. N.35°E.. 12.8". Mkd. E1/16S18BT.
A 6" Fir brs. S.55°E.. 7.5". Mkd. E1/16S19BT.

AFFIDAVIT OF CORRECTION
O.R.94-18751



RECEIVED
Date 5-5-94 By [Signature]
This survey consists of:
1 sheet(s) Map
0 page(s) Narrative
JACKSON COUNTY SURVEYOR

REGISTERED
PROFESSIONAL
LAND SURVEYOR
JAMES E. FRIAR
JULY 17, 1988
JAMES E. FRIAR
2234
SEP 1989 0-30-93



372W18 TL'S 400 & 401

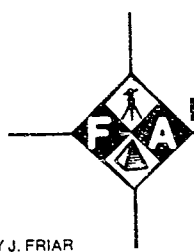
NOV 1994 SCALE - 1 inch = 300 Feet

Sheet(s) of

94-18751

5.00
6.00 Surv.

3:12



L.J. FRIAR AND ASSOCIATES

13998

CONSULTING LAND SURVEYORS

717 WEST TENTH STREET, SUITE 1
MEDFORD, OREGON 97501

LARRY J. FRIAR

TELEPHONE
503-772-2782

AFFIDAVIT OF CORRECTION
Pursuant to O.R.S. 209.255

I, James E. Hibbs, Registered Professional Land Surveyor of the State of Oregon No. 2234, do hereby state that I have discovered a drafting error on that survey for Boise Cascade Corporation, filed May 5, 1994 as Survey No. 13998 in the Jackson County Surveyor's office. The error is in the labeling of the bearing on to the 6" Fir bearing tree at the East 1/16 corner common to Sections 18 & 19. The map shows S.55°E. The correct labeling should read S.5°E.

REGISTERED
PROFESSIONAL
LAND SURVEYOR

James E. Hibbs

OREGON
JULY 17, 1986
JAMES E. HIBBS
2234

Expires 6-30-95

I, Verlyn Thomas, Jackson County Surveyor, hereby certify that I have examined this Affidavit of Correction, and that the changes are permitted in accordance with O.R.S. 209.255.

Verlyn Thomas

Verlyn Thomas, Jackson Co. Surveyor

Jackson County, Oregon
Recorded
OFFICIAL RECORDS

3:12 MAY 17 1994 P.M.

KATHLEEN S. BECKETT
CLERK and RECORDER

Kathleen S. Beckett

Kathleen S. Beckett