

MAP OF SURVEY

LOCATION: S. 1/2 of NE 1/4 of Sec. 5,
T. 36 S., R. 4 W., W.M.,
Jackson County, Oregon

DATE: March 8, 1994

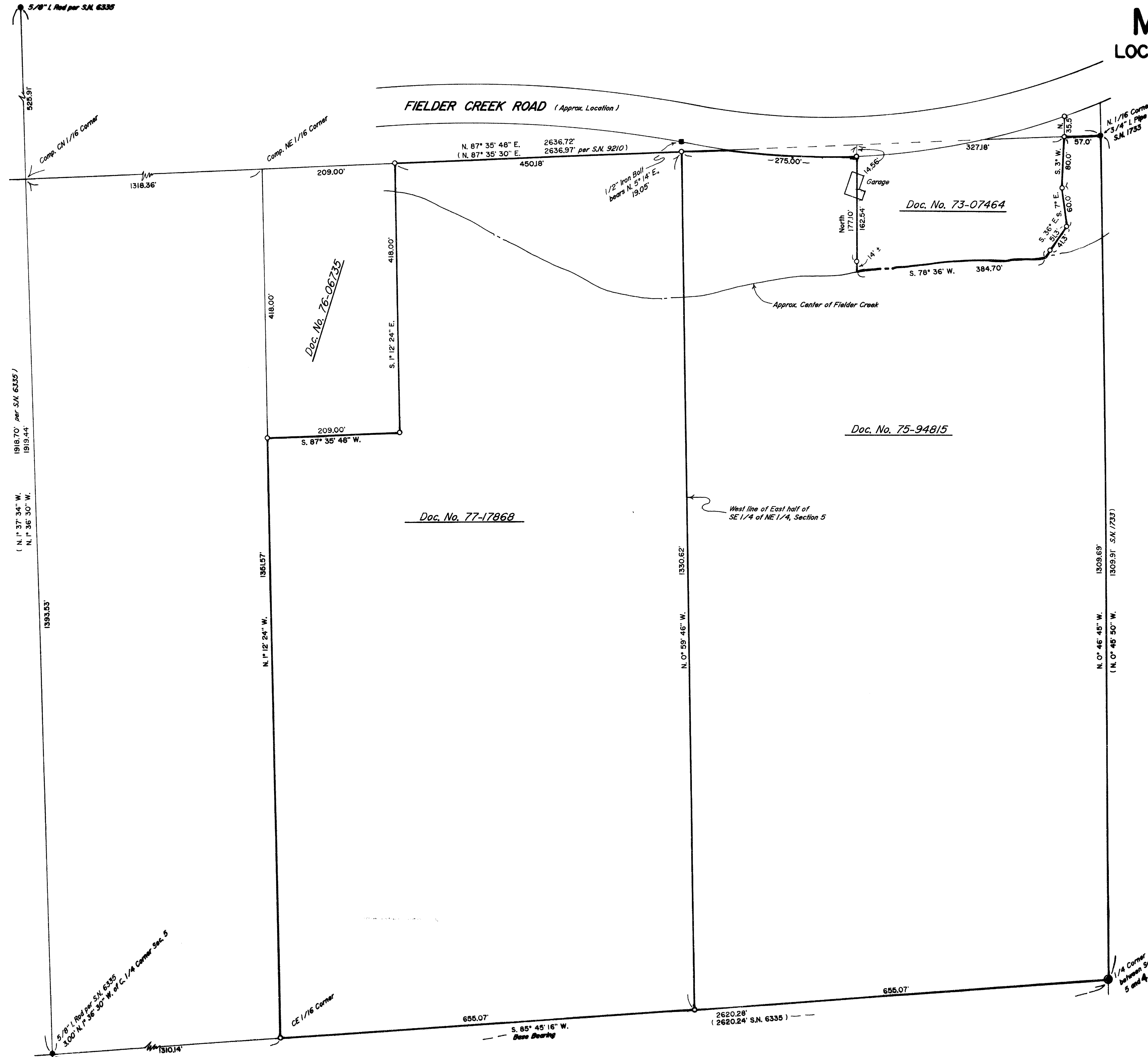
SURVEYED FOR:

L.D. and Renee Peterson
P.O. Box 1191
Rogue River, Oregon 97537

August K. and Leita M. Voehl
475 Fielder Creek Road
Rogue River, Oregon 97537

SURVEYED BY:

Edwards Surveying and Land Planning, Inc.
816 West 8th Street
Medford, Oregon 97501
Phone: (503) 776-2313



REGISTERED
PROFESSIONAL
LAND SURVEYOR

Darrel W. Edwards

OREGON
JULY 5, 1988
DARREL W. EDWARDS
741
Expires 12/31/95

LEGEND

- Fd. 1/2" I. Bolt, origin unknown.
- Fd. survey markers as noted.
- ⊙ Fd. Jackson County Surveyor's Br. Cap.
- Set 5/8" x 24" steel pin w/plastic cap stamped "D.W. EDWARDS-LS 741".

S.N. = Survey Number
SCALE: 1" = 100'
BASIS OF BEARINGS: S.N. 6335

** RECEIVED **

Date 4-28-94 By [Signature]

This survey consists of 1 sheet of map.

JACKSON COUNTY SURVEYOR

Edwards Surveying & Land Planning Inc.

816 West 8th Street
Medford, OR 97501
Tel.: (503) 776-2313
FAX: (503) 776-9978



223 SW "I" Street
Grants Pass, OR 97526
Tel.: (503) 471-7059
FAX: (503) 471-7809

SURVEYING • ENGINEERING • PLANNING

SURVEY NARRATIVE TO COMPLY WITH CHAPTER 209, PARAGRAPH 205,
OREGON REVISED STATUTES

13993

SURVEY FOR: L. D. & Renee Peterson
P.O. Box 1191
Rogue River, OR 97537

August K. & Leta M. Voehl
475 Fielder Creek Road
Rogue River, OR 97537

LOCATION: South 1/2 of Northeast 1/4 of Section 5, Town-
ship 36 South, Range 4 West of the Willamette
Meridian, Jackson County, Oregon.

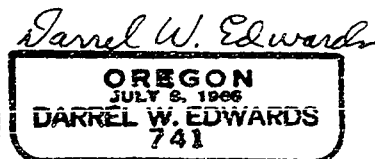
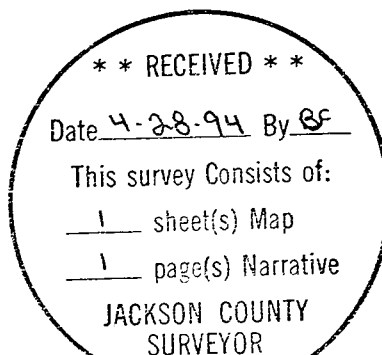
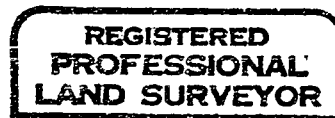
PURPOSE: To survey and mark the outside boundaries of
two parcels of land described in Documents No.
77-17868 and No. 75-94815, Deed Records for
Jackson County, Oregon.

PROCEDURE: Began at 3/4" iron pipe marking the North 1/16
corner on East line of Section 5 and ran a
closed loop traverse through the East 1/4 corner
of Section 5, witness to the Center 1/4 corner
of Section 5, and iron rod set in Survey No.
6335 as shown on the accompanying Map of Survey.
Also ran a closed loop traverse around both
parcels described in the above mentioned Doc-
uments. Posted and painted all lines of subject
properties and set final survey markers as shown
and described on the accompanying Map of Survey.

EQUIPMENT: Nikon NTD-4 Semi-automatic Theodolite/E.D.M.

BASIS OF BEARINGS: Survey No. 6335

DATE COMPLETED: March 8, 1994



Expires 12/31/95

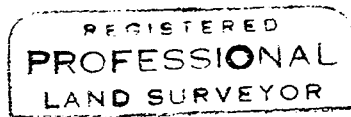
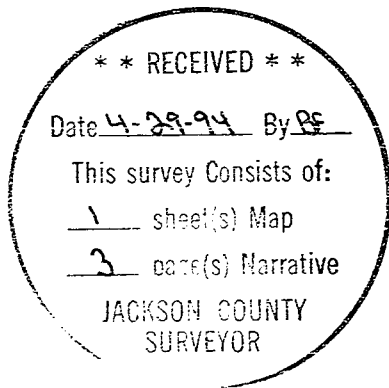
AT THE CENTER NORTH ONE-SIXTEENTH CORNER SECTION 7,
TOWNSHIP 41 SOUTH, RANGE 2 EAST, I SET A 5/8 BY 30 INCH
IRON PIN WITH A 2 INCH DIAMETER ALUMINIUM CAP EXPOSED 22
INCHES, I PLACE MOUND OF STONE AROUND MONUMENT FROM TOP
TO BOTTOM CAP MARKED:

T41S R2E
S 7
CN + 1/16
LS 1086

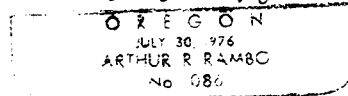
FROM WHICH:

A 6 1/2 INCH DIAMETER OAK BEARS N22°35'27"W, 131.6 FEET
MARKED LS1086 CN1/16S7 IN UPPER FACE, BT IN LOWER FACE.

A 6 1/2 INCH DIAMETER OAK BEARS N72°32'39"E, 203.0 FEET
MARKED LS1086 CN1/6S7 IN UPPER FACE, BT IN LOWER FACE.



Arthur A. Rambo



REGISTRATION EXPIRES DECEMBER 31, 1994

TAX LOT 412E07-901

AT THE EAST ONE-SIXTEENTH CORNER COMMON TO SECTION 6
AND SECTION 7 TOWNSHIP 41 SOUTH RANGE 2 EAST, I SET A
5/8 BY 30 INCH IRON PIN WITH A 2 INCH DIAMETER ALUMINUM
CAP EXPOSED 6 INCHES MARKED:

T41S R2E
S 6
E +1/16
S 7
LS 1086

FROM WHICH:

AN 8 INCH DIAMETER OAK BEARS S3°01'35"W, 75.2 FEET
MARKED LS1086 E1/16S7 IN UPPER FACE, BT IN LOWER FACE.

A 7 INCH DIAMETER OAK BEARS N42°46'23"E, 53.1 FEET
MARKED LS1086 E1/16S6 IN THE UPPER FACE, BT IN THE
LOWER FACE.

AT THE CENTER EAST ONE-SIXTEENTH CORNER SECTION 7,
TOWNSHIP 41 SOUTH, RANGE 2 EAST, I SET A 5/8 BY 30 INCH
IRON PIN WITH A 2 INCH DIAMETER ALUMINUM CAP, EXPOSED 13
INCHES MARKED:

T41S R2E
S 7
CE + 1/16
LS 1086

FROM WHICH:

A 13 1/2 INCH DIAMETER OAK BEARS N39°31'24"E, 45.1 FEET
MARKED LS1086 CE1/16S7 IN THE UPPER FACE, BT IN THE
LOWER FACE.

A 7 1/2 INCH DIAMETER OAK BEARS S23°31'50"W, 26.6 FEET
MARKED LS1086 E1/16S7 IN THE UPPER FACE, BT IN THE
LOWER FACE.

AT THE CENTER ONE-QUARTER CORNER SECTION 7, TOWNSHIP 41
SOUTH, RANGE 2 EAST. I SET A 5/8 BY 30 INCH IRON PIN
WITH A 2 INCH DIAMETER ALUMINUM CAP EXPOSED 9 INCHES
MARKED:

T41S R2E
S 7
C + 1/4
LS 1086

FROM WHICH:

A 6 1/2 INCH DIAMETER OAK BEARS N81°14'23"E, 23.2 FEET
MARKED LS1086 C1/4S7 IN UPPER FACE, BT IN LOWER FACE.

A 5 INCH DIAMETER OAK BEARS S86°04'53"E, 47.8 FEET
MARKED LS1086 C1/4S7 IN UPPER FACE, BT IN LOWER FACE.

A 5 INCH DIAMETER OAK BEARS S73°55'52"W, 31.2 FEET
MARKED LS1086 C1/4S7 IN UPPER FACE, BT IN LOWER FACE.

A 5 INCH DIAMETER OAK BEARS N58°38'41"W, 45.7 FEET
MARKED LS1086 C1/4S7 IN UPPER FACE, BT IN LOWER FACE.