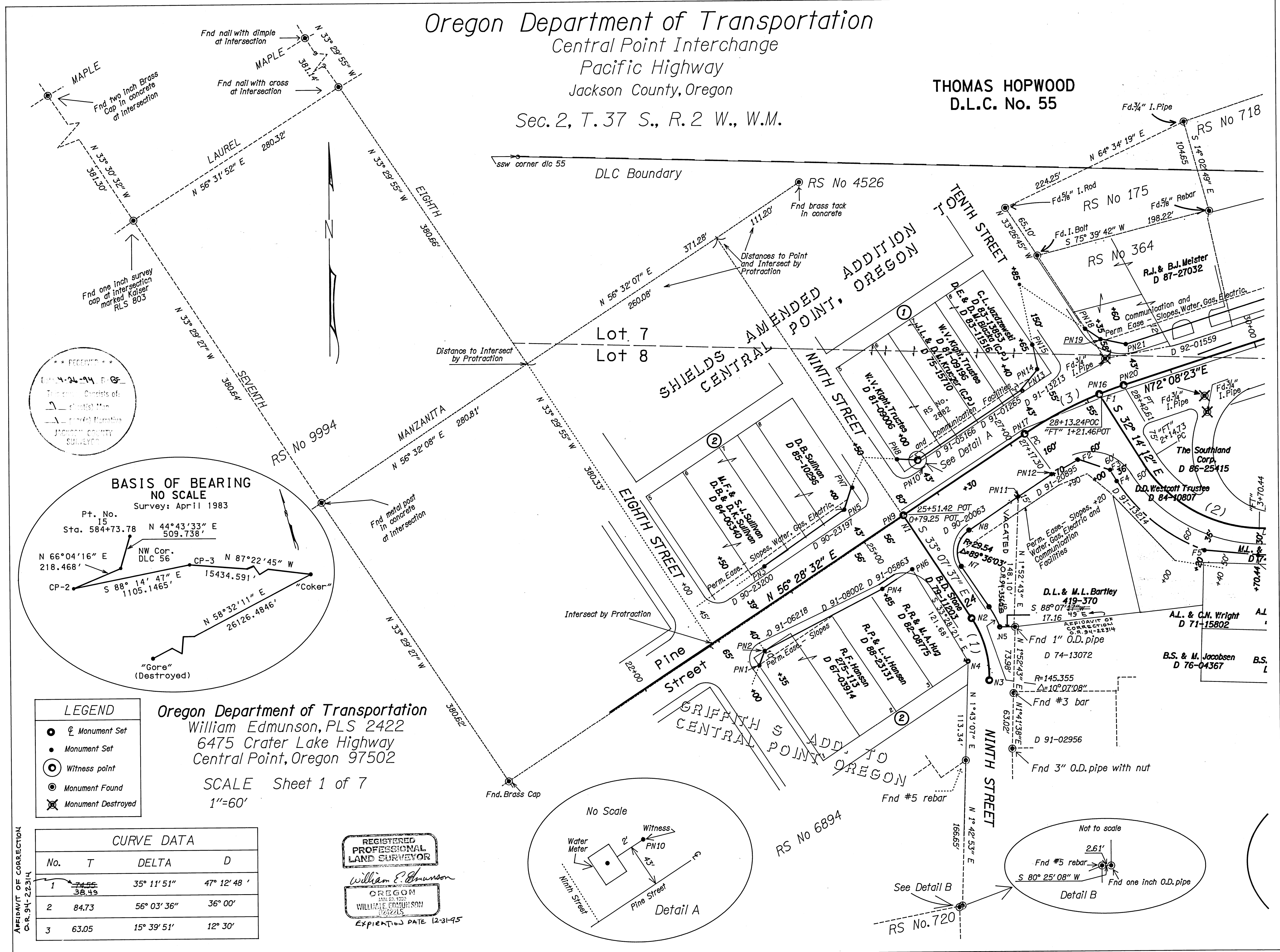
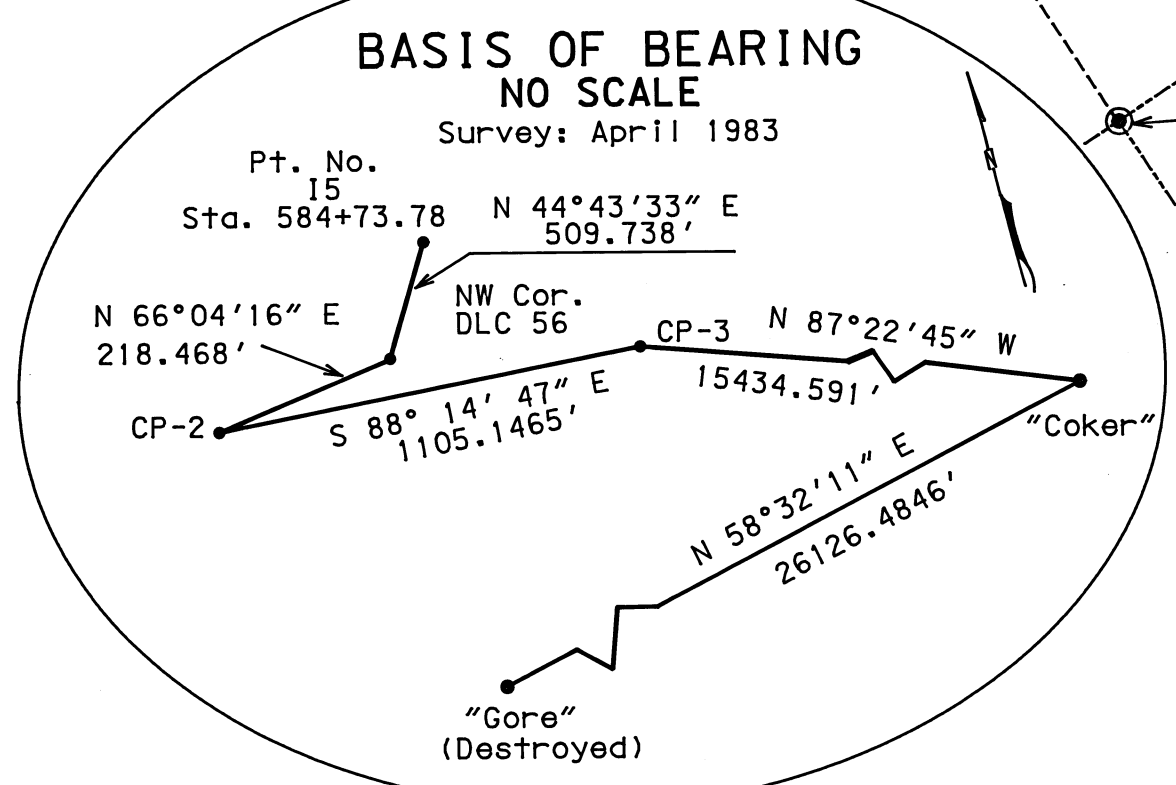


Oregon Department of Transportation  
 Central Point Interchange  
 Pacific Highway  
 Jackson County, Oregon  
 Sec. 2, T. 37 S., R. 2 W., W.M.

THOMAS HOPWOOD  
 D.L.C. No. 55



RECEIVED  
 12-24-94  
 Consists of:  
 1. Original Plan  
 2. Field Notes  
 JACOBSON COUNTY SURVEYOR



**LEGEND**

- Monument Set
- Monument Set
- Witness point
- ⊙ Monument Found
- ⊗ Monument Destroyed

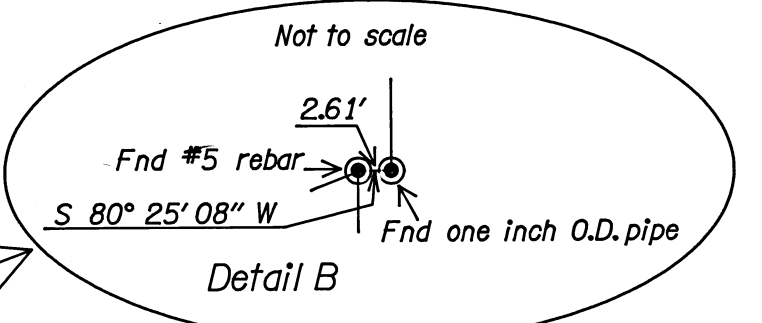
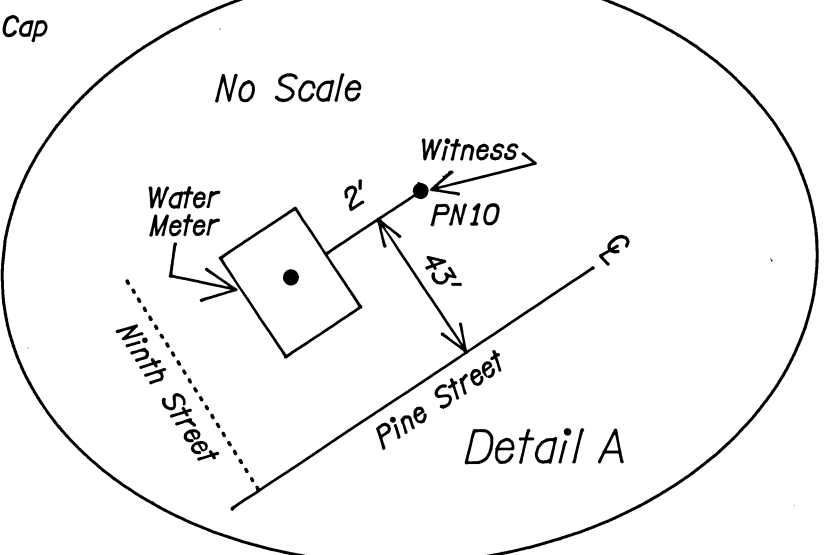
Oregon Department of Transportation  
 William Edmunson, PLS 2422  
 6475 Crater Lake Highway  
 Central Point, Oregon 97502

SCALE Sheet 1 of 7  
 1"=60'

**CURVE DATA**

No.	T	DELTA	D
1	24.25	35° 11' 51"	47° 12' 48'
2	84.73	56° 03' 36"	36° 00'
3	63.05	15° 39' 51"	12° 30'

REGISTERED PROFESSIONAL LAND SURVEYOR  
 William E. Edmunson  
 OREGON  
 WILLIAM EDMUNSON  
 12-31-95  
 EXPIRES DATE 12-31-95

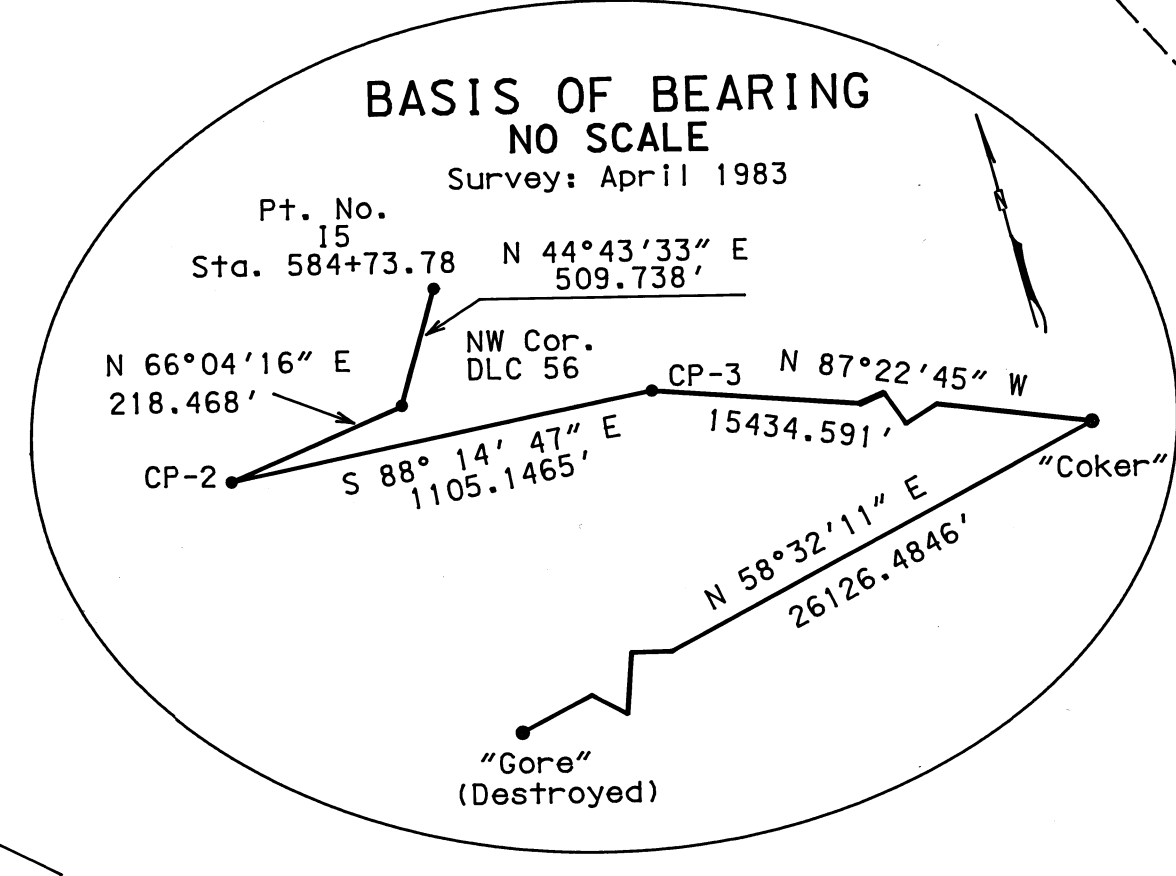
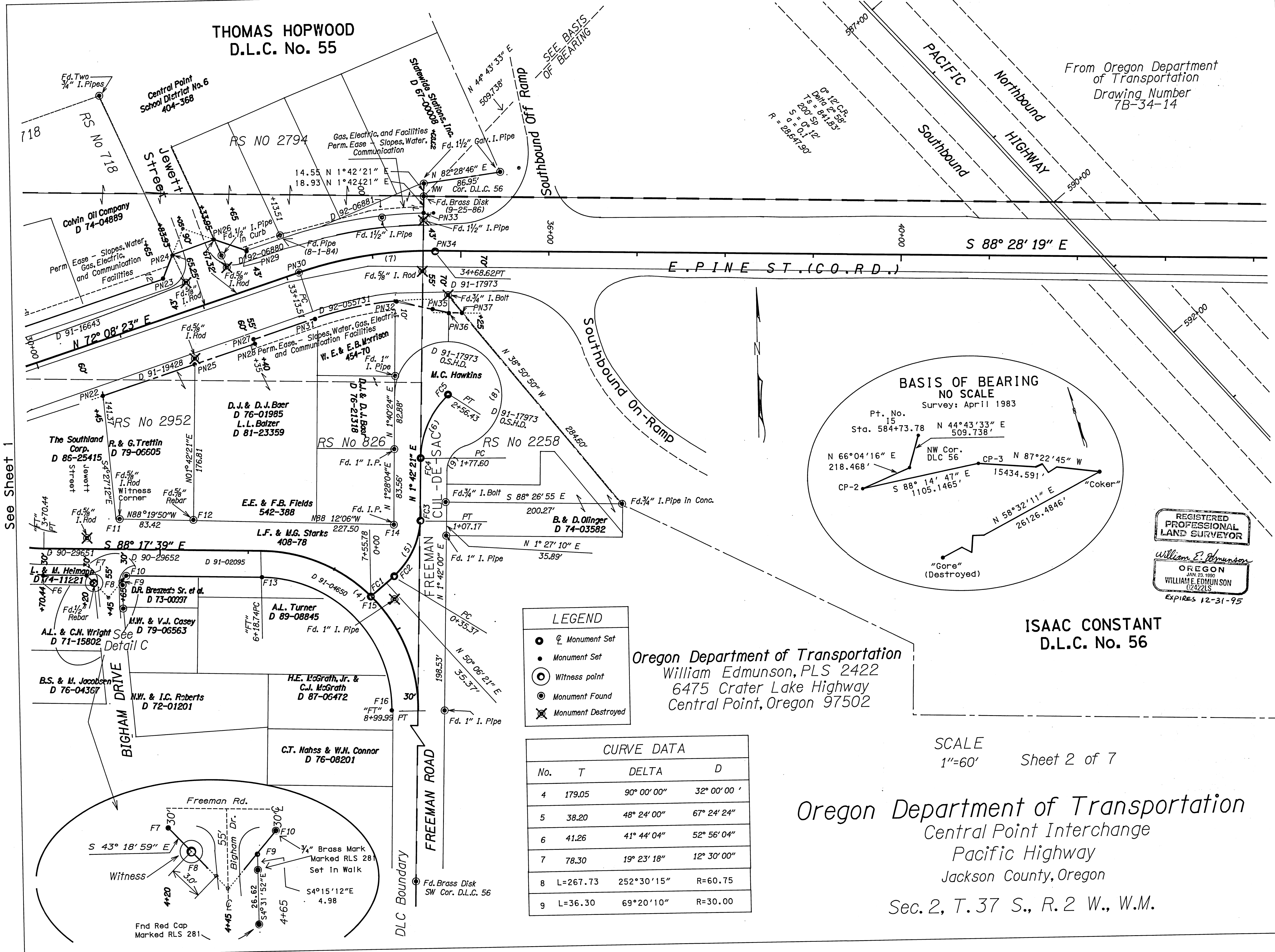


See Sheet 2

See Sheet 3

THOMAS HOPWOOD  
D.L.C. No. 55

From Oregon Department  
of Transportation  
Drawing Number  
7B-34-14



REGISTERED  
PROFESSIONAL  
LAND SURVEYOR

William E. Edmundson  
OREGON  
JAN 23 1990  
WILLIAM E. EDMUNSON  
17242215  
Expires 12-31-95

ISAAC CONSTANT  
D.L.C. No. 56

Oregon Department of Transportation  
William Edmundson, PLS 2422  
6475 Crater Lake Highway  
Central Point, Oregon 97502

LEGEND

- Monument Set
- Monument Set
- ⊙ Witness point
- ⊗ Monument Found
- ⊗ Monument Destroyed

CURVE DATA

No.	T	DELTA	D
4	179.05	90° 00' 00"	32° 00' 00"
5	38.20	48° 24' 00"	67° 24' 24"
6	41.26	41° 44' 04"	52° 56' 04"
7	78.30	19° 23' 18"	12° 30' 00"
8	L=267.73	252° 30' 15"	R=60.75
9	L=36.30	69° 20' 10"	R=30.00

SCALE  
1"=60' Sheet 2 of 7

Oregon Department of Transportation  
Central Point Interchange  
Pacific Highway  
Jackson County, Oregon  
Sec. 2, T. 37 S., R. 2 W., W.M.

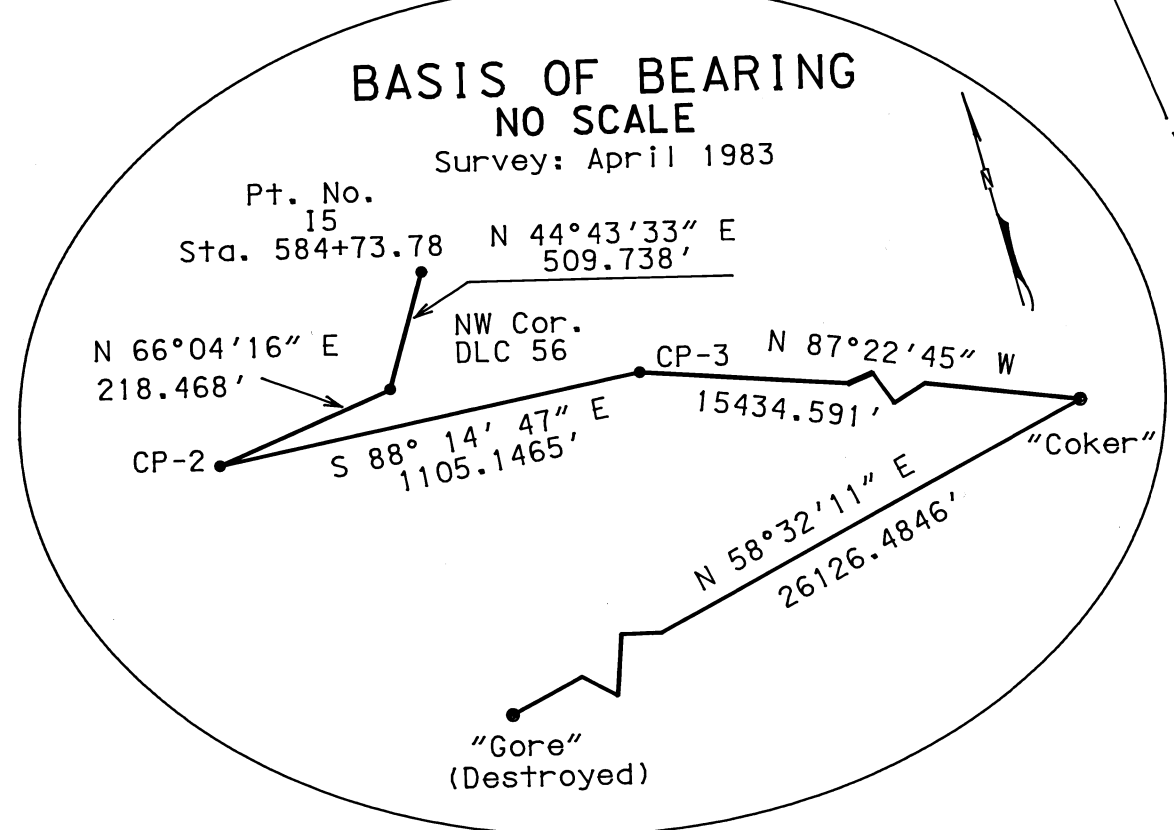
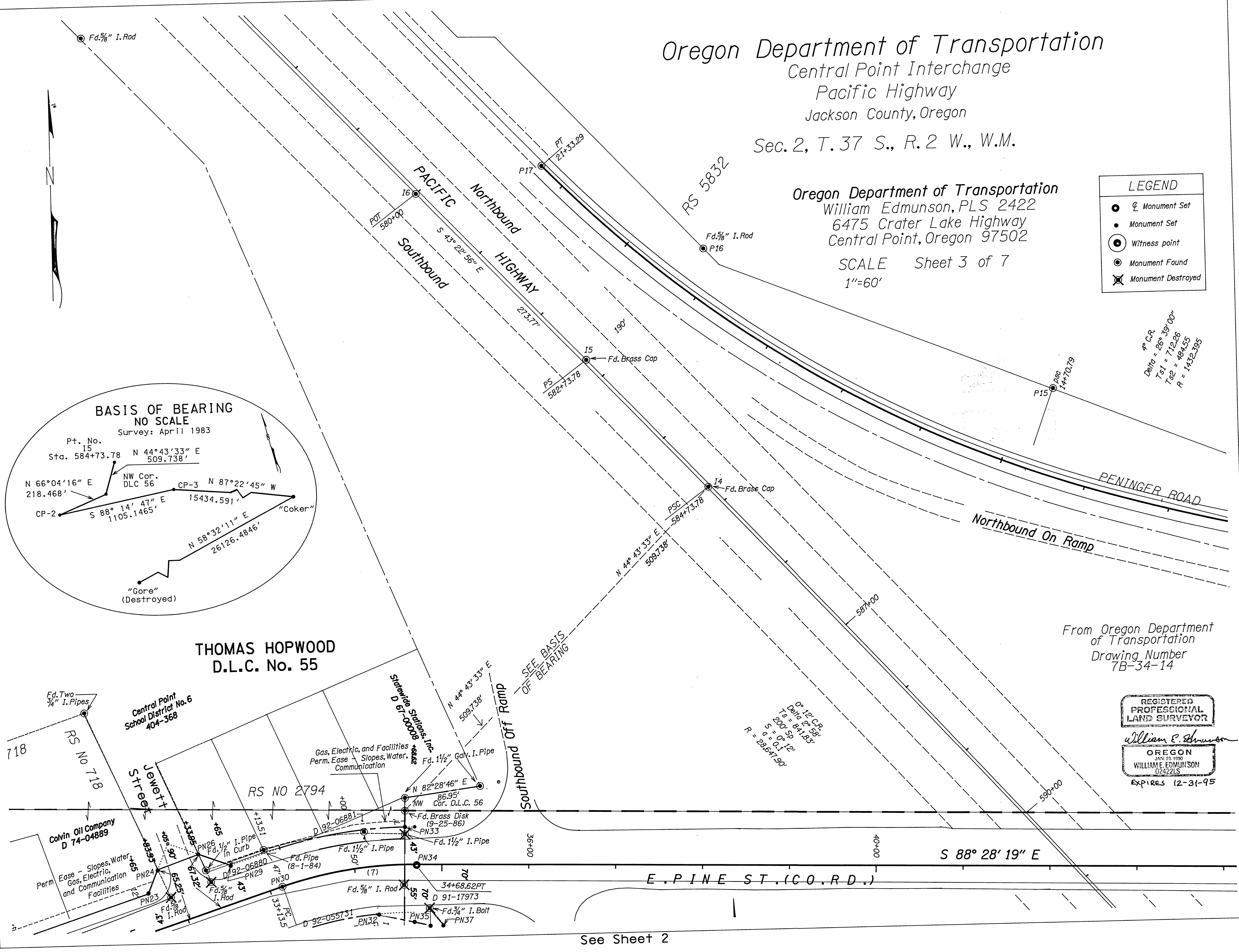
See Sheet 1

See Sheet 5

Oregon Department of Transportation  
 Central Point Interchange  
 Pacific Highway  
 Jackson County, Oregon  
 Sec. 2, T. 37 S., R. 2 W., W.M.

Oregon Department of Transportation  
 William Edmunson, PLS 2422  
 6475 Crater Lake Highway  
 Central Point, Oregon 97502  
 SCALE Sheet 3 of 7  
 1"=60'

LEGEND	
●	Monument Set
○	Monument Found
⊗	Monument Destroyed
○	Witness point



THOMAS HOPWOOD  
 D.L.C. No. 55

From Oregon Department  
 of Transportation  
 Drawing Number  
 7B-34-14

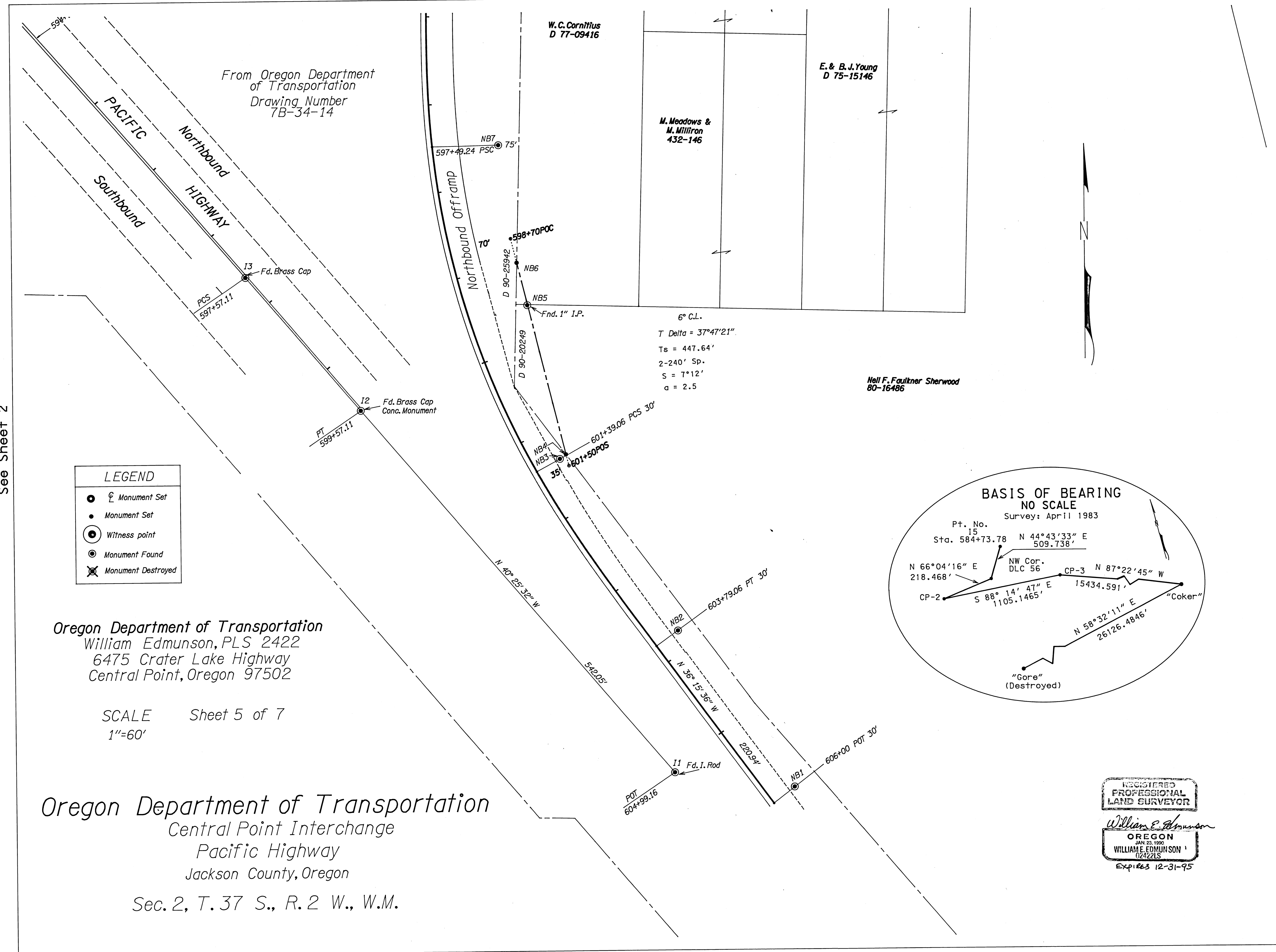
REGISTERED  
 PROFESSIONAL  
 LAND SURVEYOR  
 William E. Edmunson  
 OREGON  
 JAN 23 1990  
 WILLIAM E. EDMUNSON  
 0742215  
 EXPIRES 12-31-95

See Sheet 4

See Sheet 2



See Sheet 4



See Sheet 2

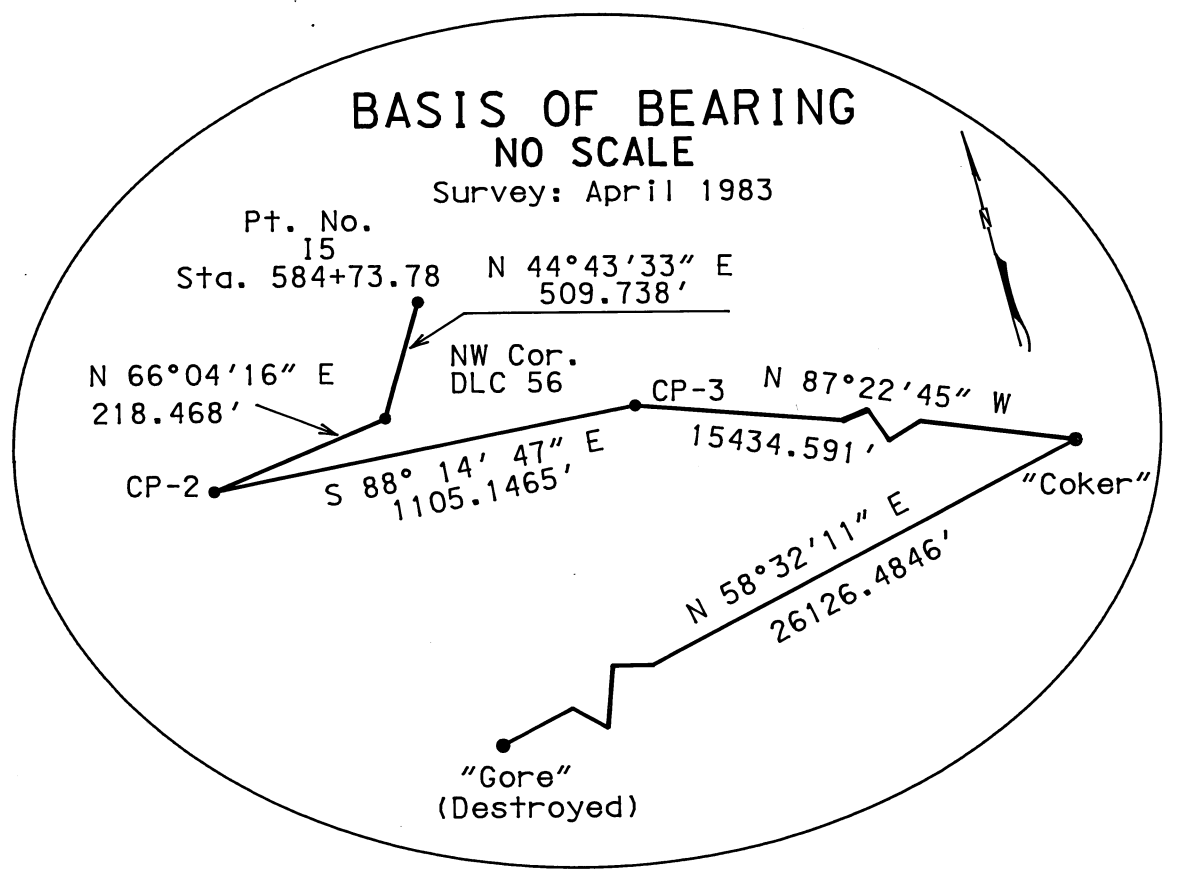
**LEGEND**

- ⊕ Monument Set
- Monument Set
- ⊙ Witness point
- ⊗ Monument Found
- ⊗ Monument Destroyed

Oregon Department of Transportation  
 William Edmunson, PLS 2422  
 6475 Crater Lake Highway  
 Central Point, Oregon 97502

SCALE Sheet 5 of 7  
 1"=60'

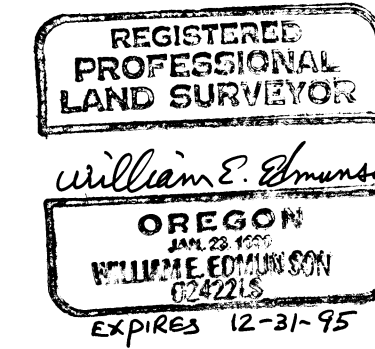
Oregon Department of Transportation  
 Central Point Interchange  
 Pacific Highway  
 Jackson County, Oregon  
 Sec. 2, T. 37 S., R. 2 W., W.M.



REGISTERED PROFESSIONAL LAND SURVEYOR  
 William E. Edmunson  
 OREGON  
 JAN 23 1990  
 WILLIAM E. EDMUNSON  
 042215  
 Expires 12-31-95

Oregon Department of Transportation  
 Central Point Interchange  
 Pacific Highway  
 Jackson County, Oregon

Sec. 2, T. 37 S., R. 2 W., W.M.



Oregon Department of Transportation  
 William Edmunson, PLS 2422  
 6475 Crater Lake Highway  
 Central Point, Oregon 97502

NOTE: 1.) COORDINATES USED ON THIS MAP ARE ON A LOCAL DATUM PLANE WHICH REPRESENTS TRUE GROUND DISTANCES. TO CONVERT LDP COORDINATES TO THE OREGON COORDINATE SYSTEM OF 1927, GRID SOUTH ZONE, MULTIPLY LDP COORDINATES BY 0.9999330.  
 $\theta = -1^{\circ}38'43.65''$

2.) \* Indicates Witness Coordinates

Sheet 6 of 7

PENINGER ROAD					
POINT	STATION	OFFSET	NORTHING	EASTING	DESCRIPTION
P1	0+00	0.00'	268859.419	1352016.673	Brass Disk In Cono. =54+35.73 Pine
P2	0+63.20	134.44' RT	268919.7986	1352152.371	Set Rebar & Cap
P3	0+64.65	75.55' LT	268925.635	1351942.490	Set Rebar & Cap
P4	0+80	70.00' RT	268937.941	1352088.387	Set Rebar & Cap
P5	0+95.63	45.00' LT	268955.9671	1351973.678	Set Rebar & Cap
P6	1+15	50.00' RT	268979.404	1352067.646	Set Rebar & Cap
P7	2+20.86	50.00' RT	269103.3405	1352010.290	Set Rebar & Cap
P8	2+20.86	45.00' LT	269037.456	1351941.793	Set Rebar & Cap
P9	4+20.86	45.00' LT	269098.2256	1351784.239	Set Rebar & Cap
P10	4+20.86	50.00' RT	* 269186.8275	* 1351800.041	Set Rebar & Cap 5' Witness @ 45' RT
P11	6+61.63	45.00' LT	269150.5018	1351547.208	Set Rebar & Cap
P12	6+72	36.00' LT	269150.3945	1351538.4270	FND. 1" I.P. =593=70 x715' Lt 1-5
P13	9+70.79	50.00' RT	269288.310	1351259.533	Set Rebar & Cap
P14	10+95.53	50.00' RT	269310.542	1351137.438	Set Rebar & Cap
P15	14+70.79	96.56' RT	269445.8628	1350798.3310	Set Rebar & Cap
P16	19+24.50	45.00' RT	269616.59	1350400.24	FND. 3/4" I. Rod
P17	21+33.29	0+00'	269716.3229	1350216.747	

FREEMAN ROAD					
POINT	STATION	OFFSET	NORTHING	EASTING	DESCRIPTION
F1	1+21.46	0.00'	268740.183	1349421.748	3" Brass Disk In Cono. =28+13.24POC Pine
F2	1+70	60.00' RT	268667.120	1349396.880	Set Rebar & Cap
F3	2+00	36.00' RT	268654.546	1349433.180	Set Rebar & Cap
F4	2+14.73	36.00' RT	268642.087	1349441.040	Set Rebar & Cap
F5	3+20	36.00' RT	268562.644	1349539.79	Set Rebar & Cap
F6	3+70.44	30.00' RT	268557.114	1349600.470	Set Rebar & Cap
F7	4+20	30.00' RT	268555.639	1349650.010	Set Rebar & Cap
Witness Pt.	4+28.46	38.45' RT	*268546.936	*1349658.216	3' WITNESS to point * F8
F8	4+30.57	40.57' RT	268544.7533	1349660.274	
F9	4+60.77	40.48' RT	268549.158	1349690.624	Set Rebar & Cap
F10	4+65	30.00' RT	268554.299	1349694.990	Set Rebar & Cap
F11	SW COR. D79-06605		268618.5088	1349688.741	FND. 3/4" Rebar Witness - RS 2952
F12	SW COR D81-23359		268616.0195	1349772.176	FND. 3/4" Rebar, DOWN 0.5'
F13	6+18.74	30.00' RT	268549.722	1349848.660	Set Rebar & cap
F14	SE COR D76-21318		268609.345	1349999.539	FND. 3/4" Rebar
F15	7+55.78POC	0.00'	268526.116	1349972.069	3" Brass Disk=0+00 (FC-1)
F16	8+99.99	30.00' RT	268396.311	1349993.220	Set Rebar & Cap

PINE STREET					
POINT	STATION	OFFSET	NORTHING	EASTING	DESCRIPTION
PN1	23+20.62	50.29' RT	268434.9039	1349033.885	Set Rebar & Cap
PN2	23+35	40.00' RT	268451.437	1349040.210	Set Rebar & Cap
PN3	23+85.5	40.00' LT	268547.1263	1349039.798	Set Rebar & Cap
PN4	24+85	56.00' RT	268520.942	1349174.090	Set Rebar & Cap
PN5	25+00	43.00' LT	268611.759	1349131.925	Set Rebar & Cap
PN6	25+21.42	56.00' RT	268540.5343	1349203.669	Set Rebar & Cap
PN7	25+21.42	58.66' LT	268635.8172	1349140.669	Set Rebar & Cap
PN8	25+81.42	56.74' LT	268668.2429	1349191.160	Set Rebar & Cap
PN9	25+51.42POT	0.00'	268604.308	1349198.536	3" Brass Disk =0+79.25 9th St.
PN10	26+02	43.00' LT	* 268666.988	* 1349215.290	Witness - 2' to 26+00
PN11	26+71.79	55.00' RT	268624.9396	1349329.262	Set Rebar & Cap
PN12	27+17.30	55.00' RT	268650.0742	1349367.201	Set Rebar & Cap
PN13	27+40	43.00' LT	268744.9674	1349334.107	Set Rebar & Cap
PN14	27+65	55.00' LT	268768.5497	1349351.745	Set Rebar & Cap
PN15	27+71.03	82.34' LT	268796.4085	1349346.115	Set Rebar & Cap
PN16	28+13.24POC	0.00'	268740.183	1349421.743	3" Brass Disk =1+21.46 Freeman
PN17	27+17.30 PC	0.00'	268695.925	1349336.825	3" Brass Disk
PN18	28+24.16	74.98' LT	268614.4585	1349406.100	Set Rebar & Cap
PN19	28+35	58.00' Lt	268802.5912	1349423.469	Set Rebar & Cap
PN20	28+42.61 PT	0.00'	268750.084	1349449.398	3" Brass Disk In Cono.
PN21	28+60	43.00' LT	268796.3454	1349452.762	Set Rebar & Cap
PN22	30+59.50	60.00' RT	268759.498	1349674.242	Set Rebar & Cap
PN23	31+65	43.00' LT	268889.8879	1349743.063	Set Rebar & Cap
PN24	31+83.90	65.29' LT	268916.872	1349754.264	Set Rebar & Cap
PN25	NW Cor. Tax Lot 400		268792.751	1349777.439	Set Rebar & Cap - NW Cor. Tax Lot 400
PN26	32+33.99	67.29' LT	268934.168	1349801.283	Set Rebar & Cap
PN27	32+40	55.00' RT	268819.616	1349844.510	Set Rebar & Cap
PN28	32+40	60.00' RT	268814.857	1349846.043	Set Rebar & Cap
PN29	32+65	43.00' LT	268920.5576	1349838.244	Set Rebar & Cap
PN30	33+13.51PC	0.00'	268894.5106	1349897.608	3" Brass Disk In Cono
PN31	33+13.51PC	55.00' RT	268842.161	1349914.476	Set Rebar & Cap
PN32	34+20.94	55.00' RT	268860.3938	1350007.016	Set Rebar & Cap
PN33	34+58.07	43.00' LT	268959.597	1350040.016	Set Rebar & Cap
PN34	34+68.62PT	0.00'	268916.438	1350050.411	3" Brass Disk In Cono.
PN35	34+88.62	66.13' RT	268850.3369	1350048.644	Set rebar & Cap
PN36	34+86.77	70.00' RT	268845.9777	1350066.688	Set rebar & Cap
PN37	35+01.70	70.00' RT	268845.58	1350081.61	Set rebar & Cap
PN38	49+00.03 3 Pt.	0.00'	268876.263	1351481.308	Set rebar & Cap
PN39	54+35.73 3Pt.	0.00'	268859.419	1352016.673	Set 3" Brass Disk =0+00 Peninger
PN40	56+93.74 3 Pt.	0.00'	268854.125	1352274.631	Set 3" Brass Disk In cono.

Oregon Department of Transportation  
 Central Point Interchange  
 Pacific Highway  
 Jackson County, Oregon

Sec. 2, T. 37 S., R. 2 W., W.M.

Oregon Department of Transportation  
 William Edmunson, PLS 2422  
 6475 Crater Lake Highway  
 Central Point, Oregon 97502

Sheet 7 of 7

NOTE: 1.) COORDINATES USED ON THIS MAP ARE ON A LOCAL DATUM PLANE WHICH REPRESENTS TRUE GROUND DISTANCES. TO CONVERT LDP COORDINATES TO THE OREGON COORDINATE SYSTEM OF 1927, GRID SOUTH ZONE, MULTIPLY LDP COORDINATES BY 0.9999330 .  
 $\theta = -1^{\circ}38'43.65''$

2.) \* Indicates Witness Coordinates

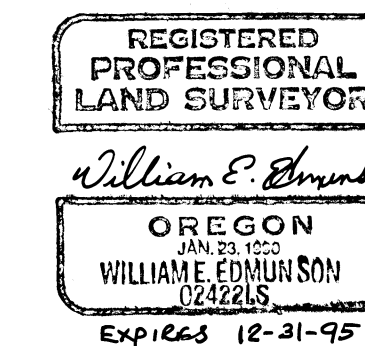
FREEMAN CUL de SAC					
POINT	STATION	OFFSET	NORTHING	EASTING	DESCRIPTION
FC1	0+00	0.00'	268526.116	1349972.069	30"-5/8" Rebar In Cono. 3" Brass Disk
FC2	0+35.37	0.00'	268548.8009	1349999.206	30"-5/8" Rebar In Cono. 3" Brass Disk
FC3	1+07.17	0.00'	268611.484	1350029.651	30"-5/8" Rebar In Cono. 3" Brass Disk
FC4	1+77.60	0.00'	268681.8832	1350031.747	30"-5/8" Rebar In Cono. 3" Brass Disk
FC5	2+56.43	0.00'	268752.8432	1350061.335	30"-5/8" Rebar In Cono. 3" Brass Disk

NINTH STREET					
POINT	STATION	OFFSET	NORTHING	EASTING	DESCRIPTION
N1	0+79.25	0.00'	268604.3081	1349198.536	3/4" Rebar w/3" Brass Disk = 25+51.42 Pine
N2	2+19.34 PC	0.00'	268486.985	1349275.097	3/4" Rebar w/3" Brass Disk
N3	2+93.89 PT	0.00'	268416.281	1349294.743	3/4" Rebar w/3" Brass Disk
N4	S.W. Cor. Lot 5 Griffith Add.		268439.0375	1349270.778	Set Rebar & Cap (#9th st.)
N5	2+40.77 POC	24' LT	268477.479	1349307.259	Set Rebar & Cap
N6	2+19.34 PC	24' LT	268500.100	1349295.888	Set Rebar & Cap
N7	1+63.41 PT	24' LT	268546.939	1349264.633	Set Rebar & Cap
N8		55' RT	268587.703	1349273.056	Set Rebar & Cap 26+04.37 PC Pine

I-5 NORTHBOUND OFFRAMP					
POINT	STATION	OFFSET	NORTHING	EASTING	DESCRIPTION
NB1	606+00.00POT	30.00' LT	267802.8545	1351873.6022	Set Rebar & Cap
NB2	603+79.06PT	30.00' LT	267981.0110	1351742.9246	Set Rebar & Cap
NB3	601+39.06PCS	30.00' LT	268177.1289	1351611.2341	Set Rebar & Cap
NB4	601+43.30	36.79' LT	268176.7333	1351619.265	Set Rebar & cap
NB5	599+55.10	67.72' LT	268351.8052	1351576.139	FND. 1" I.P., flush. "LS 2349"
NB6	599+09.34	69.83' LT	268393.0503	1351566.013	Set Rebar & Cap
NB7	597+49.24PSC	75.00' LT	268533.4978	1351540.9161	Set Rebar & Cap
NB8	595+09.24PT	75.00' LT	268769.7019	1351544.4148	Set Rebar & Cap

I-5 CENTER LINE					
POINT	STATION	OFFSET	NORTHING	EASTING	DESCRIPTION
11	605+00.00POT	0.00	267821.03	1351737.37	Fnd. I. Rod
12	599+57.11PT	0.00	268233.67	1351385.87	Fnd. Brass Disk
13	597+57.11PCS	0.00	268385.75	1351256.03	Fnd. Brass Disk
14	584+73.78PSC	0.00	269340.68	1350399.29	Fnd. Brass Disk
15	582+73.78PS	0.00	269486.06	1350262.24	Fnd. Brass Disk
16	580+00.00POT	0.00	269685.034	1350074.196	Fnd. I. Rod

DLC CORNERS			
STATION	NORTHING	EASTING	DESCRIPTION
NW CORNER DLC 56	268978.521	1350040.580	Fnd. Brass Disk
NNE CORNER DLC 56	268919.410	1352166.336	Fnd. 1 1/2" Iron Pipe



OREGON STATE HIGHWAY DIVISION  
6475 CRATER LAKE HWY.  
CENTRAL POINT, OR 97502  
(503) 826-1881

SURVEY NO. **13985**

PROJECT NO. C11062

SURVEY DATE: FEBRUARY, 1994

**SURVEY NARRATIVE TO COMPLY WITH O.R.S. PARAGRAPH 209.250  
OREGON REVISED STATUTES**

**LOCATED IN:**

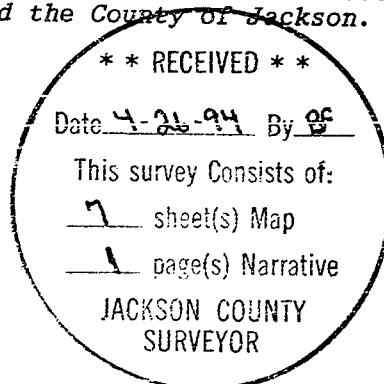
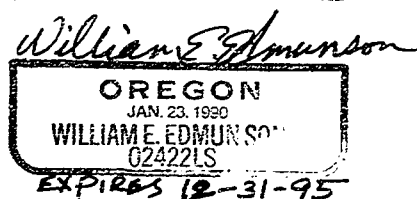
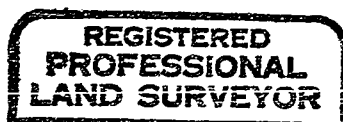
SW 1/4 and SE 1/4 of Section 2, T37S, R2W, W.M. partially in donation land claim 56 (Issac Constant) Jackson County, Oregon.

**PURPOSE:**

The purpose of this survey is to establish new right-of-way and centerline positions for the Oregon Department of Transportation's Central Point Interchange project. The information was provided by Oregon Department of Transportation Drawing Number 1A-13-26 (Central Point Interchange Section) and numerous deeds and surveys listed on the survey map. The project consisted of widening and realigning of Pine, Ninth and Tenth Streets in Central Point and, Head, Penninger and Freeman Roads in Jackson County. The widening of the Interstate 5 overpass at Pine Street was also part of the project. Portions of Ninth Street, Bigham Drive, Freeman Road and Penninger have been abandoned. Freeman Road has been connected at the intersection of Tenth and Pine Streets. A new street, Freeman Court, ends in a cul-de-sac in a portion of the old Freeman Road alignment.

**SURVEY PROCEDURE:**

Strip descriptions have been used to convey the right-of-way changes, excepting the area in vicinity of the abandoned portion of Ninth Street south of Pine Street. The northwest corner of Tax Lot 400, between Bigham Drive and Freeman Road was re-established to a position fitting the new right-of-way. The centerline control or the portions in the Central Point street system were set at centerline and the centerline portions of the Jackson County Road system were set in reference, excepting Head Road, which was set at centerline. The settings were per request of the City of Central Point and the County of Jackson.





94-19303

1:43  
5 00  
serv 6 00

OREGON STATE HIGHWAY DIVISION  
6475 CRATER LAKE HWY.  
CENTRAL POINT, OR 97502  
(503) 826-1881

13985

SURVEY NO. 13985  
PROJECT NO. C11062  
SURVEY DATE: FEBRUARY, 1994

AFFIDAVIT OF CORRECTION TO COMPLY WITH O.R.S. PARAGRAPH 209.255 (1) (d)  
OREGON REVISED STATUTES

LOCATED IN:

SW 1/4 and SE 1/4 of Section 2, T37S, R2W, W.M.

PURPOSE:

The purpose of this document is to change a typographical error in sheet 4 of the filed survey number 13985.

Correct the station on Penninger Road 'P' line station, STA 2+70.86 to STA 2+20.86 to correspond with point table number P8 coordinates on sheet 6.

Jackson County, Oregon  
Recorded  
OFFICIAL RECORDS

2:43 MAY 20 1994 P.M.

KATHLEEN S. BECKETT  
CLERK and RECORDER

*Geraldine Cutting* Deput.

APPROVED COUNTY SURVEYOR

*Verlyn Thomas* 5/20/94

REGISTERED  
PROFESSIONAL  
LAND SURVEYOR

*William E. Munson*

OREGON  
JAN. 23, 1900  
WILLIAM E. EDMUNSON  
02422LS

EXPIRES 12-31-95

94-22314

10:01 5-  
Surv 6-

OREGON STATE HIGHWAY DIVISION  
6475 CRATER LAKE HWY.  
CENTRAL POINT, OR 97502  
(503) 826-1881

13985

SURVEY NO. 13985  
PROJECT NO. C11062  
SURVEY DATE: FEBRUARY, 1994

AFFIDAVIT OF CORRECTION TO COMPLY WITH O.R.S. PARAGRAPH 209.255 (1) (d)  
OREGON REVISED STATUTES

LOCATED IN:

SW 1/4 and SE 1/4 of Section 2, T37S, R2W, W.M.

PURPOSE:

The purpose of this document is to make two corrections on sheet 1 of 7 in the filed survey number 13985 and change one typographical error on sheet 7 of 7.

Sheet 1 of 7

- A.) In the curve data table, change the T value for curve No. 1 from 74.55' to 38.49'.
- B.) Change the bearing given between N5 and the found 1" O.D. iron pipe from S 88° 07' 17" W to S 88° 07' 49" E.

Sheet 7 of 7

- A.) Change the given easting of N6 from 1349295.960 to 1349295.196.

See attached calculatins for further explanation.

COUNTY SURVEYOR  
Verlyn Thomas

Approved Verlyn Thomas Date 6/14/94

State of Oregon, County of Jackson--SS.

The within instrument received and filed at 10:01 o'clock  
A m. the 14 day of June 19 94

Recorded in official Records for Jackson County  
Oregon, Kathleen S. Beckett County Clerk.

By Surseldine Cutting Deputy

