

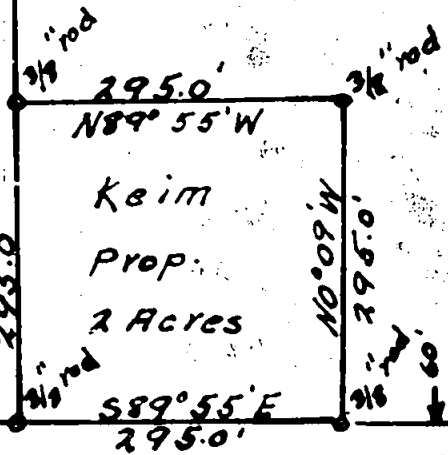
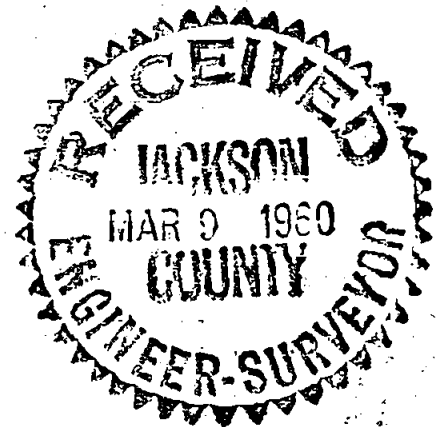
3' COP

1331.88 AcT.  
589° 56' 50" W

33 34 T 355, RIW  
4 3 T 365, RIW

1016.87'  
50° 08' 50" E

R. B. Keim, Property  
Sec. 4, T. 365, RIW W.M.  
Scale 1" = 200 ft.



REGISTERED  
OREGON  
LAND SURVEYOR

*Ralph J. Ellis*  
OCTOBER 4, 1957  
RALPH J. ELLIS  
416

Linn Road

Survey Narrative to Comply with Paragraph 209.250,  
Oregon Revised Statutes

For:

Mr. R.B. Keim

Purpose:

To locate the boundaries of two square acres in the S.W. corner of a larger Area.

Procedure:

I was given a map of the larger area made by Mr. Clabby in 1948. I was shown the S.W. corner of the large area, which was also the S.W. corner of the two acres which was also on the North Right of way of the Linn road. I was shown a 3" cap on a pipe which marked the N.W. corner of the large area, this established the west line of the lot. At the S.W. corner I measured along the west line 295.0 feet to set the N.W. corner of the lot, then I turned the required angle which gave me the bearing of the south line and also the Right of way line of the Linn road and measured 295.0 feet to set the S.E. corner. Then I turned the angle to make the east line parallel with the west line and chained 295.0 feet to set the N.E. corner, then turned the angle to make the North line parallel with the south line and chained 295.0 feet to the N.W. corner for a closure.

