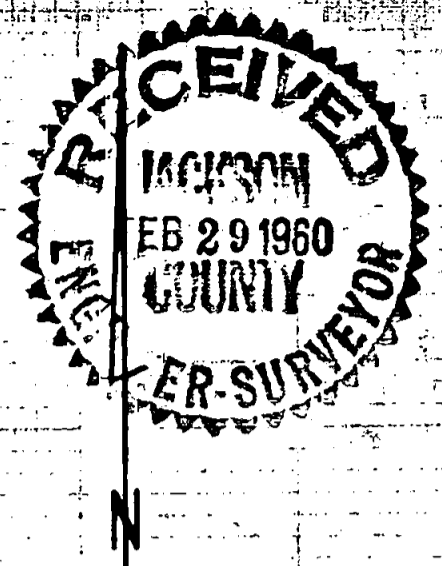


Survey For  
 ELK LUMBER CO.  
 and  
 HARVEY MORGAN  
 Located in Secs. 17, 18, 19, 20, 29 and 30,  
 T. 32 S., R. 2 E., W.M.  
 By: Mark E. Boyden  
 Feb. 1960

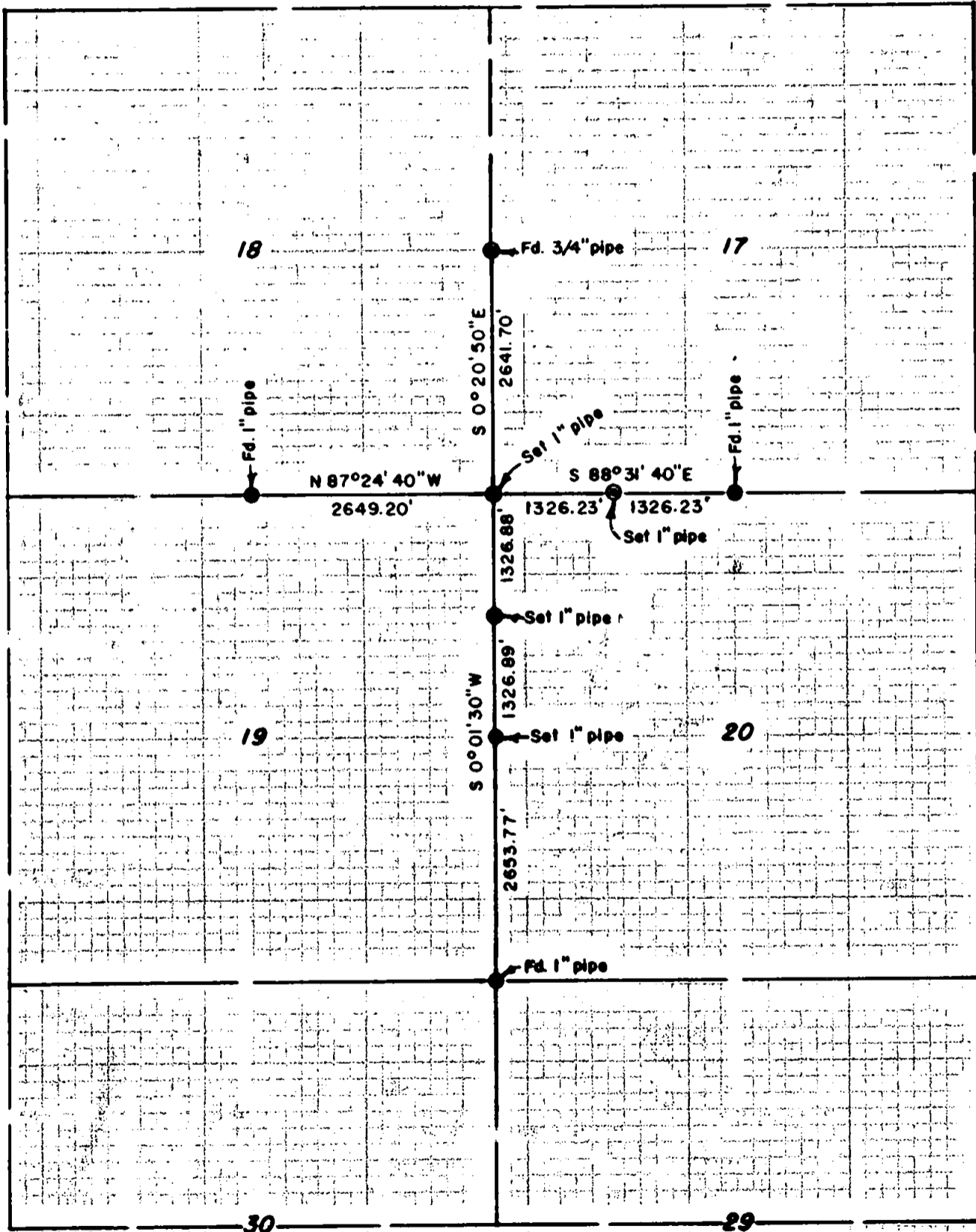
REGISTERED  
 OREGON  
 LAND SURVEYOR

*Mark E. Boyden*  
 NOVEMBER 9, 1951  
 MARK E. BOYDEN  
 281



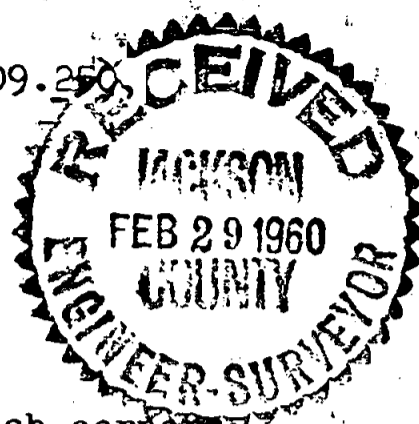
SCALE: 3" = 1 MILE

© Established or re-established  
 Govt. corner



Survey Narrative to Comply with Paragraph 209.250

Oregon Revised Statutes



FOR: Elk Lumber Co.  
&  
Harvey Morgan

PURPOSE: To monument, establish and re-establish corners in Township 32 South, Range 2 East shown on the attached map.

PROCEDURE:

Ran transit-chain traverse lines from the 1/4 corner common to Sections 17 and 18, Southerly to the corner common to Sections 19, 20, 29 and 30. Also traversed from the 1/4 corner common to Sections 18 and 19 Easterly to the 1/4 corner common to Sections 17 and 20, all being in Township 32 South, Range 2 East, Willamette Meridian.

A double proportionate location for the Section corner common to Sections 17, 18, 19 and 20 was then calculated and found to differ from local information and topography in the immediate vicinity of this obliterated corner.

A further record search was then made and it was found that the old survey of the Elk Creek Road had tied in this corner when its position was definite.

Further ties were then made to P.I. points on said Road survey so that the old corner location could be calculated from the road records.

It was found that this position for the corner not only agreed with the local topography, but fit the position of the original fir witness tree (now a stump sawed off even with the ground surface).

After establishing the Section corner in the above described manner, the position of the remaining corners was calculated. Iron pipes and new references were set for these corners so established and duly recorded in the appropriate Volumes in the County Surveyor's office.

February 1960

