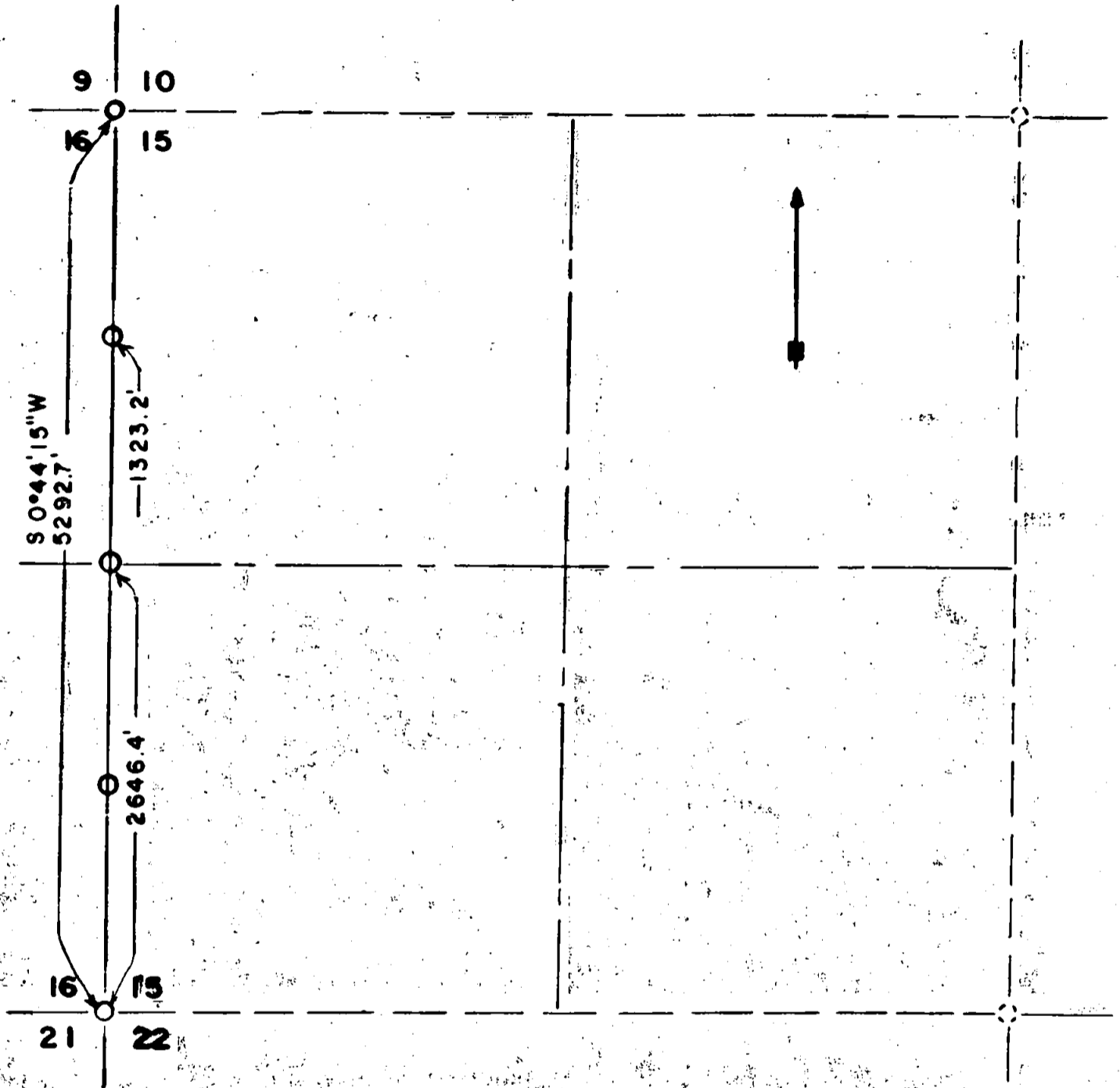


Section Plat

S15, T35S, R2E, W.M.

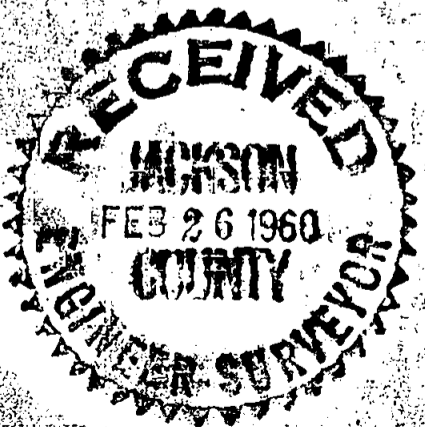


— Lines run by transit & chain
 ○ Pipe set 1 1/4" X 4"
 Scale 1" = 1000'

REGISTERED
OREGON
 LAND SURVEYOR

Duane A. Smeltzer

OCTOBER 24, 1958
 DUANE A. SMELTZER
 461



(3)

Sun Observation: Field Notes. S15, T35S, R2E, W.M.

Date: 2-11-60

Elevation: 2540 feet.

Temperature: 35°F.

Latitude: N42°32.1'.

Longitude: 122°34.9'W.

Time: #1 9:30 AM PST. - 17:40.3 GCT.

#2 9:46 " " 17:57.0 "

#3 9:55 " " 18:05.3 "

Suns apparent declination:

#1 S14°24.7'-14.3':S14°10.4'

#2 " -14.6':S14°10.1'

#3 " -14.7':S14°10.0'

Measured altitude of Sun, less corrections:

#1 20°38.8'-2.25' : 20°36.5'

#2 22°50.2'- " : 22°48.0'

#3 23°46.4'- " : 23°44.2'

Course: A to B.

A : a point on Random Line 299.8 feet S1°12'30"W of NW. corner of Section 15, T35S, R2E, W.M.

B : a point on Random Line 598.3 feet S1°12'30"W of NW. corner of Section 15, T35S, R2E, W.M.

Bearing of True West section line by mean of three observations:

S1°12'30"W. - Random Line

0°28'15"E - Calculated correction.

S0°44'15"W - True section line.

Magnetic declination: 18°44'15"E.



Field Notes; Transit and chain survey. Began 12/21/59.

Commenced transit and chain survey to reestablish the section line and 1/4 corner between sections 15 and 16, T35S, R2E, W.M. on 12-21-59.

Began random line south from corner common to sections 15, 16, 9, 10, T35S, R2E, W.M. Corner was an apparent stake in a mound of stone which does not agree with the original B.T.'s. Found were the following BT's; Magnetic declination- 20°E; (four B.Oaks called for)

- 36" D.Fir bears S7°W 35.9 feet; dead, scribes visible.
- 40" " " S28°E 14.6 " ; face, not opened.
- 28" " " N69°E 50.3 " ; scribes visible.
- 40" " " N57°W 85 " ; face, burned stump.

Set 1 1/2"x4' pipe and scribed following two BT's:
 9461 14" W.Fir bears N7°W 52.3 feet. RS 461
 16g15 18" D.Fir " S80 1/2°W 14.8 feet. BT

Random line ran on S 1°12'30"W Began slight ascent through timbered relatively flat ground.

- 1320.9 feet set approximate 1/16 corner.
- 1720.0 feet old cabin four feet West of line.
- 2639.1 feet set approximate 1/4 corner.

Began ascent of ridge.

- 3300 feet top of ridge.
- 3650 feet E-W draw.
- 3959.9 feet set approximate 1/16 corner.
- 4050 feet top of ridge.
- 4200 feet E-W draw.
- 4600 feet top of ridge.
- 4820 feet E-W draw.
- 5292.7 feet intersect south section line 43.5 feet West of section corner.

True bearing of section line calculated 0°28'15" to East.

True bearing S 0° 44' 15" W

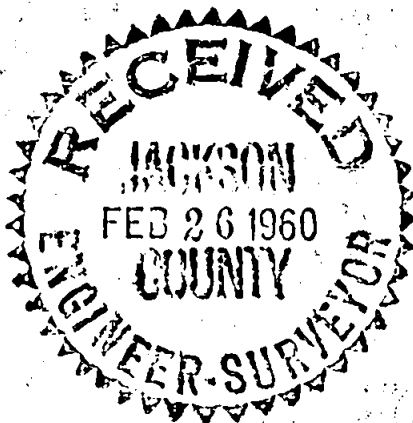
On True Section Line;

1323.2 feet set 1/16 corner. 1 1/2"x4' pipe. Scribed two new BT's.
 RS 461 20" W.Fir bears N50°E 20.0 feet. RS 461
 11" W.Fir " N20°W 51.3 " BT
 2646.4 feet set 1/4 corner. 1 1/2"x4' pipe. Scribed two new BT's;
 16g15 7" D.Fir bears N87°W 30.4 feet. RS 461
 5" Yew Wood bears S18 1/2°E 40.5 feet. BT
 3969.6 feet set 1/16 corner. 1 1/2"x4' pipe. Scribed two BT's;
 RS 461 20" D.Fir N60°W 5.4 feet. RS 461
 8" W.Fir Due East 36.2 feet. BT

5292.7 feet Section Corner. Found stake and mound of stone, following original evidence:

- 18" Fir N57°E 22 lks; dead, down
- 24" " S75°E 65 " ; stump hole
- 30" " S45°W 50 " ; stump, face
- 20" " N85°W 15 " ; dead, down

Set 1 1/2"x4' pipe, scribed four new BT's; RS 461
 16 15 6" Chinquapin bears N37°W 18.3 feet BT
 RS 461 12" D.Fir " N63 1/2°E 32.2 feet
 21 22 12" W.Fir " S41 1/2°E 44.1 feet
 6" " " S14°W 31.6 feet



Butte Falls, Oregon
January 22, 1960

County Surveyor
Jackson County Court House
Medford, Oregon

Dear Sir;

Please record the following information pertaining to the surveys of the United States Public Lands.

I, Duane A. Smeltzer on or about 12-17-59 diligently tried to retrace the section line between sections 15 and 16, T35S, R2E, WM. Both sections have been logged at least once and parts have been logged three and four times. Old blazes were few and far between. The 1/4 corner and all evidence was destroyed. The section corner common to sections 9, 10, 15, 16, was an apparent post in a mound of stone with four BT's which do not fit the original field notes. Instead of the four B. Oaks called for there are the following; magnetic declination 20°E;

36"	D. Fir	bears	S7°W	35.9	feet:	dead, scribes visible
40"	"	"	S28°E	14.6	feet;	face not opened
40"	"	"	N57°W	85.0	feet;	face, burned stmp
28"	"	"	N69°E	50.3	feet;	scribes visible

Set a 1½" x 4' pipe at above corner and scribed the following two new BT's;

14"	W. Fir	bears	N7°W	52.3	feet
18"	D. Fir	"	S80½°W	14.8	feet

The original field note description of the section line between sections 15 and 16 is erroneous. The area is timbered with draws instead of the called for level prairie.

A true line by transit and chain was then run between the corner common to sections 9, 10, 15, and 16 and the corner common to sections 15, 16, 21 and 22, T35S, R2E. A copy of the field notes are attached.

