

N1/2 S24 T35S R4W W.M.



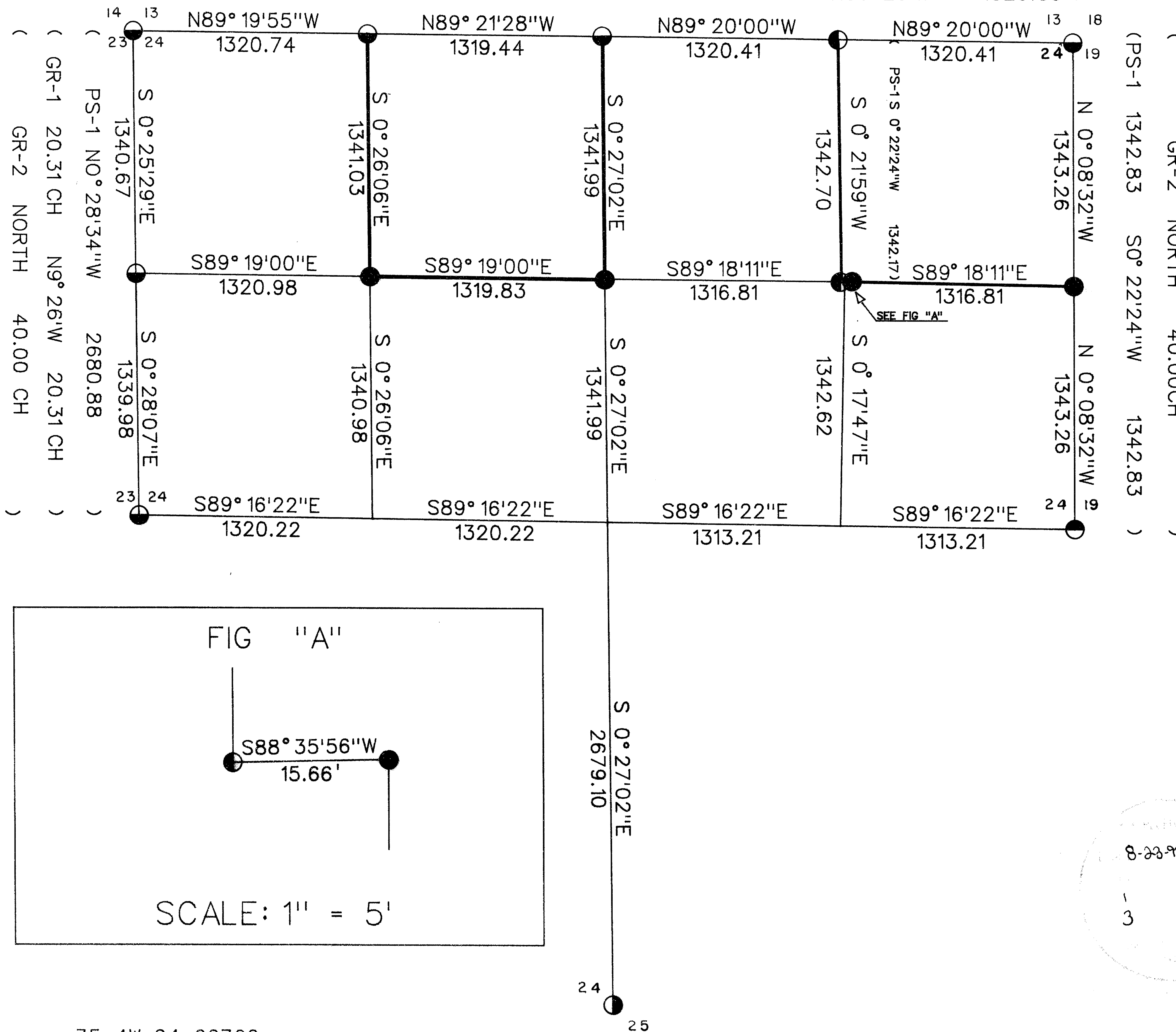
SURVEY FOR

MEDFORD CORPORATION
 PO BOX 550
 MEDFORD, OREGON
 97501

SURVEY BY

ARTHUR R. RAMBO
 735 VISTA PARK DRIVE
 EAGLE POINT, OREGON
 97524

(GR-2 N89° 45'W 79.36 CH)
 (GR-1 20.00 CH 20.00 CH N89° 20'W 40.00 CH)
 (PS-1 S89° 20'00"E 5282.62)
 (PS-2 1320.89 N89° 20'W 1320.89)



CERTIFICATE OF SURVEY

I, ARTHUR R. RAMBO, REGISTRATION No.1086 REGISTERED PROFESSIONAL LAND SURVEYOR STATE OF OREGON, HEREBY CERTIFY THAT THIS MAP CORRECTLY REPRESENTS A SURVEY MADE BY ME OR UNDER MY DIRECTION IN CONFORMANCE WITH THE LAWS OF THE STATE OF OREGON.

LEGEND

- SET⁵/₈" BY 30" REBAR WITH 2" ALUM. CAP
- ◐ FOUND STANDARD SIZED B.L.M. BRASS CAP
- ◑ FOUND STANDARD SIZED B.L.M. ALUM. CAP
- ◒ FOUND STANDARD COUNTY BRASS CAP
- ◓ FOUND PLASTIC CAP MARKED DW EDWARDS LS741
- PS-1 SURVEY No. 10014
- PS-2 SURVEY No. 9493
- GR-1 JULY 6,1982 B.L.M. DEPENDENT RESURVEY
- GR-2 1857 GOVERNMENT RECORD
- LINE POSTED AND BLAZED THIS SURVEY

SCALE

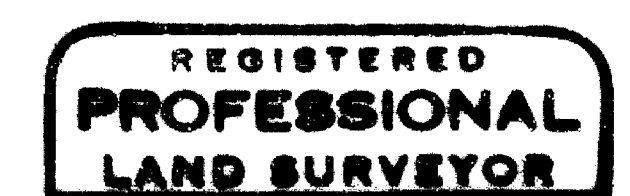
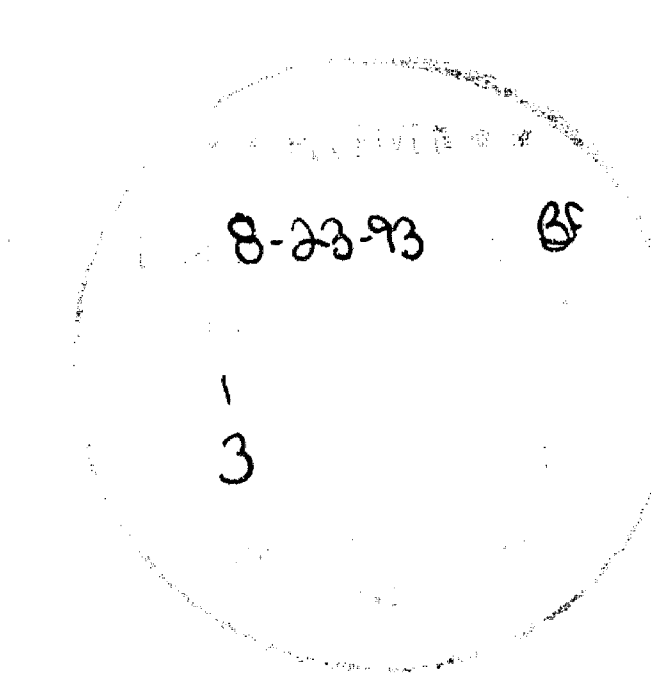
1" = 500'

BASIS OF BEARING

RECORDED SURVEY No. 10014
 EAST HALF NORTH LINE

DATE

JULY 15, 1993



Arthur R. Rambo
 OREGON
 JULY 20, 1991
 ARTHUR R. RAMBO
 No. 1086

REGISTRATION EXPIRES 31 DEC. 1994

TAX LOT No. 35-4W-24-00700

SECTION 1

3.00 INCH DIAMETER ALUMINUM BEARS NEARLY 180°W, 10.00 FEET MARKED
ON THE LEFT SIDE OF THE ROAD, BE IN THE LOWER PART.

4.00 INCH DIAMETER ALUMINUM BEARS NEARLY 180°W, 10.00 FEET MARKED
ON THE LEFT SIDE OF THE ROAD, BE IN THE LOWER PART.

SECTION ONE PLATHEEN DEANER SECTION 14 TOWNSHIP 35 SOUTH
RANGE 4 WEST OF THE CLATSOP COUNTY, OREGON. THIS PLATHEEN DEANER
SECTION ONE BEING 1/4 OF THE SECTION 14 TOWNSHIP 35 SOUTH
RANGE 4 WEST OF THE CLATSOP COUNTY, OREGON.

AS A
BY
DATE

SECTION 2

3.00 INCH DIAMETER ALUMINUM BEARS NEARLY 180°W, 10.00 FEET MARKED
ON THE LEFT SIDE OF THE ROAD, BE IN THE LOWER PART.

4.00 INCH DIAMETER ALUMINUM BEARS NEARLY 180°W, 10.00 FEET MARKED
ON THE LEFT SIDE OF THE ROAD, BE IN THE LOWER PART.

SECTION ONE PLATHEEN DEANER SECTION 14 TOWNSHIP 35 SOUTH
RANGE 4 WEST OF THE CLATSOP COUNTY, OREGON. THIS PLATHEEN DEANER
SECTION ONE BEING 1/4 OF THE SECTION 14 TOWNSHIP 35 SOUTH
RANGE 4 WEST OF THE CLATSOP COUNTY, OREGON.

AS A
BY
DATE

SECTION 3

3.00 INCH DIAMETER ALUMINUM BEARS NEARLY 180°W, 10.00 FEET MARKED
ON THE LEFT SIDE OF THE ROAD, BE IN THE LOWER PART.

4.00 INCH DIAMETER ALUMINUM BEARS NEARLY 180°W, 10.00 FEET MARKED
ON THE LEFT SIDE OF THE ROAD, BE IN THE LOWER PART.

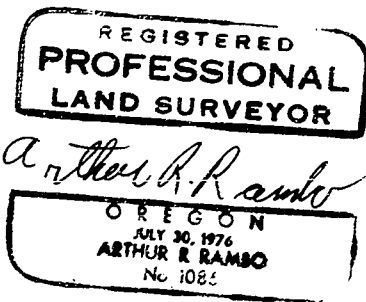
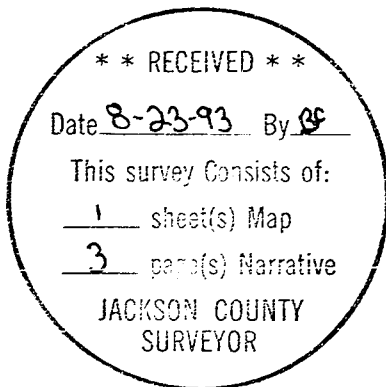
SECTION ONE PLATHEEN DEANER SECTION 14 TOWNSHIP 35 SOUTH
RANGE 4 WEST OF THE CLATSOP COUNTY, OREGON. THIS PLATHEEN DEANER
SECTION ONE BEING 1/4 OF THE SECTION 14 TOWNSHIP 35 SOUTH
RANGE 4 WEST OF THE CLATSOP COUNTY, OREGON.

AS A
BY
DATE

SECTION 4

3.00 INCH DIAMETER ALUMINUM BEARS NEARLY 180°W, 10.00 FEET MARKED
ON THE LEFT SIDE OF THE ROAD, BE IN THE LOWER PART.

4.00 INCH DIAMETER ALUMINUM BEARS NEARLY 180°W, 10.00 FEET MARKED
ON THE LEFT SIDE OF THE ROAD, BE IN THE LOWER PART.



SOUTH CORNER 4 WEST. AT THE CORNER LOCATION I FOUND A BUREAU OF LAND MANAGEMENT 3 1/4 INCH DIAMETER ALUMINUM CAP EXPOSED 6 INCHES AND 2 BEARING TREES.

SECTION CORNER COMMON TO SECTIONS 14, 15, 23, AND 24 TOWNSHIP 35 SOUTH RANGE 4 WEST. AT THE CORNER LOCATION I FOUND A BUREAU OF LAND MANAGEMENT 3 1/4 INCH DIAMETER CAP EXPOSED 6 INCHES AND 4 BEARING TREES.

WEST QUARTER CORNER COMMON TO SECTION 24 TOWNSHIP 35 SOUTH RANGE 4 WEST AND 1/4 SECTION 19 TOWNSHIP 35 SOUTH RANGE 2 WEST. AT THE CORNER LOCATION I FOUND A STANDARD BUREAU OF LAND MANAGEMENT BRASS CAP EXPOSED 6 INCHES AND 3 BEARING TREES.

EAST QUARTER CORNER COMMON TO SECTIONS 24 AND 25 TOWNSHIP 35 SOUTH RANGE 4 WEST. AT THE CORNER LOCATION I FOUND A 2 1/2 INCH DIAMETER BRONZE CAP EXPOSED 6 INCHES AND 3 BEARING TREES.

WEST QUARTER CORNER COMMON TO SECTIONS 13 AND 24 TOWNSHIP 35 SOUTH RANGE 4 WEST. AT THE CORNER LOCATION I FOUND A BUREAU OF LAND MANAGEMENT 3 1/4 INCH DIAMETER ALUMINUM CAP EXPOSED 6 INCHES AND 2 BEARING TREES.

EAST QUARTER CORNER COMMON TO SECTIONS 24 AND 19 TOWNSHIP 35 SOUTH RANGE 4 WEST. AT THE CORNER LOCATION I FOUND A 3 1/4 INCH BRONZE CAP EXPOSED 3 1/2 INCHES AND 3 BEARING TREES.

EAST QUARTER CORNER COMMON TO SECTIONS 24 AND 24 TOWNSHIP 35 SOUTH RANGE 4 WEST. AT THE CORNER LOCATION I FOUND A 3 1/4 INCH DIAMETER ALUMINUM CAP EXPOSED 6 INCHES AND 3 BEARING TREES.

SOUTH QUARTER CORNER COMMON TO SECTIONS 23 AND 24 TOWNSHIP 35 SOUTH RANGE 4 WEST. AT THE CORNER LOCATION I FOUND A 3 1/4 INCH DIAMETER ALUMINUM CAP EXPOSED 6 INCHES AND 2 BEARING TREES.

WEST QUARTER CORNER COMMON TO SECTIONS 24 AND 24 TOWNSHIP 35 SOUTH RANGE 4 WEST. AT THE CORNER LOCATION I FOUND A 3 1/4 INCH DIAMETER ALUMINUM CAP EXPOSED 6 INCHES AND 2 BEARING TREES.

D.W. HOWARD
10/24/80

FIELD NOTES

ALL MARKERS FOUND BY ME WERE EXPOSED 12 INCHES APPROXIMATELY ABOVE THE GROUND SURFACE.

WEST QUARTER CORNER COMMON TO SECTIONS 24 AND 15 TOWNSHIP 35 SOUTH RANGE 4 WEST. AT THE CORNER LOCATION I FOUND A YELLOW BRASS CAP ON MARKER EXPOSED 1 1/2 INCHES MARKED:

D.W. HOWARD
10/24/80

NOTE: THIS CORNER IS ORIENTED SOUTH.

REMARKS AND COMMENTS

ALL BEARING TREES ARE TO THE CENTER OF TREE AT THE MARKER UNLESS OTHERWISE NOTED.

WEST QUARTER CORNER SECTION 24 TOWNSHIP 35 SOUTH RANGE 4 WEST. AT THE CORNER LOCATION I FOUND A 3 INCH DIAMETER ALUMINUM CAP ON A 2 1/2 INCH REBAR EXPOSED 9 INCHES MARKED:

D.W. HOWARD
10/24/80
10/24/80

LOCATION: NORTH ONE HALF OF SECTION 24 TOWNSHIP 33 SOUTH RANGE 3 WEST WILLAMETTE MERIDIAN, JACKSON COUNTY, OREGON.

SURVEY FOR: MLLC DPO CORPORATION
P.O. BOX 222
MEDFORD OREGON 97501

SURVEY BY: ARTHUR R. RAMEL
715 VISTA PARK DRIVE
EAGLE POINT, OREGON 97524

DATE: JULY 10, 1995

BASIS OF BEARING: SURVEY # 10014

PURPOSE: TO RECONSTRUCT CORNERS, AND MARK AND POST THE LINES OF MLLC DPO CORPORATION FOUNDATIONS AS SHOWN ON THE MAP TO ACCOMPANY THIS NARRATIVE.

PROCEDURE: A SEARCH OF RECORDS REVEALED THAT ALL ORIGINAL CORNERS OF SAID SECTION 24 NEEDED FOR CONTROL OF THIS SURVEY HAD BEEN PREVIOUSLY VISITED AND RECONSTRUCTED BY PROPORTIONATE MEASUREMENT. E.W. EDWARDS SET AN APPROXIMATE CORNER NEAR THE NORTH EAST 1/4 CORNER OF SURVEY # 10014. E.W. EDWARDS ALSO SET THE NORTH 1/4 CORNER COMMON TO SECTION 10 TOWNSHIP 33 SOUTH RANGE 3 WEST AND SECTION 24 TOWNSHIP 33 SOUTH RANGE 3 WEST FOR SURVEY # 10014. E.W. EDWARDS SET A 1/2 INCH IRON PIN FOR THE LOCATION OF EAST 1/4 CORNER COMMON TO SECTIONS 10 AND 24 OF SURVEY # 10014.

I THEN A RANLON LINE TRAVERSING DOUBLING ALL ANGLES AND DISTANCES, FINDING 10 CORNERS NEEDED FOR CONTROL OF THIS SURVEY. I THEN COMPUTED THE SUBDIVISION FOR THE NORTH ONE HALF OF SECTION 24. THE DOCUMENT FOR THE NORTH ONE HALF SECTION 24 TOWNSHIP 33 SOUTH RANGE 3 WEST AND SECTION 24 TOWNSHIP 33 SOUTH RANGE 3 WEST WAS FOUND. I CALCULATED PROPORTIONATE MEASUREMENT FOR THE SOUTH 1/4 CORNER OF SECTION 10 TOWNSHIP 33 SOUTH RANGE 3 WEST AND SECTION 24 TOWNSHIP 33 SOUTH RANGE 3 WEST AND SET A MEASUREMENT BY 1/2 INCH PROPORTIONATE LOCATION FOR THE NORTH 1/4 CORNER OF SECTION 10 TOWNSHIP 33 SOUTH RANGE 3 WEST AND SECTION 24 TOWNSHIP 33 SOUTH RANGE 3 WEST.

I SET CORNERS AND POSTED LINES AS SHOWN ON THE MAP TO ACCOMPANY THIS NARRATIVE.

ADDITIONAL INFORMATION

ALL MEASUREMENTS TO BEARING TREES ARE TO THE CENTER OF TRUNK AT THE BASE UNDER NORMAL STRESS.

SECTION CORNER COMMON TO SECTIONS 10 AND 24 TOWNSHIP 33 SOUTH RANGE 3 WEST, AND SECTIONS 10 AND 19 TOWNSHIP 33 SOUTH RANGE 3 WEST AT THE CORNER LOCATION I FOUND A STANDARD BUREAU OF LAND RECONSTRUCTION CORNER OF 6 INCHES 4 INCHES AND 4 BEARING TREES.

WEST ONE-SIXTEENTH CORNER COMMON TO SECTIONS 10 AND 24 TOWNSHIP 33