

MAP OF SURVEY

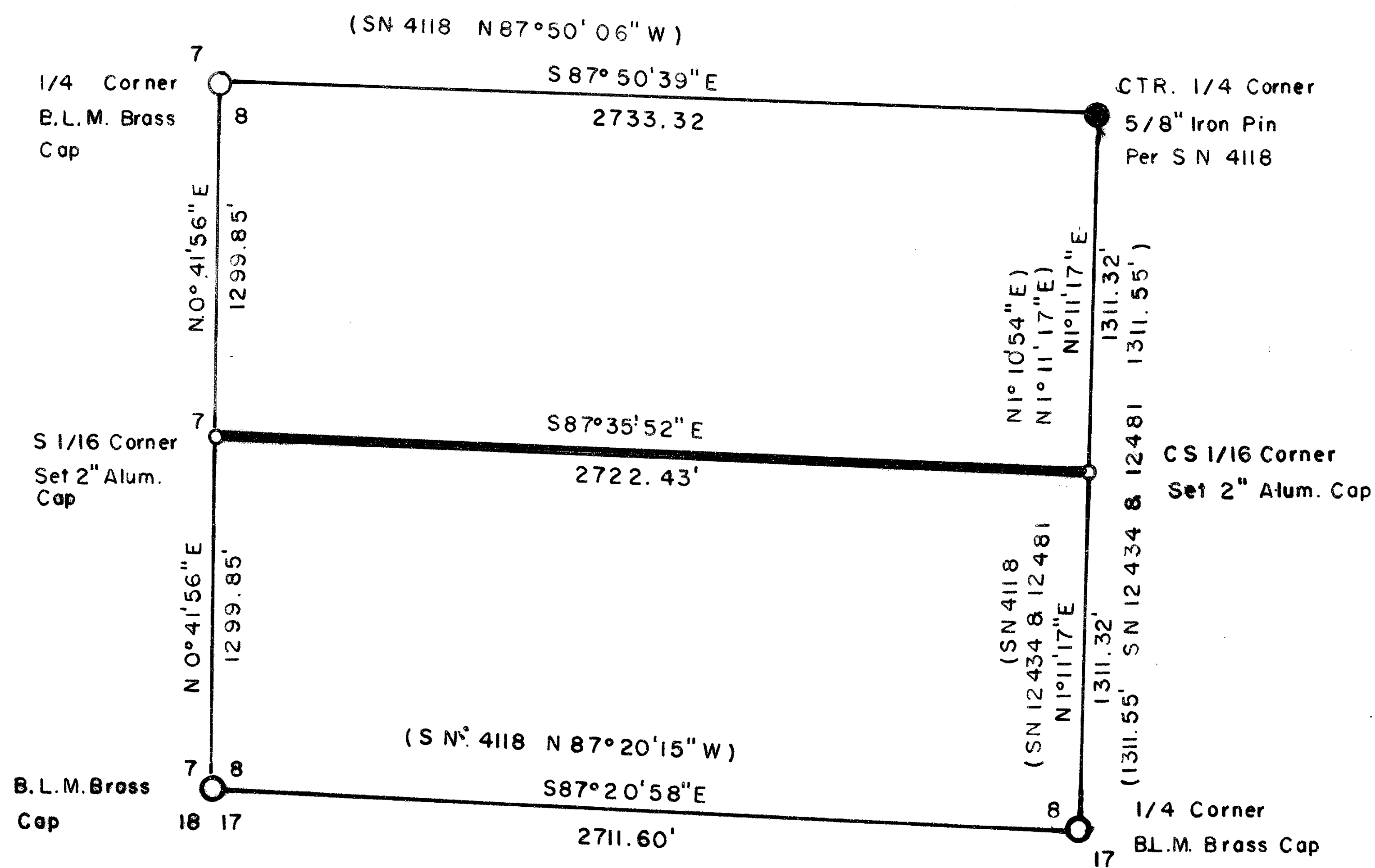
Southwest 1/4 Section 8 T.33S. R.1W, W.M

SURVEY FOR

Environmental Timber Management
21103 Highway 62
Shady Cove, OR 97530

SURVEY BY

Arthur R. Rambo
735 Vista Park Drive
Eagle Point, OR 97524



LEGEND

- Found U.S. B.L.M Brass Cap Monument
 - Found 5/8" Iron Pin Per Survey Number 4118
 - Set 5/8" By 30" Iron Pin With 2" Alum. Cap Marked LS 1086
 - Line Marked
- BASIS OF BEARING

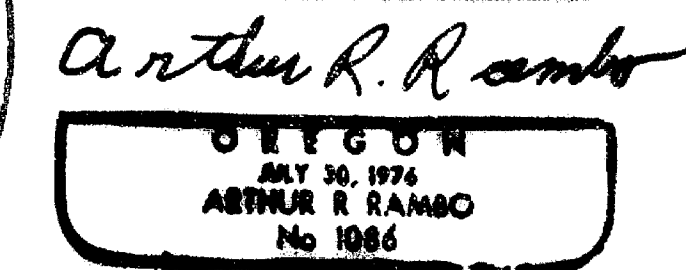
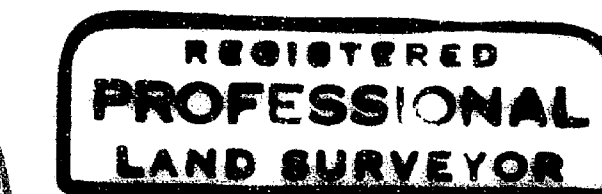
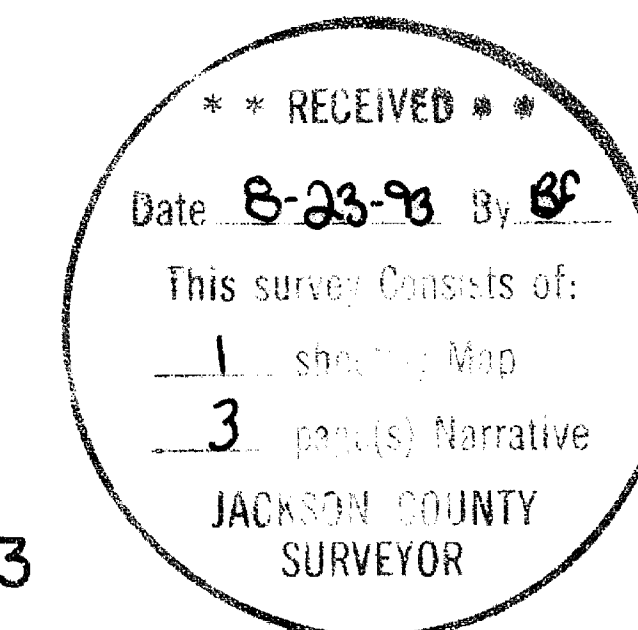
Survey Number 12481, Center 1/4 Corner To South 1/4 Corner

SCALE

1" = 500'

DATE

August 11, 1993



Registration Expires
December 31, 1994

LOCATION: THE SOUTH WEST ONE-QUARTER OF SECTION 8 TOWNSHIP 33 SOUTH RANGE 1 WEST WILLAMETTE MERIDIAN, JACKSON COUNTY, OREGON.

SURVEY FOR: ENVIRONMENTAL TIMBER MANAGEMENT
21103 HIGHWAY 62
SHADY COVE, OREGON 97539

SURVEY BY: ARTHUR R. RAMBO LS1086
735 VISTA PARK DRIVE
EAGLE POINT, OREGON 97524

DATE: AUGUST 11, 1993

BASIS OF BEARING: SURVEY # 12481

PURPOSE: TO MONUMENT THE SOUTH ONE-SIXTEENTH CORNER COMMON TO SECTIONS 7 AND 8 TOWNSHIP 33 SOUTH RANGE 1 WEST AND THE CENTER SOUTH ONE-SIXTEENTH CORNER SECTION 8 TOWNSHIP 33 SOUTH RANGE 1 WEST AND TO MARK THE LINE BETWEEN CORNERS TO BE SET.

PROCEDURE: I RAN A CLOSED TRAVERSE SURVEY AROUND THE SOUTH WEST 1/4 OF SECTION 8 TOWNSHIP 33 SOUTH RANGE 1 WEST. BEGINNING AT THE 1/4 CORNER COMMON TO SECTIONS 7 AND 8, THEN TO THE SECTION CORNER COMMON TO 7, 8, 16, AND 17, THEN TO THE 1/4 CORNER COMMON TO SECTIONS 8 AND 17, THEN TO THE CENTER 1/4 CORNER SECTION 8, THEN TIEING BACK TO THE 1/4 CORNER COMMON TO SECTIONS 7 AND 8 TO CLOSE THE TRAVERSE. I THEN CALCULATED THE POSITIONS FOR THE SOUTH ONE-SIXTEENTH CORNER COMMON TO SECTIONS 7 AND 8, AND THE CENTER SOUTH ONE-SIXTEENTH CORNER SECTION 8. I SET SAID SOUTH ONE-SIXTEENTH CORNER COMMON TO SECTIONS 7 AND 8, AND THE CENTER SOUTH ONE-SIXTEENTH CORNER SECTION 8 AND MARKED THE LINE BETWEEN THE CORNERS SET THIS SURVEY.

CORNERS FOUND AND ACCEPTED FOR CONTROL

ALL MEASUREMENTS TO BEARING TREES ARE TO THE CENTER OF TREE AT THE BASE UNLESS OTHERWISE STATED.

ONE-QUARTER CORNER COMMON TO SECTIONS 7 AND 8 TOWNSHIP 33 SOUTH RANGE 1 WEST. AT THE CORNER LOCATION I FOUND A STANDARD BUREAU OF LAND MANAGEMENT BRASS CAP EXPOSED 12 INCHES IN A MOUND OF STONE MARKED:

T335 R1W
1/4
S7 S8
1966

FROM WHICH:

A 12 1/2 INCH DIAMETER PINE BEARS N 28°17'08" W, 56.43 FEET WITH AN UNOPENED LOWER FACE.

A 10 INCH DIAMETER PINE BEARS N 56°15'40" E, 35.48 FEET WITH AN UNOPENED LOWER FACE.

SECTION CORNER COMMON TO SECTIONS 7, 8, 16 AND 17 TOWNSHIP 33 SOUTH RANGE 1 WEST. AT THE CORNER LOCATION I FOUND A STANDARD BUREAU OF LAND MANAGEMENT BRASS CAP EXPOSED 5 INCHES MARKED:

T33S R1W
S7 S8

S18 S17
1966

FROM WHICH:

A 14 1/2 INCH DIAMETER FIR BEARS N 45°55'19" E, 41.09 FEET WITH AN UNOPENED LOWER FACE.

A 20 INCH DIAMETER FIR BEARS S 85°58'39"E, 23.96 FEET WITH AN UNOPENED LOWER FACE.

A 34 1/2 INCH DIAMETER MADRONA BEARS S 69°17'41" E, 54.68 FEET WITH AN UNOPENED UPPER FACE, AND A LOWER FACE WITH SOME UNREADABLE SCRIBES.

A 7 INCH DIAMETER FIR BEARS S 22°22'57" E, 30.09 FEET WITH AN UNOPENED LOWER FACE.

A 16 INCH DIAMETER FIR BEARS S 3°45'06" E, 15.78 FEET WITH ONE UNOPENED FACE.

A 9 INCH DIAMETER FIR BEARS S 45°23'07" W, 54.11 FEET WITH AN UNOPENED LOWER FACE.

A 14 INCH DIAMETER HOLLOW OAK STUB BEARS S 79°19'24" W, 53.29 FEET.

A 15 INCH DIAMETER CEDAR BEARS N 21°03'26" W, 22.37 FEET WITH AN UNOPENED LOWER FACE.

CENTER ONE-QUARTER CORNER SECTION 8 TOWNSHIP 33 SOUTH RANGE 1 WEST. AT THE CORNER LOCATION I FOUND A 5/8 DIAMETER IRON PIN EXPOSED ONE INCH.

ONE-QUARTER CORNER COMMON TO SECTIONS 8 AND 17 TOWNSHIP 33 SOUTH RANGE 1 WEST. AT THE CORNER LOCATION I FOUND A STANDARD BUREAU OF LAND MANAGEMENT BRASS CAP EXPOSED 6 INCHES MARKED:

T33S R1W
S8
1/4 - -
S17
1976

FROM WHICH:

A 14 INCH DIAMETER FIR BEARS N 42°58'11" E, 25.78 FEET WITH AN UNOPENED LOWER FACE.

A 9 1/2 INCH DIAMETER FIR BEARS S 1°09'42" W, 17.33 FEET WITH AN UNOPENED LOWER FACE.

CORNERS SET THIS SURVEY

ALL MEASUREMENTS ARE TO THE CENTER OF TREE AT BASE UNLESS OTHERWISE STATED. A 3/4 INCH DIAMETER BRASS WASHER MARKED LS 1086 IS NAILED TO THE LOWER FACE OF EACH TREE.

SOUTH ONE-SIXTEENTH CORNER COMMON TO SECTIONS 7 AND 8 TOWNSHIP 33 SOUTH RANGE 1 WEST. AT THE CORNER LOCATION I SET A 5/8 BY 30 INCH REBAR WITH A 2 INCH DIAMETER ALUMINUM CAP EXPOSED 2 INCHES MARKED:

T33S R1W
S7 S17/16 S8
LS 1086

FROM WHICH:

A 6 INCH DIAMETER OAK BEARS N 87°48'30" E, 20.28 FEET
MARKED S1/16 S8 IN UPPER FACE, AND BT IN LOWER FACE.

A 12 INCH DIAMETER OAK BEARS N 9°11'22" W, 26.11 FEET
MARKED S1/16 S7 IN UPPER FACE, AND BT IN LOWER FACE.

CENTER SOUTH ONE-SIXTEENTH CORNER SECTION 8 TOWNSHIP 33 SOUTH
RANGE 1 WEST. AT THE CORNER LOCATION I SET A 5/8 BY 30 INCH
REBAR WITH A 2 INCH DIAMETER ALUMINUM CAP EXPOSED 4 INCHES
MARKED:

7338 R1W
S8
CS 1/16
LS1086

FROM WHICH:

A 9 INCH DIAMETER MADRONA BEARS S 89°59'08" W, 19.57 FEET
MARKED CS1/16 S8 IN UPPER FACE, AND BT IN LOWER FACE.

AN 8 INCH DIAMETER OAK BEARS S 21°22'21" E, 32.61 FEET
MARKED CS1/16 S8 IN UPPER FACE, BT IN LOWER FACE.

**** RECEIVED ****
Date 8-23-93 By AR
This survey consists of:
1 sheet(s) Map
3 page(s) Narrative
JACKSON COUNTY
SURVEYOR

REGISTERED
PROFESSIONAL
LAND SURVEYOR

Arthur R. Rambo

OREGON
JULY 30, 1976
ARTHUR R. RAMBO
No 1086

REGISTRATION EXPIRES
DECEMBER 31, 1994

TAX LOT 33-1W-703