

# MAP OF SURVEY

13465

**LOCATED** in Lot 2, Block 1, of NICKELL ADDITION to the City of Medford in the SW 1/4 of Section 25, T. 37 S., R. 2 W., W.M., Jackson County, Oregon.

February 5, 1993

**SURVEYED FOR:** Ken Gibson  
4070 Willow Springs Rd.  
Central Point, Oregon

**SURVEYED BY:** Edwards Surveying and Land Planning, Inc.  
823 West 8th Street  
Medford, Oregon 97501  
Phone (503) 776-2313

REGISTERED  
PROFESSIONAL  
LAND SURVEYOR

*David A. Edwards*

OREGON  
JULY 26, 1968  
DAVID A. EDWARDS  
2339

Expires 12/31/93

## LEGEND

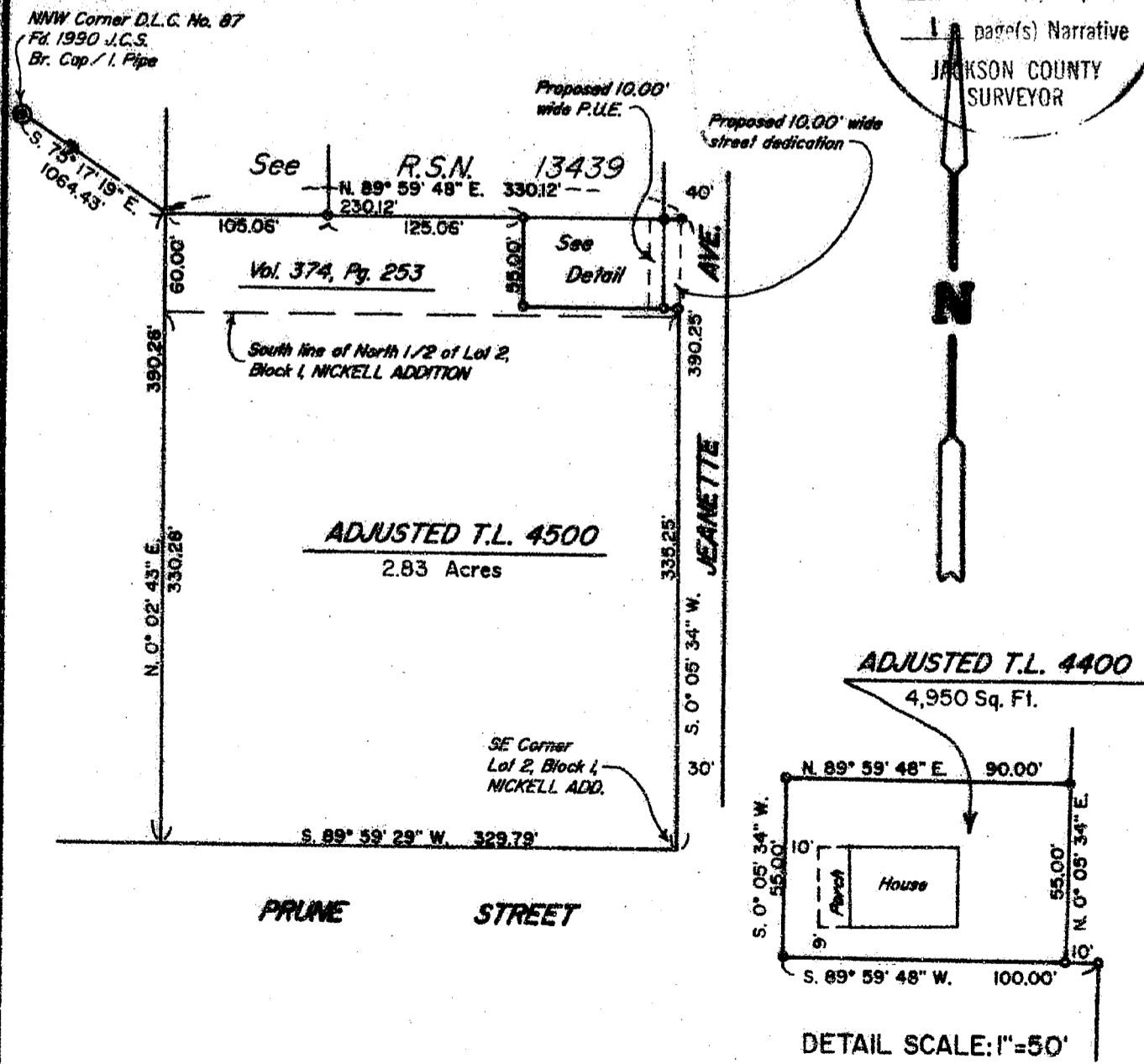
- Indicates 5/8" diam. steel pin w/cap fd. per R.S.N. 13439
  - Indicates 5/8" x 30" steel pin w/red plastic cap mkd. "D.A. EDWARDS-LS 2339" set
- J.C.S. = Jackson County Surveyor  
R.S.N. = Recorded Survey Number  
SCALE: 1" = 100'  
BASIS OF BEARINGS: Existing control per R.S.N. 13439

**\*\* RECEIVED \*\***

Date 4-14-93 By DE

This survey consists of:  
1 sheet(s) Map  
1 page(s) Narrative

JACKSON COUNTY  
SURVEYOR



13465

PAGE 4

## FROM WHICH:

A ROTTEN FIR STUMP BEARS S28°30'E, 4.6 FEET WITH ROTTED UPPER AND LOWER FACES, NO SCRIBES VISIBLE.

A 32 INCH DIAMETER FIR STUMP BEARS S41°55'W, 8.6 FEET WITH ONE ROTTED LOWER FACE, NO SCRIBES VISIBLE.

A 9 1/2 INCH DIAMETER FIR BEARS S69°24'W, 15.7 FEET WITH UPPER AND LOWER FACES UNOPENED.

A 29 1/2 INCH DIAMETER FIR STUMP BEARS N53°02'W, 11.0 FEET WITH ONE FACE UNOPENED.

AN 8 INCH DIAMETER FIR BEARS N43°34'W, 8.4 FEET WITH UPPER AND LOWER FACES UNOPENED.

ONE-QUARTER CORNER COMMON TO SECTIONS 5 AND 32 TOWNSHIP 34 SOUTH AND TOWNSHIP 33 SOUTH RANGE 2 EAST. AT THE CORNER LOCATION I FOUND A 1 3/4 INCH DIAMETER WELDED METAL CAP ON A IRON PIPE EXPOSED 8 INCHES SET SURVEY NUMBER 2004.

## FROM WHICH:

AN 8 1/2 INCH DIAMETER MADRONA BEARS S37°34'W, 15.8 FEET WITH UPPER AND LOWER FACES PARTIALLY HEALED, SOME SCRIBES VISIBLE.

A 10 1/2 INCH DIAMETER FIR BEARS N66°E, 3.0 FEET WITH UPPER AND LOWER FACES UNOPENED.

CORNER SET THIS SURVEY

ALL MEASUREMENTS TO BEARING TREES ARE TO THE CENTER OF TREE AT THE BASE UNLESS OTHERWISE STATED. ALL BEARING TREES HAVE A BRASS WASHER STAMPED LS 1086 NAILED TO THE LOWER FACE OF TREE.

CENTER ONE-QUARTER CORNER SECTION 5 TOWNSHIP 34 SOUTH RANGE 2 EAST. AT THE CORNER LOCATION I SET A 2 INCH DIAMETER ALUMINUM CAP ON A 5/8 BY 30 INCH REBAR EXPOSED 9 INCHES MARKED:

T34S R2E  
S5  
C . 1/4  
LS1086

## FROM WHICH:

A 7 1/2 INCH DIAMETER FIR BEARS S69°23'W, 19.9 FEET MARKED C1/4S5 IN UPPER FACE, BT IN LOWER FACE.

A 12 INCH DIAMETER FIR BEARS S18°29'E, 27.5 FEET MARKED C1/4S5 IN UPPER FACE, BT IN LOWER FACE.

A 10 INCH DIAMETER CEDAR BEARS N55°06'E, 42.2 FEET MARKED C1/4S5 IN UPPER FACE, BT IN LOWER FACE.

A 7 INCH DIAMETER FIR BEARS N25°05'W, 27.0 FEET MARKED C1/4S5 IN UPPER FACE, BT IN LOWER FACE.

NORTH EAST ONE-SIXTEENTH CORNER SECTION 5 TOWNSHIP 34 SOUTH RANGE 2 EAST. AT THE CORNER LOCATION I SET A 2 INCH ALUMINUM CAP ON A 5/8 BY 60 INCH REBAR EXPOSED 7 INCHES IN A MOUND OF STONE MARKED: