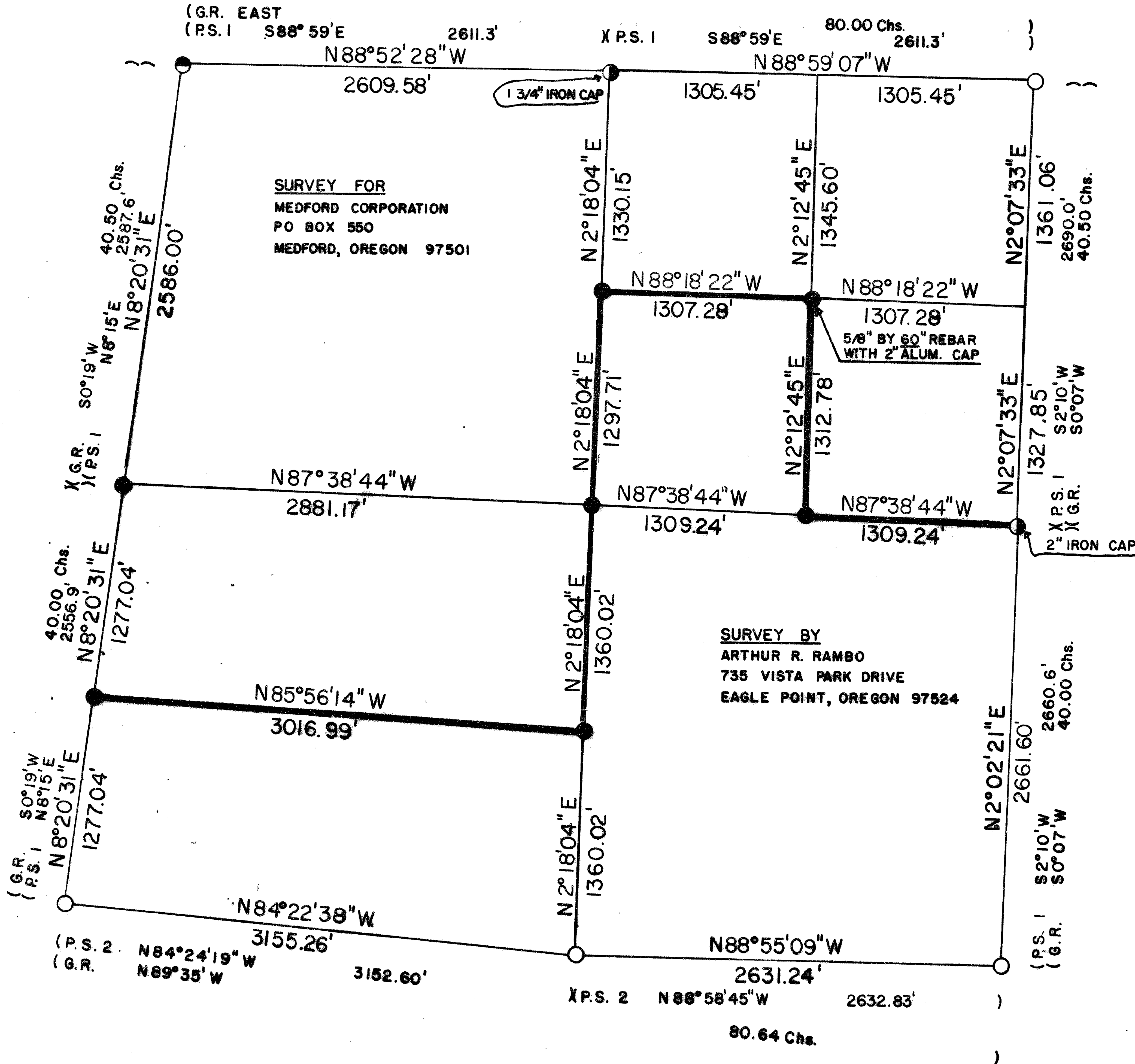
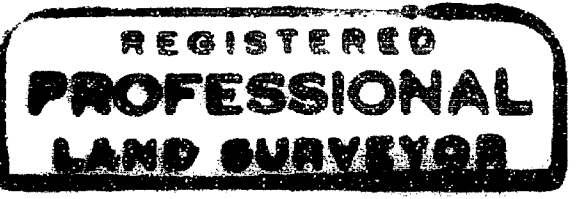


# S5 T34S R2E W.M.

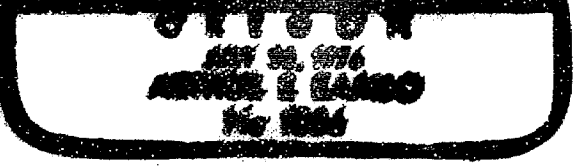


## CERTIFICATE OF SURVEY

I, ARTHUR R. RAMBO, REGISTRATION No. 1086 REGISTERED PROFESSIONAL LAND SURVEYOR STATE OF OREGON, HEREBY CERTIFY THAT THIS MAP CORRECTLY REPRESENTS A SURVEY MADE BY ME OR UNDER MY DIRECTION IN CONFORMANCE WITH THE LAWS OF THE STATE OF OREGON.



Arthur R. Rambo



REGISTRATION EXPIRES DEC. 1994

### LEGEND

- FOUND STANDARD B.L.M. MONUMENT (BRASS CAP)
- FOUND COUNTY MONUMENT (BRASS CAP)
- ⊙ FOUND MONUMENT SET SURVEY No. 2004
- SET 5/8" BY 30" REBAR WITH 2" ALUM. CAP
- G.R. 1855 GOVERNMENT RECORD
- PS. 1 PRIVATE SURVEY No. 2004
- PS 2 PRIVATE SURVEY No. 6550
- LINE POSTED AND BLAZED THIS SURVEY

### SCALE

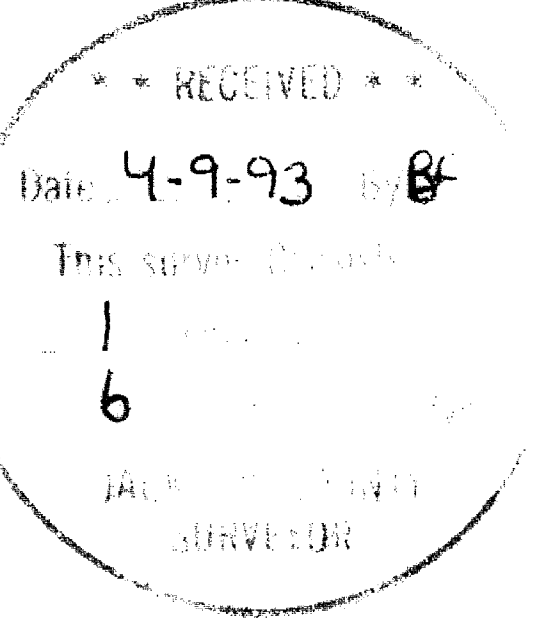
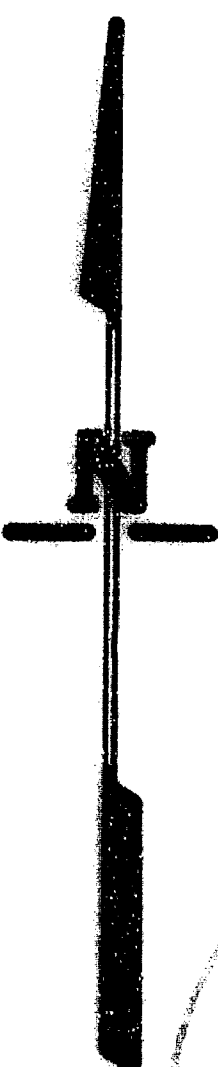
1" = 500'

### DATE

MARCH 31, 1993

### BASIS OF BEARING

SOLAR OBSERVATION



## SURVEY NARRATIVE TO COMPLY WITH O. R. S. 209.250

LOCATION: SECTION 5 TOWNSHIP 34 SOUTH RANGE 2 EAST,  
WILLAMETTE MERIDIAN, JACKSON COUNTY,  
OREGON.

SURVEY FOR: MEDFORD CORPORATION  
P.O. BOX 550  
MEDFORD, OREGON 97501

SURVEY BY: ARTHUR R. RAMBO LS1086  
735 VISTA PARK DRIVE  
EAGLE POINT, OREGON 97524

DATE: MARCH 31, 1993

BASIS OF BEARING: SOLAR OBSERVATION

PURPOSE: TO MARK AND POST THE BOUNDARIES OF MEDCO  
LAND IN THE SAID SECTION 5 AS SHOWN ON THE  
PLAT TO ACCOMPANY THIS NARRATIVE.

PROCEDURE: A SEARCH OF THE RECORDS REVEALED THAT THE  
ORIGINAL SECTION AND QUARTER SECTION  
CORNERS HAD BEEN RE-ESTABLISHED FROM  
ORIGINAL EVIDENCE OR BY PROPORTIONATE  
MEASUREMENT. I FOUND THE QUARTER CORNER  
COMMON TO SECTION 5 AND 6 HAD BEEN  
DISTURBED BY A DOZER.

I RAN A RANDOM LINE CLOSED TRAVERSE AROUND  
THE EXTERIOR OF THE SECTION. I THEN  
CALCULATED A POSITION FOR THE QUARTER  
CORNER COMMON TO SECTIONS 5 AND 6. I THEN  
CALCULATED THE SUBDIVISION OF SAID SECTION  
5 AND ESTABLISHED THE INTERIOR LINES  
CLOSING TO THE EXTERIOR LINE AS SHOWN ON  
THE PLAT TO ACCOMPANY THIS NARRATIVE.

CORNERS FOUND AND ACCEPTED FOR CONTROL

ALL MEASUREMENTS TO BEARING TREES ARE TO THE CENTER OF  
THE TREE AT THE BASE UNLESS STATED OTHERWISE.

SECTION CORNER COMMON TO SECTION 32 AND 33 TOWNSHIP 33 SOUTH  
RANGE 2 EAST AND SECTION 4 AND 5 TOWNSHIP 34 SOUTH RANGE 2  
EAST. AT THE CORNER LOCATION I FOUND A STANDARD BUREAU OF  
LAND MANAGEMENT MONUMENT EXPOSED 6 INCHES MARKED:

T33S R2E  
S32 S33  
+  
S5 S4  
T34S  
1965

## FROM WHICH:

A 14 1/2 INCH DIAMETER FIR BEARS N24°36'W, 16.0  
FEET WITH AN UNOPENED UPPER AND LOWER FACE.

A 15 1/2 INCH DIAMETER FIR BEARS N11°53'E, 24.7  
FEET WITH AN UNOPENED LOWER FACE.

PAGE 2

A 14 INCH DIAMETER MADRONA BEARS N44°00'E, 4.3 FEET WITH AN UNOPENED UPPER AND LOWER FACE.

A 19 INCH DIAMETER MADRONA BEARS S74°27'E, 5.5 FEET WITH AN UPPER FACE PARTIALLY HEALED AND ROTTED, SOME SCRIBES VISIBLE. LOWER FACE, SOME SCRIBES VISIBLE.

A 10 1/2 INCH DIAMETER DEAD MADRONA STOB BEARS S0°59'W, 19.1 FEET WITH AN UPPER FACE SCRIBED RS461, LOWER FACE SCRIBED BT.

A 25 INCH DIAMETER FIR BEARS N67°27'W, 34.1 FEET WITH LOWER FACE ONLY, UNOPENED.

A 14 1/2 INCH DIAMETER FIR BEARS S74°27'E, 36.0 FEET WITH LOWER FACE ONLY, UNOPENED.

SECTION CORNER COMMON TO SECTIONS 5, 6, 31 AND 32 TOWNSHIP 34 SOUTH RANGE 2 EAST. AT THE CORNER LOCATION I FOUND A JACKSON COUNTY MONUMENT EXPOSED 5 INCHES IN A MOUND OF STONE MARKED:

T33S R2E  
31 32  
+  
6 5  
T34S  
CS  
1987

FROM WHICH:

A 11 INCH DIAMETER HEMLOCK BEARS N28°39'W, 25.4 FEET WITH CS IN UPPER FACE, BT IN LOWER FACE.

A 12 1/2 INCH DIAMETER CEDAR BEARS N39°29'E, 13.3 FEET WITH CS IN UPPER FACE, BT IN LOWER FACE.

A 9 1/2 INCH DIAMETER FIR BEARS S5°09'E, 46.9 FEET WITH CS IN UPPER FACE, BT IN LOWER FACE.

A 38 1/2 INCH DIAMETER CEDAR BEARS S53°42'W, 30.8 FEET WITH BOTH UPPER AND LOWER FACES UNOPENED.

SECTION CORNER COMMON TO SECTIONS 5, 6, 7 AND 8 TOWNSHIP 34 SOUTH RANGE 2 EAST. AT THE CORNER LOCATION I FOUND A STANDARD BUREAU OF LAND MANAGEMENT MONUMENT EXPOSED 7 1/2 INCHES WITH A 2 INCH DIAMETER METAL PIPE ALONG EAST EDGE EXPOSED 5 1/2 INCHES. B.L.M. MONUMENT MARKED:

T34S R2E  
6 5  
+  
7 8  
1968

FROM WHICH:

A 19 1/2 INCH DIAMETER FIR BEARS S24°49'E, 26.3 FEET WITH A LOWER FACE ONLY, UNOPENED.

A 29 1/2 INCH DIAMETER FIR BEARS S21°22'W, 6.7 FEET WITH UPPER AND LOWER FACES UNOPENED.

A 9 INCH DIAMETER FIR BEARS N32°19'W, 23.4 FEET WITH A LOWER FACE ONLY, UNOPENED.

A 38 INCH DIAMETER MADRONA BEARS N58°48'E, 56.9 FEET WITH UPPER AND LOWER FACES UNOPENED.

A 21 INCH DIAMETER FIR BEARS N88°27'E, 45.4 FEET WITH LOWER FACES ONLY, UNOPENED.

PAGE 3

SECTION CORNER COMMON TO SECTIONS 4, 5, 8 AND 9 TOWNSHIP 34  
SOUTH RANGE 2 EAST. AT THE CORNER LOCATION I FOUND A STANDARD  
BUREAU OF LAND MANAGEMENT MONUMENT EXPOSED 4 INCHES MARKED:

T34S R2E  
5 4  
+  
8 9  
1968

FROM WHICH:

A 2 INCH DIAMETER PIPE WITH A WELDED CAP AGAINST  
EAST EDGE OF CORNER EXPOSED 15 1/2 INCHES MARKED:

9 8                   NOTE: THIS CAP IS FACING  
RS461                   SOUTH INSTEAD OF  
4 5                   NORTH.

AN 18 1/2 INCH DIAMETER CEDAR BEARS S53°07'W, 62.6  
FEET WITH UNOPENED FACES.

AN 18 1/2 INCH DIAMETER FIR BEARS N50°32'W, 47.5  
FEET WITH UNOPENED FACES.

A 33 INCH DIAMETER FIR STUMP BEARS N29°04'E, 14.5  
FEET WITH UNOPENED FACES.

A 35 INCH DIAMETER FIR BEARS S23°23'E, 7.4 FEET  
WITH UNOPENED FACES.

ONE-QUARTER CORNER COMMON TO SECTIONS 4 AND 5 TOWNSHIP 34  
SOUTH RANGE 2 EAST. AT THE CORNER LOCATION I FOUND A 2 INCH  
DIAMETER IRON PIPE EXPOSED 9 INCHES WITH A WELDED 2 INCH  
DIAMETER CAP MARKED:

5  
RS461                   NOTE: THIS CAPE IS FACING  
4                   WEST INSTEAD OF  
                          NORTH.

FROM WHICH:

A 10 INCH DIAMETER HEMLOCK BEARS N11°18'E, 16.8  
FEET WITH SOME SCRIBES VISIBLE IN PARTIALLY HEALED  
UPPER AND LOWER FACE.

A 26 INCH DIAMETER HEMLOCK BEARS S50°22'W, 16.1  
FEET WITH ONE UPPER FACE, SOME SCRIBES VISIBLE IN  
PARTIALLY HEALED FACE.

ONE-QUARTER CORNER COMMON TO SECTIONS 6 AND 5 TOWNSHIP 34  
SOUTH RANGE 2 EAST. FOUND 2 INCH DIAMETER PIPE DISTURBED  
BY DOZER IN A SIDE WAYS POSITION. I REMOVED SAID PIPE AND  
RESET CORNER BY PROPORTIONATE MEASUREMENT. SEE CORNERS SET  
THIS SURVEY.

ONE-QUARTER CORNER COMMON TO SECTIONS 5 AND 8 TOWNSHIP 34  
SOUTH RANGE 2 EAST. AT THE CORNER LOCATION I FOUND A STANDARD  
BUREAU OF LAND MANAGEMENT MONUMENT EXPOSED 7 INCHES IN A  
MOUND OF STONE MARKED:

T34S R2E  
S5  
1/4 --  
S8  
1968

## FROM WHICH:

A ROTTEN FIR STUMP BEARS S28°30'E, 4.6 FEET WITH ROTTED UPPER AND LOWER FACES, NO SCRIBES VISIBLE.

A 32 INCH DIAMETER FIR STUMP BEARS S41°55'W, 8.6 FEET WITH ONE ROTTED LOWER FACE, NO SCRIBES VISIBLE.

A 9 1/2 INCH DIAMETER FIR BEARS S69°24'W, 15.7 FEET WITH UPPER AND LOWER FACES UNOPENED.

A 29 1/2 INCH DIAMETER FIR STUMP BEARS N53°02'W, 11.0 FEET WITH ONE FACE UNOPENED.

AN 8 INCH DIAMETER FIR BEARS N43°34'W, 8.4 FEET WITH UPPER AND LOWER FACES UNOPENED.

ONE-QUARTER CORNER COMMON TO SECTIONS 5 AND 32 TOWNSHIP 34 SOUTH AND TOWNSHIP 33 SOUTH RANGE 2 EAST. AT THE CORNER LOCATION I FOUND A 1 3/4 INCH DIAMETER WELDED METAL CAP ON A IRON PIPE EXPOSED 8 INCHES SET SURVEY NUMBER 2004.

## FROM WHICH:

AN 8 1/2 INCH DIAMETER MADRONA BEARS S37°34'W, 15.8 FEET WITH UPPER AND LOWER FACES PARTIALLY HEALED, SOME SCRIBES VISIBLE.

A 10 1/2 INCH DIAMETER FIR BEARS N66°E, 3.0 FEET WITH UPPER AND LOWER FACES UNOPENED.

CORNER SET THIS SURVEY

ALL MEASUREMENTS TO BEARING TREES ARE TO THE CENTER OF TREE AT THE BASE UNLESS OTHERWISE STATED. ALL BEARING TREES HAVE A BRASS WASHER STAMPED LS 1086 NAILED TO THE LOWER FACE OF TREE.

CENTER ONE-QUARTER CORNER SECTION 5 TOWNSHIP 34 SOUTH RANGE 2 EAST. AT THE CORNER LOCATION I SET A 2 INCH DIAMETER ALUMINUM CAP ON A 5/8 BY 30 INCH REBAR EXPOSED 9 INCHES MARKED:

T34S R2E  
S5  
C . 1/4  
LS1086

## FROM WHICH:

A 7 1/2 INCH DIAMETER FIR BEARS S69°23'W, 19.9 FEET MARKED C1/4S5 IN UPPER FACE, BT IN LOWER FACE.

A 12 INCH DIAMETER FIR BEARS S18°29'E, 27.5 FEET MARKED C1/4S5 IN UPPER FACE, BT IN LOWER FACE.

A 10 INCH DIAMETER CEDAR BEARS N55°06'E, 42.2 FEET MARKED C1/4S5 IN UPPER FACE, BT IN LOWER FACE.

A 7 INCH DIAMETER FIR BEARS N25°05'W, 27.0 FEET MARKED C1/4S5 IN UPPER FACE, BT IN LOWER FACE.

NORTH EAST ONE-SIXTEENTH CORNER SECTION 5 TOWNSHIP 34 SOUTH RANGE 2 EAST. AT THE CORNER LOCATION I SET A 2 INCH ALUMINUM CAP ON A 5/8 BY 60 INCH REBAR EXPOSED 7 INCHES IN A MOUND OF STONE MARKED:

T34S R2E  
S5  
NE . 1/16  
LS1086

## FROM WHICH:

A 12 1/2 INCH DIAMETER CEDAR BEARS S68°08'W, 56.2 FEET MARKED NE1/16S5 IN UPPER FACE, BT IN LOWER FACE.

A 8 1/2 INCH DIAMETER FIR BEARS S7°03'W, 60.9 FEET MARKED WITH NE1/16S5 IN UPPER FACE, BT IN LOWER FACE.

SOUTH ONE-SIXTEENTH CORNER COMMON TO SECTIONS 5 AND 6 TOWNSHIP 34 SOUTH RANGE 2 EAST. AT THE CORNER LOCATION I SET A 2 INCH ALUMINUM CAP ON A 5/8 BY 30 INCH REBAR EXPOSED 4 INCHES IN A MOUND OF STONE MARKED:

T34S R2E  
S1/16  
S6 . S5  
LS1086

## FROM WHICH:

A 9 INCH DIAMETER FIR BEARS N60°36'E, 9.4 FEET MARKED S1/16S5 IN UPPER FACE, BT IN LOWER FACE.

A 11 INCH DIAMETER FIR BEARS N68°19'W, 15.7 FEET MARKED S1/16S6 IN UPPER FACE, BT IN LOWER FACE.

CENTER EAST ONE-SIXTEENTH CORNER SECTION 5 TOWNSHIP 34 SOUTH RANGE 2 EAST. AT THE CORNER LOCATION I SET A 2 INCH ALUMINUM CAP ON A 5/8 BY 30 INCH REBAR EXPOSED 5 INCHES IN A MOUND OF STONE MARKED:

T34S R2E  
S5  
CE . 1/16  
LS1086

## FROM WHICH:

A 7 1/2 INCH DIAMETER FIR BEARS S6°42'W, 12.3 FEET MARKED CE1/16S5 IN UPPER FACE, BT IN LOWER FACE.

A 13 INCH DIAMETER MADRONA BEARS N59°55'W, 12.9 FEET MARKED CE1/16S5 IN UPPER FACE, BT IN LOWER FACE.

CENTER NORTH ONE-SIXTEENTH CORNER SECTION 5 TOWNSHIP 34 SOUTH RANGE 2 EAST. AT THE CORNER LOCATION I SET A 2 INCH ALUMINUM CAP ON A 5/8 BY 30 INCH REBAR EXPOSED 5 INCHES MARKED:

T34S R2E  
S5  
CN . 1/16  
LS1086

## FROM WHICH:

A 7 1/2 DIAMETER FIR BEARS N2°37'W, 12.9 FEET MARKED CN1/16S5 IN UPPER FACE, BT IN LOWER FACE.

A 9 1/2 INCH DIAMETER HEMLOCK BEARS S65°06'E, 12.5 FEET MARKED CN1/16S5 IN UPPER FACE. BT IN LOWER FACE.

CENTER SOUTH ONE-SIXTEENTH CORNER SECTION 5 TOWNSHIP 34 SOUTH RANGE 2 EAST. AT THE CORNER LOCATION I SET A 2 INCH DIAMETER ALUMINUM CAP ON A 5/8 BY 30 INCH REBAR EXPOSED 6 INCHES MARKED:

T34S R2E  
 S5  
 CS . 1/16  
 LS1086

FROM WHICH:

A 8 INCH DIAMETER CHINKAPIN BEARS N38°52'W, 12.4 FEET MARKED CS1/16S5 IN UPPER FACE, BT IN LOWER FACE.

A 9 INCH DIAMETER FIR BEARS S57°23'W, 40.3 FEET MARKED CS1/16S5 IN UPPER FACE, BT IN LOWER FACE.

ONE-QUARTER CORNER COMMON TO SECTIONS 6 AND 5 TOWNSHIP 34 SOUTH RANGE 2 EAST. AT THE CORNER LOCATION I SET A 2 INCH DIAMETER ALUMINUM CAP ON A 5/8 BY 30 INCH REBAR EXPOSED 6 INCHES MARKED:

T34S R2E  
 1/4  
 S6 . S5  
 LS1086

FROM WHICH:

A 7 1/2 INCH DIAMETER FIR BEARS S67°30'W, 22.6 FEET MARKED 1/4S6 IN UPPER FACE. BT IN LOWER FACE.

A 8 INCH DIAMETER FIR BEARS S49°02'E, 33.8 FEET MARKED 1/4S5 IN UPPER FACE, BT IN LOWER FACE.

A 10 INCH DIAMETER FIR BEARS S10°39'W, 41.5 FEET MARKED 1/4S6 IN UPPER FACE, BT IN LOWER FACE.

A 6 1/2 INCH DIAMETER FIR BEARS N53°37'E, 33.0 FEET MARKED 1/4S5 IN UPPER FACE, BT IN LOWER FACE.

A 26 INCH DIAMETER FIR STUMP BEARS S85°12'W, 25.1 FEET WITH UPPER AND LOWER FACES HEALED.

REGISTERED  
**PROFESSIONAL**  
 LAND SURVEYOR

*Arthur R. Rambo*

OREGON  
 JULY 30, 1976  
 ARTHUR R RAMBO  
 No 1086

\*\* RECEIVED \*\*  
 Date 4-9-93 By BE  
 This survey consists of:  
1 sheet(s) Map  
6 page(s) Narrative  
 JACKSON COUNTY  
 SURVEYOR

REGISTRATION EXPIRES DEC. 1994

TAX LOT #34-2E-00900