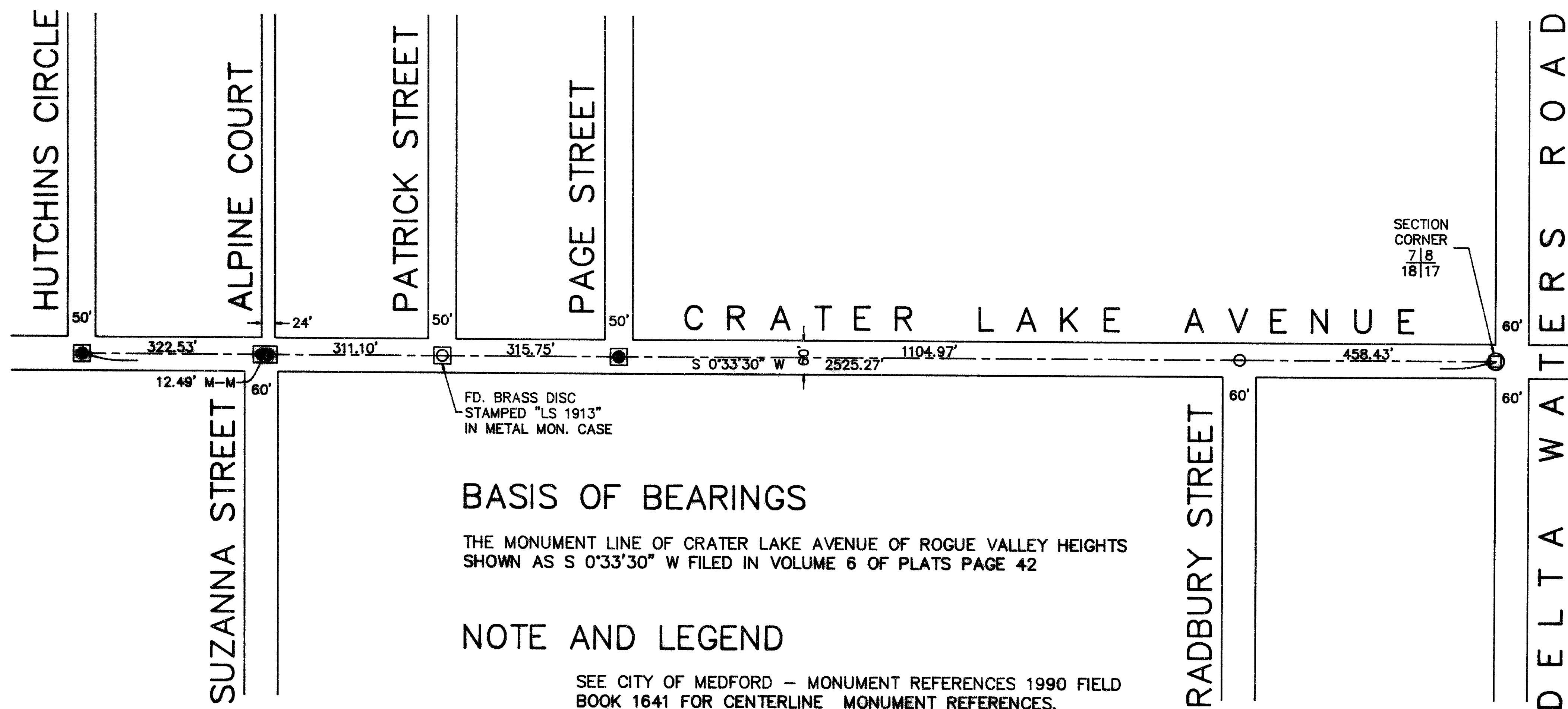


MAP OF SURVEY

OF
EXISTING MONUMENTS ON CRATER LAKE AVENUE
BETWEEN HUTCHINS CIRCLE AND DELTA WATERS ROAD
LOCATED IN
SECTIONS 17 AND 18, T.37S., R.1W., W.M.
CITY OF MEDFORD, JACKSON COUNTY, OREGON

JANUARY 1993

SURVEY BY:
CITY OF MEDFORD
SURVEY DIVISION
411 WEST EIGHTH STREET
MEDFORD, OREGON 97501



BASIS OF BEARINGS

THE MONUMENT LINE OF CRATER LAKE AVENUE OF ROGUE VALLEY HEIGHTS
SHOWN AS S 0°33'30" W FILED IN VOLUME 6 OF PLATS PAGE 42

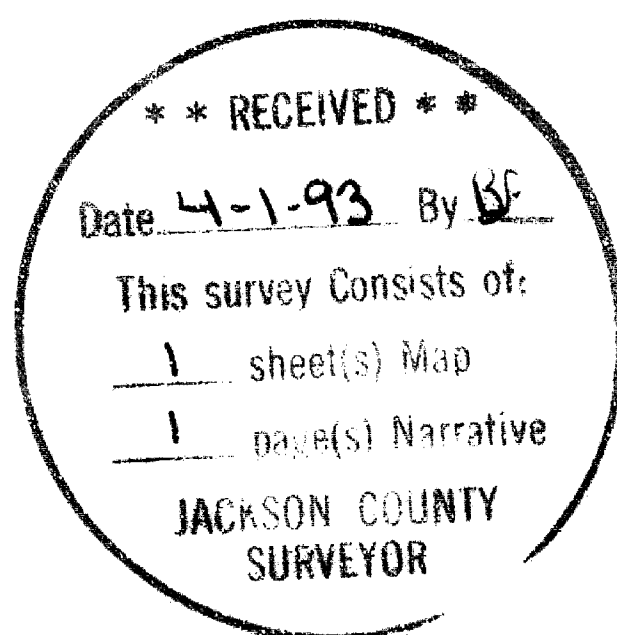
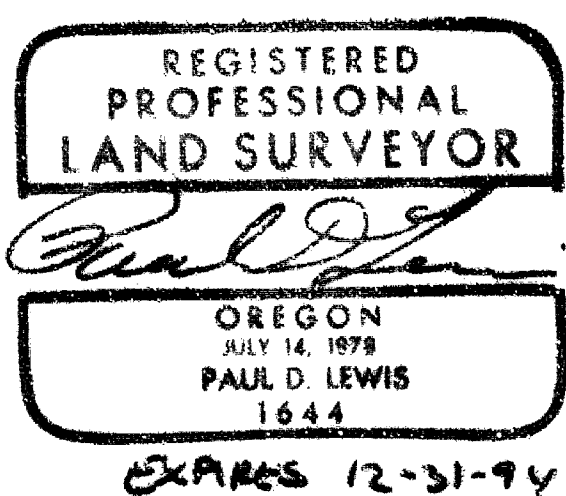
NOTE AND LEGEND

SEE CITY OF MEDFORD - MONUMENT REFERENCES 1990 FIELD
BOOK 1641 FOR CENTERLINE MONUMENT REFERENCES.

- FOUND BRASS CAP IN CONCRETE, REPLACED WITH 2" PIPE AND 2-1/2" DIA. BRASS DISC STAMPED "1644" IN METAL MONUMENT CASE, FLUSH WITH PAVING, UNLESS NOTED OTHERWISE.
- FOUND SPIKE, REPLACED WITH 2" PIPE AND 2-1/2" DIA. BRASS DISC STAMPED "1644" IN METAL MONUMENT CASE, FLUSH WITH PAVING.
- ⊙ FOUND SQUARE HEAD BOLT BELOW A BRASS DISC IN CONCRETE, RETAINED BOLT AS SECTION CORNER AND PLACED METAL MONUMENT CASE AROUND BOLT, FLUSH WITH PAVING.

M-M MONUMENT TO MONUMENT

SCALE: 1" = 200'



SURVEY NO. 13441

SURVEY NARRATIVE TO COMPLY WITH O.R.S. 209.250

SURVEY FOR: CITY OF MEDFORD
411 W. 8TH STREET
MEDFORD, OR 97501

LOCATION: SECTIONS 17 AND 18, TOWNSHIP 37 SOUTH, RANGE
1 WEST, WILLAMETTE MERIDIAN, CITY OF
MEDFORD, JACKSON COUNTY, OREGON.

PURPOSE: TO PERPETUATE EXISTING CENTERLINE
MONUMENTATION ALONG A PORTION OF CRATER LAKE
AVENUE.

PROCEDURE: EXISTING CENTERLINE MONUMENTS ALONG CRATER
LAKE AVENUE WERE TIED BY A FIELD TRAVERSE
AND RESULTING SURVEY DATA WAS COMPARED WITH
PREVIOUS FILED SURVEYS AND CITY OF MEDFORD
FIELD BOOK INFORMATION. THE COMPARISONS
SUPPORTED THE PRESENT CENTERLINE MONUMENT
LOCATIONS AND AS SUCH, THESE LOCATIONS WERE
HELD. ALL EXISTING MONUMENTS WERE
REFERENCED AND RECORDED IN CITY OF MEDFORD
FIELD BOOK 1641. AFTER REFERENCING, ALL
EXISTING CENTERLINE MONUMENTS WERE REMOVED
AND REPLACED WITH METAL MONUMENT CASES AS
DESCRIBED ON THE ATTACHED SURVEY MAP.

SURVEY BY: CITY OF MEDFORD
SURVEY DIVISION
411 W. 8TH STREET
MEDFORD, OR 97501

DATE: MAY, 1992

