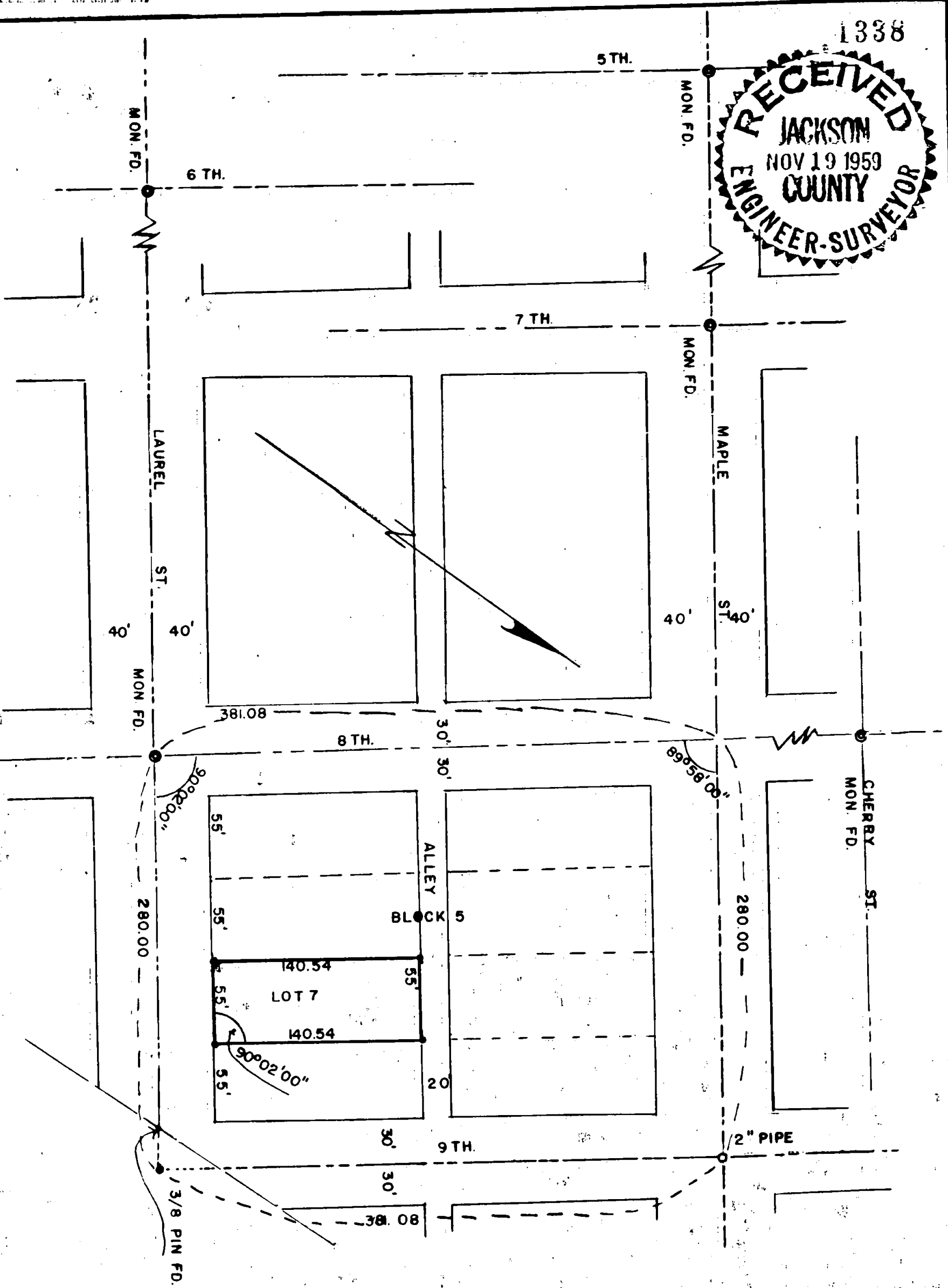
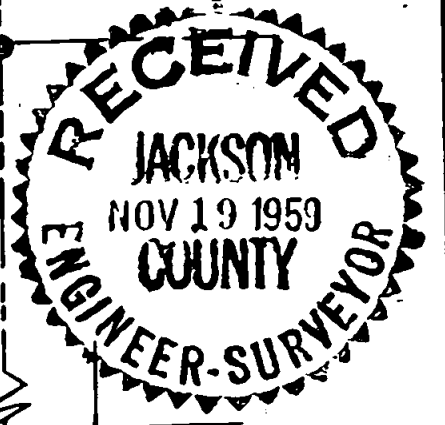


1338



SURVEY IN CENTRAL POINT
PATTISON ADDITION LOT 7 BLOCK 5
FOR
W. L. MOORE

BY EDW. MCGINTY
MEDFORD, OREGON
OCTOBER, 1959

SCALE 1" = 100'
● = 5/8 I. PIN
⊙ = CITY MONUMENT

REGISTERED
OREGON
LAND SURVEYOR

Edward A. McGinty
JULY 15, 1953
EDWARD A. MCGINTY
301

1338

Survey No. 8881

Survey Narrative to comply with O.R.S. 209-120 and O.R.S. 209-205

Survey for: W. L. Moore

Survey by: Edward A. McGinty, L.S. 10/22/59

PRECEDENCE OF SURVEY:

Determined the center line of Laurel St. from monuments found on Laurel St., at 6th St. and 8th Street, and a 3/8 inch iron pin on a projection thereof.

Determined the center line of Maple from monuments on Maple at 5th St. and 7th St., and an old wooden hub on 9th St. approximately 36 inches deep. This was replaced by a 2 inch iron pipe, 18 inches under the surface. (Prior to finding the wooden hub on the center line of 9th St, an attempt was made to determine the easterly line of 9th St. from iron pins along said line which either have been moved or are inconsistent as indicated in record surveys)

The center line of 8th St. was determined from monuments found at 8th Street at Laurel and Cherry. From wooden hub found on 9th St. and Maple, now a 2 inch iron pipe, ran 9th St. parallel to 8th St.

At proportional distances surveyed Lot 7, Blk. 5, according to measurements as shown.

