

SE 1/4 S4 T35S R1E W.M.

CORRECTION FOR SURVEY No. 12,768

SURVEY FOR

MEDFORD CORPORATION
PO BOX 550
MEDFORD, OREGON
97501

SURVEY BY

ARTHUR R. RAMBO
735 VISTA PARK DRIVE
EAGLE POINT, OREGON
97524

REGISTERED
PROFESSIONAL
LAND SURVEYOR

Arthur R. Rambo

OREGON
MAY 20, 1976
ARTHUR R. RAMBO
No. 1086

REGISTRATION EXPIRES 31 DEC, 1994

CERTIFICATE OF SURVEY

I, ARTHUR R. RAMBO, REGISTRATION No. 1086
REGISTERED PROFESSIONAL LAND SURVEYOR
STATE OF OREGON, HEREBY CERTIFY THAT
THIS MAP CORRECTLY REPRESENTS A SURVEY
MADE BY ME OR UNDER MY DIRECTION IN
CONFORMANCE WITH THE LAWS OF THE
STATE OF OREGON.

LEGEND

- FOUND COUNTY MONUMENT (BRASS CAP)
- SET 5/8" BY 30" REBAR WITH 2" ALUM. CAP
- GR 1854 GOVERNMENT RECORD
- ⊙ REMOVED MONUMENT SET SURVEY No. 12,768

SCALE

1" = 500'

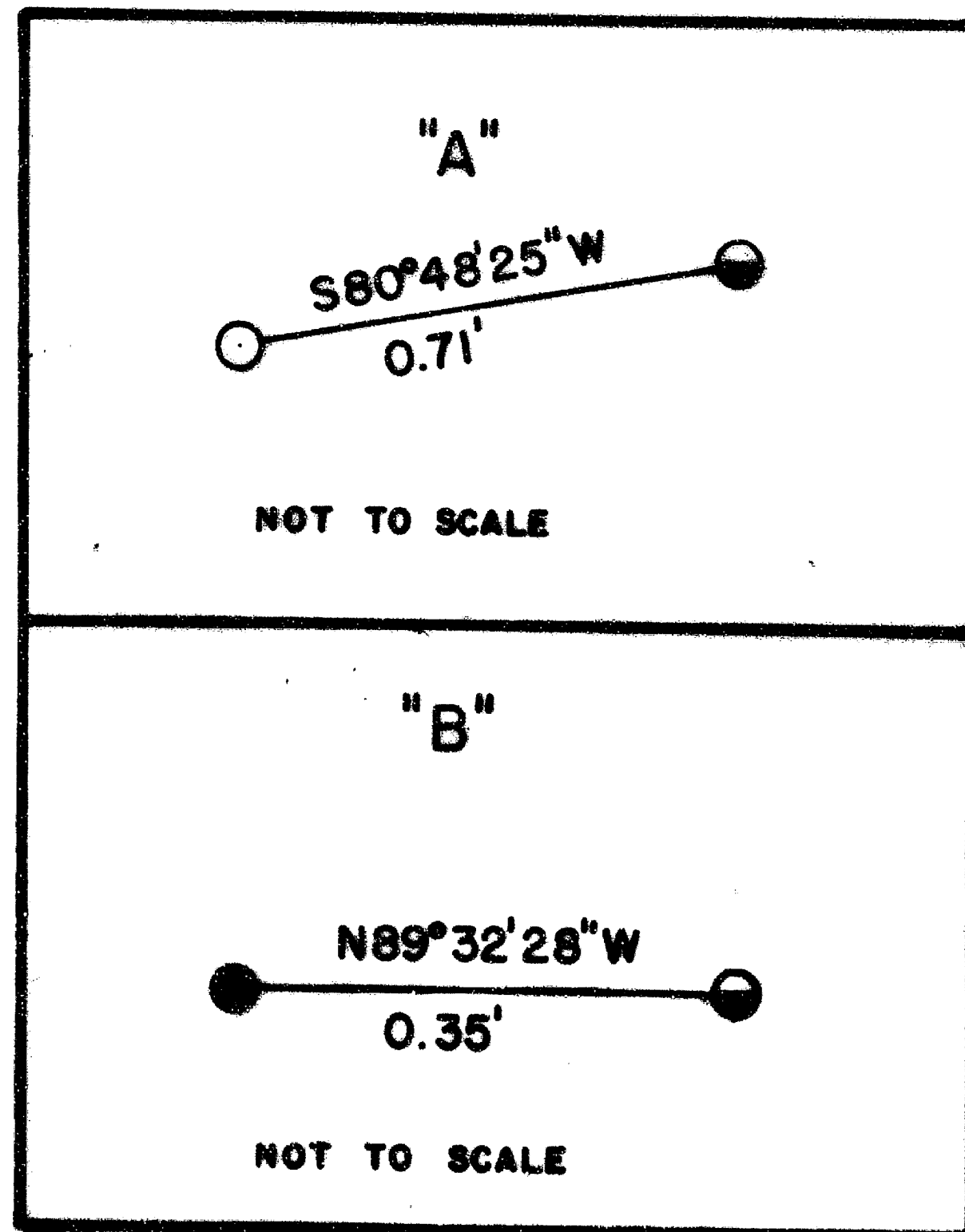
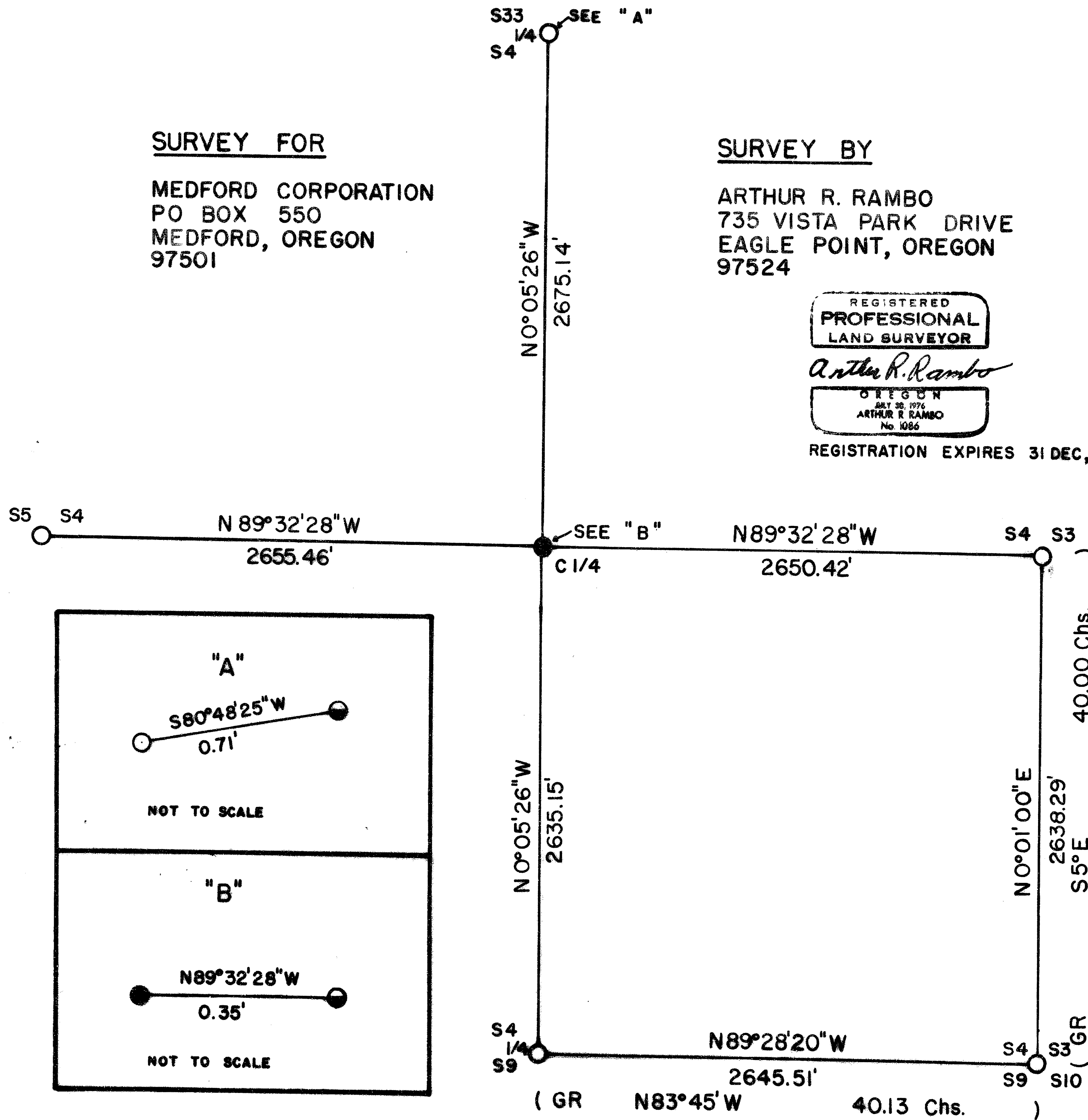
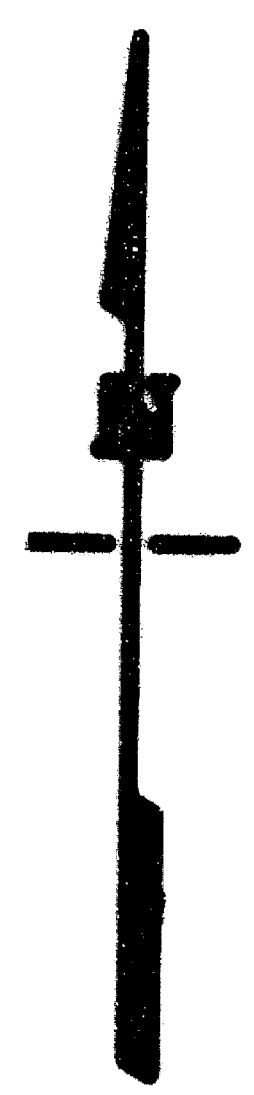
BASIS OF BEARING

SURVEY No. 10465

DATE

FEBRUARY 11, 1993

** RECEIVED **
 Date 2-11-93 By AR
 This survey consists of:
 Street Map
 Narrative
 JACOB COUNTY
 SURVEYOR



SURVEY NARRATIVE TO COMPLY WITH O.R.S. 209.250

LOCATION: SOUTHEAST QUARTER SECTION 4 TOWNSHIP 35 SOUTH
RANGE 1 EAST WILLAMETTE MERIDIAN, JACKSON COUNTY,
OREGON. CORRECTION SURVEY FOR #12768

SURVEY FOR: MEDFORD CORPORATION
P.O. BOX 550
MEDFORD, OREGON 97501

SURVEY BY: ARTHUR R. RAMBO LS1086
735 VISTA PARK DRIVE
EAGLE POINT, OREGON 97524

DATE: FEBRUARY 11, 1993

BASIS OF BEARING: SURVEY NUMBER 10465

PURPOSE: TO FILE A CORRECTION SURVEY FOR SURVEY NUMBER 12768
TO SHOW THE LOCATION OF JACKSON COUNTY MONUMENT AT
NORTH ONE-QUARTER CORNER OF SAID SECTION 4, NOT FOUND
DURING SURVEY NUMBER 12768. TO REMOVE MONUMENT SET AT
NORTH ONE-QUARTER CORNER ON SURVEY NUMBER 12768. TO
MOVE CENTER ONE-QUARTER CORNER TO PROPER LOCATION PER
FOUND COUNTY MONUMENT AT SAID NORTH ONE-QUARTER CORNER
SECTION 4.

PROCEDURE: TIED TO FOUND JACKSON COUNTY MONUMENT AT ONE-QUARTER
CORNER COMMON TO SECTION 4 TOWNSHIP 35 SOUTH RANGE 1
EAST AND SECTION 33 TOWNSHIP 34 SOUTH RANGE 1 EAST
FROM CONTROL NETWORK ESTABLISHED SURVEY NUMBER 12768.
UTILIZING THIS TIE AND CONTROL NETWORK ESTABLISHED
SURVEY NUMBER 12768, SECTION 4 WAS RECOMPUTED. THE
POSITION FOR THE CENTER ONE-QUARTER CORNER WAS
RECALCULATED AND ESTABLISHED AS SHOWN ON THE MAP TO
ACCOMPANY THIS NARRATIVE.

CORNERS FOUND AND ACCEPTED FOR CONTROL

ALL MEASUREMENTS TO BEARING TREES ARE TO THE CENTER OF THE TREE
AT THE BASE UNLESS STATED OTHERWISE.

ONE-QUARTER CORNER COMMON TO SECTION 33 TOWNSHIP 34 SOUTH RANGE 1
EAST AND SECTION 4 TOWNSHIP 35 SOUTH RANGE 1 EAST. AT THE CORNER
LOCATION I FOUND A MOUND OF STONE, AND A 2 1/2 INCH JACKSON COUNTY
MONUMENT 1 INCH UNDERGROUND MARKED:

T34S R1E
33
1/4S ---
4
T35S
C.S.
1989

FROM WHICH:

A 13 1/2 INCH DIAMETER OAK BEARS S41° 36'W 104.6 FEET WITH
UNOPENED UPPER AND LOWER FACES.

PAGE 2

A 10 1/2 DIAMETER OAK BEARS N59° 20'W 43.6 FEET WITH UNOPENED UPPER AND LOWER FACES.

AN INDETERMINATE SIZE ROTTED PINE STUMP BEARS S71° 23'W 25.8 FEET.

I TAKE TWO NEW BEARING TREES MARKED 1/484 IN UPPER FACE, BT WITH BRASS WASHER STAMPED LS 1086 IN LOWER FACE.

AN 11 1/2 INCH DIAMETER OAK BEARS S71° 53'E 405.1 FEET.

A 14 INCH DIAMETER OAK BEARS S53° 41'E 355.7 FEET.

SEE SURVEY NUMBER 12768 FOR INFORMATION ON OTHER CORNERS ACCEPTED FOR SUBDIVISION OF SAID SECTION 4 TOWNSHIP 35 SOUTH RANGE 1 EAST.

CORNER SET THIS SURVEY

ALL MEASUREMENTS TO BEARING TREES ARE TO THE CENTER OF TREE AT BASE UNLESS OTHERWISE STATED. BEARING TREES HAVE A BRASS WASHER MARKED LS 1086 NAILED TO THE LOWER FACE.

CENTER ONE-QUARTER CORNER SECTION 4 TOWNSHIP 35 SOUTH RANGE 1 EAST. I MOVED MONUMENT SET ON SURVEY NUMBER 12768 N89°32'28"W, 0.35 FEET TO THE INTERSECTION OF THE NORTH-SOUTH CENTERLINE AND EAST-WEST CENTERLINE OF SECTION 4. SAID MONUMENT BEING A 5/8 BY 30 INCH IRON PIN WITH A 2 INCH ALUMINUM CAP EXPOSED 10 INCHES MARKED:

S4 T35S R1E
C . 1/4
LS 1086

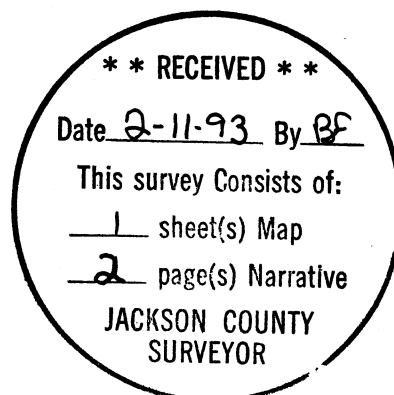
FROM WHICH:

A 5 INCH DIAMETER OAK BEARS S63° 51'E 24.0 FEET MARKED C1/484 IN UPPER FACE, BT IN LOWER FACE.

A 6 INCH DIAMETER OAK BEARS N37° 07'W 23.6 FEET MARKED C1/484 IN UPPER FACE, BT IN LOWER FACE.

A 4 INCH DIAMETER OAK BEARS N9° 48'E 18.4 FEET MARKED C1/484 IN UPPER FACE, BT IN LOWER FACE.

A 4 INCH DIAMETER OAK BEARS N89° 59'W 16.4 FEET MARKED C1/484 IN UPPER FACE, BT IN LOWER FACE.



REGISTRATION EXPIRES 31 DEC 1994

TAX LOT #35-1E-00800