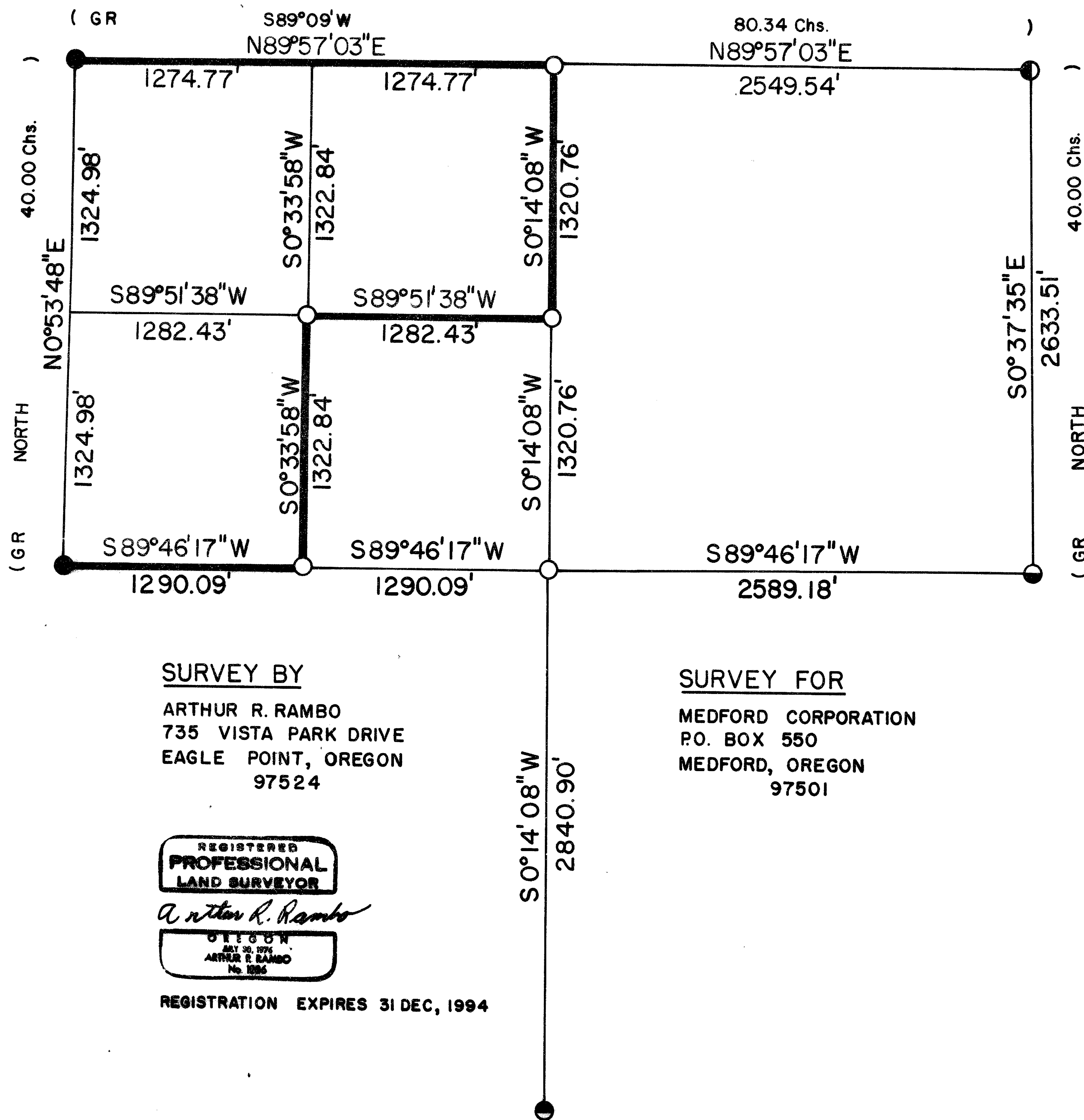


# S23 T32S R1E W.M.



**SURVEY BY**  
 ARTHUR R. RAMBO  
 735 VISTA PARK DRIVE  
 EAGLE POINT, OREGON  
 97524



REGISTRATION EXPIRES 31 DEC, 1994

**SURVEY FOR**  
 MEDFORD CORPORATION  
 P.O. BOX 550  
 MEDFORD, OREGON  
 97501

## CERTIFICATE OF SURVEY

I, ARTHUR R. RAMBO, REGISTRATION No. 1086 REGISTERED PROFESSIONAL LAND SURVEYOR STATE OF OREGON, HEREBY CERTIFY THAT THIS MAP CORRECTLY REPRESENTS A SURVEY MADE BY ME OR UNDER MY DIRECTION IN CONFORMANCE WITH THE LAWS OF THE STATE OF OREGON.

## LEGEND

- FOUND B.L.M. MONUMENT, BRASS CAP
- FOUND COUNTY MONUMENT, BRASS CAP
- FOUND MONUMENT SET SURVEY No. 2534
- FOUND LEAD FILLED REDUCER, JACKSON COUNTY
- SET 5/8" BY 30" REBAR WITH 2" ALUM. CAP
- GR GOVERNMENT CONTRACT No. 475
- LINE POSTED AND BLAZED THIS SURVEY

## SCALE

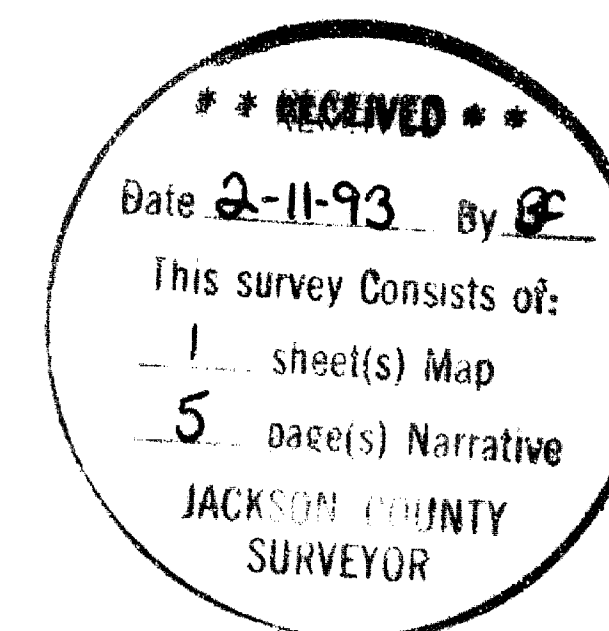
1" = 500'

## DATE

FEBRUARY 3, 1993

## BASIS OF BEARING

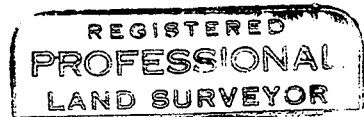
SOLAR OBSERVATION



## SURVEY NARRATIVE TO COMPLY WITH O.R.S. 209.250

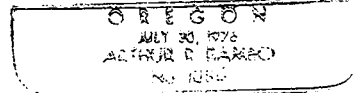
LOCATION: NORTHWEST QUARTER SECTION 23 TOWNSHIP 32  
SOUTH RANGE 1 EAST WILLAMETTE MERIDIAN,  
JACKSON COUNTY, OREGON.

SURVEY FOR: MEDFORD CORPORATION  
P.O. BOX 550  
MEDFORD, OREGON 97501



*Arthur R. Rambo*

SURVEY BY: ARTHUR R. RAMBO LS1086  
735 VISTA PARK DRIVE  
EAGLE POINT, OREGON 97524



REGISTRATION  
EXPIRES  
31 DEC 1994

DATE: FEBRUARY 3, 1993

BASIS OF BEARING: SOLAR OBSERVATION

PURPOSE: TO MARK AND POST THE BOUNDARIES OF MEDFORD CORPORATION LAND IN THE NORTHWEST QUARTER OF SAID SECTION 23, AS SHOWN ON THE PLAT TO ACCOMPANY THIS NARRATIVE.

PROCEDURE: THE ORIGINAL SURVEY OF SECTION 23 WAS COMPLETED BY RUFUS S. MOORE UNDER CONTRACT # 475, DATED JULY 3, 1883. ALL THE EXTERIOR CORNERS TO SAID SECTION 23 EXCEPT FOR THE NORTH ONE QUARTER CORNER NEEDED FOR CONTROL OF THIS SURVEY WERE REESTABLISHED FROM ORIGINAL EVIDENCE OR PROPORTIONATE MEASUREMENT. NO ORIGINAL EVIDENCE OF THE NORTH ONE QUARTER CORNER COULD BE FOUND. A SEARCH IN THE FIELD REVEALED A 1 INCH O.D. PIPE, 10 INCHES BELOW GROUND LEVEL OF UNKNOWN ORIGIN AND A 3/2 INCH NIPER EXPOSED 11 INCHES SET ON JANUARY 1979 BY S.L.M. ADMINISTRATIVE QUALITY.

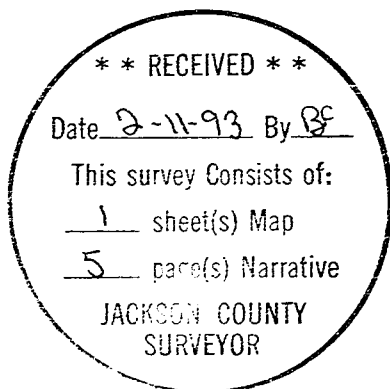
I RAN A TRAVERSE DOUBLE MEASURING ALL DISTANCES AND ANGLES TYING TO THE CORNERS NEEDED FOR CONTROL OF THIS SURVEY.

A PROPORTIONATE POSITION WAS CALCULATED FOR THE NORTH ONE QUARTER CORNER. ANOTHER SEARCH WAS MADE IN THE FIELD WITH NO ORIGINAL EVIDENCE BEING FOUND.

SUBDIVISION OF THE SECTION WAS CALCULATED. I RAN A CLOSED TRAVERSE OF THE INTERIOR LINES NEEDED BEGINNING AND ENDING ON THE EXTERIOR TRAVERSE OF SAID SECTION.

CORNERS FOUND AND ACCEPTED FOR CONTROL

ALL MEASUREMENTS TO BEARING TREES ARE TO THE CENTER OF THE TREE AT THE BASE UNLESS STATED OTHERWISE.



PAGE 2

ONE-QUARTER CORNER COMMON TO SECTIONS 23 AND 24 TOWNSHIP 32 SOUTH RANGE 3 EAST. AT THE CORNER LOCATION I FOUND A JACKSON COUNTY MONUMENT IN A MOUND OF STONE, EXPOSED 4 INCHES MARKED:

T32S R1E  
1/4S  
23 . 24  
CS  
1990

FROM WHICH:

A 14 1/2 INCH DIAMETER FIR BEARS N45° 20'W, 24.3 FEET WITH AN UPPER FACE SCRIBED CS, AND A LOWER FACE UNOPENED.

A 9 INCH DIAMETER MADRONA BEARS N45° 20'W, 21.7 FEET WITH A ROTTED OUT UPPER FACE ONLY.

A 12 INCH DIAMETER MADRONA BEARS S25° 10'E, 4.8 FEET WITH A ROTTED OUT UPPER FACE ONLY.

A 12 1/2 INCH DIAMETER FIR BEARS S7° 03'W, 19.1 FEET WITH UPPER AND LOWER FACES WITH SOME SCRIBES VISIBLE.

ONE-QUARTER CORNER COMMON TO SECTION 23 AND 26 TOWNSHIP 32 SOUTH RANGE 3 EAST. AT THE CORNER LOCATION I FOUND A 2 1/2 INCH LEAD FILLED REDUCER ON A 1 1/4 INCH O.D. IRON PIPE EXPOSED 12 INCHES, MARKED:

1963  
T32S R1E  
23  
26  
PROP 1/4 COR  
RS 583

FROM WHICH:

A 16 1/2 INCH DIAMETER FIR BEARS S16° 56'W, 17.9 FEET WITH BOTH UPPER AND LOWER FACES UNOPENED.

A 11 1/2 INCH DIAMETER FIR BEARS N45° 35'E, 22.7 FEET WITH BOTH UPPER AND LOWER FACES UNOPENED.

ONE-QUARTER CORNER COMMON TO SECTIONS 22 AND 23 TOWNSHIP 32 SOUTH RANGE 3 EAST. AT THE CORNER LOCATION I FOUND A STANDARD BULLOCK BURIED TO GROUND LEVEL, MARKED:

BLM  
T32S R1E  
1/4  
S22 . S23  
1968

FROM WHICH:

A 14 1/2 INCH DIAMETER OAK BEARS S24° 34'E, 9.2 FEET WITH ONE OPEN ROTTED FACE.

A 9 INCH DIAMETER FIR BEARS S57° 10'W, 40.5 FEET WITH A LOWER FACE UNOPENED.

A 10 INCH DIAMETER FIR BEARS N30° 10'W, 5.6 FEET WITH SOME SCRIBES VISIBLE IN A LOWER FACE.

A 14 INCH DIAMETER FIR BEARS N55° 42'E, 39.4 FEET WITH A LOWER FACE UNOPENED.

PAGE 3

SECTION CORNER COMMON TO SECTIONS 14,13,23, AND 24 TOWNSHIP 32 SOUTH RANGE 1 EAST. AT THE CORNER LOCATION I FOUND A 2 1/2 INCH LEAD FILLED REDUCER ON A 1 1/4 INCH O.D. IRON PIPE 5 INCHES 5 INCHES EAST OF FENCE CORNER. FENCE RUNS SOUTH AND WEST. MONUMENT IS FACING SOUTH AND IS MARKED:

1950  
T32S R1E  
14 13  
---  
23 24  
SEC COR

FROM WHICH:

- A 14 INCH DIAMETER FIR STUMP BEARS N41° 21'W, 11.9 FEET WITH A CHOPPED LOWER FACE, NO SCRIBES VISIBLE.
- A 16 INCH DIAMETER FIR STUMP BEARS S32° 18'W, 21.7 FEET WITH A LOWER FACE UNOPENED.
- A 21 INCH DIAMETER FIR BEARS N68° 28'E, 52.9 FEET WITH UPPER AND LOWER FACE UNOPENED.
- AN 12 INCH DIAMETER FIR BEARS N58°43'W, 13.8 FEET WITH AN UNOPENED LOWER FACE. REFERENCE TREE FROM BUREAU OF LAND MANAGEMENT PRELIMINARY ADMINISTRATIVE SURVEY (JANUARY 1979).
- A 10 INCH DIAMETER FIR BEARS S74°13'E, 13.1 FEET WITH AN UNOPENED LOWER FACE. REFERENCE TREE FROM BUREAU OF LAND MANAGEMENT PRELIMINARY ADMINISTRATIVE SURVEY (JANUARY 1979).

SECTION CORNER COMMON TO SECTIONS 15,14,22, AND 23 TOWNSHIP 32 SOUTH RANGE 1 EAST. AT THE CORNER LOCATION I FOUND A STANDARD S.L.M. MONUMENT, LEANING NORTH WEST, AT GROUND LEVEL WITH A 1 INCH IRON PIPE 4 INCHES TO THE SOUTH. MONUMENT MARKED:

T32S R1E  
S15 S14  
---  
S22 S23

1968

FROM WHICH:

- A 14 INCH DIAMETER OAK BEARS N56° 24'W, 11.4 FEET WITH A LOWER FACE ONLY UNOPENED.
- A 10 INCH DIAMETER OAK BEARS N78° 47'E, 16.4 FEET WITH A LOWER FACE ONLY UNOPENED.
- A 16 INCH DIAMETER FIR BEARS S65° 01'E, 19.2 FEET WITH A LOWER FACE ONLY UNOPENED. REFERENCE TREE FROM BUREAU OF LAND MANAGEMENT PRELIMINARY ADMINISTRATIVE SURVEY (JANUARY 1979).
- A 14 INCH DIAMETER FIR BEARS S39° 09'W, 42.6 FEET WITH A LOWER FACE ONLY UNOPENED. REFERENCE TREE FROM BUREAU OF LAND MANAGEMENT PRELIMINARY ADMINISTRATIVE SURVEY (JANUARY 1979).

CORNERS SET THIS SURVEY

ALL MEASUREMENTS TO BEARING TREES ARE TO THE CENTER OF TREE AT BASE UNLESS OTHERWISE STATED. BEARING TREES HAVE A BRASS WASHER MARKED LS1086 NAILED TO LOWER FACE.

CENTER ONE-QUARTER CORNER SECTION 23 TOWNSHIP 32 SOUTH RANGE 1 EAST. AT THE INTERSECTION OF THE NORTH-SOUTH CENTERLINE AND THE EAST-WEST CENTERLINE OF SECTION 23, I SET A 5/8 BY 30 INCH REBAR WITH A 2 INCH DIAMETER ALUM. CAP AT GROUND LEVEL. CAP IS MARKED:

T325 R1E  
S23  
CN . 1/4  
LS1086

## FROM WHICH:

AN 8 INCH DIAMETER OAK BEARS N39° 40'E, 83.0 FEET MARKED C1/4S23 IN UPPER FACE, BT IN LOWER FACE.

A 9 1/2 INCH DIAMETER ALDER BEARS N39° 51'W, 205.2 FEET MARKED C1/4S23 IN UPPER FACE, BT IN LOWER FACE.

AN 8 INCH DIAMETER OAK BEARS S14° 50'W, 183.6 FEET MARKED C1/4S23 IN UPPER FACE, BT IN LOWER FACE.

A 7 INCH DIAMETER MAPLE BEARS S18° 16'E, 88.7 FEET MARKED C1/4S23 IN UPPER FACE, BT IN LOWER FACE.

A 5/8 INCH REBAR BEARS EAST, 2 INCHES.

CENTER NORTH ONE-SIXTEENTH CORNER SECTION 23 TOWNSHIP 32 SOUTH RANGE 1 EAST. AT THE CORNER LOCATION I SET A 5/8 BY 30 INCH REBAR EXPOSED 1 1/2 INCHES WITH A 2 INCH DIAMETER ALUM. CAP MARKED:

T325 R1E  
S23  
CN . 1/16  
LS1086

## FROM WHICH:

A 10 INCH DIAMETER OAK BEARS N61° 40'E, 20.7 FEET MARKED CN1/16S23 IN UPPER FACE, BT IN LOWER FACE.

A 6 INCH DIAMETER FIR BEARS N19° 10'W, 25.8 FEET MARKED CN1/16S23 IN UPPER FACE, BT IN LOWER FACE.

A 5/8 INCH REBAR BEARS SOUTH, 29.5 INCHES

A FENCE CORNER BEARS APPROXIMATELY SOUTH, 42 INCHES.

CENTER WEST ONE-SIXTEENTH SECTION 23 TOWNSHIP 32 SOUTH RANGE 1 EAST. AT THE CORNER LOCATION I SET A 5/8 BY 30 INCH REBAR EXPOSED 6 INCHES WITH A 2 INCH DIAMETER ALUM. CAP MARKED:

S23  
CN . 1/16  
LS1086

PAGE 5

FROM WHICH:

A 6 INCH DIAMETER FIR BEARS N47° 47'E, 57.7 FEET MARKED CW1/16S23 IN UPPER FACE, BT IN LOWER FACE.

A 15 INCH DIAMETER FIR BEARS N36° 25'E, 15.9 FEET MARKED CW1/16S23 IN UPPER FACE, BT IN LOWER FACE.

NORTH ONE-QUARTER CORNER COMMON TO SECTIONS 23 AND 14 TOWNSHIP 32 SOUTH RANGE 1 EAST, AT THE CORNER LOCATION I SET A 5/8 BY 30 INCH REBAR EXPOSED 15 INCHES WITH A 2 INCH DIAMETER ALUM. CAP MARKED:

T32S R1E  
S14

323  
LS1086

FROM WHICH:

A 16 INCH DIAMETER MADRONA BEARS N51° 08'E, 21.7 FEET MARKED 1/4S14 IN UPPER FACE, BT IN LOWER FACE.

AN 8 INCH DIAMETER FIR BEARS N14° 06'W, 27.4 FEET MARKED 1/4S14 IN UPPER FACE, BT IN LOWER FACE.

A 6 INCH DIAMETER OAK BEARS S46° 41'W, 31.8 FEET MARKED 1/4S23 IN UPPER FACE, BT IN LOWER FACE.

A 13 1/2 INCH DIAMETER MADRONA BEARS S34° 09'E, 33.4 FEET MARKED 1/4S23 IN UPPER FACE, BT IN LOWER FACE.

A 5/8 INCH REBAR EXPOSED 11 INCHES BEARS N77° 57'E, 3.5 FEET.

A 1 INCH C.I. PIPE 10 INCHES BELOW GROUND LEVEL BEARS N88° 57'E, 3.1 FEET.

NORTH WEST ONE-SIXTEENTH CORNER SECTION 23 TOWNSHIP 32 SOUTH RANGE 1 EAST, AT THE CORNER LOCATION I SET A 5/8 BY 30 INCH REBAR EXPOSED 10 INCHES IN A MOUND OF STONE WITH A 2 INCH DIAMETER ALUM. CAP MARKED:

T32S R1E  
S23  
NW 1/16  
LS1086

FROM WHICH:

A 19 INCH DIAMETER CEDAR BEARS S7° 08'E, 3.4 FEET MARKED NW1/16S23 IN UPPER FACE, BT IN LOWER FACE.

AN 18 INCH DIAMETER CEDAR BEARS N19° 27'W, 27.6 FEET MARKED NW1/16S23 IN UPPER FACE, BT IN LOWER FACE.