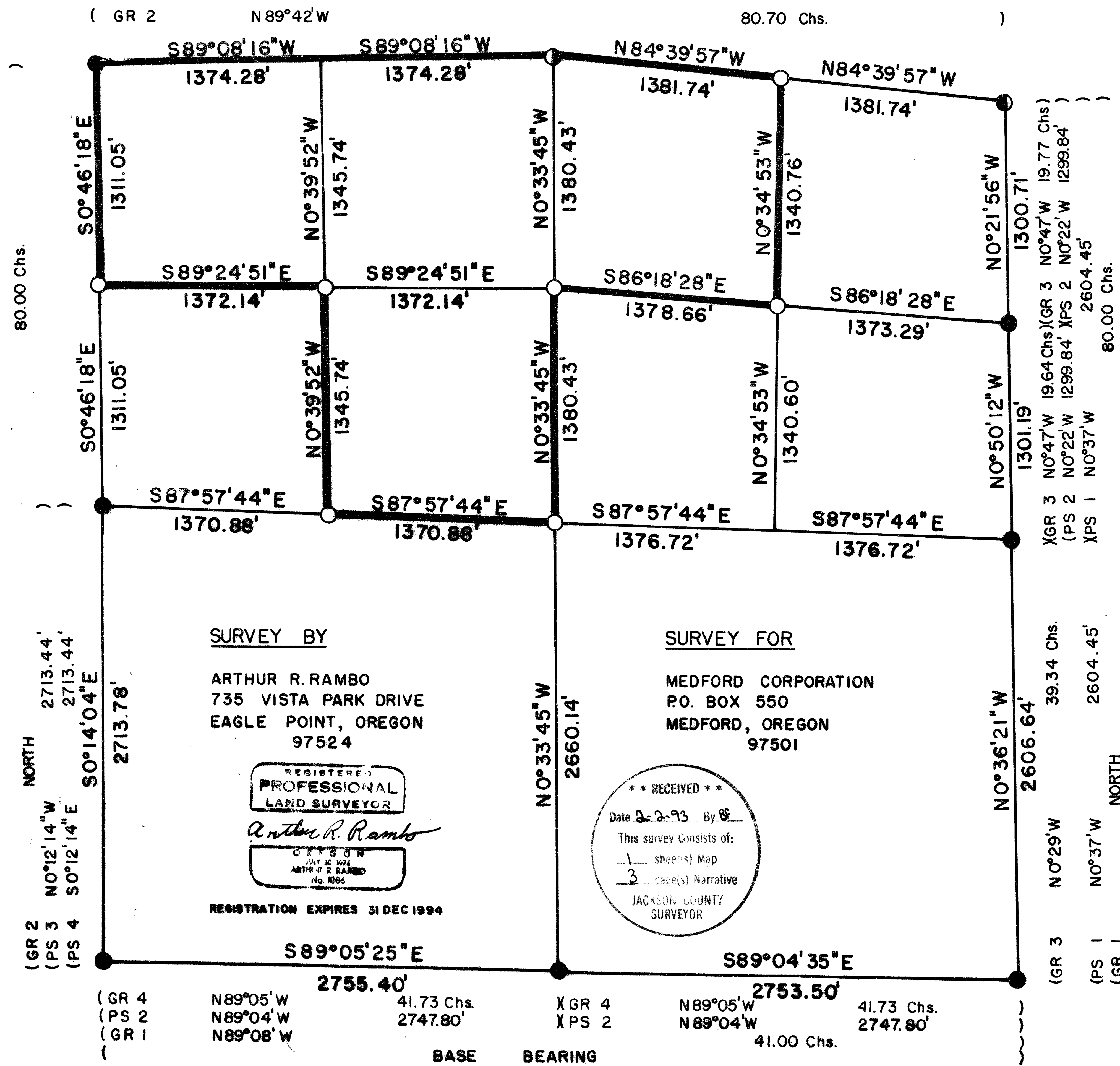


S24 T34S R3W W.M.



CERTIFICATE OF SURVEY

I, ARTHUR R. RAMBO, REGISTRATION No. 1086 REGISTERED PROFESSIONAL LAND SURVEYOR STATE OF OREGON, HEREBY CERTIFY THAT THIS MAP CORRECTLY REPRESENTS A SURVEY MADE BY ME OR UNDER MY DIRECTION IN CONFORMANCE WITH THE LAWS OF THE STATE OF OREGON.

LEGEND

- FOUND B.L.M. MONUMENT, BRASS CAP WITH B.T.'S
- ⊙ FOUND COUNTY MONUMENT, BRASS CAP WITH B.T.'S
- ⊙ FOUND MONUMENT SET SURVEY No. 4977, 5/8" IRON PIN
- SET 5/8" BY 30" REBAR WITH 2" ALUM. CAP
- GR 1 GOVERNMENT CONTRACT No. 39
- GR 2 GOVERNMENT CONTRACT No. 504
- GR 3 GOVERNMENT GROUP No. 887
- GR 4 GOVERNMENT GROUP No. 1225
- PS 1 PRIVATE SURVEY No. 4197
- PS 2 PRIVATE SURVEY No. 4977
- PS 3 PRIVATE SURVEY No. 5743
- PS 4 PRIVATE SURVEY No. 6836
- LINE POSTED AND BLAZED THIS SURVEY

SCALE

1" = 500'

DATE

FEB. 2, 1993

BASIS OF SURVEY

GOVERNMENT GROUP No. 1225

SURVEY BY

ARTHUR R. RAMBO
735 VISTA PARK DRIVE
EAGLE POINT, OREGON
97524

REGISTERED
PROFESSIONAL
LAND SURVEYOR

Arthur R. Rambo

OREGON
JAN 10 1994
ARTHUR R. RAMBO
No. 1086

REGISTRATION EXPIRES 31 DEC 1994

SURVEY FOR

MEDFORD CORPORATION
P.O. BOX 550
MEDFORD, OREGON
97501

** RECEIVED **

Date 2-2-93 By [Signature]

This survey consists of:

1 sheet(s) Map
3 page(s) Narrative

JACKSON COUNTY
SURVEYOR

13339

SURVEY NARRATIVE TO COMPLY WITH O.R.S. 209.250

LOCATION: NORTH HALF OF SECTION 24, TOWNSHIP 34 SOUTH,
RANGE 3 WEST, WILLAMETTE MERIDIAN, JACKSON
COUNTY, OREGON.

SURVEY FOR: MEDFORD CORPORATION
P.O. BOX 550
MEDFORD OR 97501

SURVEY BY: ARTHUR R. RAMBO PLS 1086
735 VISTA PARK DRIVE
EAGLE POINT OR 97501

DATE: FEBRUARY 2, 1993

BASIS OF BEARING: U. S. GOVERNMENT RESURVEY OF THE SOUTH LINE
OF SAID SECTION 24 (GROUP NUMBER 1225).

PURPOSE: TO MARK AND POST THE LANDS OF MEDFORD CORPORATION
IN SAID SECTION 24, AS SHOWN ON THE PLAT TO
ACCOMPANY THIS NARRATIVE.

PROCEDURE: A SEARCH OF RECORDS REVEALED THAT THE ORIGINAL
CORNERS FOR SECTION 24 HAVE ALL BEEN REESTABLISHED
FROM ORIGINAL EVIDENCE OR BY PROPORTIONATE
MEASUREMENT. I RAN A RANDOM LINE TRAVERSE AROUND
SAID SECTION 24, TIEING TO EXISTING CORNERS. UTILIZING
THESE CORNERS I COMPUTED THE SUBDIVISION OF SAID
SECTION 24 AND SET MONUMENTS AND MARKED LINES AS SHOWN
ON THE PLAT TO ACCOMPANY THIS NARRATIVE.

MONUMENTS RELIANT SURVEY:

ALL MEASUREMENTS TO TREES ARE TO THE CENTER OF TREE AT BASE UNLESS
OTHERWISE STATED. ALL TREES MARKED THIS SURVEY HAVE A BRASS WASHER
(MARKED LS 1086) NAILED TO LOWER FACE.

AT THE EAST ONE-SIXTEENTH CORNER COMMON TO SECTIONS 13
AND 24 TOWNSHIP 34 SOUTH RANGE 3 WEST I SET A 5/8 BY
30 INCH IRON PIN 27 INCHES IN THE GROUND, WITH A 2
INCH DIAMETER ALUMINUM CAP MARKED:

1348 R3W
S13
E + 1/16
S24
LS1086

FROM WHICH:

A 17 INCH DIAMETER MADRONA BEARS S47°26'W, 13.6 FEET
MARKED E1/16S24 IN UPPER FACE, BT IN LOWER FACE.

A 14 1/2 INCH DIAMETER OAK BEARS N49°27'E, 26.6 FEET
MARKED E1/16S13 IN UPPER FACE, BT IN LOWER FACE.

AT THE NORTH EAST ONE-SIXTEENTH CORNER SECTION 24
TOWNSHIP 34 SOUTH RANGE 3 WEST I SET A 5/8 BY 30 INCH
IRON PIN 26 INCHES IN THE GROUND, WITH A 2 INCH
ALUMINUM CAP MARKED:

T34S R3W
S24
NE + 1/16
LS1086

FROM WHICH:

AN 8 1/2 INCH DIAMETER OAK BEARS S77°02'W, 12.2 FEET
MARKED NE1/16S24 IN THE UPPER FACE, BT IN THE LOWER FACE.

A 5 INCH DIAMETER OAK BEARS N55°57'E, 8.6 FEET MARKED NE
1/16S24 IN THE UPPER FACE, BT IN THE LOWER FACE.

AT THE NORTH ONE-SIXTEENTH CORNER COMMON TO SECTIONS
23 AND 24 TOWNSHIP 34 SOUTH RANGE 3 WEST, I SET A 5/8
BY 30 INCH IRON PIN 22 INCHES IN THE GROUND, WITH A 2
INCH DIAMETER ALUMINUM CAP IN A MOUND OF STONE MARKED:

T34S R3W
N1/16
S23 + S24
LS1086

FROM WHICH:

A 7 INCH MADRONA BEARS N79°09'W, 22.3 FEET MARKED
N1/16S24 IN THE UPPER FACE, BT IN THE LOWER FACE.

A 6 1/2 INCH MADRONA BEARS S49°17'E, 11.1 FEET MARKED
N1/16S23 IN THE UPPER FACE, BT IN THE LOWER FACE.

AT THE NORTH WEST ONE-SIXTEENTH CORNER OF SECTION 24
TOWNSHIP 34 SOUTH RANGE 3 WEST I SET A 5/8 BY 30 INCH
IRON PIN 30 INCHES IN THE GROUND, WITH A 2 INCH
DIAMETER ALUMINUM CAP MARKED:

T34S R3W
S24
NW + 1/16
LS1086

FROM WHICH:

A 12 INCH DIAMETER MADRONA BEARS N42°47'W, 21.4 FEET
MARKED NW1/16S24 IN THE UPPER FACE, BT IN THE LOWER FACE.

AN 8 1/2 INCH DIAMETER MADRONA BEARS S14°21'E, 10.8 FEET
MARKED NW1/16S24 IN THE UPPER FACE, BT IN THE LOWER FACE.

AT THE CENTER WEST ONE-SIXTEENTH CORNER SECTION 24
TOWNSHIP 34S RANGE 3 WEST, I SET A 5/8 BY 30 INCH IRON
PIN 30 INCHES IN THE GROUND, WITH A 2 INCH DIAMETER
ALUMINUM CAP MARKED:

T34S R3W
S24
CW + 1/16
LS1086

FROM WHICH:

A 9 INCH DIAMETER MADRONA BEARS S88°12'E, 9.2 FEET MARKED
CW1/16S24 IN THE UPPER FACE, BT IN THE LOWER FACE.

A 6 1/2 INCH FIR BEARS S 06°33'W, 9.7 FEET MARKED
CW1/16S24 IN THE UPPER FACE, BT IN THE LOWER FACE.

13339

AT THE CENTER ONE-QUARTER CORNER SECTION 24 TOWNSHIP 34 SOUTH RANGE 3 WEST, I SET A 5/8 BY 30 INCH IRON PIN 24 INCHES IN THE GROUND, WITH A 2 INCH DIAMETER ALUMINUM CAP IN A MOUND OF STONE MARKED:

T34S R3W
S24
C + 1/4
LS1086

FROM WHICH:

A 10 1/2 INCH DIAMETER MADRONA BEARS N67°47'E, 4.6 FEET MARKED C1/4S24 IN THE UPPER FACE, BT IN THE LOWER FACE.

A 5 1/2 INCH DIAMETER CEDAR BEARS S16°17'E, 20.0 FEET MARKED C1/4S24 IN THE UPPER FACE, BT IN THE LOWER FACE.

A 4 1/2 INCH DIAMETER MADRONA BEARS S30°37'W, 20.5 FEET MARKED C1/4S24 IN THE UPPER FACE, BT IN THE LOWER FACE.

A 7 INCH DIAMETER MADRONA BEARS N33°27'W, 24.7 FEET MARKED C1/4S24 IN THE UPPER FACE, BT IN THE LOWER FACE.

AT THE CENTER NORTH ONE SIXTEENTH CORNER SECTION 24 TOWNSHIP 34 SOUTH RANGE 3 WEST, I SET A 5/8 BY 30 INCH IRON PIN 23 INCHES IN THE GROUND, WITH A 2 INCH DIAMETER ALUMINUM CAP MARKED:

T34S R3W
S24
CN + 1/16
LS1086

FROM WHICH:

A 10 INCH DIAMETER MADRONA BEARS N87°57'E, 30.8 FEET MARKED CN1/16S24 IN THE UPPER FACE, BT IN THE LOWER FACE.

A 10 1/2 INCH DIAMETER MADRONA BEARS N70°43'W, 18.8 FEET MARKED CN1/16S24 IN THE UPPER FACE, BT IN THE LOWER FACE.

REGISTERED
PROFESSIONAL
LAND SURVEYOR

Arthur R. Rambo

JACKSON
COUNTY
LAND SURVEYOR
No. 1086

REGISTRATION EXPIRES
DECEMBER 31, 1994

** RECEIVED **
Date 2-2-93 By BR
This survey consists of:
1 sheet(s) Map
3 page(s) Narrative
JACKSON COUNTY
SURVEYOR