

MARRATIVE

PURPOSE:

The purpose of this survey was to establish horizontal and vertical control for a OSHD Photogrammetric mapping project beginning at the intersection of Dutton Road and Carter Lake Highway and extending North Eastern along said Carter Lake Highway to the intersection of Linn Road and Carter Lake Highway. The project lies within Sections 34, 35, 36, 37 of Township 35 South and within Section 34 of Township 35 South, all within Range 1 West, Willamette Meridian in Jackson County, Oregon. DL-1, DL-2, DL-12, and DL-13 were established by GPS observations for the purpose of having base of bearing legs on each end of the terrestrial survey. All other traverse points were established by conventional terrestrial survey methods.

EQUIPMENT AND METHODS:

GPS sessions were done using three ASHTECH WD-XII dual code receivers. A minimum of two and one-half hours of simultaneous measurement data was collected with four satellites visible during each of four sessions. Base-line computations were processed on an IBM Model P70 386 portable computer using ASHTECH's "GPS" version 4.01, ASHTECH's "FILLNET" version 2.0, was used for performing all least squares adjustments on the GPS positions. OSHD's IBM program "ORSTRAY" was used to perform a compass adjustment on all terrestrial points. Oregon High Precision Network stations "PROS" and "ASH" were included in observations and their horizontal values were held fixed in the final FILLNET coordinate values which established NAD 83 (1911) geoid. Fixed vertical positions on "ASH", DL-2, & DL-12 were determined through conventional differential leveling methods. These vertical values were constrained in the final FILLNET adjustment. After final constrained adjustment, the precise baseline vector closure for GPS observed points was 1282.564 All Field terrestrial survey work was done using a WILD T-2000S Total Station with a Di-5 Electronic Distance Meter. Differential levels were done with a Zeiss NA-2000 level. The closure for the terrestrial survey between the bearing legs was 184.104. All field notes and pertinent survey data for the field survey work and GPS observations are stored in Mapping CD on the 91-002 in Photogrammetric Section, Room 25, ODOT Building in Salem, Oregon. Phone (503)318-6513.

I, Clifford P. Caldwell, being a Registered Land Surveyor in the State of Oregon, hereby certify that this plot and the information included herein, are a true and correct representation of an aerial mapping control survey conducted during May-July, 1991, by OSHD's photogrammetry survey crew of the request of Ron Busey, Section 3 Project Manager in accordance with the status of the State of Oregon.

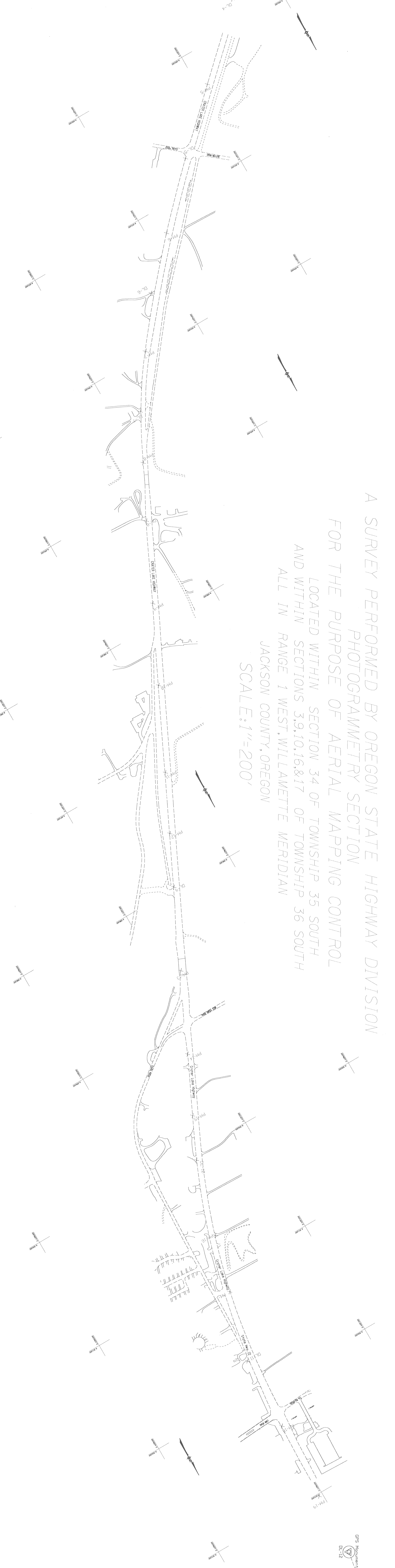


**OREGON STATE HIGHWAY DIVISION**  
**DUTTON ROAD - LINN ROAD**  
**CARTER LAKE HIGHWAY 62**  
 PHOTOGRAMMETRICALLY CONTROLLED  
 GENERAL PHOTO NUMBER: 91-002  
 PHOTO SCALE: 1" = 200'

TRANSVERSE CROSSINGS: 17th Street, 18th Street, 19th Street, 20th Street, 21st Street, 22nd Street, 23rd Street, 24th Street, 25th Street, 26th Street, 27th Street, 28th Street, 29th Street, 30th Street, 31st Street, 32nd Street, 33rd Street, 34th Street, 35th Street, 36th Street, 37th Street, 38th Street, 39th Street, 40th Street, 41st Street, 42nd Street, 43rd Street, 44th Street, 45th Street, 46th Street, 47th Street, 48th Street, 49th Street, 50th Street, 51st Street, 52nd Street, 53rd Street, 54th Street, 55th Street, 56th Street, 57th Street, 58th Street, 59th Street, 60th Street, 61st Street, 62nd Street, 63rd Street, 64th Street, 65th Street, 66th Street, 67th Street, 68th Street, 69th Street, 70th Street, 71st Street, 72nd Street, 73rd Street, 74th Street, 75th Street, 76th Street, 77th Street, 78th Street, 79th Street, 80th Street, 81st Street, 82nd Street, 83rd Street, 84th Street, 85th Street, 86th Street, 87th Street, 88th Street, 89th Street, 90th Street, 91st Street, 92nd Street, 93rd Street, 94th Street, 95th Street, 96th Street, 97th Street, 98th Street, 99th Street, 100th Street.

Therefore, only the original values are shown. Therefore, only the original values are shown.

POINT NUMBER	POINT TYPE	COORDINATE SYSTEM	DATE	DESCRIPTION
DL-1	GPS MONUMENT	NAD 83	7/15/91	GPS MONUMENT
DL-2	GPS MONUMENT	NAD 83	7/15/91	GPS MONUMENT
DL-12	GPS MONUMENT	NAD 83	7/15/91	GPS MONUMENT
DL-13	GPS MONUMENT	NAD 83	7/15/91	GPS MONUMENT
PH-1	TRAVELER	NAD 83	7/15/91	TRAVELER
PH-2	TRAVELER	NAD 83	7/15/91	TRAVELER
PH-3	TRAVELER	NAD 83	7/15/91	TRAVELER
PH-4	TRAVELER	NAD 83	7/15/91	TRAVELER
PH-5	TRAVELER	NAD 83	7/15/91	TRAVELER
PH-6	TRAVELER	NAD 83	7/15/91	TRAVELER
PH-7	TRAVELER	NAD 83	7/15/91	TRAVELER
PH-8	TRAVELER	NAD 83	7/15/91	TRAVELER
PH-9	TRAVELER	NAD 83	7/15/91	TRAVELER
PH-10	TRAVELER	NAD 83	7/15/91	TRAVELER
PH-11	TRAVELER	NAD 83	7/15/91	TRAVELER
PH-12	TRAVELER	NAD 83	7/15/91	TRAVELER
PH-13	TRAVELER	NAD 83	7/15/91	TRAVELER
PH-14	TRAVELER	NAD 83	7/15/91	TRAVELER
PH-15	TRAVELER	NAD 83	7/15/91	TRAVELER
PH-16	TRAVELER	NAD 83	7/15/91	TRAVELER
PH-17	TRAVELER	NAD 83	7/15/91	TRAVELER
PH-18	TRAVELER	NAD 83	7/15/91	TRAVELER
PH-19	TRAVELER	NAD 83	7/15/91	TRAVELER



A SURVEY PERFORMED BY OREGON STATE HIGHWAY DIVISION  
 PHOTOGRAMMETRY SECTION  
 FOR THE PURPOSE OF AERIAL MAPPING CONTROL  
 LOCATED WITHIN SECTION 34 OF TOWNSHIP 35 SOUTH  
 AND WITHIN SECTIONS 3, 9, 10, 16, & 17 OF TOWNSHIP 36 SOUTH  
 ALL IN RANGE 1 WEST, WILLAMETTE MERIDIAN  
 JACKSON COUNTY, OREGON  
 SCALE: 1" = 200'

