

12788

91-30660

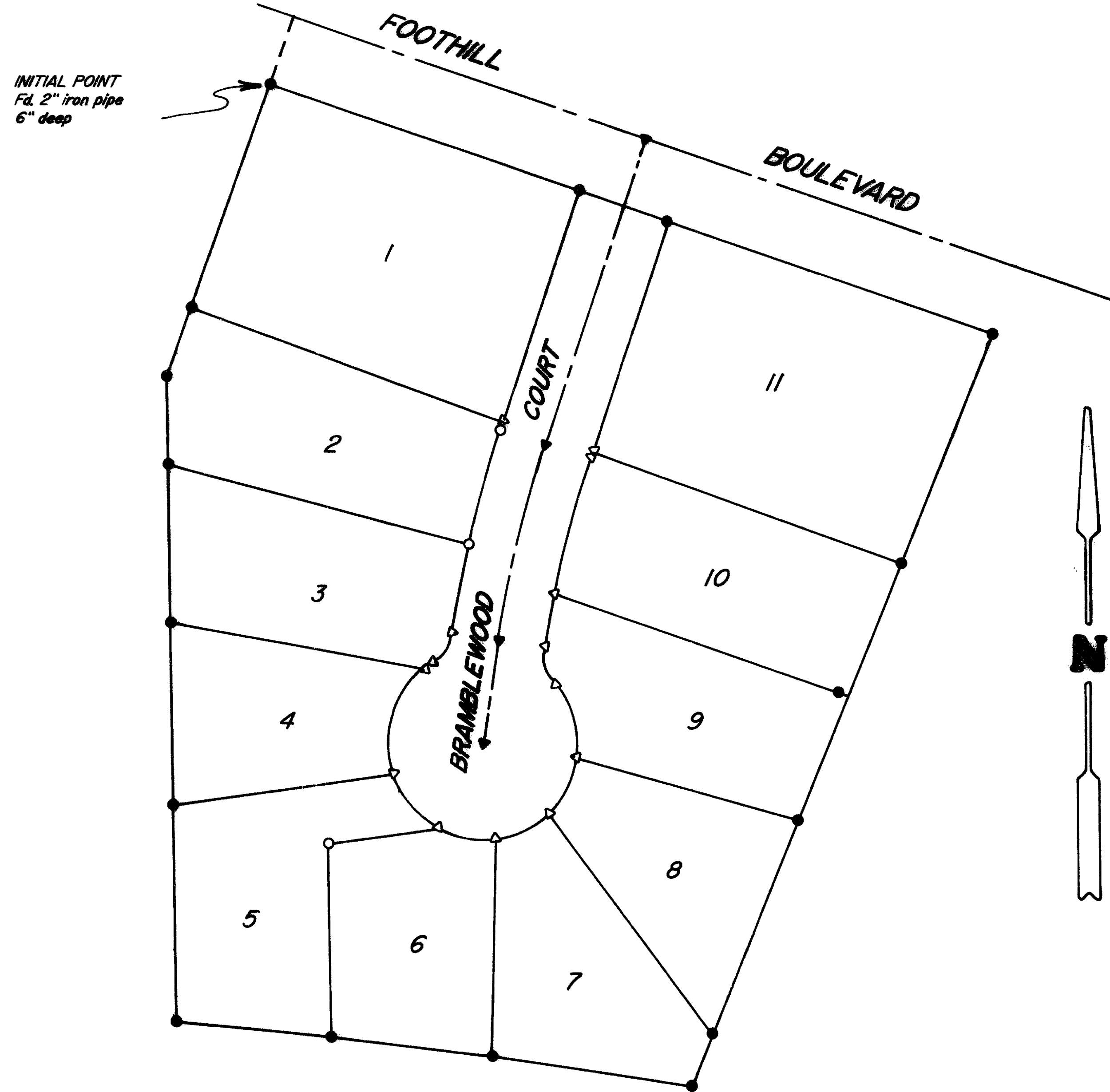
91-30660

AUSTIN SUBDIVISION

POSTMONUMENTATION MAP

LOCATED in the SE 1/4 of Section 16, T.36S., R.4W., W.M.
City of Rogue River, Jackson County, Oregon.
December 3, 1991

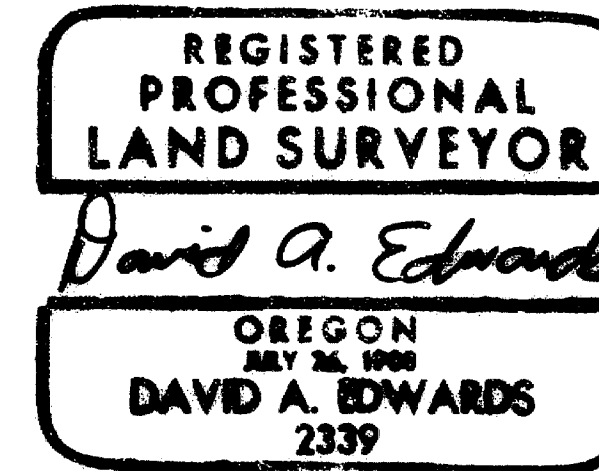
Edwards Surveying and Land Planning Inc.
823 W. 8th Street
Medford, Oregon 97501
Phone: (503) 776-2313



LEGEND

- Fd. 5/8" diam. steel pin w/plastic cap per plat of AUSTIN SUBDIVISION.
- Set 5/8" x 24" steel pin w/plastic cap mkd. "D.A. EDWARDS-LS 2339".
- ▲ Set 5/8" x 30" steel pin w/1 1/2" diam. alum. cap mkd. "L.S. 2339" unless noted.
- △ Set tack in lead plug in concrete w/brass tag mkd. "L.S. 2339".

SCALE: 1" = 60'



I, David A. Edwards, a duly registered surveyor of the State of Oregon, do hereby certify that this map represents a survey made by me or under my direction, and that the monuments conform to requirements of O.R.S. 92-060 and to the locations as shown on the original plat of Austin Subdivision, unless otherwise noted.

NOTE: See plat of AUSTIN SUBDIVISION, filed for record the 28th day of January, 1991 at 11:19 A.M. and recorded in Volume 16 of plats on page 98 of records at Jackson County, Oregon, for lot bearings and distances.

Filed for record this 13th day of December, 1991 at
1:25 o'clock 2 .M. and recorded in the Official Records of
Jackson County, Oregon.

Kathleen S. Beckett
County Clerk

Sanne Vitale
Deputy

Examined and Approved this 13 day of
December, 1991.

David A. Edwards
County Surveyor

Jackson County, Oregon
Recorded
OFFICIAL RECORDS

1:25 DEC 13 1991 P.M.

KATHLEEN S. BECKETT
CLERK and RECORDER
By Sanne Vitale Deputy

12788