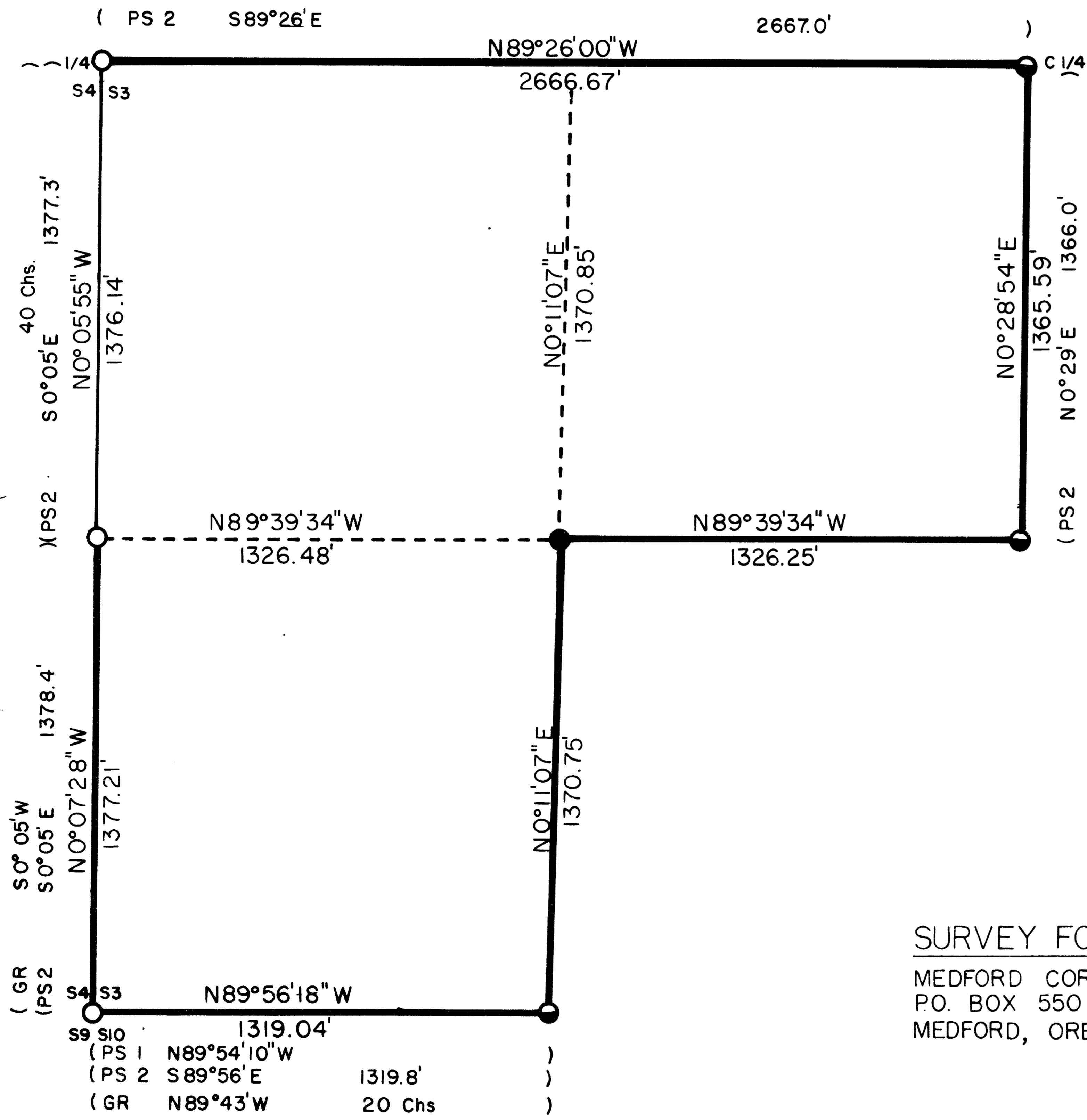
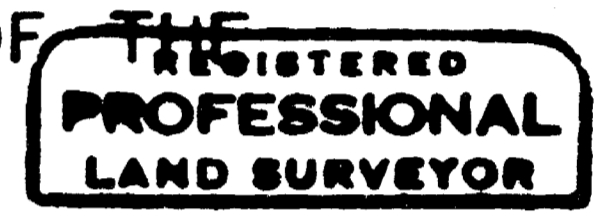


SW 1/4 S3 T33S R2E W.M.

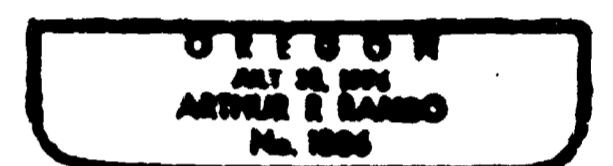


CERTIFICATE OF SURVEY

I, ARTHUR R. RAMBO, REGISTRATION No. 1086 REGISTERED PROFESSIONAL LAND SURVEYOR STATE OF OREGON, HEREBY CERTIFY THAT THIS MAP CORRECTLY REPRESENTS A SURVEY MADE BY ME OR UNDER MY DIRECTION IN CONFORMANCE WITH THE LAWS OF THE STATE OF OREGON.



Arthur R. Rambo



LEGEND

- FOUND COUNTY MONUMENT
- FOUND MONUMENT SET SURVEY No. 4718
- SET 5/8" BY 30" REBAR WITH 2" ALUM. CAP
- GR 1870 GOVERNMENT RECORD
- PS 1 PRIVATE SURVEY No. 1098
- PS 2 PRIVATE SURVEY No. 4718
- LINE POSTED AND BLAZED THIS SURVEY

SCALE

1" = 300'

BASIS OF BEARING

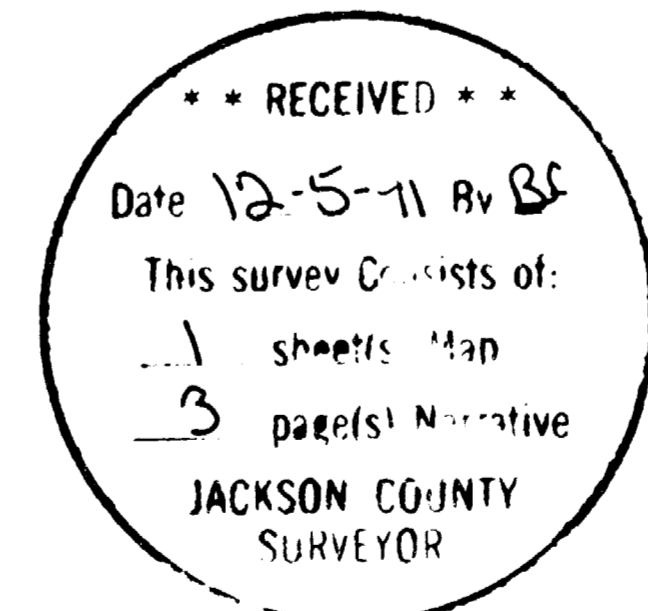
SURVEY No. 4718

DATE

NOVEMBER 18, 1991

SURVEY BY

ARTHUR R. RAMBO
735 VISTA PARK DRIVE
EAGLE POINT, OREGON 97524



SURVEY FOR
MEDFORD CORPORATION
P.O. BOX 550
MEDFORD, OREGON 97501



A 27 1/2 INCH DIAMETER CEDAR BEARS S9 28'W 29.7 FEET WITH UNOPENED FACE.

AN 11 INCH DIAMETER OAK BEARS S73 33'E 34.5 FEET WITH UNOPENED UPPER AND LOWER FACE.

SOUTH ONE-SIXTEEN CORNER COMMON TO SECTION 3 AND 4 TOWNSHIP 33 SOUTH RANGE 2 EAST. AT THE CORNER LOCATION I FOUND A 3/4 INCH IRON PIPE BENT TO THE EAST, 2 INCHES BELOW GROUND SURFACE

FROM WHICH:

AN 18 INCH DIAMETER ROTTED FIR STUMP BEARS N31 54'E 6.2 FEET WITH BT VISIBLE IN OPEN FACE.

A 14 INCH DIAMETER FIR STUMP CUT OFF AT GROUND LEVEL BEARS N39 10'W 33.9 FEET.

I MARK TWO NEW TREES WITH BRASS WASHER MARKED LS 1086 NAILED TO LOWER FACE.

AN 8 1/2 INCH DIAMETER FIR BEARS N14 58'E 18.4 FEET MARKED S1/16S3 IN UPPER FACE, BT IN LOWER FACE.

A 9 INCH DIAMETER FIR BEARS S52 23'W 12.0 FEET MARKED S1/16S4 IN UPPER FACE, BT IN LOWER FACE.

ONE-QUARTER CORNER COMMON TO SECTION 3 AND 4 TOWNSHIP 33 SOUTH RANGE 2 EAST. AT THE CORNER LOCATION I FOUND A 1 1/2 INCH DIAMETER IRON PIPE, IN A MOUND OF STONE, EXPOSED 7 INCHES.

FROM WHICH:

A 22 INCH DIAMETER FIR BEARS S43 31'W 16.5 FEET WITH UNOPENED UPPER AND LOWER FACE.

A 7 INCH DIAMETER OAK BEARS N5 57'E 68.6 FEET WITH UNOPENED UPPER AND LOWER FACE.

CORNERS SET THIS SURVEY

ALL MEASUREMENTS TO BEARING TREES ARE TO THE CENTER OF TREE AT THE BASE UNLESS OTHERWISE STATED. ALL BEARING TREES HAVE A BRASS WASHER, STAMPED LS 1086, NAILED TO THE LOWER FACE.

SOUTHWEST ONE-SIXTEENTH CORNER SECTION 3 TOWNSHIP 33 SOUTH RANGE 2 EAST. AT THE CORNER LOCATION I SET A 2 INCH DIAMETER ALUM. DISC ON A 5/8 BY 30 INCH REBAR, IN A MOUND OF STONE, EXPOSED 8 INCHES MARKED:

S3 T33S R2E

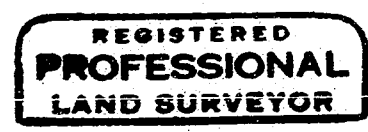
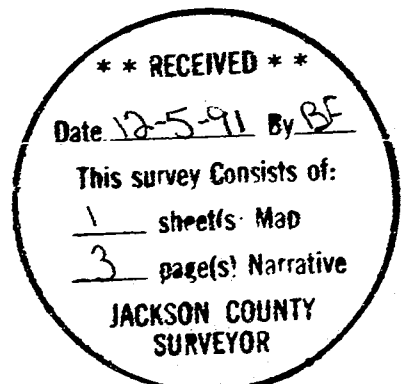
SW . 1/16

LS 1086

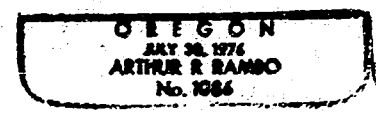
FROM WHICH:

A 7 INCH DIAMETER FIR BEARS N89 58'W 28.1 FEET MARKED SW1/16S3 IN UPPER FACE, BT IN LOWER FACE.

A 6 INCH DIAMETER FIR BEARS S30 00'E 25.7 FEET MARKED SW1/16S3 IN UPPER FACE.



Arthur R. Rambo



PAGE 2

RE 7122
C 1/4SEC 3
T33S R2E
1971

FROM WHICH:

A 12 INCH DIAMETER OAK BEARS N66 13'W 78.3 FEET
WITH A PARTIALLY OPENED UPPER FACE AND AN UNOPENED
LOWER FACE.A 15.9 INCH DIAMETER PINE BEARS N34 08'E 74.0 FEET
WITH A PARTIALLY OPENED UPPER FACE AND AN UNOPENED
LOWER FACE.A 24.8 INCH DIAMETER FIR BEARS S50 11'E 78.0 FEET
WITH UNOPENED UPPER AND LOWER FACE.A 14 1/2 INCH DIAMETER PINE BEARS S79 18'W 82.2 FEET
WITH UNOPENED UPPER FACE AND PARTIALLY OPENED LOWER
FACE.CENTERSOUTH ONE-SIXTEENTH CORNER SECTION 3 TOWNSHIP 33 SOUTH
RANGE 2 EAST. AT THE CORNER LOCATION I FOUND A 2 1/2 INCH LEAD
FILLED PIPE REDUCER, 1 INCH BELOW GROUND SURFACE, MARKED:

CS 1/16

(OTHER MARKINGS DESTROYED)

FROM WHICH:

A 28 1/2 INCH DIAMETER FIR BEARS S38 07'W 77.7 FEET
WITH UNOPENED UPPER AND LOWER FACE.AN 1/2 INCH DIAMETER FIR BEARS S77. 42'E 106.9 FEET
WITH UNOPENED UPPER AND LOWER FACE.WEST ONE-SIXTEEN CORNER COMMON TO SECTION 3 AND 10 TOWNSHIP 33
SOUTH RANGE 2 EAST. AT THE CORNER LOCATION I FOUND A 2 1/2 INCH
LEAD FILLED PIPE REDUCER MARKED:W 1/16
3- . -
10
T33S R2E

FROM WHICH:

A 13 INCH DIAMETER FIR BEARS S65 08'W 35.2 FEET
WITH UNOPENED UPPER AND LOWER FACE.A 20 1/2 INCH DIAMETER CEDAR BEARS N29 53'W 69.1 FEET
WITH UNOPENED UPPER AND LOWER FACE.SECTION CORNER COMMON TO SECTION 3, 4, 9, AND 10 TOWNSHIP 33
SOUTH RANGE 2 EAST. AT THE CORNER LOCATION I FOUND A 2 1/2 INCH
BRONZE DISC ON A 1 INCH IRON PIPE, EXPOSED 8 INCHES, MARKED:T33S R2E
4 3
SEC 9 10 COR
C. S.
1971

FROM WHICH:

A 14 1/2 INCH DIAMETER OAK BEARS N83 15'E 57.6 FEET
WITH UNOPENED UPPER AND LOWER FACE.A 16 1/2 INCH DIAMETER OAK BEARS N73 54'W 12.9 FEET
WITH ROTTED UPPER OPEN FACE.

SURVEY NARRATIVE TO COMPLY WITH O.R.S. 209.250

LOCATION: SOUTHWEST QUARTER OF SECTION 3 TOWNSHIP 33
SOUTH RANGE 2 EAST WILLAMETTE MERIDIAN, JACKSON
COUNTY, OREGON.

SURVEY FOR: MEDFORD CORPORATION
P.O. BOX 550
MEDFORD, OREGON 97501

SURVEY BY: ARTHUR R. RAMBO LS1086
735 VISTA PARK DRIVE
EAGLE POINT, OREGON 97524

DATE: NOVEMBER 18, 1991

BASIS OF BEARING: SURVEY NUMBER 4718 (WEST HALF OF EAST-WEST
CENTERLINE)

PURPOSE: TO MARK AND POST THE BOUNDARIES OF MEDFORD
CORPORATION LAND IN THE SOUTHWEST QUARTER OF
SAID SECTION 3, AS SHOWN ON THE PLAT TO
ACCOMPANY THIS NARRATIVE.

PROCEDURE: THE ORIGINAL SURVEY OF SAID SECTION 3 WAS
COMPLETED BY TURNER AND HOWARD UNDER CONTRACT
#142, DATED SEPTEMBER 9, 1870. THE WEST 1/4
CORNER OF SAID SECTION 3 WAS RE-ESTABLISHED BY
C.Z. BOYDEN, BY PROPORTIONATE MEASUREMENT IN
1937. THE SOUTH 1/16 CORNER COMMON TO SECTION 3
AND 4 WAS ESTABLISHED BY C.Z. BOYDEN IN 1937.
SECTION 3 WAS SUBDIVIDED BY ROBERT ADAM MORRIS
UNDER SURVEY #4718, DATED DECEMBER 8, 1971.
I RAN A CLOSED TRAVERSE SURVEY BEGINNING AT THE
CENTER 1/4 CORNER, THEN TO THE CENTERSOUTH 1/16
CORNER, THEN TO THE TEMPORARY SOUTHWEST 1/16
CORNER, THEN TO THE WEST 1/16 CORNER COMMON TO
SECTION 3 AND 10, THEN TO THE SOUTHWEST SECTION
CORNER, THEN TO THE SOUTH 1/16 CORNER COMMON TO
SECTION 3 AND 4, THEN TO THE 1/4 CORNER COMMON TO
SECTION 3 AND 4, THEN CLOSING BACK TO THE CENTER
1/4 CORNER. I THEN CALCULATED THE POSITION FOR
THE SOUTHWEST 1/16 CORNER AT THE INTERSECTION OF
THE NORTH-SOUTH AND EAST-WEST CENTERLINE OF THE
SOUTHWEST QUARTER OF SAID SECTION 3. I THEN SET
THE SOUTHWEST 1/16 CORNER AND MARKED AND POSTED
THE BOUNDARIES AS SHOWN ON THE PLAT TO ACCOMPANY
THIS NARRATIVE.

CORNERS FOUND AND USED FOR CONTROL OF THIS SURVEY

ALL MEASUREMENTS TO BEARING TREES ARE TO THE CENTER OF THE
TREE AT THE BASE UNLESS OTHERWISE STATED.

CENTER ONE-QUARTER CORNER SECTION 3 TOWNSHIP 33 SOUTH RANGE 2 EAST.
AT THE CORNER LOCATION I FOUND A 1 1/2 INCH IRON PIPE WITH A 2 1/2
INCH LEAD FILLED REDUCER, EXPOSED 17 INCHES IN A MOUND OF STONE,
MARKED: