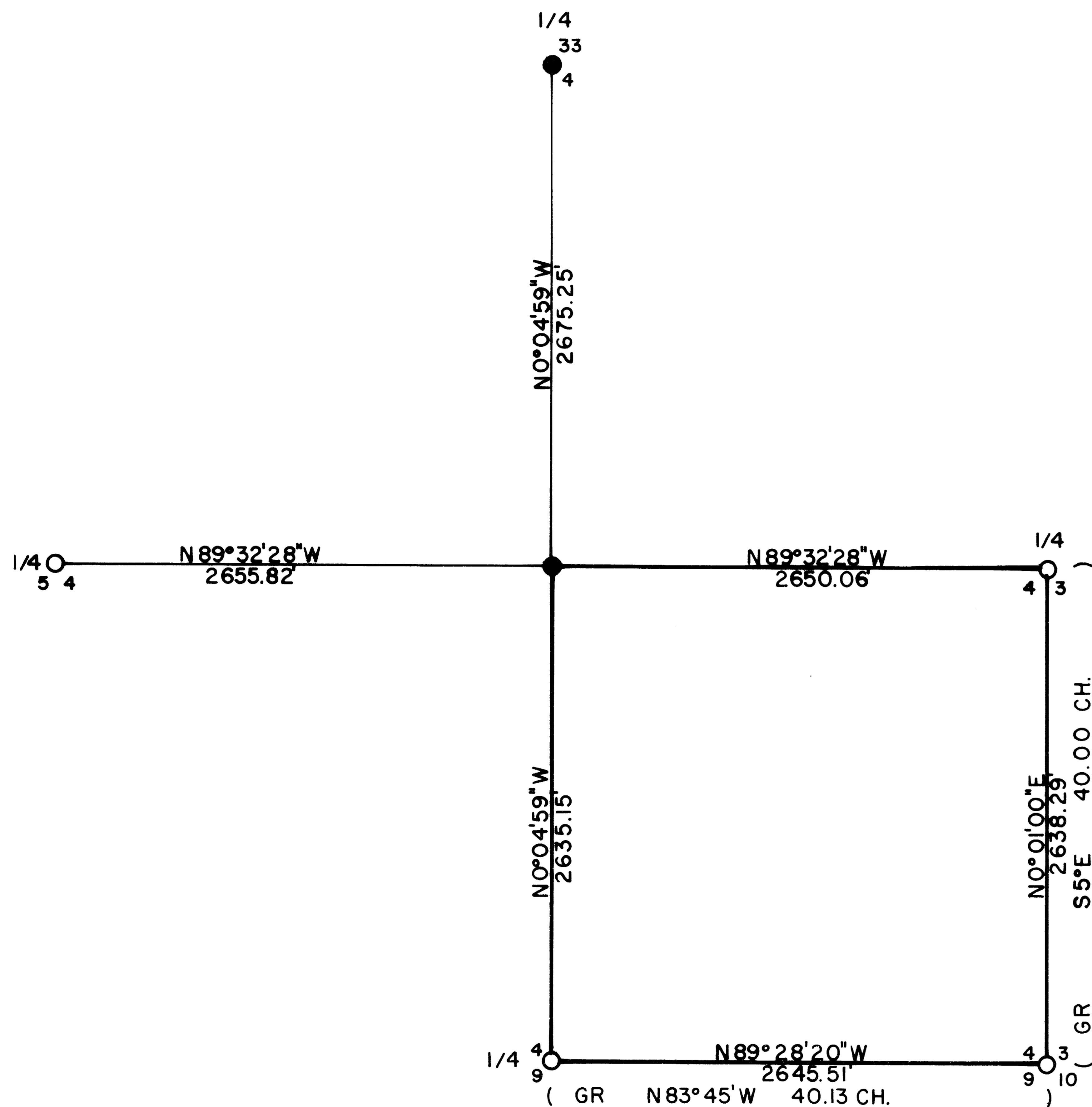


# SE 1/4 S4 T35S R1E

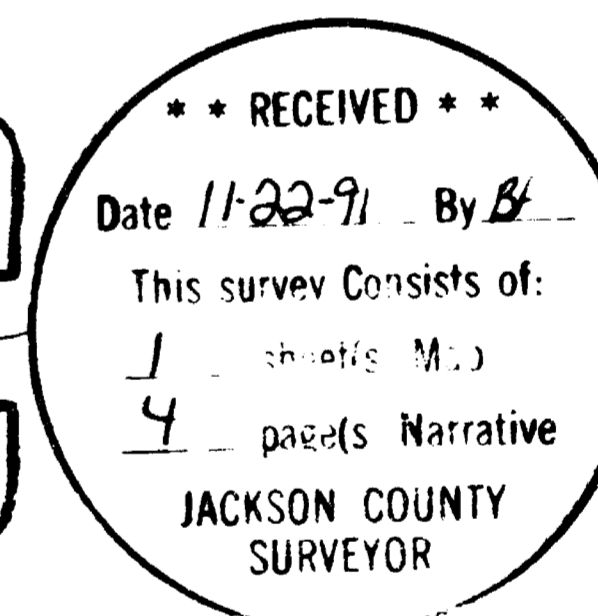
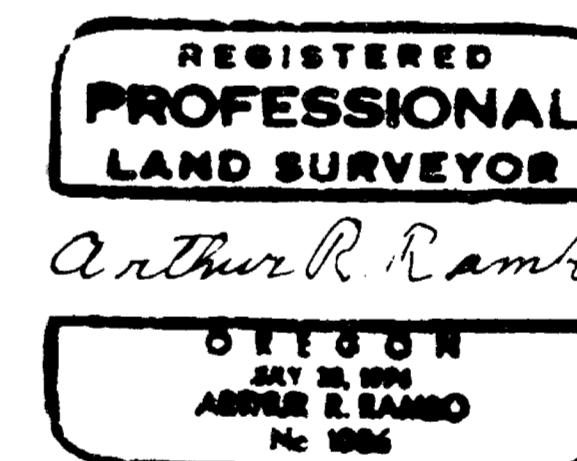


## CERTIFICATE OF SURVEY

I, ARTHUR R. RAMBO, REGISTRATION No. 1086  
 REGISTERED PROFESSIONAL LAND SURVEYOR  
 STATE OF OREGON, HEREBY CERTIFY THAT  
 THIS MAP CORRECTLY REPRESENTS A SURVEY  
 MADE BY ME OR UNDER MY DIRECTION IN  
 CONFORMANCE WITH THE LAWS OF THE  
 STATE OF OREGON.

## LEGEND

- FOUND COUNTY MONUMENT
- SET 5/8" BY 30" REBAR WITH 2" ALUM. CAP
- GR 1854 GOVERNMENT RECORD
- LINE POSTED AND BLAZED THIS SURVEY



## SCALE

1" = 500'

## BASIS OF BEARING

SURVEY No. 10465

## DATE

NOVEMBER 12, 1991

SURVEY BY  
 ARTHUR RAMBO  
 735 VISTA PARK DR.  
 EAGLE POINT OR 97524



12768

SURVEY NARRATIVE TO COMPLY WITH O.R.S. 209.250

LOCATION: SOUTHEAST QUARTER SECTION 4 TOWNSHIP 35 SOUTH  
RANGE 1 EAST WILLAMETTE MERIDIAN, JACKSON COUNTY,  
OREGON.

SURVEY FOR: MEDFORD CORPORATION  
P.O. BOX 550  
MEDFORD, OREGON 97501

SURVEY BY: ARTHUR R. RAMBO LS1086  
735 VISTA PARK DRIVE  
EAGLE POINT, OREGON 97524

DATE: NOVEMBER 12, 1991

BASIS OF BEARING: SURVEY NUMBER 10465

PURPOSE: TO MARK AND POST THE BOUNDARIES OF MEDFORD  
CORPORATION LAND IN THE SOUTHEAST QUARTER OF  
SAID SECTION 4, AS SHOWN ON THE PLAT TO ACCOMPANY  
THIS NARRATIVE.

PROCEDURE: THE ORIGINAL SURVEY OF SECTION 4 WAS COMPLETED  
BY IVES AND HYDE UNDER CONTRACT # 47, DATED  
AUGUST 18, 1854. THE ORIGINAL CORNERS NEEDED  
FOR CONTROL OF THIS SURVEY HAVE BEEN RE-  
ESTABLISHED FROM ORIGINAL EVIDENCE BY THE  
JACKSON COUNTY SURVEYOR. A SEARCH IN THE FIELD  
REVEALED THAT THE MONUMENT FOR THE QUARTER CORNER  
COMMON TO SECTION 33 TOWNSHIP 34 SOUTH RANGE  
1 EAST, AND SECTION 4 TOWNSHIP 35 SOUTH RANGE  
1 EAST IS GONE. THE BEARING TREES MARKED FOR THIS  
CORNER BY THE JACKSON COUNTY SURVEYOR ARE STILL  
STANDING AND IN GOOD SHAPE.

I RAN A CLOSED TRAVERSE SURVEY BEGINNING AT THE  
SOUTHEAST CORNER OF SAID SECTION 4, FROM SURVEY  
#10465, THEN TO THE SOUTH 1/4 CORNER, THEN TO  
THE WEST 1/4 CORNER, THEN TO THE NORTH 1/4  
CORNER, THEN TO THE EAST 1/4 CORNER, THEN CLOSING  
BACK TO THE SOUTHEAST SECTION CORNER. I THEN  
CALCULATED THE POSITION OF THE CENTER 1/4 CORNER  
AT THE INTERSECTION OF THE NORTH-SOUTH AND  
EAST-WEST CENTERLINE OF SAID SECTION 4. I THEN  
RAN A CLOSED TRAVERSE OF THE INTERIOR LINES  
NEEDED, BEGINNING AT THE SOUTH 1/4 CORNER THEN  
NORTH TO THE LOCATION FOR THE CENTER 1/4 CORNER  
THEN EAST CLOSING TO THE EAST 1/4 CORNER.

CORNERS FOUND AND ACCEPTED FOR CONTROL

ALL MEASUREMENTS TO BEARING TREES ARE TO THE CENTER OF  
THE TREE AT THE BASE UNLESS STATED OTHERWISE.

SECTION CORNER COMMON TO SECTION 3, 4, 9, AND 10 TOWNSHIP 35 SOUTH  
RANGE 1 EAST. AT THE CORNER LOCATION I FOUND A 2 1/2 INCH  
DIAMETER BRASS DISC, JACKSON COUNTY MONUMENT, IN A MOUND OF STONE  
MARKED:

T35S R1E  
 S4 S3  
 — . —  
 S9 S10  
 JACKSON COUNTY 1974

## FROM WHICH:

A 17 1/2 INCH DIAMETER OAK BEARS S37° 03' E 45.5 FEET WITH AN UNOPENED FACE.

A 12 1/2 INCH DIAMETER FIR BEARS S67° 17' W 18.2 FEET WITH UNOPENED UPPER AND LOWER FACES.

A 24 INCH DIAMETER PINE SNAG BEARS N47° 10' W 66.7 FEET MARKED CS IN UPPER FACE BT IN LOWER FACE.

A 10 1/2 INCH DIAMETER OAK BEARS N 24° 34' W 36.9 FEET WITH PARTIALLY OPENED UPPER FACE.

A 20 1/2 INCH DIAMETER MADRONA BEARS N31° 42' E 24.3 FEET MARKED CS IN UPPER FACE BT IN LOWER FACE.

A 12 1/2 INCH DIAMETER FIR SNAG BEARS S63° 35' E 33.0 FEET MARKED CS IN UPPER FACE BT IN LOWER FACE.

ONE-QUARTER CORNER COMMON TO SECTION 4 AND 9 TOWNSHIP 35 SOUTH RANGE 1 EAST. AT THE CORNER LOCATION I FOUND A 2 1/2 INCH DIAMETER BRASS DISC ON A 1 INCH DIAMETER IRON PIPE, IN A MOUND OF STONE, EXPOSED 8 INCHES MARKED:

T35S R1E  
 4  
 1/4 S — . —  
 9  
 CS  
 1987

## FROM WHICH:

A 28 INCH DIAMETER PINE BEARS N25° 37' E 77.6 FEET WITH ONE PARTIALLY OPENED FACE.

A 6 INCH DIAMETER CEDAR BEARS S36° 54' E 17.0 FEET MARKED CS IN UPPER FACE, BT IN LOWER FACE.

A 25 INCH DIAMETER OAK BEARS S10° 38' E 18.6 FEET WITH ONE PARTIALLY OPENED FACE.

ONE-QUARTER CORNER COMMON TO SECTION 4 AND 5 TOWNSHIP 35 SOUTH RANGE 1 EAST. AT THE CORNER LOCATION I FOUND A 2 1/2 INCH DIAMETER BRASS DISC, ON A 1 INCH DIAMETER IRON PIPE, EXPOSED 9 INCHES IN A MOUND OF STONE, MARKED:

T35S R1E  
 1/4 S  
 5 . 4  
 C S  
 1987

## FROM WHICH:

A 6 INCH DIAMETER FIR BEARS N48° 36' E 6.5 FEET WITH PARTIALLY HEALED UPPER AND LOWER FACE.

AN 8 INCH DIAMETER OAK BEARS N52° 14' E 27.0 FEET WITH A CHOPPED OUT AND ROTTED FACE.

A 6 1/2 INCH DIAMETER FIR BEARS N89° 08' W 18.9 FEET WITH PARTIALLY HEALED UPPER AND LOWER FACE.

ONE-QUARTER CORNER COMMON TO SECTION 3 AND 4 TOWNSHIP 35 SOUTH RANGE 1 EAST. AT THE CORNER LOCATION I FOUND A 2 1/2 INCH DIAMETER BRASS DISC, ON A 1 INCH DIAMETER IRON PIPE EXPOSED 9 INCHES, MARKED:

T35S R1E  
1/4 S  
4 . 3  
JACKSON COUNTY  
1974

FROM WHICH:

A 16 INCH DIAMETER OAK BEARS N53° 14'E 18.9 FEET FACE ROTTED OUT NO SCRIBE VISIBLE.

A 7 1/2 INCH DIAMETER OAK BEARS S30° 33'W 35.2 FEET WITH UNOPENED UPPER AND LOWER FACES.

A DOWN FIR SNAG BEARS S65° 08'E 79.7 FEET MARKED, CS IN UPPER FACE, BT IN LOWER FACE.

A 13 1/2 INCH DIAMETER HOLLOW OAK SNAG BEARS S72° 08'W 71.0 FEET WITH CHOPPED OUT UPPER AND LOWER FACES, NO SCRIBE VISIBLE.

ONE-QUARTER CORNER COMMON TO SECTION 33 TOWNSHIP 34 SOUTH RANGE 1 EAST AND SECTION 4 TOWNSHIP 35 SOUTH RANGE 1 EAST. AT THE CORNER LOCATION I FOUND THE MOUND OF STONE PER JACKSON COUNTY RECORDS OF RE-ESTABLISHMENT, THE 1 INCH IRON PIPE WITH BRONZE DISC WAS GONE. IN THE MOUND OF STONE I SET A 5/8 BY 30 INCH REBAR WITH A 2 INCH ALUM. CAP MARKED:

T34S R1E  
S33  
1/4 .  
S4  
T35S  
LS1086

FROM WHICH:

A 13 1/2 INCH DIAMETER OAK BEARS S41° 51'W 105.0 FEET WITH UNOPENED UPPER AND LOWER FACES.

A 10 1/2 DIAMETER OAK BEARS N60° 29'W 44.7 FEET WITH UNOPENED UPPER AND LOWER FACES.

AN INDETERMINATE SIZE ROTTED PINE STUMP BEARS S71° 12'W 26.9 FEET.

I TAKE TWO NEW BEARING TREES MARKED 1/454 IN UPPER FACE, BT WITH BRASS WASHER STAMPED LS 1086 IN LOWER FACE.

AN 11 1/2 INCH DIAMETER OAK BEARS S71° 47'E 404.3 FEET.

A 14 INCH DIAMETER OAK BEARS S53° 32'E 355.1 FEET.

CORNER SET THIS SURVEY

ALL MEASUREMENTS TO BEARING TREES ARE TO THE CENTER OF TREE AT BASE UNLESS OTHERWISE STATED. BEARING TREES HAVE A BRASS WASHER MARKED LS 1086 NAILED TO THE LOWER FACE.

CENTER ONE-QUARTER CORNER SECTION 4 TOWNSHIP 35 SOUTH RANGE 1 EAST. AT THE INTERSECTION OF THE NORTH-SOUTH CENTERLINE AND EAST-WEST CENTERLINE OF SECTION 4, I SET A 5/8 BY 30 INCH REBAR IN A MOUND OF STONE EXPOSED 10 INCHES WITH A 2 INCH DIAMETER ALUM. CAP MARKED:

S4 T35S R1E  
C . 1/4  
LS 1086

FROM WHICH:

A 5 INCH DIAMETER OAK BEARS S63° 29'E 23.7 FEET  
MARKED C1/4S4 IN UPPER FACE, BT IN LOWER FACE.

A 6 INCH DIAMETER OAK BEARS N37° 46'W 23.8 FEET  
MARKED C1/4S4 IN UPPER FACE, BT IN LOWER FACE.

A 4 INCH DIAMETER OAK BEARS N6° 44'E 18.3 FEET  
MARKED C1/4S4 IN UPPER FACE, BT IN LOWER FACE.

A 4 INCH DIAMETER OAK BEARS N90° 00'W 16.7 FEET  
MARKED C1/4S4 IN UPPER FACE, BT IN LOWER FACE.

**\*\* RECEIVED \*\***  
 Date 11-22-91 By RS  
 This survey consists of:  
1 sheet(s) Map  
4 page(s) Narrative  
**JACKSON COUNTY  
 SURVEYOR**

**REGISTERED  
 PROFESSIONAL  
 LAND SURVEYOR**

*Arthur Rambo*

**OREGON  
 JULY 26, 1976  
 ARTHUR R. RAMBO  
 No. 1086**