

PHOTOGRAMMETRIC CONTROL SURVEY

FOR
DAVID C. SMITH & ASSOCIATES, INC.

OF HOWARD PRAIRIE RESERVOIR

SITUATED IN SECTION 32 OF TOWNSHIP 38 SOUTH AND RANGE 4 EAST
AND IN SECTION 5 OF TOWNSHIP 39 SOUTH AND RANGE 4 EAST OF THE WILLAMETTE MERIDIAN

JACKSON COUNTY, OREGON

SCALE: 1"=300'

OCTOBER, 1991

LEGEND:

- = TRAVERSE POINT
SET 1/2" X 30" IRON ROD WITH PLASTIC
CAP STAMPED "DEA INC"
- ⊕ = PHOTOGRAMMETRIC CONTROL POINT
SET 5/8" X 30" IRON ROD WITH PLASTIC
CAP STAMPED "PLS. 942"
- ▲ = BUREAU OF RECLAMATION GPS POINT

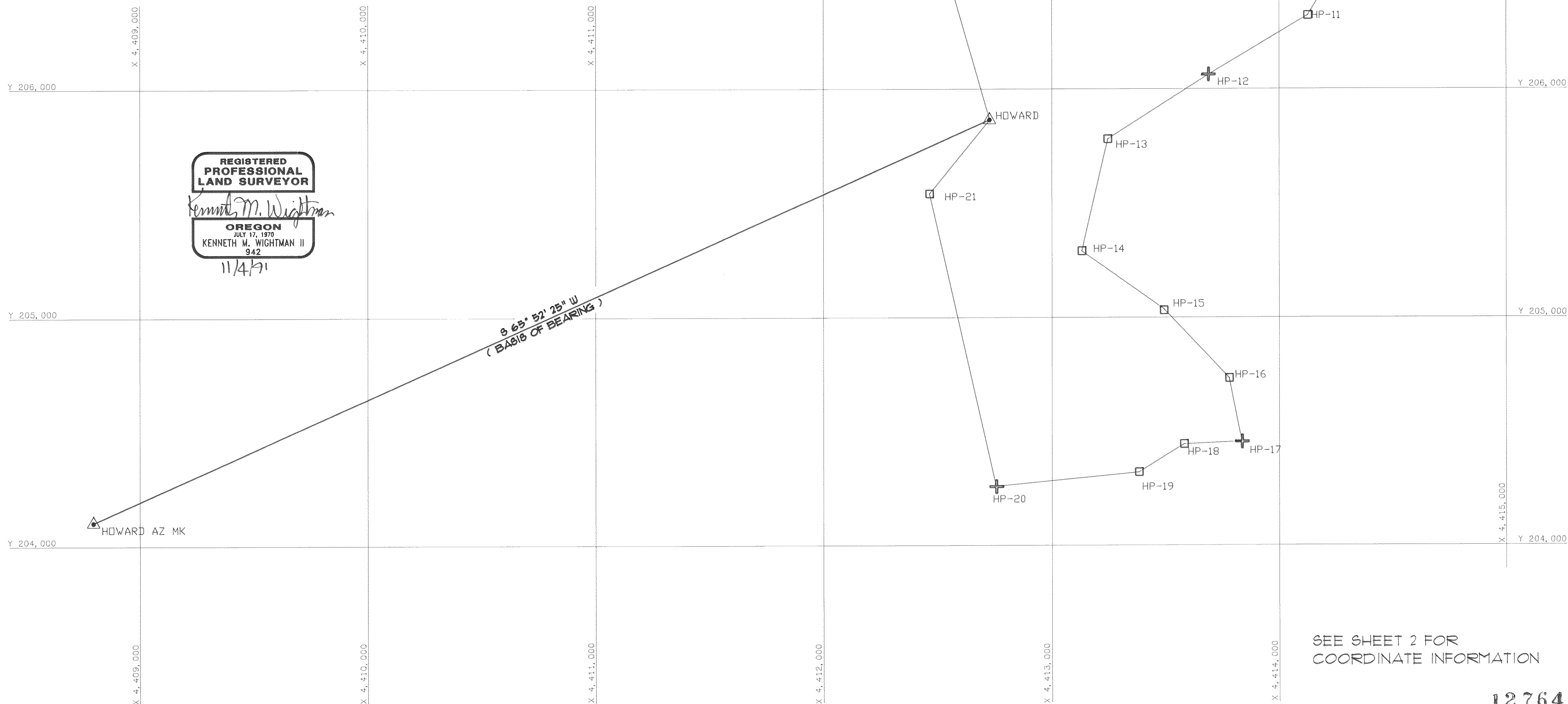


DAVID EVANS AND ASSOCIATES, INC.
2828 S.W. CORBETT AVENUE
PORTLAND, OREGON 97201
(503) 223-6663



11/4/91

8 65° 52' 25" W
(BASIS OF BEARING)



SEE SHEET 2 FOR
COORDINATE INFORMATION

PHOTOGRAMMETRIC CONTROL SURVEY
FOR
DAVID C. SMITH & ASSOCIATES, INC.
OF
HOWARD PRAIRIE RESERVOIR

SITUATED IN SECTION 32 OF TOWNSHIP 38 SOUTH AND RANGE 4 EAST
AND IN SECTION 5 OF TOWNSHIP 39 SOUTH AND 4 EAST OF THE WILLAMETTE MERIDIAN

JACKSON COUNTY, OREGON

OCTOBER, 1991



DAVID EVANS AND ASSOCIATES, INC.
2828 S.W. CORBETT AVENUE
PORTLAND, OREGON 97201
(503) 223-6663

TRAVERSE COORDINATES			
POINT	EASTING	NORTHING	ELEVATION
HOWARD	4412729.01	205863.23	4539.01
HOWARDAZM	4408797.01	204102.20	4518.56
HP-1	4412310.09	207316.98	4509.86
HP-2	4412566.53	207219.85	4558.08
HP-3	4412802.70	207334.11	4569.31
HP-4	4412834.49	207626.59	4563.36
HP-5	4413183.99	207548.44	4575.04
HP-6	4413594.43	207499.88	4581.38
HP-7	4414082.38	207510.72	4595.83
HP-8	4414495.30	207597.08	4596.50
HP-9	4414759.45	207688.20	4568.99
HP-10	4414536.90	206992.38	4529.02
HP-11	4414125.25	206319.35	4490.12
HP-12	4413688.76	206061.10	4467.21
HP-13	4413245.35	205778.96	4518.84
HP-14	4413131.47	205289.41	4558.36
HP-15	4413492.75	205034.43	4559.64
HP-16	4413779.88	204732.03	4569.04
HP-17	4413835.28	204455.23	4577.16
HP-18	4413580.60	204443.63	4585.70
HP-19	4413382.28	204321.54	4588.90
HP-20	4412756.53	204259.60	4519.00
HP-21	4412465.15	205540.85	4506.84
HP-22	4412729.01	205863.23	4539.01

NARRATIVE

The purpose of this survey is for mapping control for the Bureau of Reclamation. The bearing, horizontal and vertical control are based on two G.P.S. points established by the U.S.C. & G.S. published as HOWARD and HOWARD AZ MK. The horizontal datum is based on the state plane coordinate system NAD83 (1991) Oregon South Zone. The vertical datum is based on G.P.S. Point HOWARD (N.G.V.D. 1929, 1947 adjustment) as established by the Bureau of Reclamation.

The control was established by using conventional terrestrial traverse procedures. All observation were done on October 1 and 2, 1991, utilizing a Wild T-2002 theomat equipped with Wild DI-2000 EDM. Adjustment of the coordinate differences was done by using a compass adjustment. The error of closure was 0.04 feet horizontally and 0.09 feet vertically with 0"-00'-08" angular error yielding a precision of 1: 277,674.

GRID INVERSES			
FROM	N. AZIMUTH	DISTANCE	TO
HOWARDAZM	65°52'25.5"	4308.35	HOWARD
HOWARD	343°55'29.5"	1512.91	HP-1
HP-1	110°44'42.9"	274.22	HP-2
HP-2	64°10'54.2"	262.36	HP-3
HP-3	6°12'14.5"	294.21	HP-4
HP-4	102°36'18.7"	358.13	HP-5
HP-5	96°44'49.3"	413.31	HP-6
HP-6	88°43'39.8"	488.07	HP-7
HP-7	78°11'10.8"	421.85	HP-8
HP-8	70°58'07.4"	279.43	HP-9
HP-9	197°44'11.6"	730.54	HP-10
HP-10	211°27'05.3"	188.95	HP-11
HP-11	239°23'23.3"	507.16	HP-12
HP-12	237°31'51.5"	525.56	HP-13
HP-13	193°05'43.0"	502.62	HP-14
HP-14	125°12'44.8"	442.20	HP-15
HP-15	136°29'02.4"	417.00	HP-16
HP-16	168°41'00.0"	282.29	HP-17
HP-17	267°23'35.0"	254.94	HP-18
HP-18	238°22'53.4"	232.89	HP-19
HP-19	264°20'50.4"	628.81	HP-20
HP-20	347°11'15.0"	1313.96	HP-21
HP-21	39°17'58.9"	416.60	HOWARD

REGISTERED
PROFESSIONAL
LAND SURVEYOR

Kenneth M. Wightman
OREGON
JULY 17, 1970
KENNETH M. WIGHTMAN II
942

11/4/91

** RECEIVED **
Date 11-13-91 By BE
This survey consists of:
2 sheet(s) Map
0 page(s) Narrative
JACKSON COUNTY
SURVEYOR

DAVID EVANS & ASSOCIATES, INC.
DATE OCTOBER, 1991
DELIVERY ORDER No. 1-PD-10-10750-005