

12763

# PHOTOGRAMMETRIC CONTROL SURVEY FOR DAVID C. SMITH & ASSOCIATES, INC. OF HYATT RESERVOIR

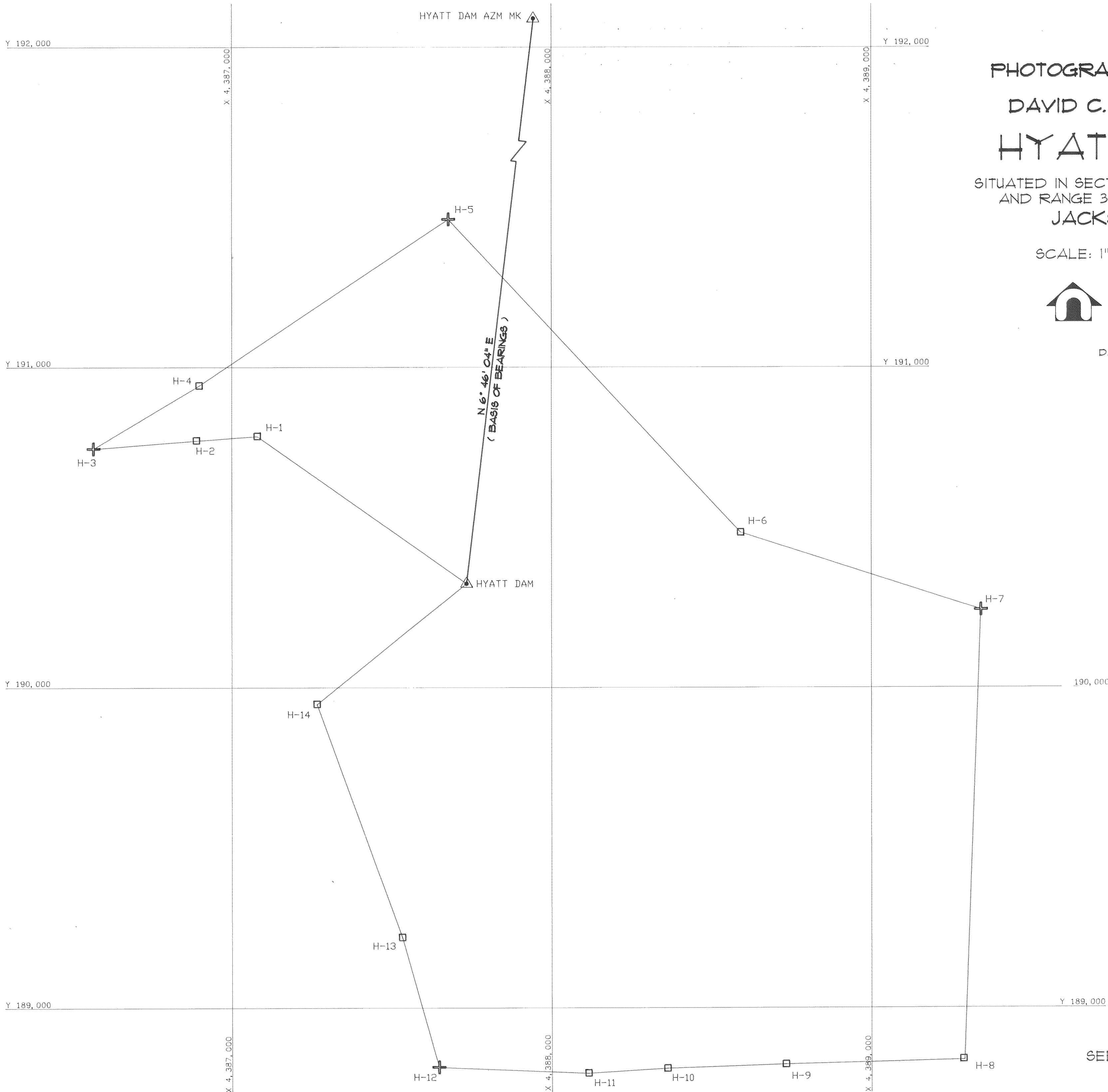
SITUATED IN SECTIONS 15,16,21,22 OF TOWNSHIP 39 SOUTH  
AND RANGE 3 EAST OF THE WILLAMETTE MERIDIAN  
JACKSON COUNTY, OREGON

SCALE: 1"=200'

OCTOBER, 1991



DAVID EVANS AND ASSOCIATES, INC.  
2828 S.W. CORBETT AVENUE  
PORTLAND, OREGON 97201  
(503) 223-6663



REGISTERED  
PROFESSIONAL  
LAND SURVEYOR  
*Kenneth M. Wightman*  
OREGON  
JULY 17, 1970  
KENNETH M. WIGHTMAN II  
942

11/4/91

\*\* RECEIVED \*\*  
Date 11-13-91 By CS  
This survey consists of:  
2 sheet(s) Map  
0 page(s) Narrative  
JACKSON COUNTY  
SURVEYOR

### LEGEND:

- = TRAVERSE POINT  
SET 1/2" X 30" IRON ROD WITH PLASTIC  
CAP STAMPED "DEA INC."
- ⊕ = PHOTOGRAMMETRIC CONTROL POINT  
SET 5/8" X 30" IRON ROD WITH PLASTIC  
CAP STAMPED "PLS. 942"
- ▲ = BUREAU OF RECLAMATION GPS POINT

SEE SHEET 2 FOR COORDINATE INFORMATION

12763

PHOTOGRAMMETRIC CONTROL SURVEY  
FOR  
DAVID C. SMITH & ASSOCIATES, INC.  
OF  
**HYATT RESERVOIR**  
SITUATED IN SECTIONS 15,16,21,22 OF TOWNSHIP 39 SOUTH  
AND RANGE 3 EAST OF THE WILLAMETTE MERIDIAN  
JACKSON COUNTY, OREGON

OCTOBER, 1991



DAVID EVANS AND ASSOCIATES, INC.  
2828 S.W. CORBETT AVENUE  
PORTLAND, OREGON 97201  
(503) 223-6663

**NARRATIVE**

The purpose of this survey is for mapping control for the Bureau of Reclamation. The bearing, horizontal and vertical control are based on two G.P.S. points established by the U.S.C. & G.S. published as HYATT DAM and HYATT DAM AZ MK. The horizontal datum is based on the state plane coordinate system NAD83 (1991) Oregon South Zone. The vertical datum is based on G.P.S. Point HYATT DAM (N.G.V.D. 1929, 1941 adjustment) as established by the Bureau of Reclamation.

The control was established by using conventional terrestrial traverse procedures. All observation were done on October 3, 1991, utilizing a Wild T-2002 theomat equipped with Wild DI-2000 EDM. Adjustment of the coordinate differences was done by using a compass adjustment. The error of closure was 0.11 feet horizontally, and 0.02 feet vertically with 0'-00'-11" angular error yielding a precision of 1: 87,049.

TRAVERSE COORDINATES			
POINT	EASTING	NORTHING	ELEVATION
H-1	4387080.00	190784.49	5035.95
H-2	4386889.45	190770.73	5039.64
H-3	4386567.09	190745.52	5005.75
H-4	4386898.22	190942.62	5034.65
H-5	4387677.36	191461.42	5004.87
H-6	4388592.37	190483.42	5002.04
H-7	4389342.13	190242.63	5005.21
H-8	4389290.62	188837.47	5036.50
H-9	4388733.44	188823.15	5063.66
H-10	4388361.74	188810.55	5065.48
H-11	4388115.45	188795.23	5064.61
H-12	4387647.23	188814.79	5047.01
H-13	4387532.78	189219.42	5033.37
H-14	4387266.49	189947.95	4971.87
H-15	4387134.42	190324.87	5021.16
HYATTAZM	4387977.16	192375.33	5009.03
HYATTDAM	4387134.42	190324.87	5021.16

GRID INVERSES			
FROM	N. AZIMUTH	DISTANCE	TO
HYATTAZM	186°46'04.3"	2064.85	HYATTDAM
HYATTDAM	305°04'54.9"	799.70	H-1
H-1	265°52'14.0"	191.05	H-2
H-2	265°31'39.2"	323.35	H-3
H-3	59°14'13.5"	385.35	H-4
H-4	56°20'31.5"	936.06	H-5
H-5	136°54'20.7"	1339.31	H-6
H-6	107°48'17.3"	787.47	H-7
H-7	182°05'57.9"	1406.10	H-8
H-8	268°31'39.2"	557.36	H-9
H-9	268°03'33.4"	371.92	H-10
H-10	266°26'20.7"	246.76	H-11
H-11	272°23'33.8"	468.63	H-12
H-12	344°12'21.1"	420.50	H-13
H-13	339°55'20.2"	775.68	H-14
H-14	51°08'54.8"	600.85	HYATTDAM



11/4/91

\_\_\_\_\_  
DAVID EVANS & ASSOCIATES, INC.  
DATE OCTOBER, 1991  
DELIVERY ORDER No. 1-PD-10-10750-004