

MAP of SURVEY

SURVEYED for : BOISE CASCADE CORP. WESTERN OREGON AREA P.O. BOX 100 MEDFORD, OREGON 97501

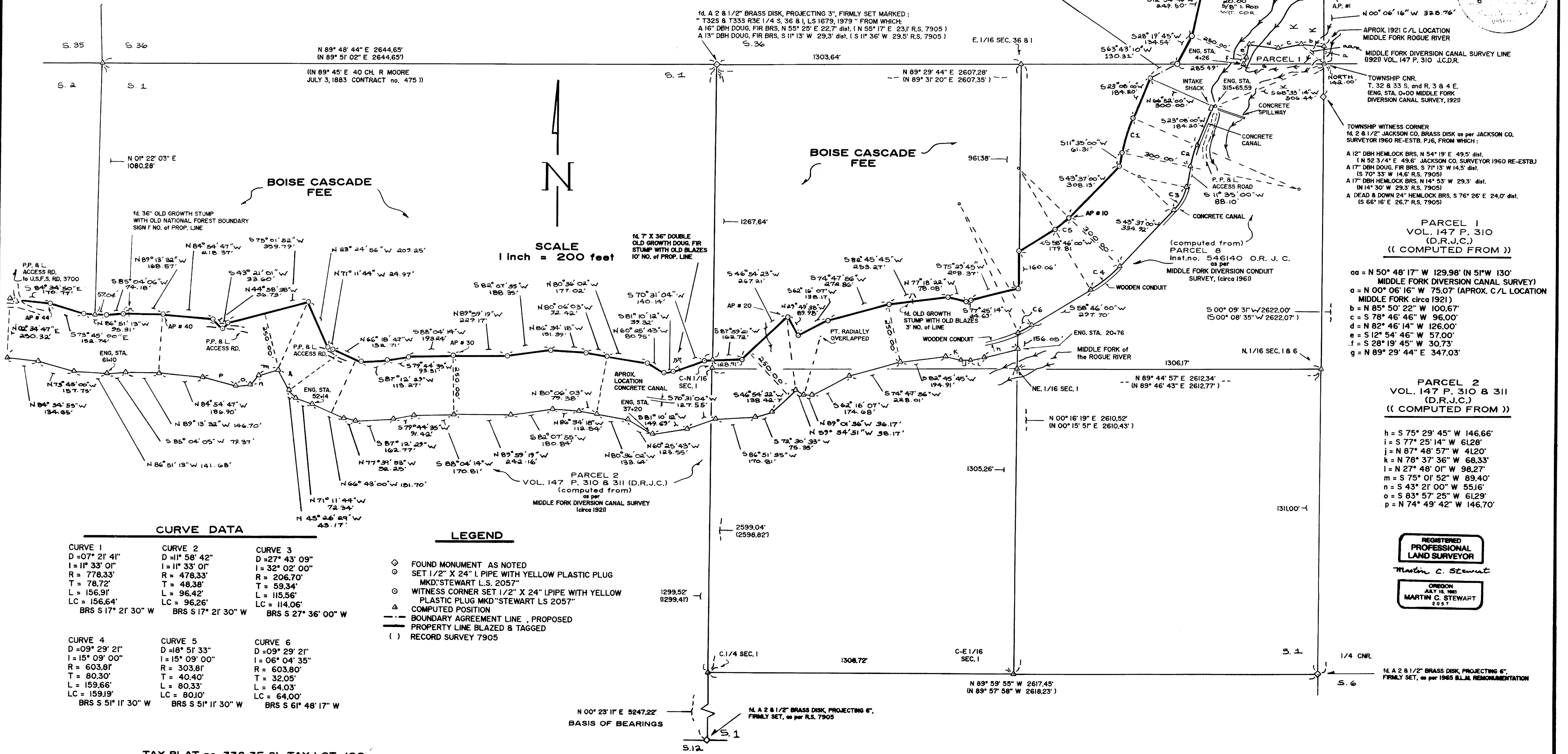
LOCATION : N 1/2 of SECTION 1 and NE 1/4 of SECTION 2 T.33 S. R.3 E. W.M. and SE 1/4 of SECTION 36 T.32 S. R.3 E. W.M.

SURVEYED by : M.C. STEWART SURVEYING 6370 HIGHWAY 66 ASHLAND, OREGON 97520 PHONE 503-482-0188

BASIS of BEARINGS : NORTH - SOUTH CENTERLINE SECTION 1 RECORD SURVEY 7905

TO : ESTABLISH PROPERTY LINES and MONUMENT PROPERTY CORNERS ALONG CLIENT'S SO'LY PROPERTY LINE

DATE : AUGUST 26, 1991



10-1-91

APPROX. 1921 C/L LOCATION MIDDLE FORK DIVERSION CANAL SURVEY LINE (1921 VOL. 147 P. 310 J.C.D.R.)

TOWNSHIP WITNESS CORNER 1/4 2 & 1/2" JACKSON CO. BRASS DISK as per JACKSON CO. SURVEYOR 1960 RE-ESTB. P.16, FROM WHICH:

PARCEL 1 VOL. 147 P. 310 (D.R.J.C.) ((COMPUTED FROM))

PARCEL 2 VOL. 147 P. 310 & 311 (D.R.J.C.) ((COMPUTED FROM))

h = S 75° 29' 45" W 146.66' i = S 77° 25' 14" W 61.28' j = N 87° 48' 57" W 41.20' k = N 78° 37' 36" W 68.33' l = N 27° 48' 01" W 98.27' m = S 75° 01' 52" W 89.40' n = S 43° 21' 00" W 55.16' o = S 83° 57' 25" W 61.29' p = N 74° 49' 42" W 146.70'

REGISTERED PROFESSIONAL LAND SURVEYOR Martin C. Stewart OREGON JULY 15, 1983 MARTIN C. STEWART 2057

Table with 3 columns: CURVE 1, CURVE 2, CURVE 3, CURVE 4, CURVE 5, CURVE 6. Each column lists curve data including D, I, R, T, L, LC, and BRS.

- LEGEND: FOUND MONUMENT AS NOTED, SET 1/2" X 24" PIPE WITH YELLOW PLASTIC PLUG, WITNESS CORNER SET 1/2" X 24" PIPE WITH YELLOW PLASTIC PLUG MKD "STEWART LS 2057", COMPUTED POSITION, BOUNDARY AGREEMENT LINE - PROPOSED, PROPERTY LINE BLAZED & TAGGED, RECORD SURVEY 7905

TAX PLAT no. 33S 3E S1 TAX LOT 100

SEE ACCOMPANYING 6 PAGE NARRATIVE of SURVEY

M.C. STEWART SURVEYING
6370 HIGHWAY 66
ASHLAND, OREGON 97520
Phone 503-482-0188

SURVEY NO. **12676**

Narrative of Survey
to comply with O.R.S. 209.250

SURVEY FOR: Boise Cascade Corp.
Timber and Wood Products Division
Western Oregon Area
P.O. Box 100
Medford, Oregon 97501

LOCATION: The North One-Half of Section One and the
Northeast One-Quarter of Section 2 in Township 33
South, Range 3 East and the Southeast One-Quarter
of Section 36 Township 32 South Range 3 East of
the Willamette Meridian

PURPOSE: To establish property lines by blazing and
tagging trees along either side of shown Property
Line and monument Angle Points (#1 thru #44) with
reference trees taken and listed on accompanying
narrative pages.

DATE: September 29, 1991

BASIS OF

BEARING: North-South Centerline of Section One
as per Record Survey no. 7905

PROCEDURE: A control traverse incorporated found monuments
noted in Map of Survey and then was rotated to match
aforementioned Record Survey centerline. Topography ties
were made to establish positioning of the Middle Fork of the
Rogue River and Pacific Power canal, conduit, and related
power improvements.

Title research indicated that controlling elements were
called surveys, The Middle Fork Diversion Canal Survey, circa
1921 and the Middle Fork Diversion Conduit Survey, circa 1961
and as these were not of record Pacific Power was contacted
regarding any possible records they might have. Several maps
were found though they were not identified as to their origin
but were dated and in some cases fit well for deed calls and
general topography. These maps provided a general guide to
the written notes of the called for Middle Fork Diversion
Canal Survey, 1921 (recorded in Vol.147 pages 309 to 311 Deed
Records of Jackson County, Oregon). In the case of the Middle
Fork Diversion Conduit Survey, 1961 (recorded in instrument
no. 546140 Parcel 8 Official Records of Jackson County,
Oregon) it's retracement paralleled the existing northerly
line of the canal or conduit. Therefore the original calls
of this description were maintained and radially projected to
produce a 300 foot offset northerly of this described survey

M.C. STEWART SURVEYING
6370 HIGHWAY 66
ASHLAND, OREGON 97520
Phone 503-482-0188

line. For the Middle Fork Diversion Canal Survey, 1921 (in Section 36) record bearing was rotated to fit the established South line of Section 36 and otherwise record distances were held and a 250 foot radial offset was produced to establish the shown property line. The Middle Fork Diversion Canal Survey, 1921 according to Pacific Power officials pre-dated the construction of the canal by at least 7 years and extended well beyond the areas shown on the Map of Survey. From Engineer's Station 4+26 to 20+76 is a portion of this preliminary survey not used in the description. These conveyances were between Rogue River Timber Co. (subsequently Elk Lumber Co., and subsequently Boise Cascade Corp.) and California Oregon Power Co. (subsequently Pacific Power) and this parcel was not conveyed until January 1962 (instrument no. 546140 O.R.J.C.) as this quarter-quarter was not owned by Rogue River Timber Co. at the time of recording, in 1923.

Also, from Engineer's Station 20+76 to it's terminus at Engineer's Station 134+57 (closing into the Northwest Section Corner of Section 2) this survey line was rotated to the Jackson County Brass Disk found at this Section Corner and adjusted per broken boundaries adjustments (1973 B.L.M. Manual of Surveying Instructions) and a 250 foot radial offset was was produced to create the property line shown on the Map of Survey. When retraced, evidence was found (old ax work and blazes) along this line on old growth stumps indicating a prior cutting line had been established and used. That these stumps also had spring-board holes indicated that the logging along this line predated the popular advent of the chainsaw, (approximately late 1930's) yet they had been logged prior to being burned, (a major fire burned this area in early 1900's).

Pacific Power and Boise Cascade were notified as to the gap in Pacific Power's right of way in the Northeast corner of Section 1 and it was recommended that a Boundary Line Agreement be executed to create the line shown on the Map of Survey. This will solve the northerly end of this gap only, additional work would be required to resolve the southerly end.

The Middle Fork of the Rogue River upstream of the concrete spillway shown on the Map of Survey has changed course several times since the original survey (R. Moore, 1883) and it's location in 1921 was approximated by utilizing the preliminary map provided by Pacific Power. As it appears that these changes in course were the results of flooding and therefore appear to be either revulsion or avulsion, as the case maybe; the riparian rights of 1921 were held as noted on said preliminary map i.e. the thread of the Middle Fork as recreated in 1921; it being unlikely the Rogue River was commercially navigable at this point.

M.C. STEWART SURVEYING
 6370 HIGHWAY 66
 ASHLAND, OREGON 97520
 Phone 503-482-0188

At the Northwest Section Corner of Section 2, found a 2 & 1/2" Jackson County brass disk, flush, and marked as per Jackson County Surveyor 2nd Re-estb., 1987, from which:

- A 6.6" DBH White Fir bears N72° 47'E, 32.9' distant
 (N72°E 32.90' Jackson Co. Surveyor 2nd Re-estb. 1987)
- A 5.6" DBH Doug. Fir bears S52° 52'E, 24.0' distant
 (S54°E 23.8' Jackson Co. Surveyor 2nd Re-estb. 1987)
- A 34" DBH I. Cedar bears S73° 34'W, 35.2' distant
 (S73°W 35.3' Jackson Co. Surveyor 1st Re-estb. 1948)
- A 6.5" DBH White Fir bears N68° 22'W, 52.7' distant
 (N70°W 52.65' Jackson Co. Surveyor 2nd Re-estb. 1987)

Listing of Reference Trees taken at Angle Points #2 thru #44
 (all measurments to reference trees are to a side-center aluminum nail)

@ Angle Point #2

- A 12" DBH Hemlock bears S32°W, 13.7' distant
- A 6" DBH R. Alder bears N72°W, 11.4' distant

@ Angle Point #3

- A 5" DBH Doug. Fir bears N80°E, 6.0' distant
- A 5" DBH Doug. Fir bears S28°E, 8.7' distant

@ Angle Point #4

- A 7.5" DBH Chinquapin bears N62°E, 8.2' distant
- A 8.4" DBH Hemlock bears S18°W, 18.9' distant

@ Angle Point #5

- A 8.4" DBH Chinquapin bears N88°E, 26.0' distant
- A 8.0" DBH White Fir bears N30°W, 13.0' distant

@ Angle Point #6

- A 5" DBH Hemlock bears N78°E, 8.2' distant
- A 10.7" DBH White Fir bears N47°W, 4.4' distant

@ Angle Point #7

- A 19.0" DBH Doug. Fir bears N10°E, 10.9' distant
- A 10.0" DBH Hemlock bears S53°W, 17.2' distant

@ Angle Point #8

- A 5.4" DBH Madrone bears S06°E, 7.9' distant
- A 8.0" DBH Chinquapin bears S58°W, 8.5' distant

@ Angle Point #9

- A 5" DBH Doug. Fir bears S22°E, 7.9' distant
- A 14.0" DBH Hemlock bears N40°W, 3.5' distant

@ Angle Point #10

- A 6.6" DBH Doug. Fir bears S82°E, 5.7' distant

M.C. STEWART SURVEYING
6370 HIGHWAY 66
ASHLAND, OREGON 97520
Phone 503-482-0188

12676

A 5.0" DBH Hemlock bears S30°W, 8.0' distant

@ Angle Point #11
A 13.0" DBH Doug. Fir bears N10°W, 5.8' distant
A 10.0" DBH Madrone bears N83°W, 21.2' distant

@ Angle Point #12
A 15.0" DBH Doug. Fir bears S36°W, 4.6' distant
A 15.2" DBH Doug. Fir bears N70°W, 9.4' distant

@ Angle Point #13
A 17.1" DBH White Fir bears N76°E, 7.1' distant
A 6.5" DBH Doug. Fir bears S40°W, 1.8' distant

@ Angle Point #14
A 9.8" DBH Doug. Fir bears S44°W, 7.7' distant
A 13.5" DBH Doug. Fir bears N65°W, 8.6' distant

@ Angle Point #15
A 21.0" DBH Doug. Fir bears S02°E, 3.9' distant
A 16.8" DBH White Fir bears S80°W, 6.4' distant

@ Angle Point #16
A 6.3" DBH Doug. Fir bears N60°E, 11.8' distant
A 15.3" DBH White Fir bears S10°E, 13.3' distant

@ Angle Point #17
A 6.4" DBH Chinquapin bears S24°E, 3.9' distant
A 10.6" DBH Doug. Fir bears N80°W, 16.8' distant

@ Angle Point #18
A 10.6" DBH Doug. Fir bears N42°E, 14.3' distant
A 17.0" DBH Doug. Fir bears S38°E, 15.7' distant

@ Angle Point #19
A 12.0" DBH Doug. Fir bears N44°E, 16.2' distant
A 8.8" DBH Madrone bears S32°E, 6.4' distant

@ Angle Point #20
A 15.0" DBH Doug. Fir bears N26°E, 3.9' distant
A 8.4" DBH Chinquapin bears S68°W, 7.7' distant

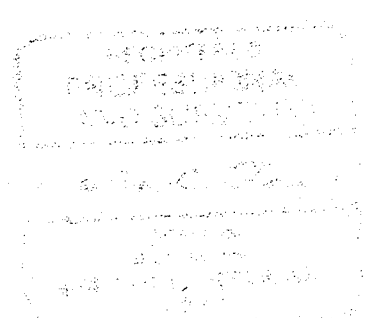
@ Angle Point #21
A 9.9" DBH Doug. Fir bears N10°E, 21.1' distant
A 9.0" DBH Doug. Fir bears S78°W, 4.8' distant

@ Angle Point #22
A 7.3" DBH White Fir bears S04°E, 5.8' distant
A 12.4" DBH White Fir bears N22°W, 8.5' distant

@ Angle Point #23
A 6.7" DBH Doug. Fir bears N31°E, 24.0' distant
A 12.8" DBH Doug. Fir bears S45°E, 4.2' distant

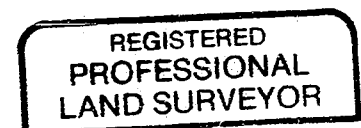
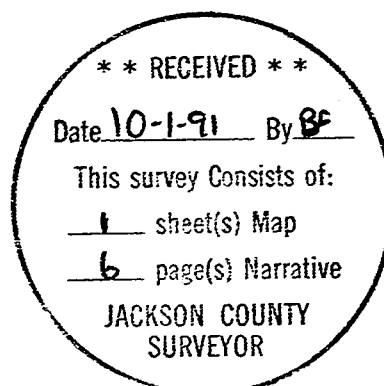
M.C. STEWART SURVEYING
 6370 HIGHWAY 66
 ASHLAND, OREGON 97520
 Phone 503-482-0188

- @ Angle Point #24
 A 5" DBH wild Cherry bears N45°E, 4.4' distant
 A 12" DBH Madrone bears S60°W, 8.5' distant
- @ Angle Point #25
 A 10.6" DBH White Fir bears North, 1.8' distant
 A 14.6" DBH White Fir bears S75°W, 7.6' distant
- @ Angle Point #26
 A 11.4" DBH Doug. Fir bears S77°W, 18.2' distant
 A 10.8" DBH Chinquapin bears N05°W, 6.4' distant
- @ Angle Point #27
 A 13.4" DBH Doug. Fir bears North, 15.8' distant
 A 9.2" DBH Doug. Fir bears S12°W, 7.4' distant
- @ Angle Point #28
 A 34.1" DBH I. Cedar bears N76°E, 18.9' distant
 A 22.0" DBH Doug. Fir bears S33°W, 16.3' distant
- @ Angle Point #29
 A 6.5" DBH Doug. Fir bears North, 9.1' distant
 A 8.1" DBH Chinquapin bears S80°W, 21.2' distant
- @ Angle Point #30
 A 5" DBH Doug. Fir bears N21°E, 6.2' distant
 A 6.6" DBH Doug. Fir bears West, 14.4' distant
- @ Angle Point #31
 A 6.0" DBH Madrone bears N38°E, 5.3' distant
 A 6.0" DBH Madrone bears N80°E, 14.9' distant
- @ Angle Point #32
 A 6.0" DBH White Fir bears North, 3.3' distant
 A 5" DBH Doug. Fir bears S80°E, 4.0' distant
- @ Angle Point #33
 A 12.5" DBH Doug. Fir bears N38°E, 4.8' distant
 A 5" DBH Doug. Fir bears S44°W, 3.4' distant
- @ Angle Point #34
 A 15.3" DBH Doug. Fir bears S75°E, 13.8' distant
 A 5/8" bridge spike bears N07° 23'W, 7.45' distant
- @ Angle Point #35
 A 17.0" DBH Doug. Fir bears N40°E, 8.9' distant
 A 20.0" DBH Doug. Fir bears South, 3.0' distant
- @ Angle Point #36
 A 12.0" DBH Doug. Fir bears N45°E, 8.8' distant
 A 10.2" DBH Doug. Fir bears S25°W, 3.5' distant



M.C. STEWART SURVEYING
 6370 HIGHWAY 66
 ASHLAND, OREGON 97520
 Phone 503-482-0188

- @ Angle Point #37
 A 11.0" DBH Doug. Fir bears S88°E, 31.3' distant
 A 10.0" DBH Hemlock bears N18°W, 30.7' distant
- @ Angle Point #38
 A 5.5" DBH Doug. Fir bears S58°E, 21.4' distant
- @ Angle Point #39
 A 5" DBH Hemlock bears N15°E, 10.9' distant
 A 9.1" DBH Hemlock bears N82°W, 11.1' distant
- @ Angle Point #40
 A 6.8" DBH Chinquapin bears N16°E, 19.6' distant
 A 5" DBH Doug. Fir bears S72°W, 14.5' distant
- @ Angle Point #41
 A 6.5" DBH Doug. Fir bears S40°E, 9.1' distant
 A 9.0" DBH Madrone bears N80°W, 3.5' distant
- @ Angle Point #42
 A 7.9" DBH Madrone bears N65°E, 4.6' distant
 A 8.3" DBH White Fir bears S05°E, 9.0' distant
- @ Angle Point #43
 A 5" DBH Doug. Fir bears N28°E, 20.5' distant
 A 5.5" DBH Doug. Fir bears N70°W, 30.2' distant
- @ Angle Point #44
 A 9.0" DBH Chinquapin (s'ly fork) bears N32°E, 5.6' distant
 A 5" DBH Doug. Fir bears S10°W, 6.8' distant



Martin C. Stewart

