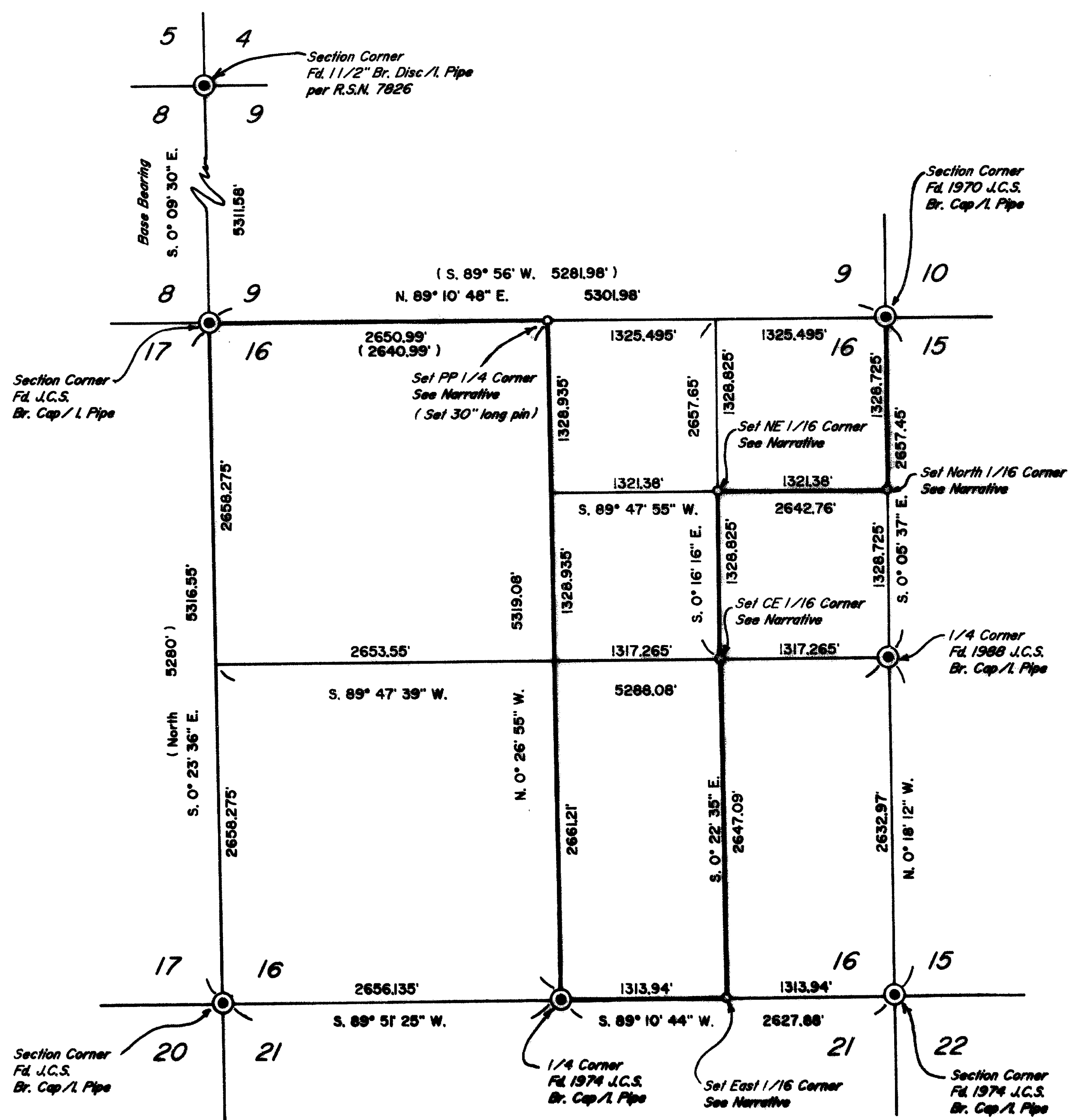


12587



PLAT OF SURVEY

LOCATED in Section 16, T. 36 S.,
R. 1 E., W.M., Jackson County, Oregon.

May 31, 1991

SURVEYED FOR:

Panther Crushing Inc.
P.O. Box 2515
White City, Oregon 97503

SURVEYED BY:

Edwards Surveying and Land Planning Inc.
823 W. 8th Street
Medford, Oregon 97501
Phone: (503) 776-2313

REGISTERED
PROFESSIONAL
LAND SURVEYOR

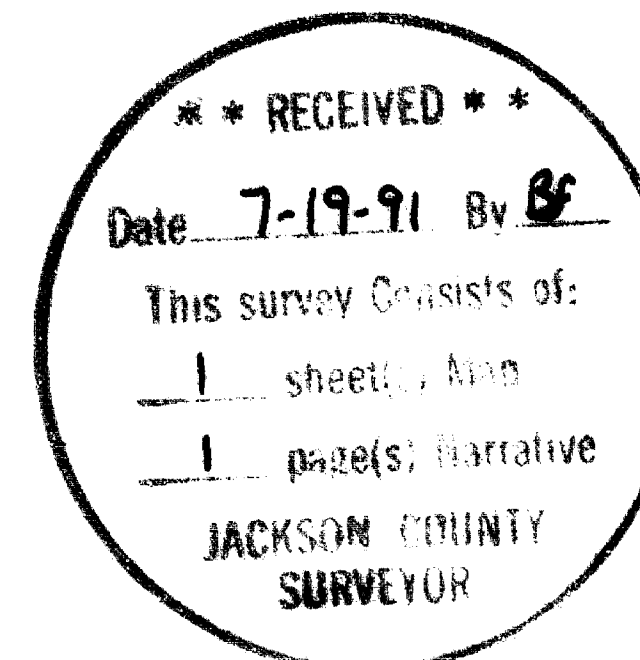
Darrel W. Edwards
OREGON
JULY 8, 1988
DARREL W. EDWARDS
741

LEGEND

- Indicates monument found as noted.
- Indicates 5/8" x 24" steel pin w/plastic cap mkd. "D.W. EDWARDS-PLS 741" set.
- () Denotes original Gov't. survey data

SCALE: 1" = 1000'

BASIS OF BEARINGS: West line of Section 9 per R.S.N. 7826



12587

Center East 1/16 Corner: Set 5/8" x 24" steel pin,
exposed 2", in mound of stones.

6" W. Oak bears N. 20° W. 1.47'
Scribed: C.E. 1/16, S-16, BT

6" W. Oak bears N. 37° E. 2.10'
Scribed: C.E. 1/16, S-16, BT

North East 1/16 Corner: Set 5/8" x 24" steel pin,
exposed 2", in mound of stones.

17" W. Oak bears N. 81° 20' E.
18.30'
Scribed: N.E. 1/16, S-16, BT

13" W. Oak bears N. 12° 20' W.
19.20'
Scribed: N.E. 1/16, S-16, BT

North 1/16 Corner: Set 5/8" x 24" steel pin, exposed
2", in mound of stones.

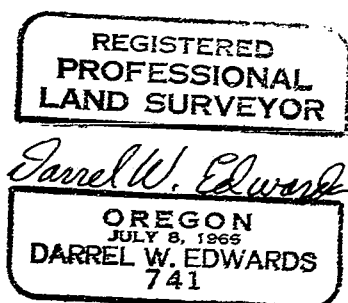
17" W. Oak bears N. 28° 40' W.
18.77'
Scribed: N. 1/16, S-16, BT

17" W. Oak bears N. 89° 30' E.
32.29'
Scribed: N. 1/16, S-15, BT

BASIS OF
BEARINGS: R.S.N. 7826

EQUIPMENT: Nikon NTD-4 Semi-automatic Theodolite/E.D.M.

DATE
COMPLETED: May 31, 1991



EDWARDS SURVEYING AND LAND PLANNING INC.
 REGISTERED LAND SURVEYORS
 823 WEST 8TH STREET
 MEDFORD, OREGON 97501
 (503)776-2313

SURVEY NARRATIVE TO COMPLY WITH CHAPTER 209, PARAGRAPH 205,
 OREGON REVISED STATUTES

SURVEY FOR: Panther Crushing, Inc.
 P.O. Box 2515
 White City, OR 97503

LOCATION: Section 16, T. 36 S., R. 1 E. of the W.M. in Jackson
 County, Oregon.

PURPOSE: To survey and monument the outside perimeter of the
 West 1/2 of the Southeast 1/4, West 1/2 of the North-
 east 1/4 and the Northeast 1/4 of the Northeast 1/4 of
 Section 6.

PROCEDURE: Traversed between found monuments on the outside bound-
 ary of Section 6 as shown on the accompanying Plat of
 Survey. Made computations to subdivide Section 6.
 Beginning at the Northwest corner of Section 16, I
 traversed along true line to the proportioned North 1/4
 corner; thence traversed South along true line to the
 monumented South 1/4 corner; thence traversed East
 along true line to the calculated East 1/16 corner;
 thence traversed North along true line to the calcu-
 lated Center East 1/16 corner; thence traversed North
 along true line to the calculated Northeast 1/16
 corner; thence traversed East along true line to the
 calculated North 1/16 corner; thence traversed North
 along true line to the monumented Northeast corner of
 Section 6. Balanced all closed traverses and set 5/8"
 steel pins at corners as shown on the accompanying Plat
 of Survey.

North 1/4 Corner: Set 5/8" x 30" steel pin, exposed 2"
 in mound of stones.

5" W. Oak bears N. 63° W. 26.25'
 Scribed: 1/4 Cor.; S-9, BT

6" W. Oak bears S. 17° W. 5.80'
 Scribed: 1/4 Cor., S-16, BT

6" W. Oak bears S. 6° E. 13.0'
 Scribed: 1/4 Cor., S-16, BT

4" W. Oak bears N. 51° E. 29.9'
 Scribed: 1/4 Cor., S-9, BT

East 1/16 Corner: Set 5/8" x 24" steel pin, exposed 2"
 in mound of stones.

4" Pine bears S. 82° W. 4.50'
 Scribed: E. 1/16, S-21, BT

8" Pine bears N. 15° E. 30.80'
 Scribed: E. 1/16, S-16, BT

