

RECORD OF SURVEY
FOR WEYERHAEUSER TIMBER CO
SITUATED IN SECTION 3, T41S R04E WM
JACKSON COUNTY, OREGON

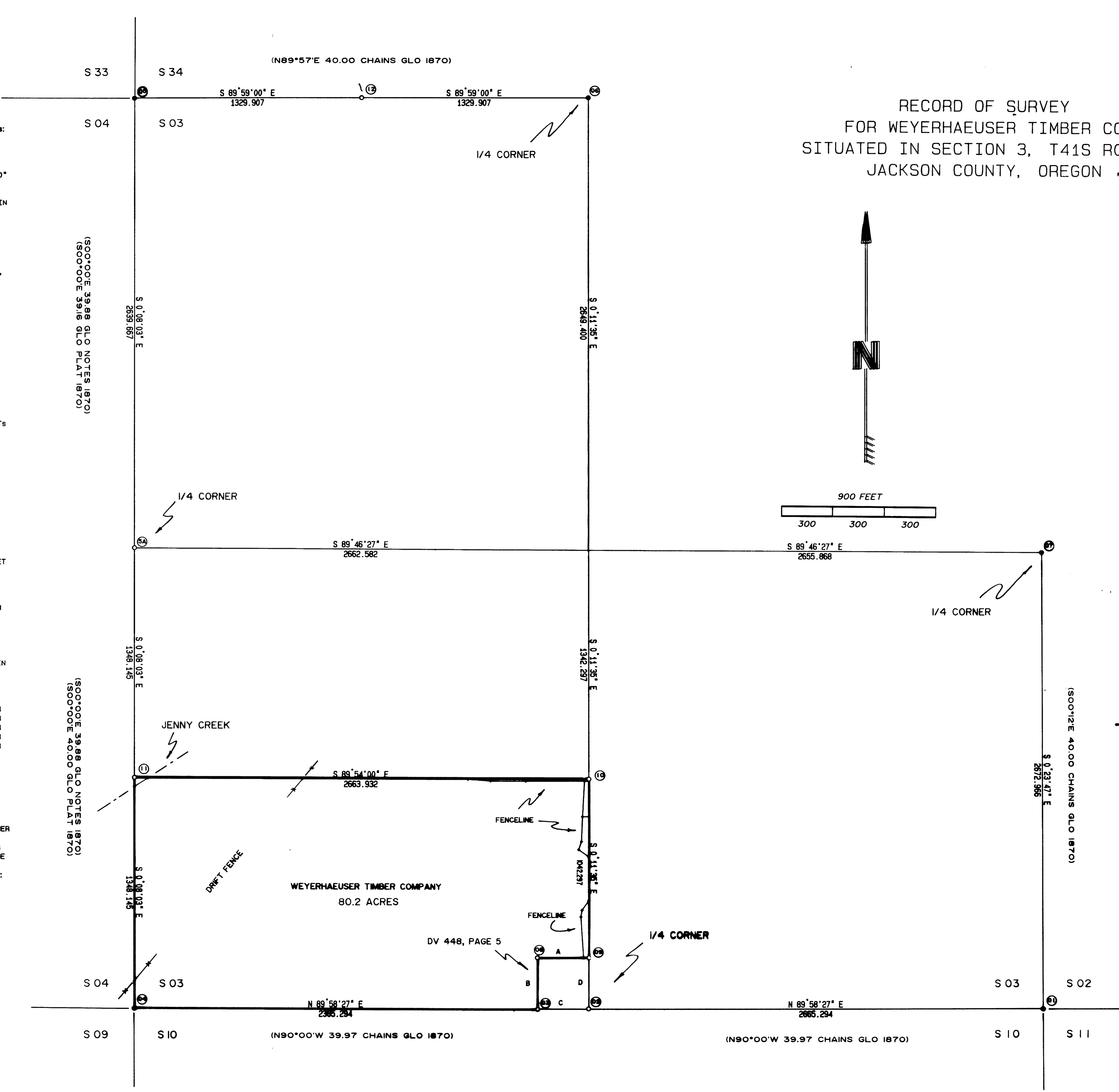
CORNER B.T.s & REFERENCES:

- 01. SEC COR TO SECS 3, 2, 11 & 10, FD 1967 JCS BC IN A MD, B.T.s:
14" OAK N23 04E 55.95 (55.6) BT HEALED
13" JUNIPER S70 39E 63.00 (62.5) CS BT SCRIBE VISIBLE
12" OAK S29 51W 54.70 (54.4) BT HEALED
14" JUNIPER N23 56W 60.15 (59.9) CS BT SCRIBE VISIBLE
- 02. 1/4 COR TO SECS 3 & 10, SET BY SINGLE PROPORTION A 2"x30" STEEL PIPE WITH A BRASS CAP, NO SIGN OF PIPE SET BY KLAMATH CO ROS 508, FD A STUMP NEAR THE ORIGINAL NE BT POSITION, OUT OF THE GROUND AND NOT POSSIBLE TO ASCERTAIN ITS POSITION, THIS STUMP HAS A FACE ON IT, B.T.s:
9" OAK N34 45E 90.50 NEW BT
8" PINE N76 38E 87.21 NEW REF
6" OAK S57 32E 117.21 NEW REF
8" OAK S29 52E 117.81 NEW BT
MD STONE S26 36E 76.60
FENCE COR N49 26W 2.7, FENCE RUNS NORTH AND WEST
- 03. PROPERTY CORNER 300 FEET WEST OF 1/4 COR 3 & 10, SET 5/8" PIN WITH SURV CAP STAMPED "LS 928 1991", REF.S:
6" PINE N79 36W 12.60 REF
7" OAK N14 04W 34.12 REF
- 04. SEC COR TO SECS 4, 3, 10 & 9, FD 1967 JCS BC, B.T.s:
15" PINE S89 24E 24.68 (24.1) BT HEALED
9" OAK S24 25E 36.30 (35.8) BT HEALED
36" OAK S60 43W 69.35 (70.1) BT HEALED
20" FIR N24 44W 29.92 (29.6) BT HEALED
- 05. 1/4 COR TO SECS 4 & 3, SET A 2" x 30" STEEL PIPE WITH A BRASS CAP BY SINGLE PROPORTION, SEE NARRATIVE, B.T.s:
9" OAK N34 42E 14.90 NEW BT
9" OAK N89 25E 27.84 NEW REF
7" OAK S16 27W 37.47 NEW REF
8" OAK N65 95W 11.37 NEW BT
E-W FENCE 100.5 FEET SOUTH OF THE CORNER
- 06. SEC COR TO SECS 33, 34, 3 & 4, FD 1975 JCS BC IN A MD B.T.s:
9" OAK S16 09E 49.73 (49.65) BT HEALED
8" OAK S37 48W 19.05 NEW REF, TREE IS A FENCE COR
9" OAK S67 44W 28.55 (28.64) BT HEALED
9" OAK N69 36W 45.06 NEW REF
- 07. 1/4 COR TO SECS 3 & 2, FD 1975 JCS BC IN A MD, B.T.s:
16" PINE N25 23E 58.92 NEW REF
9" OAK S49 14E 90.57 NEW REF
10" OAK S32 57E 79.86 (79.90) BT HEALED
18" JUNIPER S71 19W 58.04 (58.68) CS BT SCRIB VIS
- 08. PROPERTY CORNER 300 FEET N & 300 FEET W OF S 1/4 COR, SET 5/8" PIN WITH SURV CAP STAMPED "GASTALDI LS 928", B.T.s:
14" PINE S51 59W 41.12 NEW REF
11" PINE N65 05W 45.41 NEW REF
MD STONE & WOODEN STAKE S12 39W 23.4
- 09. PROPERTY CORNER 300 FEET N OF S 1/4 CORNER, SET 5/8" PIN WITH SURV CAP STAMPED "GASTALDI LS 928", B.T.s:
9" PINE S86 36W 9.43 NEW REF
8" PINE N35 20W 21.51 NEW REF
CROSS N-S FENCE 30 FEET WEST OF CORNER
CROSS NE-SW FENCE NORTH OF CORNER
- 10. CS 1/16TH CORNER OF SEC 3, SET 5/8" PIN WITH SURV CAP, IN SMALL MD OF ROCKS, B.T.s:
9" PINE S58 36W 57.30 NEW BT
8" PINE N34 40W 59.96 NEW BT
FROM THE CORNER:
CROSS NE-SW FENCE S00 11 35E 707.34 FEET SOUTH OF CORNER
CROSS E-W FENCE S00 11 35E 451.28 FEET SOUTH OF CORNER
CROSS E-W FENCE S00 11 35E 214.94 FEET SOUTH OF CORNER
CROSS E-W FENCE S00 11 35E 6.63 FEET SOUTH OF CORNER
CROSS NE-SW FENCE N89 54 00W 706.00 FEET WEST OF CORNER
MEAN OF FENCE LINES AT FENCE CORNER BEARS S71 49W 25.38 FEET, FENCE RUNS E-W & S
- 11. S 1/16TH COR TO SECTIONS 4 & 3, SET 5/8" PIN WITH SURV CAP, B.T.s:
9" OAK S83 54W 20.77 NEW BT
8" OAK N61 57E 13.64 NEW BT
FROM THE CORNER:
CROSS JENNY CREEK 50 FEET SOUTH OF CORNER
CROSS NE-SW DRIFT FENCE S00 08 03E 1188.11 SOUTH OF CORNER
CROSS JENNY CREEK 60 FEET EAST OF CORNER
CROSS NE-SW DRIFT FENCE S89 54 00E 986.56 EAST OF CORNER
DRIFT FENCE NOT LOCATED BETWEEN THE TWO CROSSINGS AND THE FENCE IS NOT STRAIGHT BETWEEN THE TWO TIES.
- 12. W 1/16TH COR TO SECS 3 & 2, SET 5/8" PIN WITH SURV CAP, B.T.s:
4" LODGEPOLE N56 52E 44.52 SCRIBED "X" BT
15" PINE S12 39E 132.67 NEW BT

BEARING AND DISTANCE TABLE:

A. N89 58 27E 300.00 FEET
B. N00 11 35W 300.00 FEET
C. N89 58 27E 300.00 FEET
D. N00 11 35W 300.00 FEET

REGISTERED
PROFESSIONAL
LAND SURVEYOR
Albert H. Gastaldi
OREGON
ALBERT H. GASTALDI
928



NARRATIVE:
THE PURPOSE OF THE SURVEY WAS TO SET THE CORNERS AND MARK THE LINES OF THE WEYERHAEUSER TIMBER COMPANY PROPERTY. THE CORNERS FOUND, SET AND PERPETUATED ARE ALL DESCRIBED IN THE CORNER AND REFERENCE COLUMN. THE BEARINGS ARE BASED ON AN HOUR ANGLE SOLAR TAKEN 600 FEET NORTH AND 300 FEET EAST FROM THE 1/4 CORNER COMMON TO SECTIONS 2 & 11. CLOSED TRAVERSE AND PROCEDURAL CHECKS WERE MADE ON ALL POINTS. A LEITZ SET-2 TOTAL STATION WAS USED TO MEASURE ALL ANGLES AND DISTANCES. ALL B.T.s ARE SCRIBED PER 1973 MANUAL OF INSTRUCTIONS UNLESS NOTED OTHERWISE. ALL MONUMENTS SET ARE STAMPED PER 1973 MANUAL OF INSTRUCTIONS WITH THE ADDITION OF THE TOWNSHIP AND RANGE. TREES DESIGNATED "REF" ARE NOT SCRIBED UNLESS NOTED OTHERWISE. ALL TREES HAVE A NAIL AND LS 928 TAG NEAR THE GROUND FACING THE CORNER. WHEN BEARINGS ARE SHOWN AS DEGREES AND MINUTES, THE BEARINGS WERE DETERMINED WITH A TRANSIT. BEARINGS ARE THE SAME BASIS AS MAP AND ARE TO THE HEAD OF THE NAIL DRIVEN THROUGH THE LS 928 TAG FACING THE CORNER. WHEN DEGREES ONLY ARE SHOWN THE BEARINGS WERE DETERMINED WITH A COMPASS WITH A DECLINATION OF 19 DEGREES EAST SET OFF. DISTANCES ARE TO THE HEAD OF A 20 PENNY NAIL DRIVEN IN THE SIDE AND CENTER OF THE TREE, UNLESS NOTED OTHERWISE. THE 1/4 CORNER COMMON TO SECTIONS 4 & 3 IS LOST. THE ORIGINAL FIELD NOTES STATE THE DISTANCE OF THE WEST LINE OF SECTION 3 WAS MEASURED AT 79.76 CHAINS AND THE 1/4 CORNER WAS SET AT 39.88 CHAINS OR ONE HALF MAY BETWEEN THE SECTION CORNERS. THE ORIGINAL PLAT STATES THE WEST LINE OF SECTION 3 WAS MEASURED AT 79.16 CHAINS, WITH THE SOUTH HALF MEASURED 40 CHAINS AND THE NORTH HALF MEASURED AT 39.16 CHAINS. I SET THE PROPORTIONED CORNER USING THE ORIGINAL PLAT. IT IS MY OPINION THAT THIS IS CORRECT. FILED WITH THE MAP IS A LETTER FROM THE BLM DATED APRIL 17, 1991. THERE OPINION IS THE SAME AS MINE BUT FOR OTHER REASONS. SEE LETTER.

- LEGEND:
- LINE CLEARED AND MARKED, SET VARIOUS DIAMETER REBAR IN FIVE FOOT LENGTHS, INTERVISIBLE, TO MARK LINE ONLY.
 - FOUND JACKSON CO SURVEYOR BRASS CAP
 - SET MONUMENT AS DESCRIBED IN CORNER NOTES
 - FD = FOUND MD = MOUND
 - REF = REFERENCE W FIR = WHITE FIR
 - FIR = DOUGLAS FIR M PINE = WHITE PINE
 - JCS BC = JACKSON COUNTY SURVEYOR BRASS CAP

GASTALDI AND ASSOCIATES
SURVEYING AND MAPPING
6091 REEDER ROAD
KLAMATH FALLS, OR 97603
503-882-8581
DRAWN BY: AHG
SURVEY BY: AHG & PB
DATE: MARCH 1991
SCALE: one inch = 300 feet