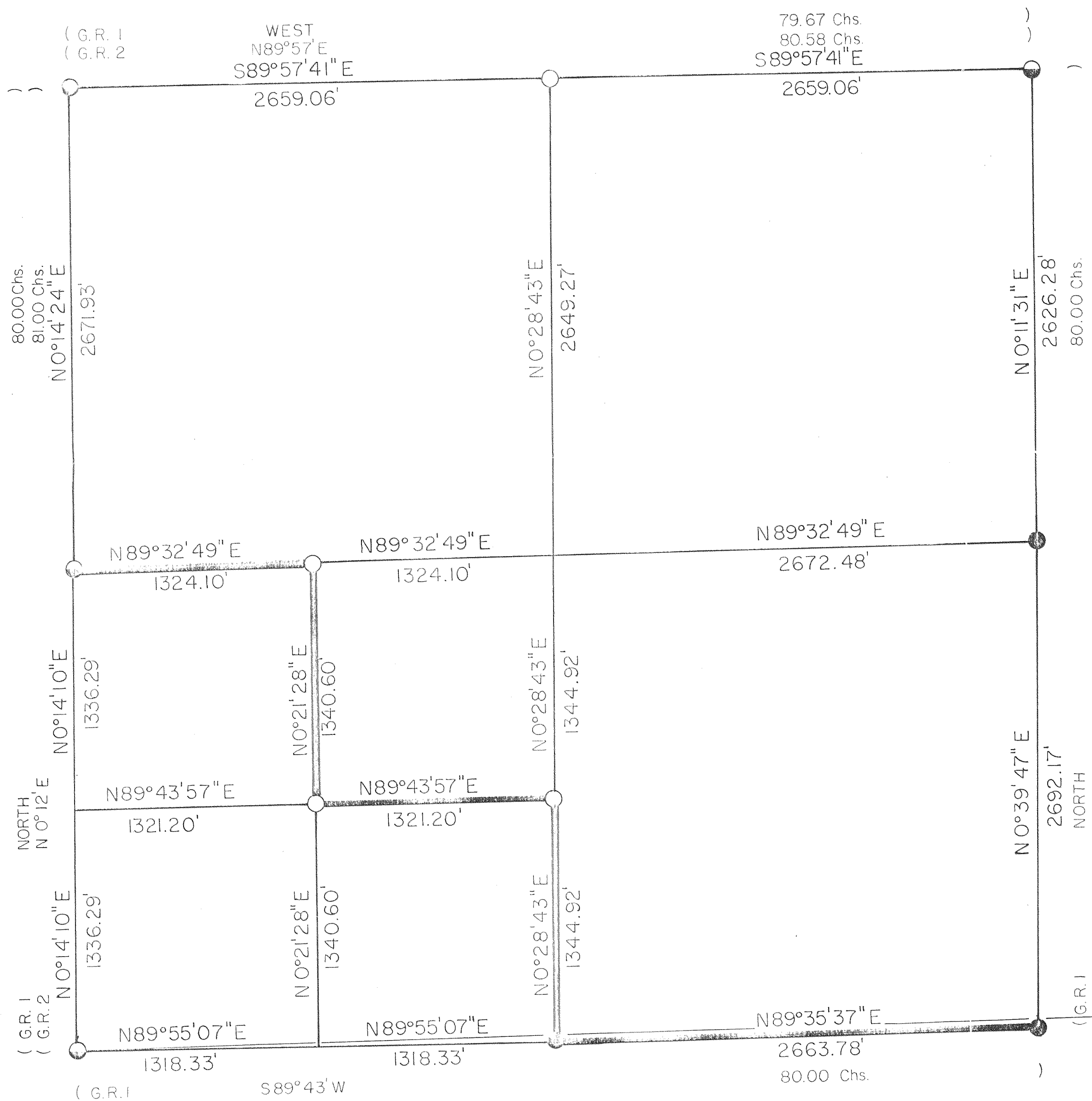
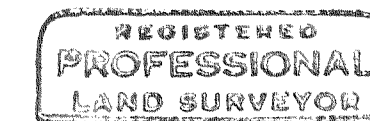


# S36 T37S R4W W.M.



## CERTIFICATE OF SURVEY

I, ARTHUR R. RAMBO, REGISTRATION No. 1086 REGISTERED PROFESSIONAL LAND SURVEYOR STATE OF OREGON, HEREBY CERTIFY THAT THIS MAP CORRECTLY REPRESENTS A SURVEY MADE BY ME OR UNDER MY DIRECTION IN CONFORMANCE WITH THE LAWS OF THE STATE OF OREGON.



*Arthur R. Rambo*



## LEGEND

- ⊕ FOUND TRIANGULATION STATION "ISABELLE"
- FOUND COUNTY MONUMENT
- ⊙ FOUND STANDARD B.L.M. MONUMENT
- SET 5/8" BY 30" REBAR WITH 2" ALUM. CAP
- LINE POSTED AND BLAZED THIS SURVEY
- G.R. 1 1857 GOVERNMENT RECORD
- G.R. 2 1985 GOVERNMENT RECORD GROUP No. 1251 & 1289

## SCALE

1" = 200'

## BASIS OF BEARING

U.S. GOVERNMENT SURVEY GROUP No. 1251 & 1289 FROM S.W. SECTION CORNER TO U.S.C. & G.S. TRIANGULATION STATION "ISABELLE"

## SURVEY BY

ARTHUR R. RAMBO  
P.O. BOX 550  
MEDFORD OR 97501

## DATE

APRIL 26, 1991

5-2-91

1  
2

12497

SURVEY NARRATIVE TO COMPLY WITH  
PARAGRAPH 209.250 O.R.S.

**SURVEY FOR:** MEDFORD CORPORATION  
P.O. BOX 550  
MEDFORD, OREGON 97501

**LOCATION:** SECTION 36 TOWNSHIP 37 SOUTH RANGE 4 WEST WILLAMETTE  
MERIDIAN, JACKSON COUNTY, OREGON.

**PURPOSE:** To establish corners and mark Medford Corporation boundaries within said Section 36, as shown on the plat to accompany this narrative.

**BASIS OF BEARING:** United States Dept. of Interior survey group number 1251 and 1289. Bearing from the Southwest corner of said Section 36 to the United States Coast and Geodetic Survey triangulation station "ISABELLE".

**PROCEDURE:** A search was made for corners which control said Section 36. The Southwest Corner, West One-Quarter Corner, Northwest Corner, and Northeast Corner had been reestablished by Bureau of Land Management Cadastral Surveyors, from original evidence or by proportionate measurement, under instructions of group number 1251 and 1289. The East One-Quarter Corner and South One-Quarter Corner had been reestablished by the Jackson County Surveyor in 1991 from original evidence. The Southeast Corner had been reestablished by the Jackson County Surveyor in 1964 from original evidence. We searched 3 man days for the North One-Quarter Corner and could find no evidence of this corner.

A traverse was ran tying to all existing corners found. A position was calculated for the North One-Quarter Corner and another 3 man days was spent searching for this corner with no evidence being found.

I then proceeded to subdivide Section 36 and establish interior corners as shown on the plat to accompany this narrative.

CORNERS SET THIS SURVEY

All measurements to bearing trees are to the center of tree at base unless otherwise stated. All bearing trees have a Brass washer marked LS 1086 nailed to the lower face.

One-Quarter Corner common to Section 25 and 36 Township 37 South Range 4 West. At the corner location I set a 5/8 by 30 inch rebar exposed 4 inches, with a 2 inch dia. Alum. Cap marked:

T37S R4W

S25

$\frac{1}{4}$  .

S36

LS 1086

**FROM WHICH:**

An 11 $\frac{1}{2}$  inch dia. madrona Bears N43°25'50"W 24.65 feet marked  $\frac{1}{4}$ S25 in upper face, BT in lower face.

A 12½ inch dia. Madrona Bears N12°33'57"W 37.24 feet marked  
¼S25 in upper face, BT in lower face.

A 14½ inch dia. Madrona Bears N89°35'22"E 9.07 feet marked  
¼S36 in upper face, Bt in lower face.

A16 inch dia. Madrona Bears S36°06'08"W 27.35 feet marked  
¼S36 in upper face, Bt in lower face.

Center West One-Sixteenth Corner Section 36. At the corner  
location I set a 5/8 by 30 inch dia. rebar exposed 2 inches,  
with a 2 inch dia. Alum Cap marked:

T37S R4W

S36

CW · 1/16

LS 1086

FROM WHICH:

A 6 inch dia. Madrona Bears N70°07'33"W 46.91 feet marked  
CW1/16S36 in upper face, BT in lower face.

A 19½ inch dia. Oak Bears N78°00'15"E 47.27 feet marked  
CW1/16S36 in upper face, BT in lower face.

South West One-Sixteenth Corner Section 36. At the  
corner location I Set a 5/8 by 30 inch rebar exposed 3  
inches, with a 2 inch dia. Alum. Cap marked:

T37S R4W

S36

SW · 1/16

LS 1086

FROM WHICH:

An 11 inch dia. Oak Bears N64°37'58"W 55.41 feet marked  
SW1/16S36 in upper face, BT in lower face.

An 11 inch dia. Oak Bears N83°43'01"E 37.37 feet marked  
SW1/16S36 in upper face, BT in lower face.

Center South One-Sixteenth Corner Section 36. At the corner  
location I set a 5/8 by 30 inch rebar exposed 2 inches with  
a 2 inch dia. Alum. Cap marked:

T37S R4W

S36

CS · 1/16

LS 1086

FROM WHICH:

A 12 inch dia. Madrona Bears S63°28'57"W 42.93 feet marked  
CS1/16S36 in upper face, BT in lower face.

A 10 inch dia. Madrona Bears N81°23'53"W 74.06 feet marked  
CS1/16S36 in upper face, BT in lower face.

\*\* RECEIVED \*\*

Date 5-2-91 By SK

This survey Consists of:

1 sheet(s) Map

2 page(s) Narrative

JACKSON COUNTY  
SURVEYOR

ARTHUR R. RAMBO

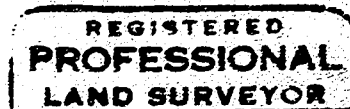
Registered Professional Land Surveyor

Oregon Certificate No. 1086

P. O. BOX 550

MEDFORD OR 97501

April 26, 1991



Arthur R. Rambo

