

SW 1/4 S17 T35S R4W W.M.

SURVEY FOR

BEAR BRANCH TREE FARMS
 ROUTE 2 BOX 851
 PRAIRIE CITY, OR. 97869

CERTIFICATE OF SURVEY

I, ARTHUR R. RAMBO, PLS 1086 STATE OF OREGON,
 HEREBY CERTIFY THAT THIS MAP CORRECTLY
 REPRESENTS A SURVEY MADE BY ME IN CONFORMANCE
 WITH THE LAWS OF THE STATE OF OREGON.

REGISTERED
 PROFESSIONAL
 LAND SURVEYOR

Arthur R. Rambo

OREGON
 JUNE 28, 1989
 ARTHUR R. RAMBO
 No. 1086

LEGEND

- FOUND STANDARD B.L.M. MONUMENT WITH B.T.'s
 - FOUND JACKSON CO. MONUMENT WITH B.T.'s
 - FOUND MONUMENT SET SURVEY No. 6860
 - FOUND MONUMENT SET SURVEY No. 7318
 - FOUND MONUMENT SET SURVEY No. 12236 WITH B.T.'s
 - SET 5/8" BY 30" REBAR WITH 2" ALUM. CAP
- LINES MARKED THIS SURVEY

() RECORD MEASUREMENT

SCALE

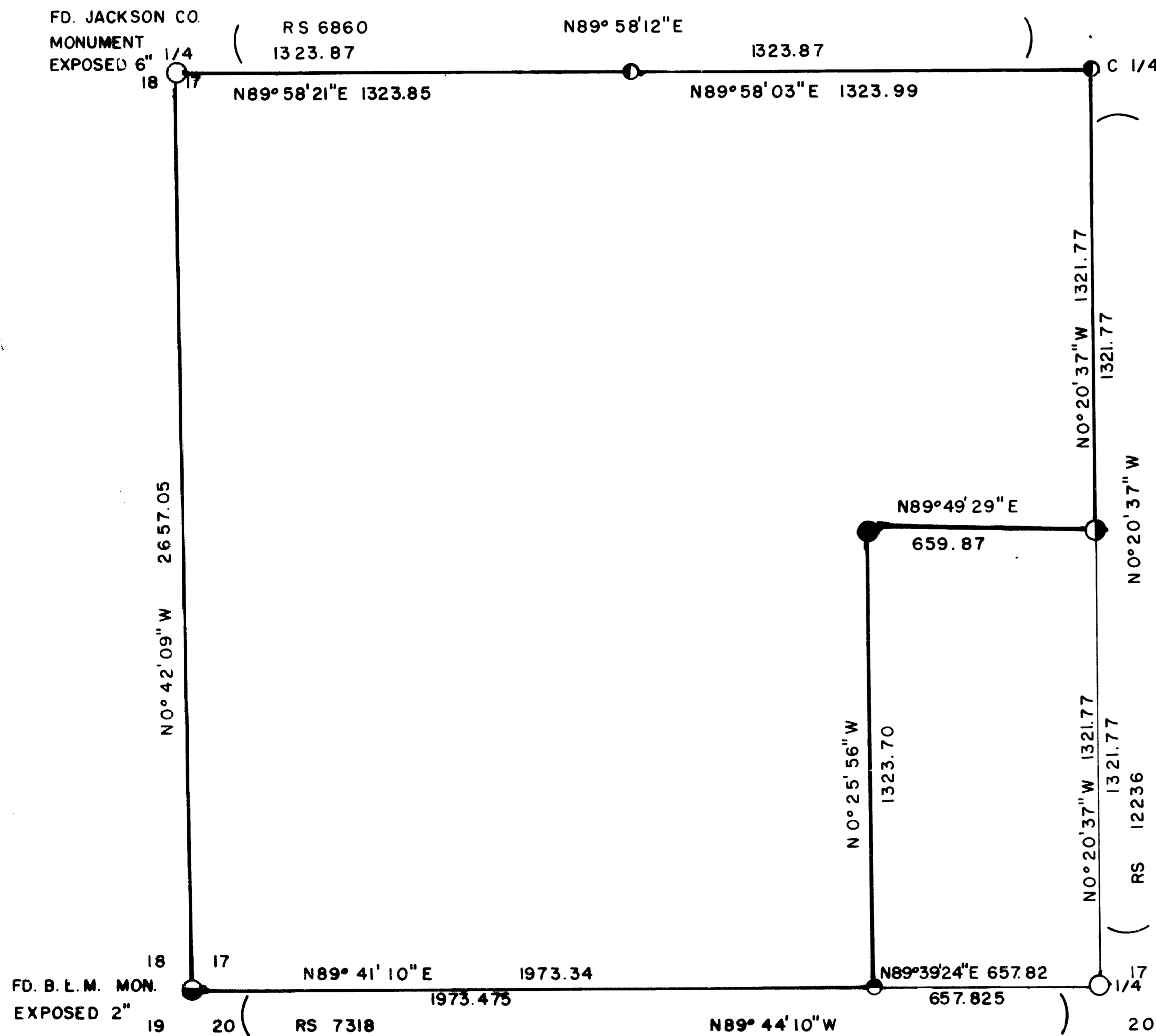
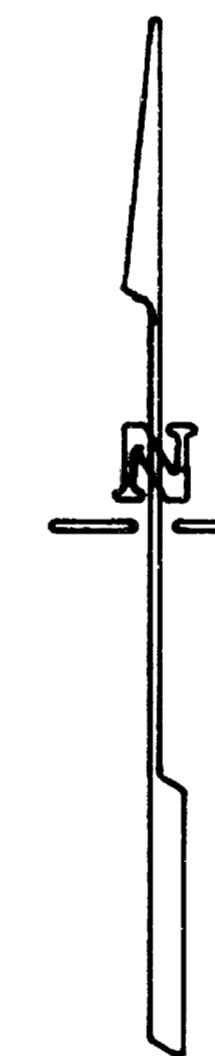
1" = 300'

DATE

NOVEMBER 10, 1990

BASIS OF BEARING

SURVEY No. 12236



Survey Narrative to Comply With
O.R.S. 209.250

Location: Southwest quarter Section 17 Township 35 South,
Range 4 West, Willamette Meridian, Jackson
County, Oregon.

Survey For: Bear Branch Tree Farms
Route 2 Box 851
Prairie City, Or. 97869

Survey By: Arthur R. Rambo
735 Vista Park Drive
Eagle Point, Or. 97524

Date: November 10, 1990

Basis of Bearing: Survey No. 12236 (N/S Centerline Section 17)

Purpose: To mark boundry of Bear Branch Tree Farms land
in the S.W.1/4 of said Section 17 as shown on
the plat to accompany this narrative.

Procedure: A closed traverse survey was performed beginning
at the South 1/4 corner from survey no.
12236, proceeding to the East-East 1/64 corner
Section 17&20 then to the Southwest corner, then
to the West 1/4 corner, then to the Centerwest
1/16 corner, then to the Center 1/4 corner
closing to survey No. 12236. The position for
the Center East Southwest 1/64 corner was
calculated. Then a traverse was run to set the
Center East Southwest 1/64 corner, beginning at
the East-East 1/64 corner Section 17&20 and closing
to the Centersouth 1/16 corner.

CORNERS FOUND AND ACCEPTED FOR CONTROL

All measurements to bearing trees are to
the center of tree at base unless otherwise
stated.

Center one-quarter corner Section 17 I found a
5/8" iron pin set survey number 6860.

Center South one-sixteenth corner Section 17. At
the corner location I found a monument set
survey number 12236, exposed 4 inches, marked:

T35S R4W
CS . 1/16
LS 1086

From which:

A 9" diameter Madrona bears S46°10'34"W
38.7 feet, marked CS1/16S17 in upper face BT
in lower face.

An 11" diameter Pine bears N16°30'46"E 19.1
feet, marked CS1/16S17 in upper face BT in
lower face.

One-quarter corner common to Section 17 and 20 I
found a Jackson County monument buried 11 inches
marked:

T35S R4W
17
1/4 S-- --
20
1974

From which:

A 21½" diameter Cedar bears S6°33'43"W 26.3 feet, with an unopened face.
A 24" diameter Madrona bears N38°22'13"E 67.0 feet, with an unopened face.

East-East 1/64 corner common to Section 17 and 20. At the corner location I found monument set survey number 7318 marked:

MOFFIT
944

Section corner common to Section 17, 18, 19, and 20. At the corner location I found a standard Bureau of Land Management monument, exposed 2 inches, marked:

T35S R4W
S18 S17

S19 S20
1982

From which:

A 10" diameter Oak bears S44°21'21"E 28.5 feet, with no scribes visible in chopped face.
A 12" diameter Fir bears S30°58'42"E 19.0 feet, unopened.
A 24" Oak bears S19°07'41"W 37.3 feet, with no scribes visible in chopped face.
A 14" diameter Fir bears S81°17'10"W 24.6 feet, unopened.
A 10" diameter Sugar Pine bears N28°36'18"W 25.5 feet, unopened.
A 10" diameter Fir bears N62°03'36"E 43.9 feet, unopened.
A 14" diameter Oak bears N71°46'39"E 48.5 feet, unopened.

One-quarter corner common to Section 17 and 18 I found a Jackson County monument, exposed 6 inches, marked:

T35S R4W
¼ 18 +17
COR
C.S.
1967

From which:

A 26" diameter Oak bears S6°59'23"W 55.0 feet, with chopped face.
An 18" diameter Sugar Pine bears S48°25'17"W 14.5 feet, unopened.
An 18" Ponderosa Pine bears S37°32'18"E 4.3 feet, unopened.

Centerwest one-sixteenth corner Section 17. At the corner location I found a 5/8" diameter iron pin set survey number 6860.

CORNERS SET THIS SURVEY

All measurements to bearing trees are to the center of tree at base. All bearing trees have a Brass washer stamped LS 1086 nailed to lower face of tree.

12290

Page 3 of 3

Center-East-Southwest 1/64 corner Section 17. At the corner location I set a 2" diameter Alum. cap on a 5/8" by 30" rebar, exposed 6 inches, marked:

T35S R4W
S17
1/64 C-E-SW
LS 1086

From which:

An 8" diameter Oak bears N34°40'12"W 48.2 feet, marked C-E-SW1/64S17 in upper face BT in lower face.
An 8" diameter Oak bears N74°52'16"E 12.4 feet, marked C-E-SW1/64S17 in upper face BT in lower face.

