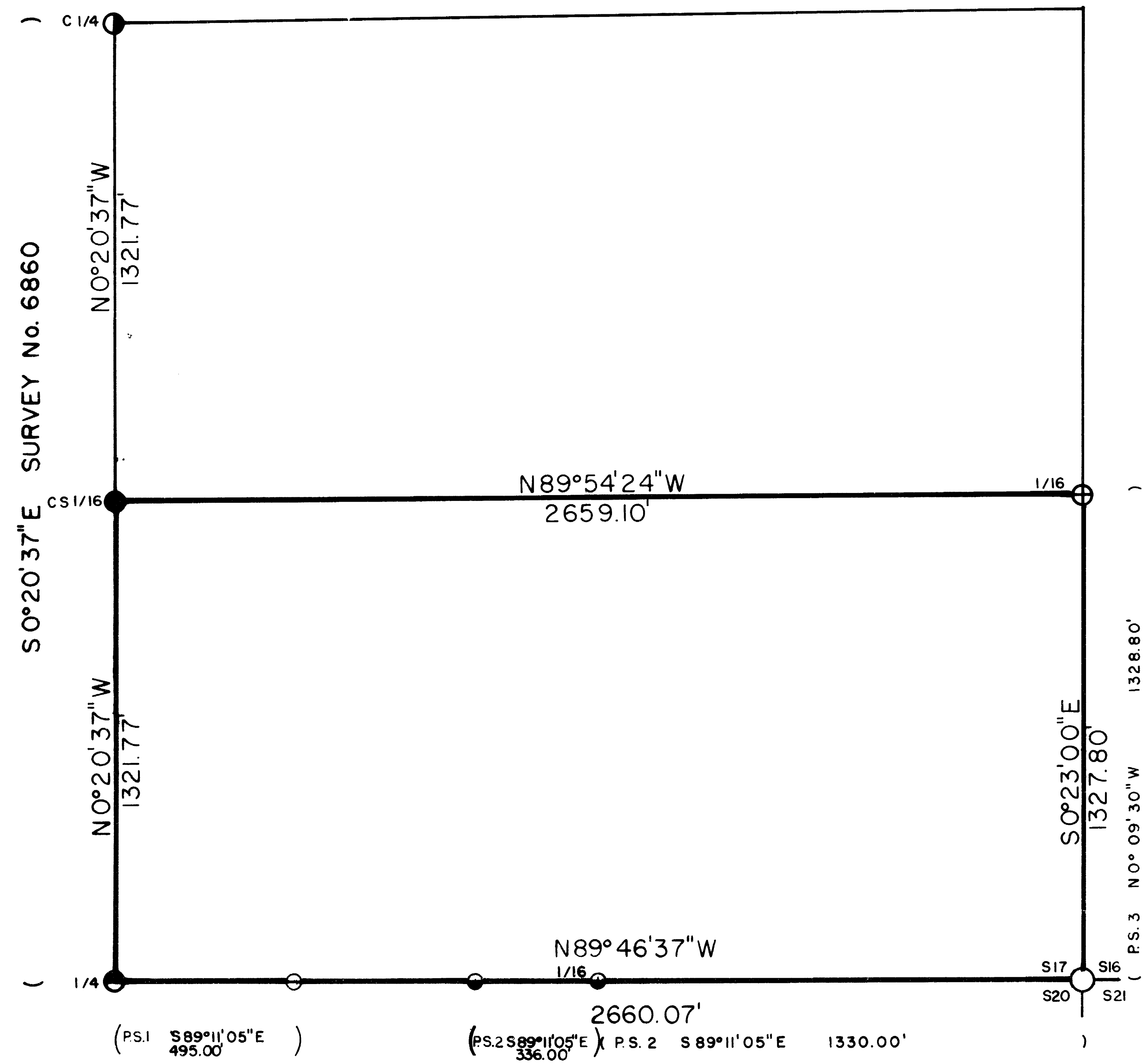


SE ¼ S17 T35S R4W W.M.



CERTIFICATE OF SURVEY

I, ARTHUR R. RAMBO, REGISTRATION No. 1086 REGISTERED PROFESSIONAL LAND SURVEYOR STATE OF OREGON, HEREBY CERTIFY THAT THIS MAP CORRECTLY REPRESENTS A SURVEY MADE BY ME OR UNDER MY DIRECTION IN CONFORMANCE WITH THE LAWS OF THE STATE OF OREGON.

REGISTERED
PROFESSIONAL
LAND SURVEYOR
Arthur R. Rambo
OREGON
MAY 22 1894
ARTHUR R. RAMBO
No. 1086

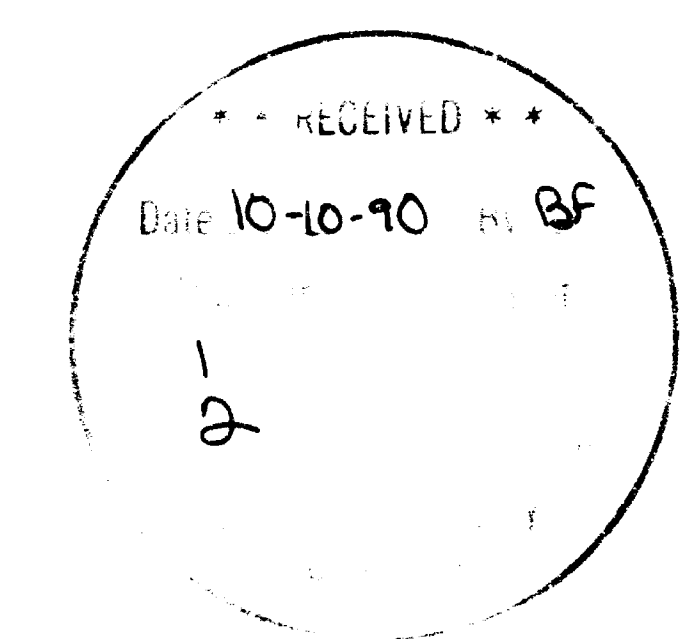
LEGEND

- FOUND STANDARD B.L.M. MONUMENT
- FOUND COUNTY MONUMENT
- ⊙ FOUND MONUMENT SET SURVEY No. 6860
- ⊕ FOUND MONUMENT SET SURVEY No. 4183
- SET 5/8" BY 30" REBAR WITH 2" ALUM. CAP
- ⊙ FOUND MONUMENT SET SURVEY No. 9795
- ⊙ FOUND MONUMENT SET SURVEY No. 7318
- PS. 1 PRIVATE SURVEY No. 7318
- PS. 2 PRIVATE SURVEY No. 9795
- PS. 3 PRIVATE SURVEY No. 4183
- LINES POSTED AND BLAZED THIS SURVEY

SCALE
1"=300'

DATE
OCT. 9, 1990

BASIS OF BEARING
SURVEY No. 6860



Survey Narrative to Comply With
O.R.S. 209.250

Location: Section 17 Twpnship 35 South, Range 4 West,
Willamette Meridian, Jackson County, Oregon.

Survey For: Medford Corporation
P.O. Box 550
Medford, Oregon 97501

Survey By: Arthur R. Rambo
735 Vista Park Drive
Eagle Point, Oregon 97524

Date: October 9, 1990

Basis of Bearing: Survey No. 6860 (N/S Centerline Section 17)

Purpose: To mark and post the boundaries of Medco land in
the South half of the Southeast quarter of said
Section 17 as shown on the plat to accompany
this narrative.

Procedure: A closed traverse survey was performed,
beginning at the center $\frac{1}{4}$ corner, proceeding to
the South $\frac{1}{4}$ corner, then to the Southeast
Section corner, then to the South $\frac{1}{16}$ corner
common to Section 16 and 17, then West closing
the survey back to the Center $\frac{1}{4}$ corner. The
Centersouth $\frac{1}{16}$ corner was calculated and
set by proportionate measurement. Lines marked
and posted are shown on the plat to accompany
this narrative.

CORNERS FOUND AND ACCEPTED FOR CONTROL

All measurements to bearing trees are to
the center of tree at base unless otherwise
stated.

Center one-quarter corner Section 17 I found a
5/8" iron pin set survey number 6860.

One-quarter corner common to Section 17 and 20 I
found a Jackson County monument buried 11 inches
marked:

T35S R4W
17
 $\frac{1}{4}$ S-- .--
20
1974

From which:

A $21\frac{1}{2}$ inch Dia. Cedar Bears S6°33'43"W 26.3
feet, with an unoprned face.
A 24 inch Dia. Madrona Bears N38°22'13"E
67.0 feet marked with an unopened face.

Section corner common to Sections 16, 17, 20,
and 21. At the corner location I found a
standard Bureau of Land Management monument at
ground level marked:

T35S R4W
 S17|S16
 S20|S21

1961

From which:

A 2½ inch Dia. pipe exposed 8 inches Bears North and against monument.
 A 25½ inch Dia. Oak Bears S9°42'56"E 25.2 feet, with unopened face.
 A 23 inch Dia. Fir Stump Bears S87°54'07"W 58.5 feet, with unopened face.
 A 16½ inch Dia. Oak Bears N24°23'14"W 34.4 feet with rotted face no scribes visible.
 A 23 inch Dia. Oak Bears N71°34'40"E 36.3 feet with unopened face.

South one-sixteenth corner common to Section 17 and 16. At the corner location I found a 5/8" Iron Pin with a tag marked R.S. 705 wired to pin.

From which:

A 14½ inch Dia. Pine stub Bears S24°41'29"E 23.4 feet with opened face no scribes visible.
 A 20½ inch Dia. Fir Snag Bears S52°11'04"W 34.4 feet with unopened face.

CORNERS SET THIS SURVEY

All measurements to bearing trees are to the center of tree at the base unless otherwise stated. All bearing trees have a Brass washer stamped LS 1086 nailed to the lower face of tree.

Center South one-sixteenth corner Section 17. At the corner location I set a 1½ inch diameter Alum. cap on a 5/8" by 30" rebar exposed 4 inches marked:

T35S R4W
 CS . 1/16

LS 1086

From which:

A 9 inch diameter Madrona Bears S46°10'34"W 38.7 feet, marked CS1/16S17 in upper face BT in lower face.
 An 11 inch diameter Pine Bears N16°30'46"E 19.1 feet, marked CS1/16S17 in upper face BT in lower face.

** RECEIVED **

Date 10-10-90 By AR

This survey Consists of:

1 sheet(s) Map

2 page(s) Narrative

JACKSON COUNTY
 SURVEYOR

REGISTERED
 PROFESSIONAL
 LAND SURVEYOR

Arthur R. Rambo
 OREGON
 JULY 30, 1976
 ARTHUR R. RAMBO
 No. 1086