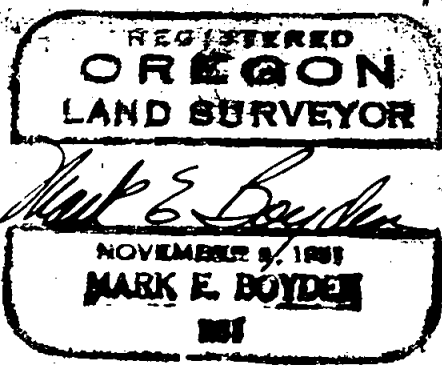
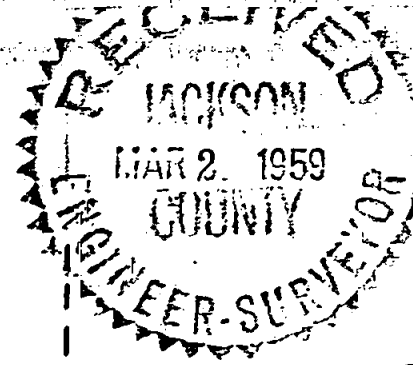


1216
9171

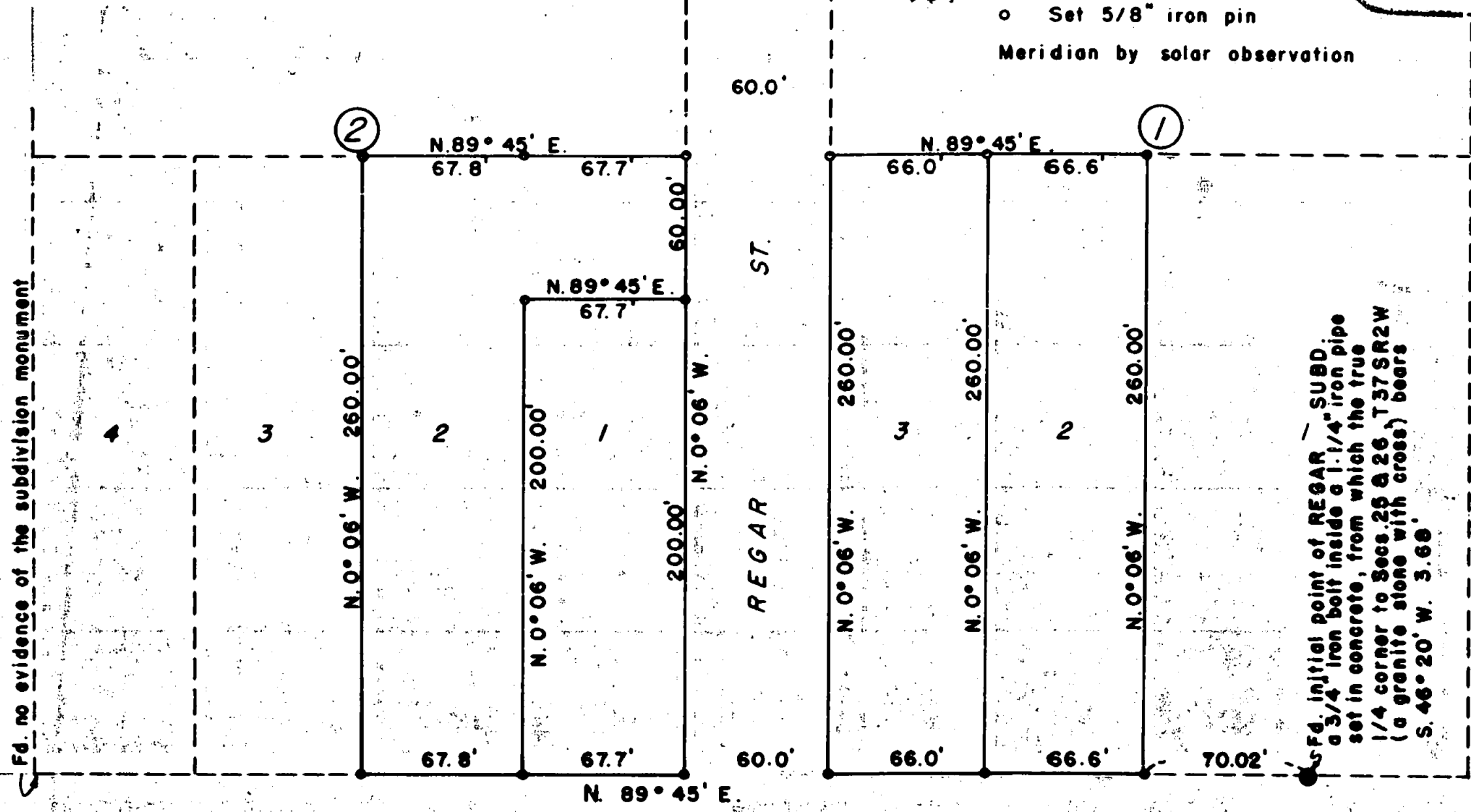
Resurvey of Lots 2 & 3, Block 1 & Lots 1 & 2, Block 2 of
REGAR SUBDIVISION (not officially recorded)
Located in Secs. 25 & 26, T.37S.R.2W., W.M.
By: Mark E. Boyden Dec. 1957.

For: John J. McCann, Martin F. Clogston & Wayne A. Wilson



Scale: 1" = 60'

o Set 5/8" iron pin
Meridian by solar observation



STATE HIGHWAY NO. 238

the lines are coincident with several interior subdivision fence lines and agree with the original boundaries as were known to exist by the older area residents.

Monumented the tract as shown on the map to accompany this report.

December 1957

REGISTERED
OREGON
LAND SURVEYOR

Mark E. Boyden

NOVEMBER 9, 1961
MARK E. BOYDEN
281

RECEIVED
JACKSON
MAR 2 1959
COUNTY
ENGINEER-SURVEYOR

Survey Narrative to Comply With Paragraph 209.250
Oregon Revised Statutes

FOR: John J. McCann
Martin F. Clogston
Wayne A. Wilson

PURPOSE: To re-monument the boundaries of Lots 2 and 3 of Block 1 and Lots 1 and 2 and the South 200 feet of Lot 1 of Block 2 of REGAR SUBDIVISION (not officially recorded) located in Sections 25 and 26, Township 37 South, Range 2 West.

PROCEDURE: Regar Subdivision was originally surveyed in 1928 and a plat filed with the County Clerk. This plat was not officially recorded, partly because the surveyor refused to use the true re-established quarter corner to Sections 25 and 26 for the starting point of the Subdivision. In order to circumvent this official recording, a deed of dedication was filed in Jackson County Deed Records Volume 172, Page 545, describing each lot and block of the Subdivision, and making particular mention that the 1/4 corner to Sections 25 and 26 was a 1" iron pin set in concrete, rather than the true 1/4 corner which is marked by a granite stone with cross.

Because of this peculiar set of circumstances, it is apparent that to survey lots within Regar Subdivision as described, one must use the iron pin described as the initial point, bearing in mind, however, that the outside boundaries of the Subdivision must give-or-take to property boundaries described from the true 1/4 corner.

Unfortunately, a survey made in 1948, being Recorded Survey No. 111, was run according to the record plat of REGAR SUBDIVISION but was measured from the true quarter corner, instead of the iron pin initial point. The pipe monuments found as set on the 1948 survey for interior lot corners were disregarded and considered incorrect on this survey.

An extensive search was made for the original Subdivision corner stakes but the initial point monument was the only definite Subdivision corner found. However, if the Subdivision corners are replaced according to the courses and distances indicated by the plat,