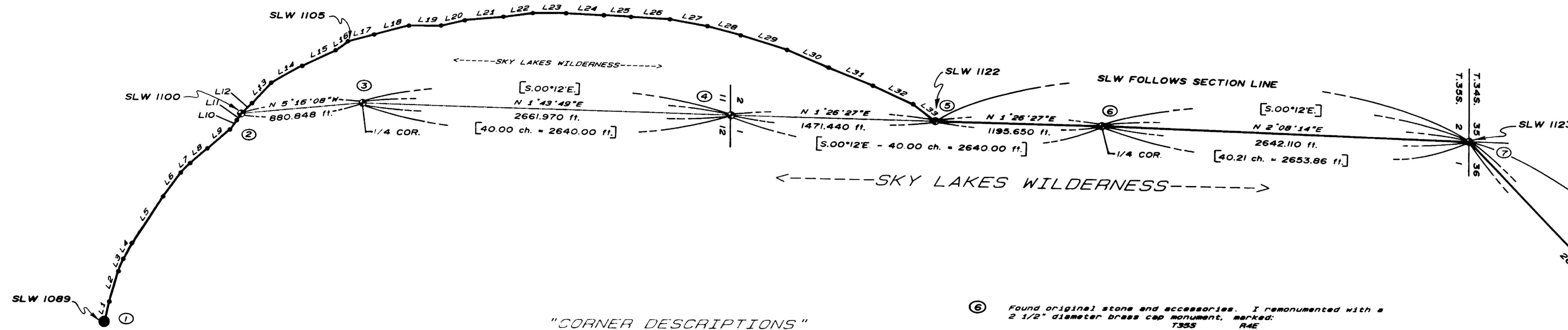
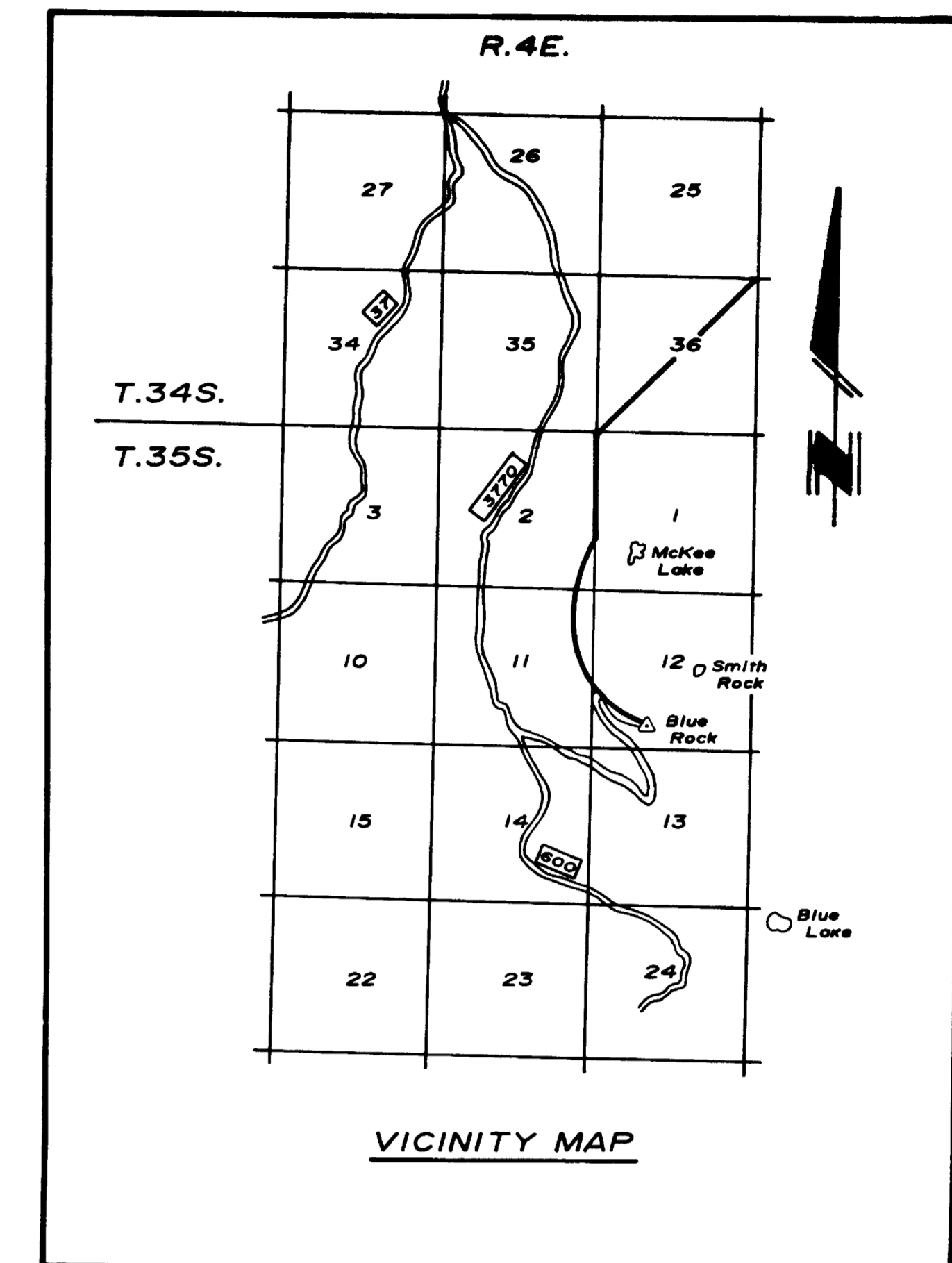
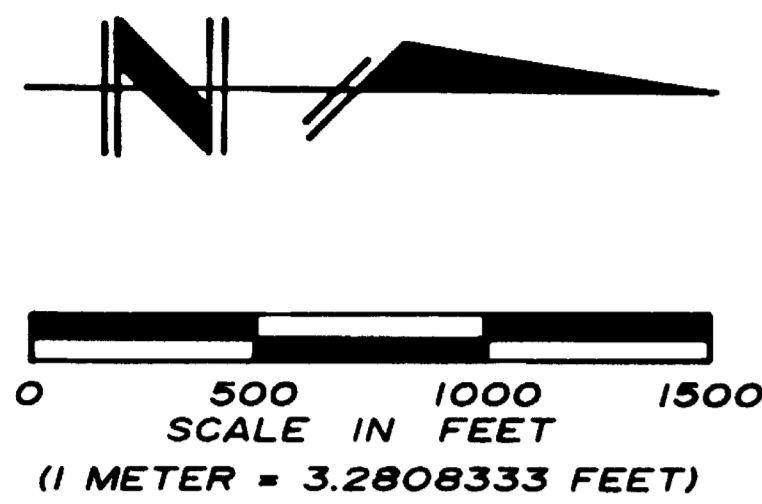


# MAP OF SURVEY

TO COMPLY WITH PARAGRAPH 209.250  
OREGON REVISED STATUTES

--FOR--

ROGUE RIVER NATIONAL FOREST  
333 WEST 8th ST., P.O. BOX 520  
MEDFORD, OREGON 97501



### "CORNER DESCRIPTIONS"

- ① Found a 2 1/2" diameter brass cap monument set in cement, marked: USFS CONTROL. GPS 355 4E 12 1 9 8 6. NOTE: This corner is Sky Lakes Wilderness No. 1089.
- ② Set a 2 1/2" diameter brass cap monument, marked: SKY LAKES WILDERNESS BDRY. NON. 1100 1989 LS 1071.
- ③ Found original stone and accessories. I remonumented with a 2 1/2" diameter brass cap monument, marked: T 35 S 1/4 S11 S12 1989 LS 1071. From which, Original Accessories: A 30" diameter hemlock with a broken top bears S.53°05'E., 34.60 feet distance, with scribing 1/4S BT visible. A hemlock stump, size indeterminate bears N.55°50'W., 19.90 feet distance, with no marks visible. New Accessories: A 10" diameter hemlock bears S.16°52'E., 32.25 feet distance, scribed 1/4S12LS1071 BT. A 7" diameter hemlock bears N.43°31'W., 12.55 feet distance, scribed X BT.
- ④ Found original stone and accessories. I remonumented with a 2 1/2" diameter brass cap monument, marked: T355 R4E 52 1 51 1989 LS 1071. From which, Original Accessories: A broken & decayed fir stump bears S.56°21'E., 8.75 feet distance. A broken & decayed fir stump bears S.56°43'W., 11.80 feet distance, with reverse scribe BT visible on a loose piece of wood lying alongside. A 33" diameter hemlock bears N.68°06'W., 22.10 feet distance, with a healed blaze. A broken & decayed fir stump bears N.09°21'E., 33.00 feet distance, with no marks visible. New Accessories: A 48" diameter fir bears N.35°36'E., 24.90 feet distance, scribed T355R4E51LS1071 BT. A 36" diameter fir bears S.44°10'E., 42.80 feet distance, scribed T355R4E51LS1071 BT. A 25" diameter hemlock bears S.44°25'W., 19.85 feet distance, scribed T355R4E51LS1071 BT. A 5/8-inch diameter iron pin with a 1-inch diameter aluminum cap marked USFS PC bears S.39°39'E., 56.57 feet distance.
- ⑤ Set a 2 1/2" diameter brass cap monument, marked: SKY LAKES WILDERNESS BDRY. NON. 1123-A 1989 LS 1071. From which, Original Accessories: A 12" diameter fir bears N.85°01'W., 31.20 feet distance, scribed SLWB 1123-A BT. A 17" diameter fir bears S.42°45'E., 3.80 feet distance, scribed SLWB 1123-A BT.
- ⑥ Found original stone and accessories. I remonumented with a 2 1/2" diameter brass cap monument, marked: T345 R4E 52 1 51 1989 LS 1071. From which, Original Accessories: A 44" diameter fir bears N.45°04'E., 15.80 feet distance, with a healed blaze. A 40" diameter dead & broken fir bears S.37°57'E., 19.00 feet distance, with fragmentary scribing visible. A 51" diameter fir bears S.46°27'W., 45.45 feet distance, with a healed blaze. New Accessories: An 11-inch diameter fir bears S.14°57'E., 28.50 feet distance, scribed T355R4E51LS1071 BT. A 14-inch diameter fir bears N.88°32'W., 8.20 feet distance, scribed T355R4E51LS1071 BT. NOTE: This section corner is Sky Lakes Wilderness No. 1123.
- ⑦ Set a 2 1/2" diameter brass cap monument, marked: SKY LAKES WILDERNESS BDRY. NON. 1123-B 1989 LS 1071. From which, Original Accessories: A 12" diameter fir bears N.85°01'W., 31.20 feet distance, scribed SLWB 1123-B BT. A 17" diameter fir bears S.27°32'E., 18.55 feet distance, scribed SLWB 1123-B BT.
- ⑧ Found a standard Jackson County Surveyor monument, marked: JACKSON COUNTY T345 R4E 25 1 36 1976. From which, Original Accessories: A 5" diameter yew bears S.52°50'W., 10.55 feet distance, with scribing 4ES38BT visible. A 35" diameter spruce bears N.72°35'W., 18.00 feet distance, with a healed blaze. An 18" diameter fir bears N.80°21'E., 33.50 feet distance, with a healed blaze. A root hole, with a dead and down fir alongside, bears S.58°36'E., 9.20 feet distance, with scribing S31 visible on down fir. An 8" diameter hemlock bears S.31°38'E., 26.20 feet distance, with a healed blaze. NOTE: This corner is Sky Lakes Wilderness No. 1124.

### "LEGEND"

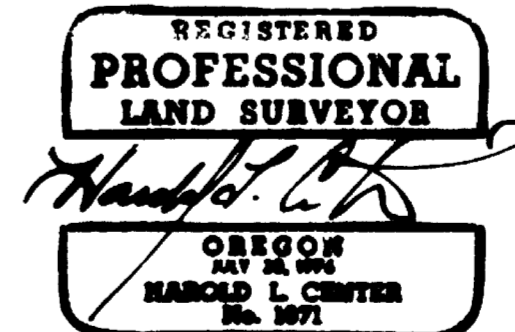
- Set 2 1/2" dia. G.I.P. with 2 1/2" dia. brass cap
- Found 2 1/2" dia. brass cap set in cement (GPS point)
- Set 3/8" dia. iron pin with 1" dia. aluminum cap marked with Sky Lakes Wilderness Bdry & the angle point no.
- ◇ Found County Surveyor brass cap monument
- Sky Lakes Wilderness Boundary Posted this survey with 6" aluminum posts & metal 27-6a Wilderness Bdry signs
- Calculated line from traverse survey
- [ ] Gov't Record—Rufus S. Moore Contract No. 504 dated May 27, 1884

### "LINE TABLE"

No.	Direction	Length in Feet
<b>(SLW No. 1089)</b>		
L1	N76°09'18"W	150.340
L2	N52°08'36"W	309.020
L3	N68°12'10"W	98.350
L4	N61°18'34"W	189.340
L5	N58°12'58"W	408.370
L6	N59°32'30"W	214.480
L7	N58°38'33"W	292.460
L8	N40°31'48"W	160.540
L9	N40°30'17"W	232.010
L10	N52°26'51"W	86.200
L11	N58°46'31"W	52.500
L12	N49°10'06"W	111.980
L13	N46°12'00"W	201.940
L14	N58°36'01"W	252.920
L15	N59°34'59"W	281.920
L16	N35°57'01"W	197.180
L17	N14°53'44"W	259.960
L18	N14°57'49"W	259.960
L19	N00°14'50"E	238.010
L20	N12°55'35"W	178.660
L21	N8°51'32"W	213.410
L22	N7°19'52"W	243.510
L23	N00°04'42"E	242.580
L24	N0°58'08"E	272.460
L25	N3°15'10"E	199.430
L26	N9°28'28"E	290.440
L27	N10°34'51"E	272.310
L28	N14°48'58"E	247.950
L29	N3°11'07"E	353.500
L30	N23°18'35"E	323.650
L31	N62°05'10"E	350.120
L32	N38°43'26"E	201.320
<b>(SLW No. 1100)</b>		
L1	N76°09'18"W	150.340
L2	N52°08'36"W	309.020
L3	N68°12'10"W	98.350
L4	N61°18'34"W	189.340
L5	N58°12'58"W	408.370
L6	N59°32'30"W	214.480
L7	N58°38'33"W	292.460
L8	N40°31'48"W	160.540
L9	N40°30'17"W	232.010
L10	N52°26'51"W	86.200
L11	N58°46'31"W	52.500
L12	N49°10'06"W	111.980
L13	N46°12'00"W	201.940
L14	N58°36'01"W	252.920
L15	N59°34'59"W	281.920
L16	N35°57'01"W	197.180
L17	N14°53'44"W	259.960
L18	N14°57'49"W	259.960
L19	N00°14'50"E	238.010
L20	N12°55'35"W	178.660
L21	N8°51'32"W	213.410
L22	N7°19'52"W	243.510
L23	N00°04'42"E	242.580
L24	N0°58'08"E	272.460
L25	N3°15'10"E	199.430
L26	N9°28'28"E	290.440
L27	N10°34'51"E	272.310
L28	N14°48'58"E	247.950
L29	N3°11'07"E	353.500
L30	N23°18'35"E	323.650
L31	N62°05'10"E	350.120
L32	N38°43'26"E	201.320
<b>(SLW No. 1105)</b>		
L1	N76°09'18"W	150.340
L2	N52°08'36"W	309.020
L3	N68°12'10"W	98.350
L4	N61°18'34"W	189.340
L5	N58°12'58"W	408.370
L6	N59°32'30"W	214.480
L7	N58°38'33"W	292.460
L8	N40°31'48"W	160.540
L9	N40°30'17"W	232.010
L10	N52°26'51"W	86.200
L11	N58°46'31"W	52.500
L12	N49°10'06"W	111.980
L13	N46°12'00"W	201.940
L14	N58°36'01"W	252.920
L15	N59°34'59"W	281.920
L16	N35°57'01"W	197.180
L17	N14°53'44"W	259.960
L18	N14°57'49"W	259.960
L19	N00°14'50"E	238.010
L20	N12°55'35"W	178.660
L21	N8°51'32"W	213.410
L22	N7°19'52"W	243.510
L23	N00°04'42"E	242.580
L24	N0°58'08"E	272.460
L25	N3°15'10"E	199.430
L26	N9°28'28"E	290.440
L27	N10°34'51"E	272.310
L28	N14°48'58"E	247.950
L29	N3°11'07"E	353.500
L30	N23°18'35"E	323.650
L31	N62°05'10"E	350.120
L32	N38°43'26"E	201.320
<b>(SLW No. 1122)</b>		
L1	N76°09'18"W	150.340
L2	N52°08'36"W	309.020
L3	N68°12'10"W	98.350
L4	N61°18'34"W	189.340
L5	N58°12'58"W	408.370
L6	N59°32'30"W	214.480
L7	N58°38'33"W	292.460
L8	N40°31'48"W	160.540
L9	N40°30'17"W	232.010
L10	N52°26'51"W	86.200
L11	N58°46'31"W	52.500
L12	N49°10'06"W	111.980
L13	N46°12'00"W	201.940
L14	N58°36'01"W	252.920
L15	N59°34'59"W	281.920
L16	N35°57'01"W	197.180
L17	N14°53'44"W	259.960
L18	N14°57'49"W	259.960
L19	N00°14'50"E	238.010
L20	N12°55'35"W	178.660
L21	N8°51'32"W	213.410
L22	N7°19'52"W	243.510
L23	N00°04'42"E	242.580
L24	N0°58'08"E	272.460
L25	N3°15'10"E	199.430
L26	N9°28'28"E	290.440
L27	N10°34'51"E	272.310
L28	N14°48'58"E	247.950
L29	N3°11'07"E	353.500
L30	N23°18'35"E	323.650
L31	N62°05'10"E	350.120
L32	N38°43'26"E	201.320

**PURPOSE AND PROCEDURE**  
The purpose of this survey is to mark & post a portion of the Sky Lakes Wilderness Boundary established by the Oregon Wilderness Act of June 26, 1984. The legal description of the Sky Lakes Wilderness is as shown on the map dated September 1986 on file in the office of the Chief of the USDA Forest Service as generally described in Public Law 98-328. This survey marks the portion of the Sky Lakes Wilderness Boundary between Angle Points 1089-1124 as described on pages 41-43, Sky Lakes Wilderness Description. The Public Land Survey System corner points and Topographic Cells were utilized where called for. It must be noted that the courses as described in the Sky Lakes Wilderness Description were digitized off of Quad Sheets and do not necessarily match the field survey. As described in the Wilderness Description page 41, I followed the north-easterly edge of the road prism for Forest Road 3770 and established angle points No. SLW 1089 - SLW 1100. Record bearing and distances were used between SLW No. 1100 - 1102. The elevation at SLW No. 1100 did not match the elevation as described in the Wilderness Description, page 42. Following the ridge and utilizing the record bearing and distances as described on page 42, I used a broken boundary adjustment for a best-fit solution for the boundary between Angle Points 1105 - 1122. The adjusted courses fit the topographic calls. All necessary one-quarter and section corners were recovered and remonumented or maintained as described in "Corner Descriptions."

**EQUIPMENT**  
Equipment utilized throughout this survey includes a Wild T-2 Theodolite, a Sokkisha Red 2L Electronic Distance Meter, and a Pathfinder G.P.S. receiver.



I, Harold L. Center, Registered Professional Land Surveyor, Oregon Certificate No. 1071, hereby certify that this plat correctly represents a survey made by me or under my direct supervision in conformance with the laws of the state of Oregon at the request of the United States Forest Service.

NOTE: This survey began on June 29, 1989, and was completed on April 9, 1990.

RECEIVED  
Date: 5-17-90 By: [Signature]  
This survey consists of 1 sheet(s) Map 0 02(s) Narrative JACKSON COUNTY SURVEYOR

U.S. DEPARTMENT OF AGRICULTURE  
FOREST SERVICE  
REGION 6 - ROGUE RIVER NATIONAL FOREST  
DEPENDENT RESURVEY  
AND  
ESTABLISHMENT OF A PORTION OF THE  
SKY LAKES WILDERNESS BOUNDARY  
SECTIONS 1, 2, 11 & 12, T.35S., R.4E., W.M.  
SECTION 36, T.34S., R.4E., W.M.  
JACKSON COUNTY, OREGON  
PROJECT NO. 88-32

REVIEWED BY: [Signature] DATE: 5/1/90  
APPROVED BY: [Signature] DATE: 5/1/90

34-4E (91-2) T.L. 100  
35-4E (91-2) T.L. 100