

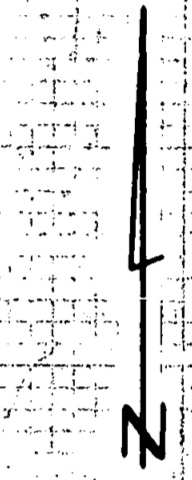
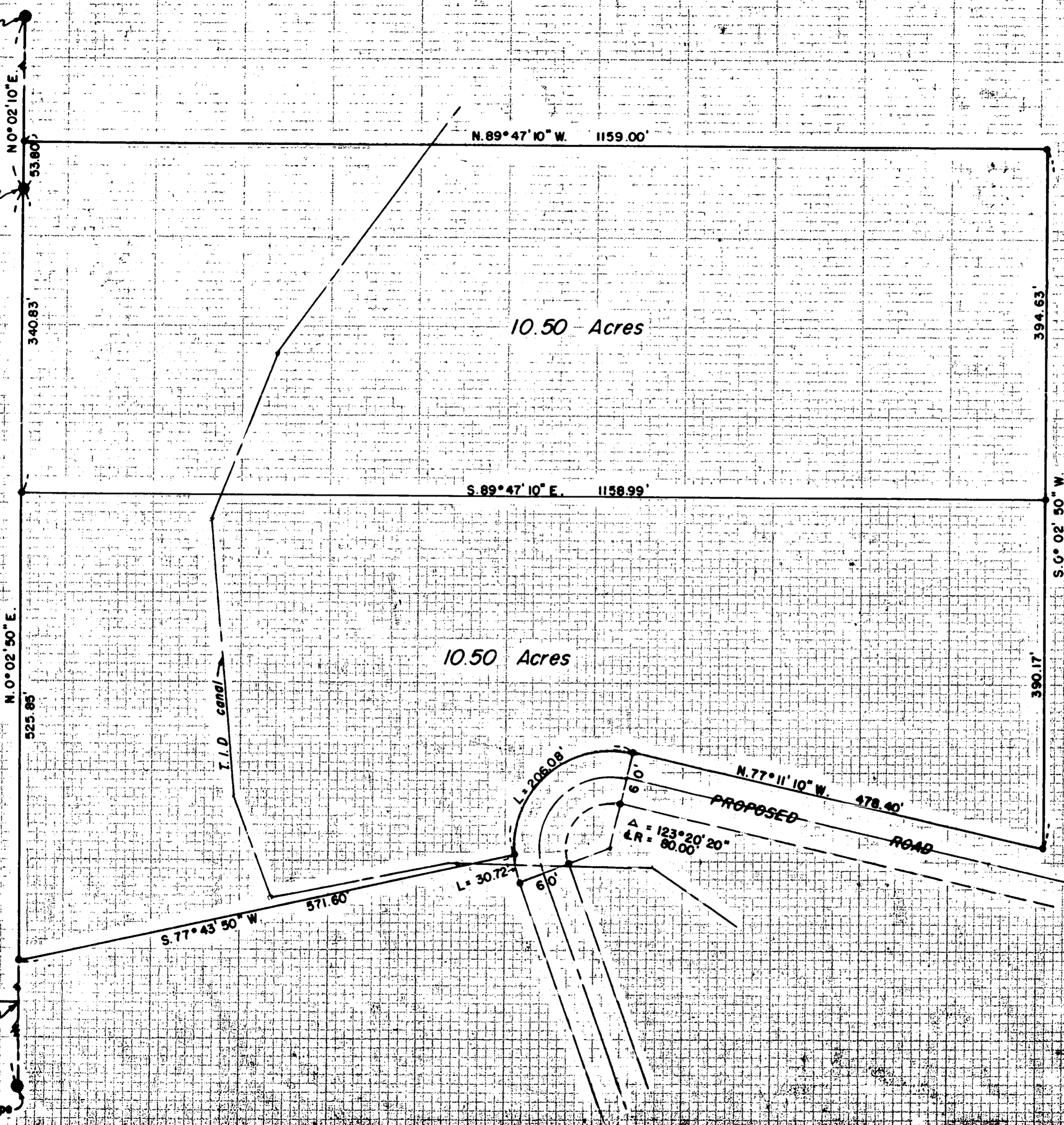
Survey For  
OSCAR GYSIN  
Located in D.L.C. No. 55  
& Sec. 35, T.37S.R.1W, W.M.  
By: Mark E. Boyden  
Feb. 1959.

N.E. cor.  
D.L.C. No. 56  
Set 1-1/2" iron  
pipe

N.W. cor.  
D.L.C. No. 55  
Set 1-1/2" iron  
pipe

S.E. cor. D.L.C.  
No. 56  
Fd. no evidence  
of the orig. cor.

S.W. cor. D.L.C.  
No. 55  
Set 1-1/2" iron pipe



Scale: 1" = 100'

- Re-established Gov't. corner
- Set 5/8" iron pin

REGISTERED  
OREGON  
LAND SURVEYOR

*Mark E. Boyden*  
NOVEMBER 9, 1981  
MARK E. BOYDEN  
281



Survey Narrative to Comply With Paragraph 209.250,  
Oregon Revised Statutes

FOR: Oscar Gysin

PURPOSE: To monument and describe two parcels of 10.50 acres each abutting the East line of DLC #56, Township 37 South, Range 1 West, and the remaining lines to be located as directed by the owner.

PROCEDURE: Traversed from a temporary location of the Southwest corner of DLC #55 Northerly to the South boundary of Section 26. Thence traversed Westerly to the corner to Sections 26, 27, 34 and 35. This Section corner is marked by a granite stone with the section numbers marked in the 4 quadrants and center punched. This monument has been the accepted corner for many years and is the monument used for corner in the recorded plats of FAIR OAKS ORCHARD TRACTS (1910) and MONITOR ORCHARDS (1911). From said Section corner traversed Easterly to a 3/4" galvanized iron pipe found for the 1/4 corner to Sections 26 and 35, from which pipe the remains of an Oak Tree agrees with the location of the original witness tree.

From this basic information, theoretical positions for the Southeast and Northeast corners of DLC #56 and the Northwest and Southwest corners of DLC #55 were computed.

From these theoretical positions, stump and root remains of the original witness trees were found to verify the corner locations for the Northwest and Southwest corners of DLC #55 (See official re-establishment records).

At the Northeast corner of DLC #56, the one reported witness tree was found, but the scribe marks were not legible due to the badly rotted center portion of the tree. I then calculated the location of the original Northeast corner of DLC #56 from said witness tree and from the aforementioned section line and DLC line traverses, calculated the intersection of the East line of DLC #56 with the South line of Section 26. It was found that the original corner location falls North 0° 02' 10" East 3.04 feet from this