

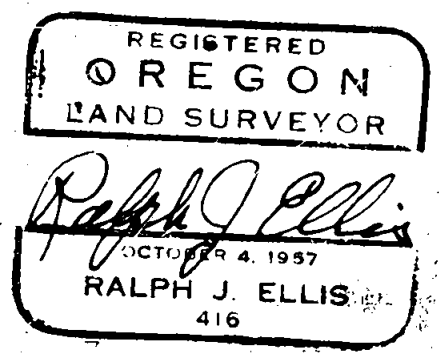
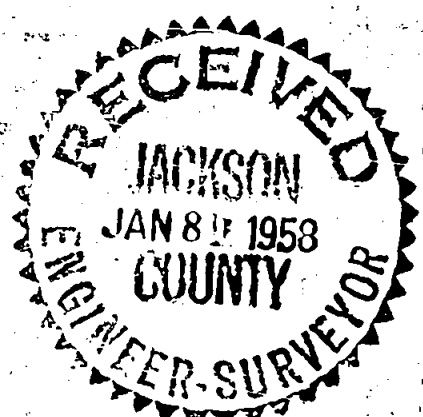
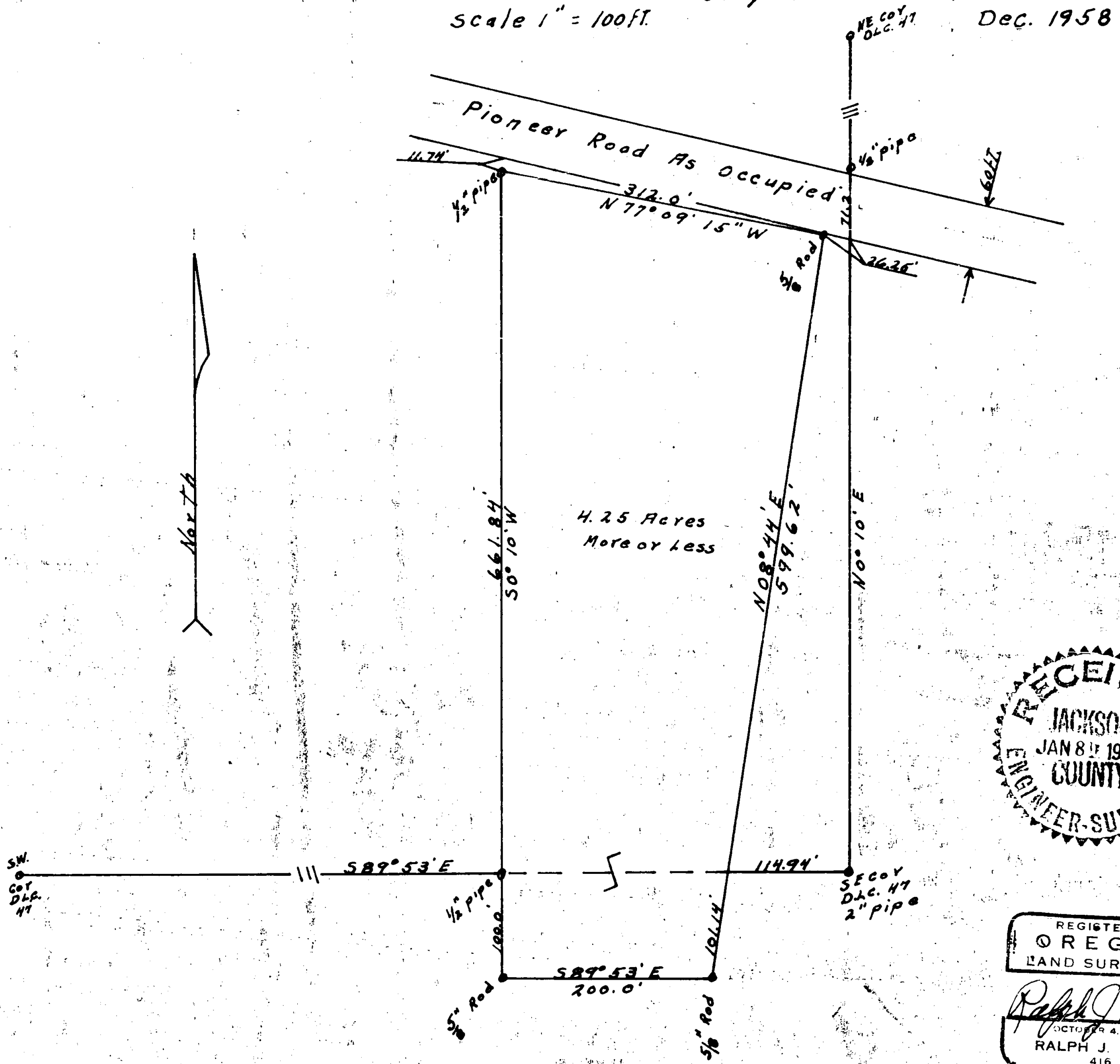
Portion of D.L.C. No. 47 Sec. 11, T38S, R2W W.M.

Jackson County

Oregon

Scale 1" = 100ft.

Dec. 1958



Owen H. & Maxine M. Thomas, Property

Survey Narrative to Comply with Paragraph 209.250,  
Oregon Revised Statues

For:

Owen H. and Maxine M. Thomas

Purpose:

To locate the boundaries of 4.25 acres, property to have one and one-half acre frontage on Pioneer Road--excluding a strip owned by a Mr. Adams.

Procedure:

I was shown three 1/2 inch pipes, which were (1) The N.W. corner of the property (2) A point on the South boundary of D.L.C. No. 47 also marking the West line of the property and (3) a point across Pioneer Road on the East line of D.L.C. No.47. I was also shown a 2 inch pipe marking the S.E. corner of D.L.C. No47.

From a previous survey I found a measurement from the North side of Pioneer Road that put me on the South Right of way and the East line of D.L.C. No.47. After I had lined in between the S.E. Corner and the 1/2 inch pipe above described I measured from the N.W. corner the one and one-half acre frontage to establish the N.E. Corner using the South right of way point previously established as a site.

From the N.W. Corner I checked the line and distance to the 1/2" pipe on the South line of D.L.C. No.47 and produced this line through to the S.W. Corner of the property. I then turned the required angle to make the South line of the property parallel with the South line of D.L.C. No.47 and set the S.E. Corner. I then lined in between the S.E. Corner and the N.E. Corner and measured the length of the east line. I also made a tie from the S.E. Corner of D.L.C. No.47 to my East line as shown on the drawing.

I had the bearings of the South line and the East line of D.L.C. No.47, also of the West line of this property taken from a competent previous survey.

A 5/8" rod was used to mark all of the new corners established.

