

89-30929

11840

89-30929
VANDER LIND HOMES SUBDIVISION
A Planned Unit Development

TO THE CITY of ASHLAND

located in

Southwest Quarter of Section 9,
 Township 39 South, Range 1 East of the
 Willamette Base and Meridian,
 JACKSON COUNTY OREGON

POST MONUMENTATION MAP

APPROVAL

Examined and Approved this 27 day of December, 1989.

George Roberts
 Acting City Surveyor

SWAIN SURVEYING, INC.
 27 1/2 North Main Street
 Ashland, Oregon 97520
 TELEPHONE: 482-4318

DATE: December 22, 1989

Scale: 1" = 60'

I, Everett L. Swain, duly Registered Surveyor of the State of Oregon, do hereby certify that this map represents a survey made by me or under my direction and the monuments conform to O.R.S. 92.060.

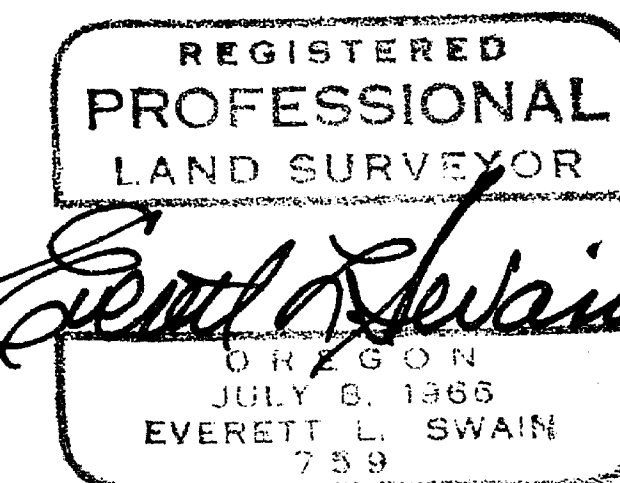
Everett L. Swain
 Surveyor

See plat of Vander Lind Homes Subdivision, A Planned Unit Development, filed for record the 16th day of December, 1988 at 9:28 o'clock A.M. and recorded in Volume 16 of plats at page 11 of records of Jackson County, Oregon, for lot bearings and distances.

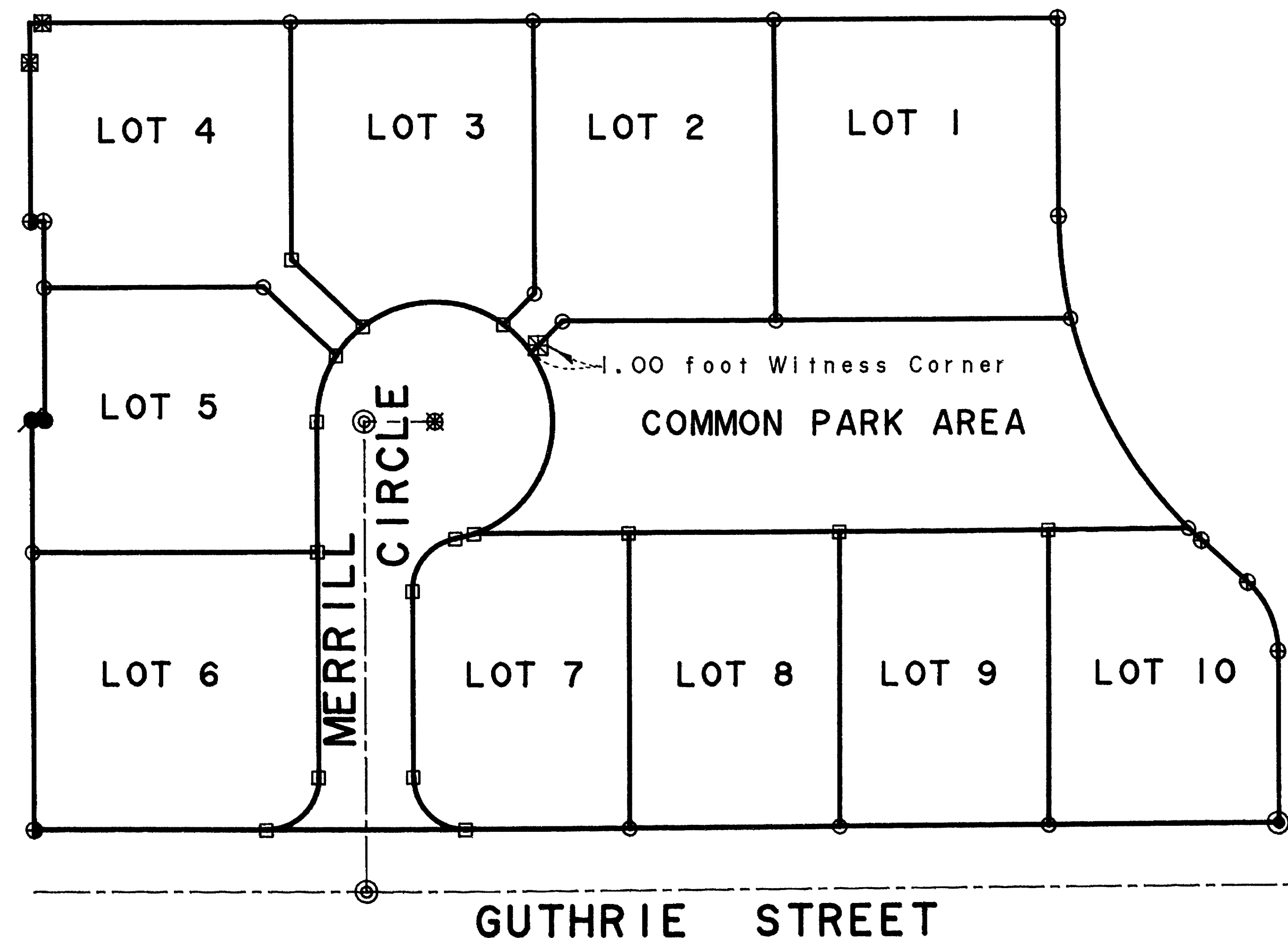
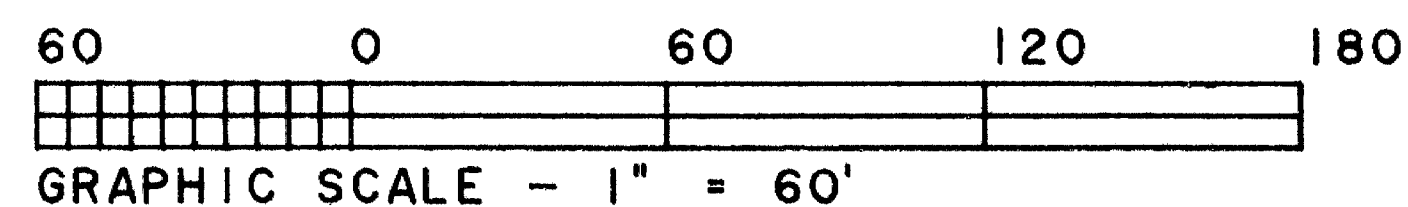
FILED FOR RECORD THIS 29 DAY OF December 1989
 AT 1:37 O'CLOCK P.M. AND RECORDED IN THE
 OFFICIAL RECORDS OF JACKSON COUNTY, OREGON.

Kathleen J. Beckett
 County Clerk

Jay A. Remster
 Deputy



- ⊙ Monument per Original Subdivision Plat
- Monument per Original Subdivision Plat
- ⦿ Monument per Original Subdivision Plat
- Monument per Original Subdivision Plat
- ⊕ Monument per Original Subdivision Plat
- ⊗ Monument per Original Subdivision Plat
- ⊠ Monument per Original Subdivision Plat
- ⊡ Monument per Original Subdivision Plat
- Set 1/2 x 24 inch galvanized iron pipe marked: SWAIN LS 759
- ⊠ Set 5/8 x 24 inch iron rod with 1-1/2 inch diam. Alumn. Cap marked: LS 759 1989 and drill hole.
- ⊠ Set 5/8 x 24 inch iron rod with Red Plastic Cap marked: WIT COR RLS 759
- ⊙ Set 1 x 30 inch galvanized iron pipe with 2-1/2 inch diameter Brass Cap marked: LS 759 1989, in Monu. Case.



Job: DL 1302T

File: DL 1302P

11840