

11839

~~89-30930~~
MILL POND SUBDIVISION
A Planned Unit Development, Phase IV
TO THE CITY of ASHLAND

located in
 Donation Land Claim No. 44 in the Northwest Quarter of Section 10
 Township 39 South, Range 1 East of the
 Willamette Base and Meridian,
 JACKSON COUNTY OREGON

POST MONUMENTATION MAP

APPROVAL

Examined and Approved this 28th day of December, 1989.

George J. Roberts
 Acting City Surveyor

FILED FOR RECORD THIS 29 DAY OF December 1989
 AT 2:37 O'CLOCK P. M. AND RECORDED IN THE
 OFFICIAL RECORDS OF JACKSON COUNTY, OREGON.

Kathleen J. Beckett
 County Clerk

Jay A. Ramette
 Deputy

I, Everett L. Swain, duly Registered Surveyor of the State of Oregon,
 do hereby certify that this map represents a survey made by me or under
 my direction and the monuments conform to O.R.S. 92.060

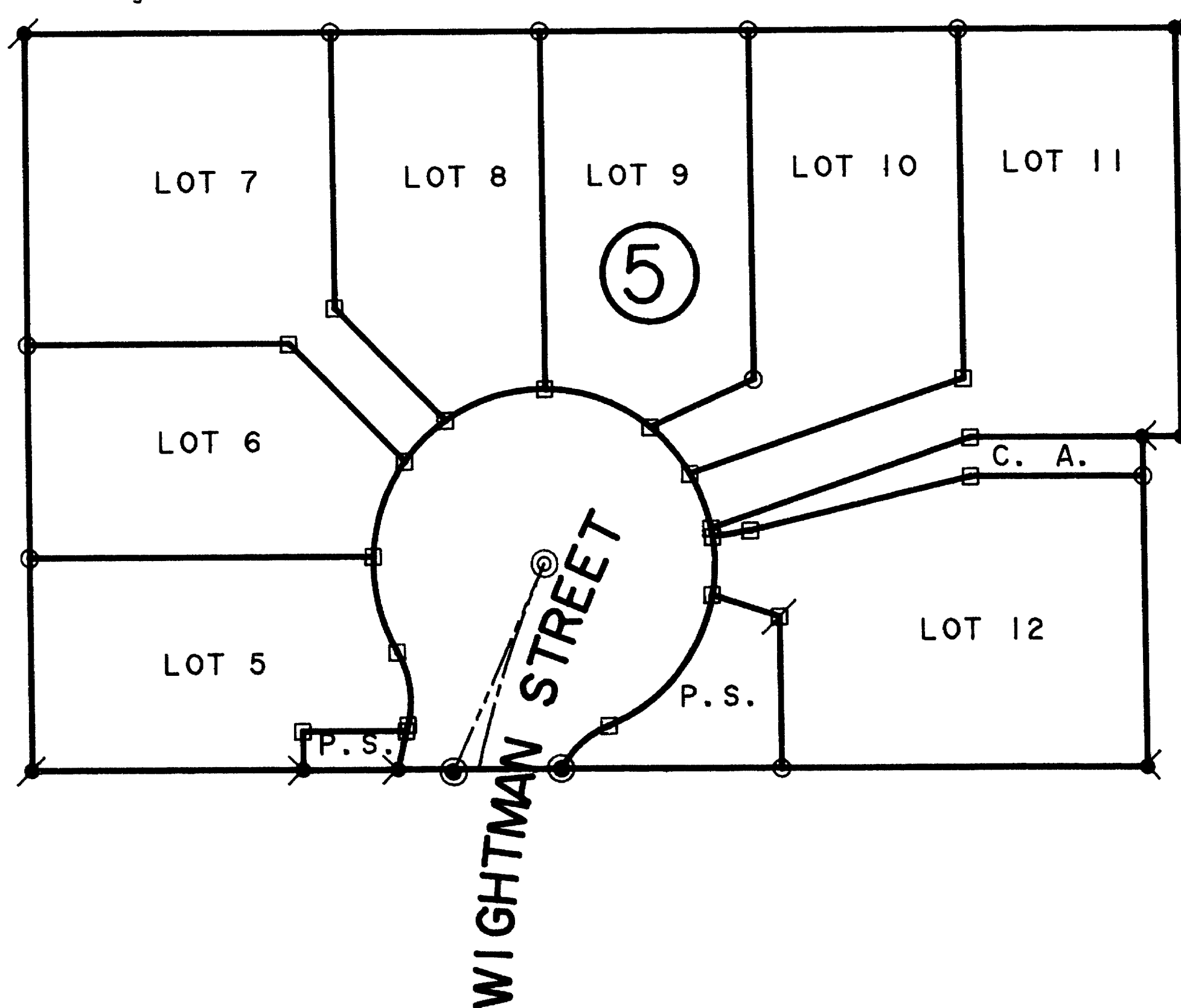
Everett L. Swain
 Surveyor

See plat of Mill Pond Subdivision, A Planned Unit
 Development, Phase IV, filed for record the 3rd day of
 May, 1989 at 4:08 o'clock P.M. and recorded in Volume
 16 of plats at page 20 of records of Jackson County,
 Oregon for lot bearings and distances.

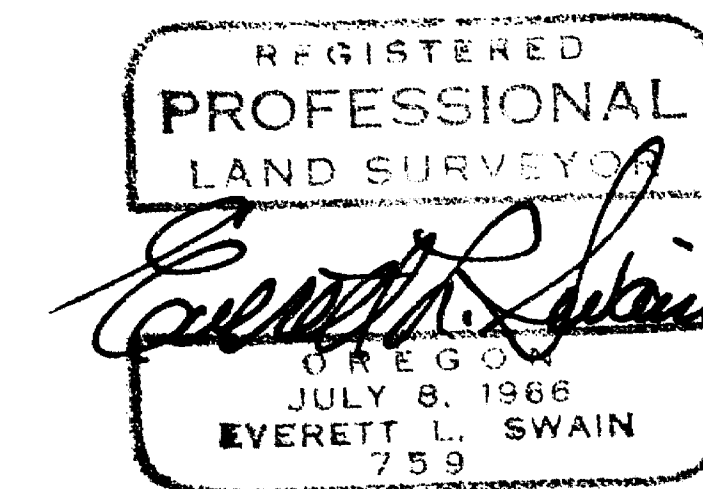
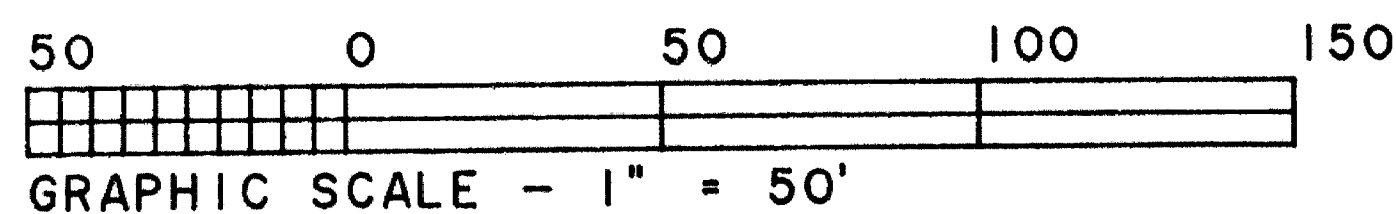
SWAIN SURVEYING, INC.
 27 1/2 North Main Street
 Ashland, Oregon 97520
 TELEPHONE: 482-4318

DATE: December 20, 1989

Scale: 1" = 50'



- Monument per Original Subdivision Plat
- ⊘ Monument per Original Subdivision Plat
- ⊙ Monument per Original Subdivision Plat
- ⊗ Monument per Original Subdivision Plat
- ⊚ Monument per Original Subdivision Plat
- Set 1/2 x 24 inch galvanized iron pipe tagged SWAIN LS 759
- ⊙ Set 1 x 30 inch galvanized iron pipe with 2-1/2 inch diam. Brass Cap marked: LS 759 1989, in a Monument Case.
- ⊗ Set lead plug and brass tag marked: LS 759, in a concrete driveway slab.



11839

Job: LM1291T
 File: LM1291R5

11839