

11771

89-26094

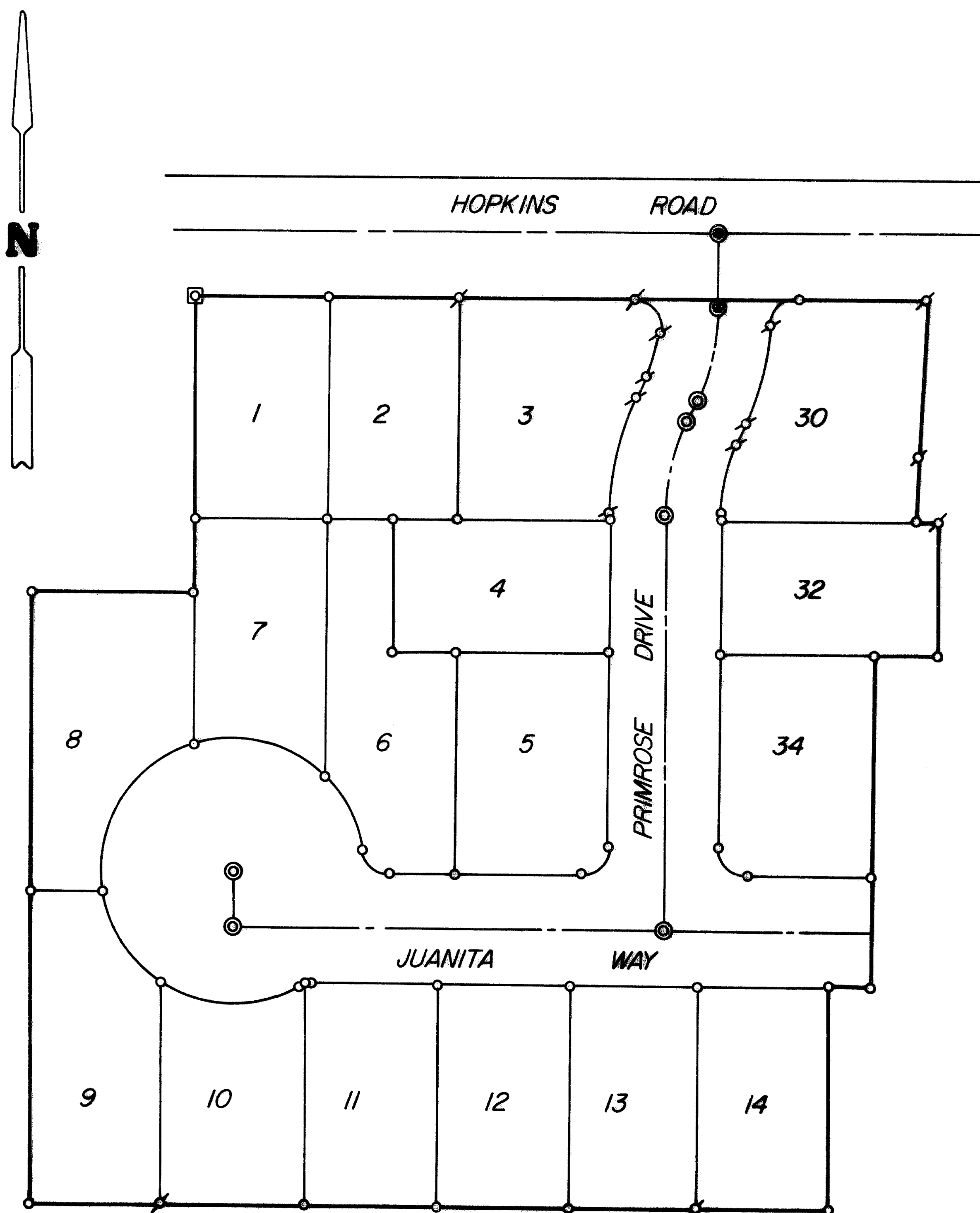
89-26094

4:29 10²

KINGSLAND MANOR SUBDIVISION

UNIT I

POSTMONUMENTATION MAP

LOCATED in D.L.C. No. 58, Section II, T.37S., R.2W., W.M.
Jackson County, OregonEdwards Surveying and Land Planning Inc.
1014 East Pine Street
Central Point, Oregon 97502
Phone: (503) 664-1539

LEGEND

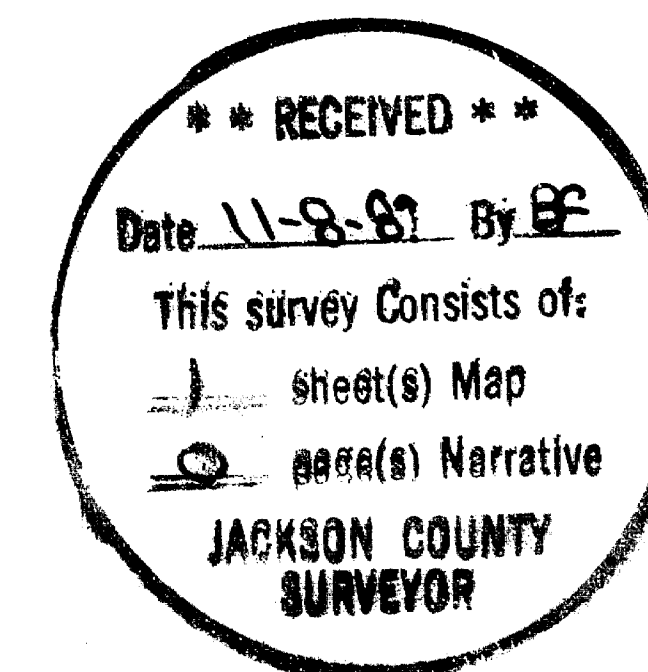
- ♁ Set 5/8" x 30" steel pin w/red plastic cap mkd. "D.A. EDWARDS-RPLS 2339".
- 5/8" diam. Iron Rod found w/yellow cap mkd. "K.A.S. -L.S. 1328".
- ⊙ Brass Cap found flush w/pavement surface.
- ⊠ Brass Cap on 2" diam. Iron Pipe found.
- ⊙ Indicates 1" diam. Aluminum Cap on 5/8" diam. rebar set flush w/pavement surface.

SCALE: 1" = 60'

I, David A. Edwards, a duly registered surveyor of the State of Oregon, do hereby certify that this map represents a survey made by me or under my direction, and that the monuments conform to requirements of O.R.S. 92-060 and to the locations as shown on the original plat of Kingsland Manor Subdivision, Unit No. I, unless otherwise noted.

REGISTERED
PROFESSIONAL
LAND SURVEYOR

David A. Edwards

OREGON
JULY 25, 1986
DAVID A. EDWARDS
2339

Filed for record this 8th day of November, 1989 at
4:29 O'clock P. M. and recorded in the Official Records of
Jackson County, Oregon.

Kathleen S. Redatt by Mark Saba
County Clerk Deputy

Examined and Approved this 8 day of

NOVEMBER, 1989

Verlyn Thomas
County Surveyor

NOTE: See plat of KINGSLAND MANOR SUBDIVISION, UNIT I, filed for record the 21st day of January, 1983 at 1:52 P.M. and recorded in Volume 14 of plats on Page 90 of Records at Jackson County, Oregon, for lot bearings and distances.

11771