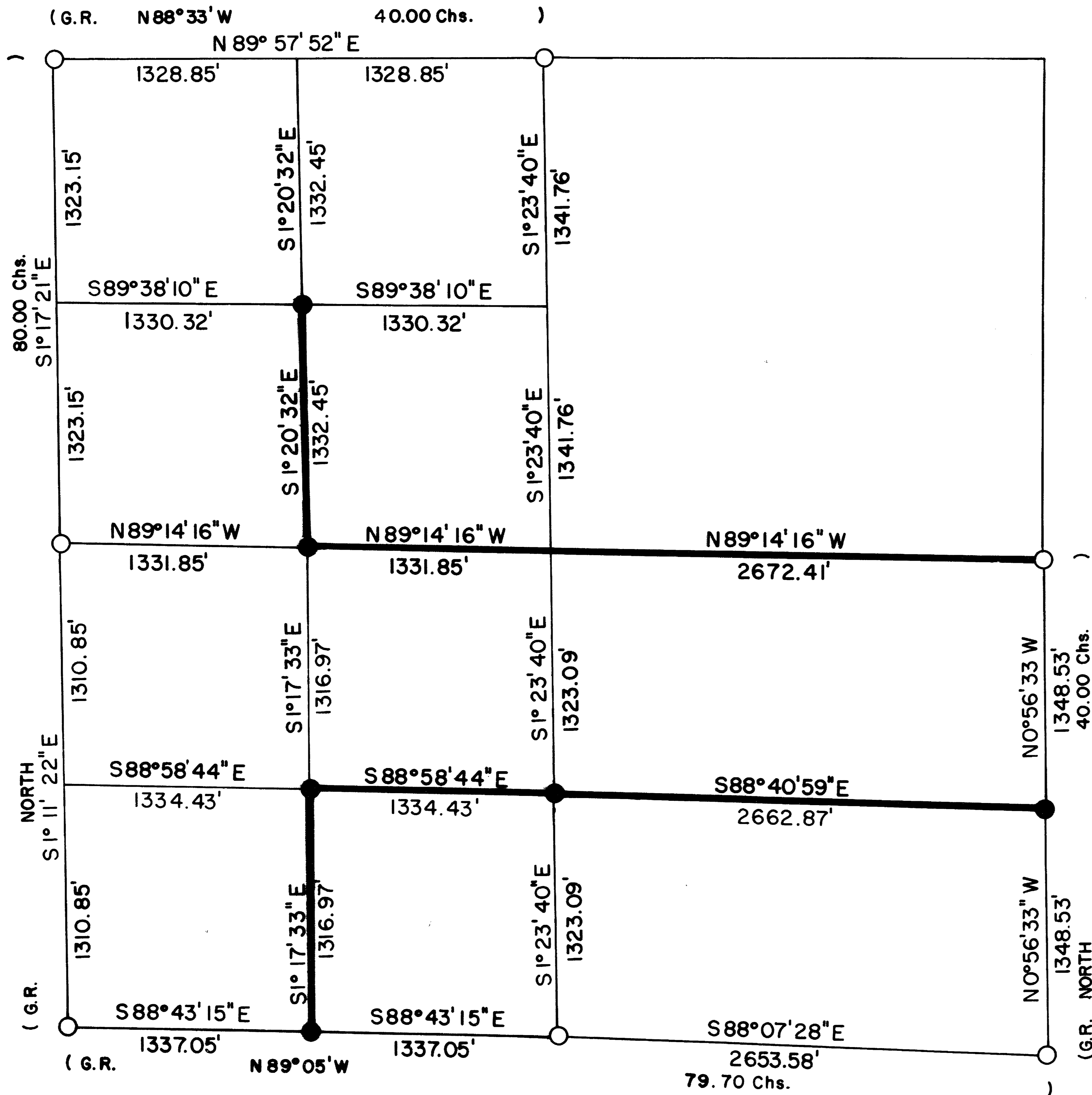


S15 T34S R3E W.M.



CERTIFICATE OF SURVEY

I, ARTHUR R. RAMBO, REGISTRATION No. 1086 REGISTERED PROFESSIONAL LAND SURVEYOR STATE OF OREGON, HEREBY CERTIFY THAT THIS MAP CORRECTLY REPRESENTS A SURVEY MADE BY ME OR UNDER MY DIRECTION IN CONFORMANCE WITH THE LAWS OF THE STATE OF OREGON.

REGISTERED
PROFESSIONAL
LAND SURVEYOR

Arthur R. Rambo

OREGON
JULY 30, 1976
ARTHUR R. RAMBO
No. 1086

LEGEND

- FOUND STANDARD B.L.M. MONUMENT
- SET 5/8" BY 30" REBAR WITH 2" ALUM. CAP
- G.R. 1883 GOVERNMENT RECORD
- LINE POSTED AND BLAZED THIS SURVEY

DATE

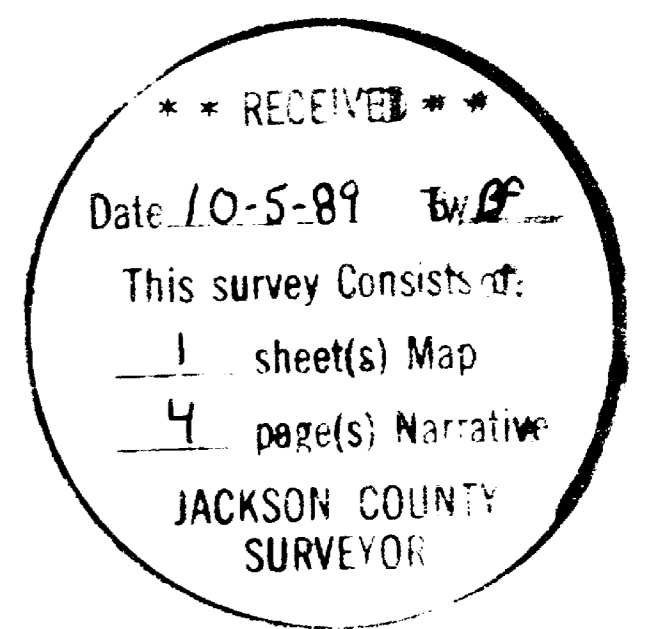
SEPT. 26, 1989

BASIS OF BEARING

SURVEY No. 10,108

SCALE

1" = 500'



T34S R3E
S15
CW . 1/16
LS1086

From which:

- A 7 inch dia. Cedar bears S 73° 38' W, 12.9 feet marked CW 1/16 S15 in upper face, BT in lower face.
- A 5½ inch dia. Pine bears N 36° 31' E, 25.2 feet marked CW 1/16 S15 in upper face, BT in lower face.

Center South one-sixteenth corner Section 15, Township 34 South, Range 3 East Willamette Meridian. At the corner location I set a 5/8 x 30 inch rebar with a 2 inch aluminum cap, exposed 7 inches in a mound of stone, marked:

T34S R3E
S15
CS . 1/16
LS1086

From which:

- A 8 inch dia. Oak bears N 48° 33' W, 152.4 feet marked CS 1/16 S15 in upper face, BT in lower face.
- A 10½ inch dia. Pine bears S 54° 49' W, 327.1 feet marked CS 1/16 S15 in upper face, BT in lower face.

South one-sixteenth corner common to Sections 14 and 15, Township 34 South, Range 3 East, Willamette Meridian. At the corner location I set a 5/8 x 30 inch rebar with a 2 inch aluminum cap, exposed 6 inches, marked:

T34S R3E
S 1/16
S15.S14
LS1086

From which:

- A 10½ inch dia. Pine bears S 79° 57' E, 69.2 feet marked S 1/16 S 14 in upper face, BT in lower face.
- A 6 inch dia. Pine bears S 89° 36' W, 35.7 feet marked S 1/16 S15 in upper face, BT in lower face.

South West one-sixteenth corner Section 15, Township 34 South, Range 3 East, Willamette Meridian. At the corner location I set a 5/8 x 30 inch dia. rebar with a 2 inch aluminum cap, exposed 10 inches in a mound of stone, marked:

T34S R3E
S15
SW . 1/16
LS1086

From which:

- A 11 inch dia. Madrona bears N 44° 08' E, 27.4 feet marked SW 1/16 S15 in upper face, BT in lower face.
- A 10 inch dia. Fir bears S 26° 14' E, 14.7 feet marked SW 1/16 S15 in upper face, BT in lower face.

* * RECEIVED * *

Date 10-5-89 By BS

This survey consists of:

1 sheet(s) Map

4 page(s) Narrative

JACKSON COUNTY
SURVEYOR

REGISTERED
PROFESSIONAL
LAND SURVEYOR

Arthur R. Rambo

OREGON
JULY 30, 1976
ARTHUR R. RAMBO
No. 1086

From which:

- A 19 inch dia. Fir bears S 49° 42' E, 113.2 feet with unopened face.
- A 14½ inch dia. Yew wood bears N 75° 28' W, 5.3 feet with ¼ visible in partially healed face.

Section corner common to Section 9, 10, 15 and 16, Township 34 South, Range 3 East, Willamette Meridian. At the corner location I found a standard Bureau of Land Management monument, flush with the ground, marked:

T34S	R3E
S9	S10
S16	S15
1964	

From which:

- A 34 inch dia. Fir stump bears S 56° 04' W, 99.5 feet with unopened face.
- A 38 inch dia. Cedar bears N 43° 42' W, 213.9 feet with BT visible in partially healed face.
- A 30 inch dia. Cedar bears S 42° 09' W, 145.2 feet with unopened face.

CORNERS SET THIS SURVEY

All measurements to bearing trees are to the center of tree at lower blaze unless otherwise stated. All bearing trees have a brass washer stamped LS 1086 nailed to lower blaze.

West one-sixteenth corner common to Sections 15 and 22, Township 34 South, Range 3 East, Willamette Meridian. At the corner location I set a 5/8 x 30 inch rebar with a 2 inch aluminum cap, exposed 8 inches in a mound of stone, marked:

T34S	R3E
S15	
W .	1/16
S22	
LS1086	

From which:

- A 13½ inch dia. Pine bears S 16° 24' W, 9.2 feet marked W 1/16 S15 in upper face, BT in lower face.
- A 12½ inch dia. Pine bears N 1° 26' E, 19.6 feet marked W 1/16 S22 in upperface, BT in lower face.

North West one-sixteenth corner Section 15, Township 34 South, Range 3 East, Willamette Meridian. At the corner location I set a 5/8 x 30 inch rebar with a 2 inch aluminum cap, exposed 10 inches, marked:

T34S	R3E
S15	
NW .	1/16
LS1086	

From which:

- A 7 inch dia. Fir bears N 29° 12' W, 10.8 feet marked NW 1/16 S15 in upper face, BT in lower face.
- A 10½ inch dia. Cedar bears N 3° 59' E, 24.7 feet marked NW 1/16 S15 in upperface, BT in lower face.

Center west one-sixteenth corner Section 15, Township 34 South, Range 3 East, Willamette Meridian. At the corner location I set a 5/8 x 30 inch rebar with a 2 inch aluminum cap, exposed 7 inches, marked:

From which:

- A 16 inch dia. Pine bears S 66° 08' W, 108.8 feet with unopened face.
- A 12½ inch dia. Cedar bears N 86° 28' W, 105.6 feet with SR3ES15BT visible in partially healed face.
- A 14½ inch dia. Pine bears N 50° 13' E, 184.8 feet with unopened face.
- A 15½ inch dia. Pine bears S 56° 55' E, 135.0 feet with unopened face.
- A 60 inch dia. Pine stump bears S 53° 47' W, 14.2 feet with unopened face.

One-quarter corner common to Sections 14 and 15, Township 34 South, Range 3 East, Willamette Meridian. At the corner location I found a standard Bureau of Land Management monument, exposed 10 inches in a mound of stone, marked:

T34S R3E
 $\frac{1}{4}$
 S15 | S14
 1964

From which:

- A 16 inch dia. Pine stump bears N 70° 51' W, 40.3 feet with unopened face.
- A 17 inch dia. Cedar bears N 60° 03' E, 27.6 feet with unopened face.
- A 28 inch dia. Fir stump bears N 77° 48' E, 14.8 feet with unopened face.

One-quarter corner common to Sections 15 and 22, Township 34 South, Range 3 East, Willamette Meridian. At the corner location I found a standard Bureau of Land Management monument, exposed 10 inches, marked:

T34S R3E
 $\frac{1}{4}$ S15
 S22
 1964

From which:

- A 24 inch dia Fir bears S 2° 50' E, 36.3 feet with unopened face.
- A 13½ inch dia. Pine bears N 59° 48' W, 25.8 feet with unopened face.
- A 27 inch dia. Fir bears N 74° 02' E, 12.9 feet with unopened face.

One-quarter corner common to Sections 10 and 15, Township 34 South, Range 3 East, Willamette Meridian. At the corner location I found a standard Bureau of Land Management monument, exposed 3½ inches, marked:

T34S R3E
 $\frac{1}{4}$ S10
 S15
 1964

From which:

- A 12 inch dia. Fir bears N 63° 59' W, 20.5 feet with unopened face.
- A 17 inch dia. Fir bears N 88° 32' E, 21.6 feet with unopened face.

One-quarter corner common to sections 15 and 16, Township 34 South, Range 3 East, Willamette Meridian. At the corner location I found a standard Bureau of Land Management monument, exposed 6 inches, marked:

T34S R3E
 $\frac{1}{4}$
 S16 | S15
 1964

SURVEY NARRATIVE TO COMPLY WITH O.R.S. 209.250

Location: Section 15, Township 34 South, Range 3 East, Willamette Meridian
Jackson County, Oregon.

Survey for: Medford Corporation
P. O. Box 550
Medford, Oregon 97501

Survey by: Arthur R. Rambo PLS 1086
735 Vista Park Drive
Eagle Point, Oregon 97524

Date: September 26, 1989

Purpose: To mark and post Medford Corporation land in said Section 15, as shown
on the plat to accompany this report.

Procedure: A search of the records revealed that the original section and quarter
section corners needed for this survey had been reestablished. I ran a
random line closed traverse beginning and closing to survey number
10108, tying to the corners needed for control of this survey. The
subdivision of this section was then calculated and the interior lines
needed were ran closing to the exterior line.

CORNERS FOUND AND ACCEPTED FOR CONTROL OF THIS SURVEY:

Section corner common to Sections 15, 16, 21 and 22, Township 34 South, Range 3 East,
Willamette Meridian. At the corner location I found a standard Bureau of Land
Management monument, exposed 8½ inches, marked:

T34S R3E
S16 | S15
S21 | S22
1964

From which:

- A 9½ inch dia. Fir bears N 47° 20' E, 16.7 feet with unopened face.
- A 19 inch dia. Pine bears N 79° 04' E, 32.1 feet with some scribe visible in
opened lower face.
- A 19 inch dia. Fir bears S 55° 35' E, 25.3 feet with unopened face.
- A 31 inch dia. Pine bears S 2° 03' W, 33.0 feet with unopened face.
- A 11 inch dia. Fir bears S 64° 30' W, 48.8 feet with unopened face.
- A 40 inch dia. Pine stump bears N 61° 37' W, 40.2 feet with rotten face, no
scribe visible.
- A 16 inch dia. Fir bears N 58° 23' W, 64.4 feet with unopened face.

Section corner common to Sections 14, 15, 22 and 23, Township 34 South, Range 3 East,
Willamette Meridian. At the corner location I found a standard Bureau of Land
Management monument, exposed 9 inches in a mound of stone, marked:

T34S R3E
S15 | S14
S22 | S23
1964

Tax Lot 34-3E-02600
34-3E-02700
34-3E-02800