

T. 35 S., R. 3 E., W. M.

MAP OF SURVEY

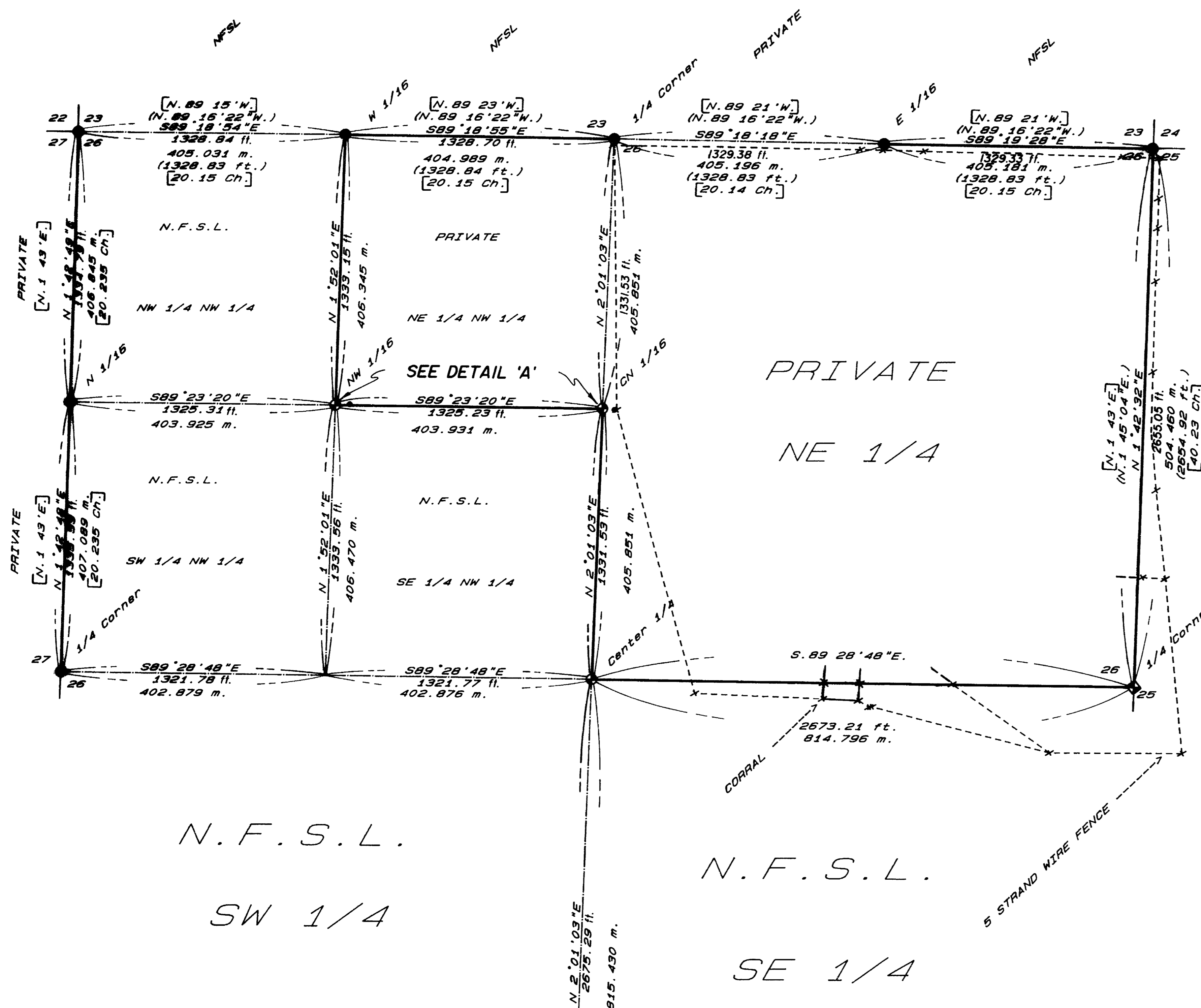
FOR

ROGUE RIVER NATIONAL FOREST

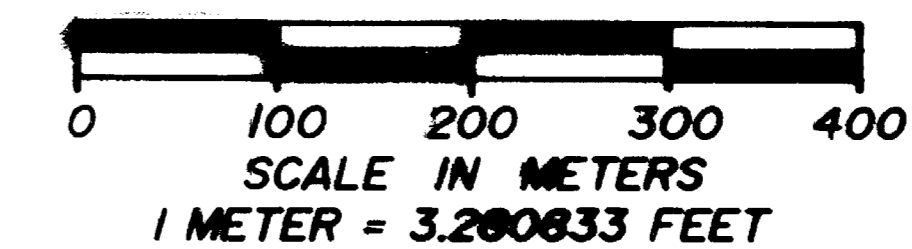
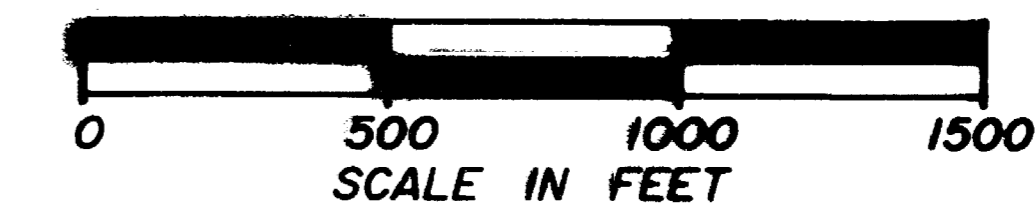
P.O. BOX 520

MEDFORD, OREGON

APRIL 14, 1989



BASIS OF BEARING: SOLAR OBSERVATION



CERTIFICATE OF SURVEY

I, HAROLD L. CENTER REGISTRATION NO. 1071, REGISTERED PROFESSIONAL LAND SURVEYOR, STATE OF OREGON, HEREBY CERTIFY THAT THIS PLAT CORRECTLY REPRESENTS A SURVEY MADE BY ME OR UNDER MY DIRECT SUPERVISION IN CONFORMANCE WITH THE LAWS OF THE STATE OF OREGON AT THE REQUEST OF THE UNITED STATES FOREST SERVICE.



** RECEIVED **
 Date 5-31-89 By J.K.
 This survey consists of:
 1 sheet(s) Map
 1 page(s) Narrative
 JACKSON COUNTY SURVEYOR

PROJECT NO. 89-29

U.S. DEPARTMENT OF AGRICULTURE
 FOREST SERVICE
 REGION 6 - ROGUE RIVER NATIONAL FOREST

DEPENDENT RESURVEY
 AND
 SECTION SUBDIVISION
 SEC. 26, T.35S., R.3E., W.M.
 JACKSON COUNTY, OREGON

REVIEWED BY: *John W. Bell* DATE: 5/19/89
 REVIEWED BY: *Paul Keating* DATE: 5/1/89

HISTORY OF SURVEYS

THE ORIGINAL EXTERIOR BOUNDARIES OF SECTION 26 WERE SURVEYED BY NATHANIEL FORD UNDER CONTRACT NO. 58 DATED MAY 18, 1835.

THE SECTION CORNER FOR SECTIONS 22, 23, 26 AND 27 WAS REMONUMENTED FROM EVIDENCE BY THE BUREAU OF LAND MANAGEMENT IN 1966.

THE NORTH AND EAST LINES OF SECTION 26 WERE RESURVEYED BY ARTHUR R. RAMBO, P.L.S. 1006, DURING A DEPENDENT RESURVEY DATED MARCH, 1977. REFERENCE RECORD SURVEY NO. 6744. DURING THIS SURVEY, RAMBO ESTABLISHED THE FOLLOWING CORNERS BY PROPORTIONATE MEASUREMENT:

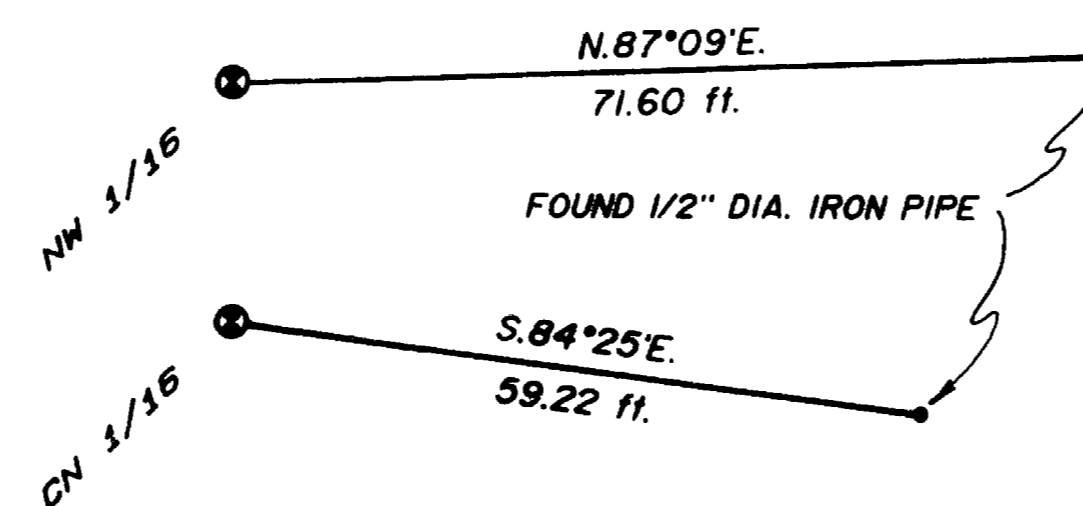
THE SECTION CORNER FOR SECTIONS 23, 24, 25 AND 26. THE ONE-QUARTER CORNER FOR SECTIONS 23 AND 26. THE ONE-QUARTER CORNER FOR SECTIONS 25 AND 26.

SURVEYOR RAMBO ALSO ESTABLISHED THE EAST AND WEST ONE-SIXTEENTH CORNERS FOR SECTIONS 23 AND 26 AT THIS TIME.

THE BUREAU OF LAND MANAGEMENT REMONUMENTED THE RAMBO CORNERS IN 1977. THEY ALSO ACCEPTED THE RAMBO ONE-QUARTER CORNER FOR SECTIONS 23 AND 26 AS BEING A CAREFUL AND FAITHFUL REESTABLISHMENT OF THE CORNER POINT, BUT DID NOT REMONUMENT IT.

NO OTHER SURVEYS ARE OF RECORD.

DETAIL 'A' - NOT TO SCALE



"LEGEND"

- FOUND BUREAU OF LAND MANAGEMENT MONUMENT
- SET 2 1/2" DIA. BRASS CAP ON A 2 1/2" X 30" IRON POST
- FOUND UNRECORDED 1/2" DIA. IRON PIPE
- X-----X 5 STRAND BARBED WIRE FENCE
- CALCULATED LINE FROM TRAVERSE SURVEY
- PROPERTY BOUNDARY MARKED AND POSTED THIS SURVEY
- N. F. S. L. NATIONAL FOREST SYSTEM LANDS
- [] GOVERNMENT RECORD [1977 RECORD]
- () RECORD SURVEY 6744, PLS 1006 (A. RAMBO) 1977
- ◆ SET 2 1/2" DIA. BRASS CAP ON 2 1/2" X 30" IRON POST DIRECTLY OVER A. RAMBO'S MONUMENT.

T 35 S R 3 E
 C 1/4 — S 26
 1989
 LS 1071

From which:

A 14-inch diameter fir bears S.38°31'W., 12.15 feet distance,
 scribed C1/4S26LS1071 BT.

A 13-inch diameter fir bears N.64°58'W., 24.70 feet distance,
 scribed C1/4S26LS1071 BT.

The center-north one-sixteenth corner for section 26, Township 35 South, Range
 3 East, Willamette Meridian, Jackson County, Oregon.

At the corner point, I set a 2 1/2 inch diameter brass cap monument on a 2 1/2
 inch diameter galvanized iron post 26 inches in the ground, marked:

T 35 S R 3 E
 C
 N 1/16 | S 26
 C
 1989
 LS 1071

From which:

A 23-inch diameter pine bears S.45°26'W., 25.40 feet distance,
 scribed CN1/16S26LS1071 BT.

An 8-inch diameter fir bears S.75°29'W., 16.87 feet distance,
 scribed X BT.

NOTE: An unrecorded local monument was found S.84°25'E., 59.22 feet from the
 corner point. Also, a barbed wire fence bears East, 12.0 feet from said local
 corner.

A 14-inch diameter fir bears N.44°20'E., 44.40 feet distance, with a healed blaze.

A 10-inch diameter dead tree, 5 feet tall, bears S.47°06'E., 69.14 feet distance, with scribing T35SR3ES26 BT visible.

I marked the following new accessory:

A 10-inch diameter fir bears S.32°51'E., 54.46 feet distance, scribed T35SR3ES26LS1071 BT.

The north one-sixteenth corner for sections 26 and 27, Township 35 South, Range 3 East, Willamette Meridian, Jackson County, Oregon.

At the corner point, I found a Bureau of Land Management monument protruding 6 inches above ground, marked:

U.S. DEPT OF INTERIOR
UNLAWFUL TO DISTURB

T 35 S R 3 E
N 1/16

S27 | S26

1977

BUREAU OF LAND MANAGEMENT
CADASTRAL SURVEYS

From which:

A 13-inch diameter fir bears N.33°13'E., 11.15 feet distance, with a healed blaze.

A 9-inch diameter pine bears N.76°43'W., 21.95 feet distance, with a healed blaze.

CORNERS ESTABLISHED THIS SURVEY

The center one-quarter corner for section 26, Township 35 South, Range 3 East, Willamette Meridian, Jackson County, Oregon.

At the corner point, I set a 2 1/2 inch diameter brass cap monument on a 2 1/2 inch diameter galvanized iron post 27 inches in the ground, marked:

The west one-sixteenth corner for sections 23 and 26, Township 35 South, Range 3 East, Willamette Meridian, Jackson County, Oregon.

At the corner point, I found a Bureau of Land Management monument protruding 6 inches above ground, marked:

U.S. DEPT OF INTERIOR
UNLAWFUL TO DISTURB

T 35 S R 3 E

S23
W 1/16 ———
S26
1977

BUREAU OF LAND MANAGEMENT
CADASTRAL SURVEYS

From which:

A 13-inch diameter fir bears N.45°30'E., 23.50 feet distance, with a healed blaze.

A 15-inch diameter fir bears S.39°44'W., 16.90 feet distance, with a healed blaze.

The section corner for sections 22, 23, 26 and 27, Township 35 South, Range 3 East, Willamette Meridian, Jackson County, Oregon.

At the corner point, I found a Bureau of Land Management monument protruding 12 inches above ground, marked:

U.S. DEPT OF INTERIOR
UNLAWFUL TO DISTURB

T 35 S R 3 E
S22 | S23
S27 | S26
1966

BUREAU OF LAND MANAGEMENT
CADASTRAL SURVEYS

From which:

A 14-inch diameter fir bears S.21°24'W., 32.89 feet distance, with a healed blaze.

A 17-inch diameter fir bears N.89°31'W., 33.17 feet distance, with a healed blaze.

U.S. DEPT OF INTERIOR
UNLAWFUL TO DISTURB
T 35 S R 3 E
S23
1/4 ———
S26
1977

BUREAU OF LAND MANAGEMENT
CADASTRAL SURVEYS

From which:

A 9-inch diameter fir bears $S.84^{\circ}49'W.$, 18.50 feet distance,
with fragmentary scribing visible in a partly healed blaze.

An 11-inch diameter fir bears $N.68^{\circ}38'E.$, 39.16 feet distance,
with a healed blaze.

NOTE: A northwest fence corner bears East, 2.0 feet distance from the corner
point.

The east one-sixteenth corner for sections 23 and 26, Township 35 South, Range
3 East, Willamette Meridian, Jackson County, Oregon.

At the corner point, I found a Bureau of Land Management monument protruding 12
inches above ground, marked:

U.S. DEPT OF INTERIOR
UNLAWFUL TO DISTURB
T 35 S R 3 E
S23
E 1/16 ———
S26
1977

BUREAU OF LAND MANAGEMENT
CADASTRAL SURVEYS

From which:

A 14-inch diameter fir bears $N.61^{\circ}12'W.$, 16.80 feet distance,
with a healed blaze.

A 14-inch diameter fir bears $N.49^{\circ}49'E.$, 6.60 feet distance,
with a healed blaze.

NOTE: An east-west fence line bears South, 32.4 feet distance from the corner
point.

From which:

A 19-inch diameter cedar bears S.14°42'E., 272.85 feet distance, with scribing PLS1086 BT visible.

A 34-inch diameter pine bears S.36°03'W., 293.09 feet distance, with a healed blaze.

NOTE: A southeast fence corner bears S.36°07'E., 405.8 feet distance from the corner point.

The section corner for sections 23, 24, 25 and 26, Township 35 South, Range 3 East, Willamette Meridian, Jackson County, Oregon.

At the corner point, I found a Bureau of Land Management monument protruding 2 inches above ground, marked:

U.S. DEPT OF INTERIOR
UNLAWFUL TO DISTURB

T 35 S R 3 E	
S23	S24
S26	S25

1977
BUREAU OF LAND MANAGEMENT
CADASTRAL SURVEYS

From which:

A 15-inch diameter pine bears S.28°41'W., 39.65 feet distance, with a healed blaze. This tree has a double top.

A 16-inch diameter fir bears N.63°56'W., 34.33 feet distance, with a healed blaze.

A 19-inch diameter pine bears N.82°47'E., 69.71 feet distance, with a healed blaze.

A 16-inch diameter fir bears S.48°40'E., 90.87 feet distance, with a healed blaze.

NOTE: A northeast fence corner bears S.35°30'E., 58.6 feet distance from the corner point.

The one-quarter corner for sections 23 and 26, Township 35 South, Range 3 East, Willamette Meridian, Jackson County, Oregon.

At the corner point, I found a Bureau of Land Management monument protruding 2 inches above ground, marked:

From which:

A 7-inch diameter fir bears N.34°28'E., 49.92 feet distance, with a healed blaze.

A 10-inch diameter fir bears S.78°15'W., 28.14 feet distance, with a healed blaze.

The one-quarter corner for sections 26 and 35, Township 35 South, Range 3 East, Willamette Meridian, Jackson County, Oregon.

At the corner point, I found a Bureau of Land Management monument protruding 4 inches above ground, marked:

U.S. DEPT OF INTERIOR
UNLAWFUL TO DISTURB

T 35 S R 3 E

S26
1/4 ———
S35

1977
BUREAU OF LAND MANAGEMENT
CADASTRAL SURVEYS

From which:

A 16-inch diameter fir bears N.03°34'W., 39.30 feet distance, with a healed blaze.

A 24-inch diameter sawed fir stump bears S.51°11'E., 8.50 feet distance, with no marks visible at this time.

A 12-inch diameter fir bears S.08°29'W., 20.60 feet distance, with a healed blaze.

The one-quarter corner for sections 25 and 26, Township 35 South, Range 3 East, Willamette Meridian, Jackson County, Oregon.

At the corner point, I found a 1-inch diameter aluminum cap set by Arthur R. Rambo, PLS 1086. Directly over said monument, I set a 2 1/2 inch diameter brass cap on a 2 1/2 inch diameter iron post 30 inches in the ground, marked:

T 35 S R 3 E

1/4
S26 | S25

1989
LS 1071

I calculated the subdivision of section 26 and began the interior traverse at the one-quarter corner for sections 25 and 26. I traversed westerly and northerly and established positions for the center one-quarter corner, center-north and northwest one-sixteenth corners, and tied the interior traverse to the exterior control traverse at the west one-sixteenth corner for sections 23 and 26. Various fence lines that do not necessarily follow the property boundaries were found and tied in while performing this survey. A portion of a private land owners corral and fence line was found to encroach on Government land as shown in Detail "A" on the attached map of survey. Unrecorded local monuments were found near the center-north and northwest one-sixteenth corners as shown on the attached map of survey. Surveyor Rambo noted that he found an unrecorded local monument near the one-quarter corner for sections 23 and 26 believed set by Charles R. Lewis (land owner) sometime before 1977.

All monuments set are 2 1/2 inch diameter brass caps on 2 1/2 inch by 30 inch long galvanized iron posts. The property boundary was marked with 6 foot aluminum posts with property boundary (54-2) signs attached. Trees along line were blazed and painted with red timber marking paint.

EQUIPMENT: Equipment used throughout this survey include a Wild T-2 theodolite, Sokkisha Red 2L distance meter, and a Nikon NTD-4 total station.

BASIS OF BEARING: Solar Observation

CORNER ACCEPTED FOR CONTROL

The one-quarter corner for sections 26 and 27, Township 35 South, Range 3 East, Willamette Meridian, Jackson County, Oregon.

At the corner point, I found a Bureau of Land Management monument protruding 4 inches above ground, marked:

U.S. DEPT OF INTERIOR
UNLAWFUL TO DISTURB

T 35 S R 3 E
1/4
S27 | S26

1977
BUREAU OF LAND MANAGEMENT
CADASTRAL SURVEYS

SURVEY NARRATIVE to COMPLY with
PARAGRAPH 209.250, OREGON REVISED STATUTES

SURVEY FOR: ROGUE RIVER NATIONAL FOREST
333 W. 8th STREET
P.O. BOX 520
MEDFORD, OREGON 97501

LOCATION: TOWNSHIP 35 SOUTH, RANGE 3 EAST, SECTION 26, WILLAMETTE MERIDIAN,
JACKSON COUNTY, OREGON.

PURPOSE: TO SET PROPERTY CORNERS AND TO MARK AND POST THE PROPERTY
BOUNDARIES BETWEEN NATIONAL FOREST AND PRIVATE LANDS WITHIN
SECTION 26.

HISTORY OF
SURVEYS:

The original exterior boundaries of section 26 were surveyed by Nathaniel Ford under contract No. 58 dated May 18, 1855.

The section corner for sections 22, 23, 26 and 27 was remonumented from evidence by the Bureau of Land Management in 1966.

The north and east lines of section 26 were resurveyed by Arthur R. Rambo, P.L.S. 1086 during a dependent resurvey dated March, 1977. Reference Record Survey No. 6744. During this survey, Rambo established the following corners by proportionate measurement:

The section corner for sections 23, 24, 25 and 26.

The one-quarter corner for sections 23 and 26.

The one-quarter corner for sections 25 and 26..

Surveyor Rambo also established the east and west one-sixteenth corners for sections 23 and 26 at this time.

The Bureau of Land Management remonumented the Rambo corners in 1977. They also accepted the Rambo one-quarter corner for sections 25 and 26 as being a careful and faithful reestablishment of the corner point, but did not remonument it.

No other surveys are of record.

PROCEDURE:

I began this survey with an investigation of the controlling corner points. All controlling exterior corner points were found. A 400 link discrepancy was noted in the Bureau of Land Management's measurement to the southwest bearing tree for the one-quarter corner for sections 25 and 26. My measurement agrees with surveyor Rambo's measurement, and not the Bureau of Land Management's.

I began the exterior control traverse by taking a solar observation. I then traversed around the perimeter of section 26 tying all found corner to a closed loop traverse.