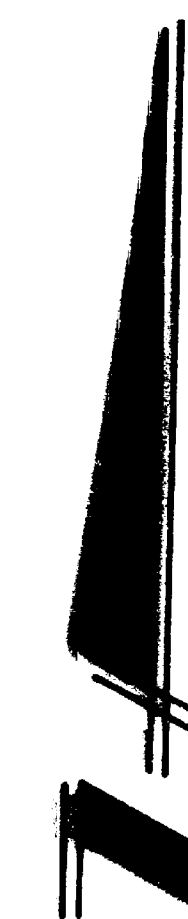
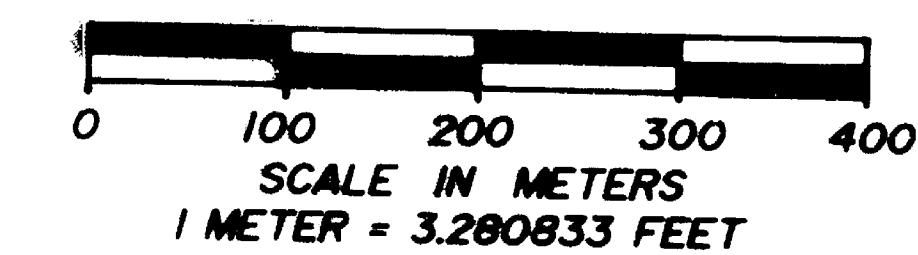
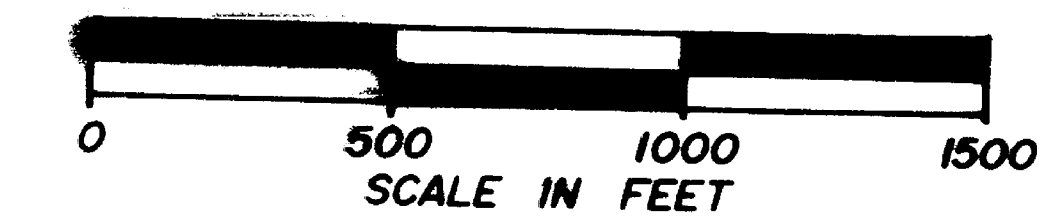


MAP OF SURVEY FOR ROGUE RIVER NATIONAL FOREST

P.O. BOX 520
MEDFORD, OREGON
APRIL 3, 1989



BASIS OF BEARING: SOLAR OBSERVATION - RECORD SURVEY 9242



CERTIFICATE OF SURVEY

I, HAROLD L. CENTER, REGISTRATION NO. 1071, REGISTERED PROFESSIONAL LAND SURVEYOR, STATE OF OREGON, HEREBY CERTIFY THAT THIS PLAT CORRECTLY REPRESENTS A SURVEY MADE BY ME OR UNDER MY DIRECT SUPERVISION IN CONFORMANCE WITH THE LAWS OF THE STATE OF OREGON AT THE REQUEST OF THE UNITED STATES FOREST SERVICE.

REGISTERED
PROFESSIONAL
LAND SURVEYOR

Harold L. Center
HAROLD L. CENTER
JULY 30 1976
No. 1071

PROJECT NO. 88-26C

U.S. DEPARTMENT OF AGRICULTURE
FOREST SERVICE
REGION 6 - ROGUE RIVER NATIONAL FOREST

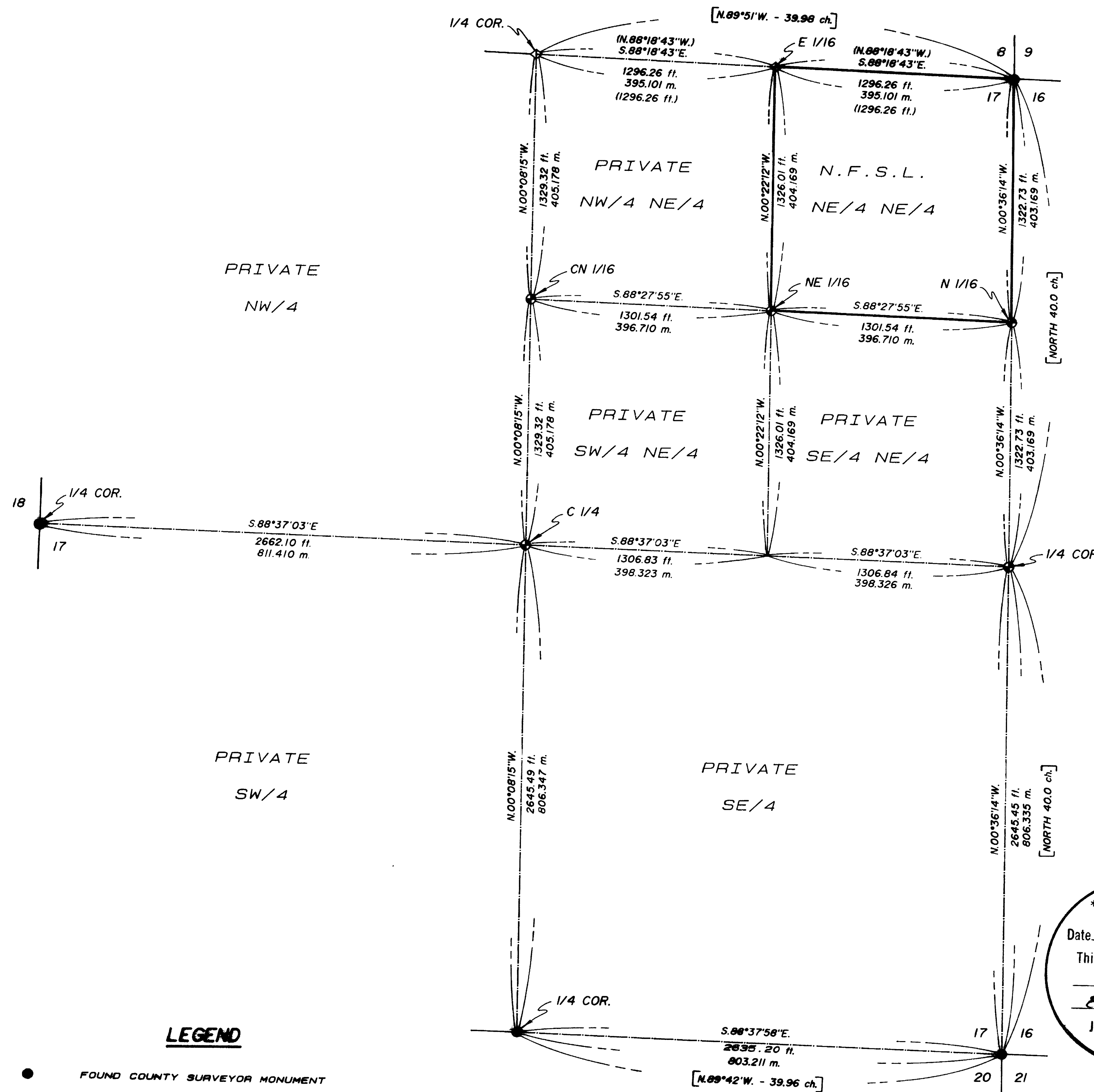
DEPENDENT RESURVEY
AND
SECTION SUBDIVISION
SECTION 17, T.32S., R.2E., W.M.
JACKSON COUNTY, OREGON

REVIEWED BY: *John R. Ball* DATE: *4/20/89*

REVIEWED BY: *Duff Haring* DATE: *4/20/89*

R.2E.

T.32S.



LEGEND

- FOUND COUNTY SURVEYOR MONUMENT
- ◇ MONUMENT SET BY PLS 1071--RECORD SURVEY NO. 9242 (1982)
- SET 2 1/2" DIA. IRON POST WITH 2 1/2" DIA. BRASS CAP MONUMENT
- N.F.S.L. NATIONAL FOREST SYSTEM LANDS (Rogue River Nat'l Forest)
- CALCULATED LINES FROM TRAVERSE SURVEY
- PROPERTY BOUNDARY MARKED AND POSTED THIS SURVEY
- () RECORD SURVEY NO. 9242 PLS 1071 FEB. 20, 1982
- [] PUBLIC LAND SURVEY SYSTEM RECORD (GOVERNMENT RECORD)

HISTORY OF SURVEYS

THE ORIGINAL EXTERIOR BOUNDARIES OF SECTION 17 WERE SURVEYED BY TURNER & HOWARD UNDER CONTRACT NO. 142, DATED SEPTEMBER 9, 1870.

THE EAST BOUNDARY OF SECTION 17 WAS RETRACED BY PETER APPLIGATE UNDER CONTRACT NO. 651, DATED APRIL 25, 1896. SURVEYOR APPLIGATE REPORTED THAT HE COULD FIND NO EVIDENCE OF THE ONE-QUARTER CORNER FOR SECTIONS 16 AND 17 DURING THIS RETRACEMENT.

SECTION 17 WAS SUBDIVIDED BY ELK LUMBER COMPANY IN 1966. DURING THIS UNRECORDED SURVEY, ELK LUMBER COMPANY SET THE ONE-QUARTER CORNER FOR SECTIONS 16 AND 17 BY PROPORTIONATE MEASUREMENT, HAVING FOUND NO EVIDENCE OF THE LOST CORNER POINT. THEY ALSO SET MONUMENTS AT THE CENTER ONE-QUARTER, CENTER-NORTH ONE-SIXTEENTH, AND NORTHEAST ONE-SIXTEENTH CORNER POINTS FOR SECTION 17.

THE NORTH BOUNDARY OF SECTION 17 WAS RESURVEYED BY HAROLD L. CENTER, P.L.S. 1071, DURING JACKSON COUNTY RECORD SURVEY NO. 9242, DATED FEBRUARY 20, 1982. DURING THIS SURVEY, THE ONE-QUARTER CORNER FOR SECTIONS 8 AND 17 WAS REMONUMENTED FROM EVIDENCE AND THE EAST ONE-SIXTEENTH CORNER FOR SECTIONS 8 AND 17 WAS ESTABLISHED.

THE ONE-QUARTER CORNER FOR SECTIONS 17 AND 20, AND THE SECTION CORNER FOR SECTIONS 16, 17, 20, AND 21 WERE REMONUMENTED FROM EVIDENCE BY THE JACKSON COUNTY SURVEYOR IN 1985.

THE ONE-QUARTER CORNER FOR SECTIONS 17 AND 18 WAS REMONUMENTED FROM EVIDENCE BY THE JACKSON COUNTY SURVEYOR IN 1980.

THE SECTION CORNER FOR SECTIONS 8, 9, 16, AND 17 WAS REMONUMENTED FROM EVIDENCE BY THE JACKSON COUNTY SURVEYOR IN 1980.

NO OTHER SURVEYS ARE OF RECORD.

**** RECEIVED ****
Date 5-2-89 By SK
This survey consists of:
- 1 sheet(s) Map
- 8 page(s) Narrative
JACKSON COUNTY
SURVEYOR

A 6-inch diameter cedar bears N.46°50'W., 16.25 feet distance, scribed X BT.

A 14-inch diameter fir bears N.33°57'E., 12.60 feet distance, scribed NE1/16S17LS1071 BT.

NOTE: An Elk Lumber Company monument was found S.45°35'20"W., 0.81 feet distance from the corner point. I removed said monument and placed it inside my 2 1/2 inch diameter iron post monument.

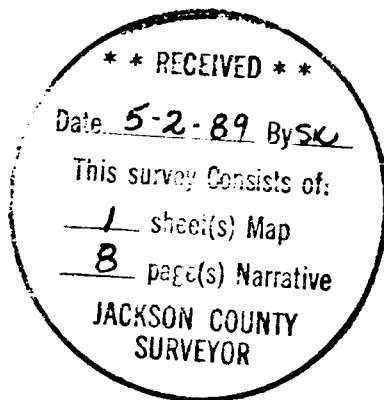
APRIL 3, 1989

HAROLD L. CENTER
REGISTERED PROFESSIONAL LAND SURVEYOR
OREGON CERTIFICATE NO. 1071

REGISTERED
PROFESSIONAL
LAND SURVEYOR

Harold L. Center

OREGON
HAROLD L. CENTER
JAN 20 1976
No. 1071

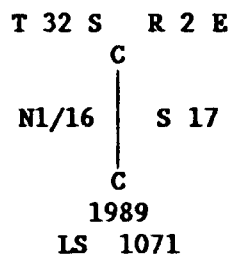


A 13-inch diameter fir bears N.74°27'W., 8.50 feet distance,
 scribed N1/16S17LS1071 BT.

NOTE: An Elk Lumber Company monument was found S.74°11'25"E., 1.34 feet
 distance from the corner point. I removed said Elk monument and placed it
 inside my iron post monument.

The center-north one-sixteenth corner for section 17, Township 32 South,
 Range 2 East, Willamette Meridian, Jackson County, Oregon.

At the corner point, I set a 2 1/2 inch diameter brass cap monument on a 2
 1/2 inch diameter iron post, 28 inches in the ground, marked:



From which:

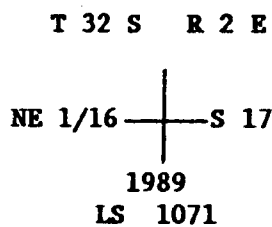
A 12-inch diameter fir bears N.18°29'W., 13.50 feet
 distance, scribed CN1/16S17LS1071 BT.

A 21-inch diameter fir bears S.85°03'E., 8.60 feet distance,
 scribed CN1/16S17LS1071 BT.

NOTE: An Elk Lumber Company monument was found S.14°04'37"W., 0.39 feet
 distance from the corner point. I removed said monument and placed it
 inside my 2 1/2 inch diameter iron post monument.

The northeast one-sixteenth corner for section 17, Township 32 South, Range
 2 East, Willamette Meridian, Jackson County, Oregon.

At the corner point, I set a 2 1/2 inch diameter brass cap monument on a 2
 1/2 inch diameter iron post, 26 inches in the ground, marked:



From which:

NOTE: An Elk Lumber Company monument was found S.76°04'52"E., 1.11 feet distance from the corner point. I removed said Elk monument and placed it inside my 2 1/2 inch diameter iron post monument.

The center one-quarter corner for section 17, Township 32 South, Range 2 East, Willamette Meridian, Jackson County, Oregon.

At the corner point, I set a 2 1/2 inch diameter brass cap monument on a 2 1/2 inch diameter iron post 27 inches in the ground, marked:

T 32 S R 2 E
C 1/4 — S 17
1989
LS 1071

From which:

A 14-inch diameter fir bears N.24°04'W., 31.00 feet distance, scribed C1/4S17LS1071 BT.

A 9-inch diameter cedar bears S.28°29'E., 28.55 feet distance, scribed X BT.

NOTE: An Elk Lumber Company monument was found S.36°58'08"W., 0.63 feet distance from the corner point. I removed said monument and placed it inside my 2 1/2 inch diameter iron post monument.

The north one-sixteenth corner for sections 16 and 17, Township 32 South, Range 2 East, Willamette Meridian, Jackson County, Oregon.

At the corner point, I set a 2 1/2 inch diameter brass cap monument on a 2 1/2 inch diameter iron post 27 inches in the ground, marked:

T 32 S R 2 E
N 1/16
S17 | S16
1989
LS 1071

From which:

An 11-inch diameter fir bears N.23°21'E., 24.50 feet distance, scribed N1/16S16LS1071 BT.

A dead tree, size indeterminate, bears S.07°52'W., 20.10 feet distance, with fragmentary scribing visible.

A 10-inch diameter cedar bears S.08°19'W., 15.33 feet distance, with a healed blaze.

The one-quarter corner for sections 17 and 20, Township 32 South, Range 2 East, Willamette Meridian, Jackson County, Oregon.

At the corner point, I found a 2 inch diameter lead filled expander on a 1 inch diameter iron pipe protruding 5 inches above ground, marked:

T 32 S R 2 E

17
20

CS 1/4 COR 1955

From which:

A 16-inch diameter fir bears S.05°18'E., 49.26 feet distance, with a healed blaze.

A 43-inch diameter fir bears N.55°13'E., 25.68 feet distance, with a partly healed blaze.

CORNERS ESTABLISHED THIS SURVEY

The one-quarter corner for sections 16 and 17, Township 32 South, Range 2 East, Willamette Meridian, Jackson County, Oregon.

At the corner point, I set a 2 1/2 inch diameter brass cap monument on a 2 1/2 inch diameter iron post 24 inches in the ground, marked:

T 32 S R 2 E

1/4
S 17 | S 16
1989
LS 1071

From which:

A 15-inch diameter fir bears N.19°18'E., 14.90 feet distance, scribed 1/4S16LS1071 BT.

A 9-inch diameter fir bears S.15°46'W., 13.90 feet distance, scribed 1/4S17LS1071 BT.

T 32 S R 2 E

8	9
17	16

C.S.
1981

From which:

A 36-inch diameter fir bears S.85°46'W., 39.66 feet distance, with no marks visible in an opened blaze.

An 8-inch diameter fir bears S.17°11'W., 23.50 feet distance, with fragmentary scribing visible. This tree is dead and is leaning over.

An 11-inch diameter cedar bears S.55°56'E., 36.05 feet distance, with scribing CS BT visible.

An 11-inch diameter fir bears N.16°51'E., 18.90 feet distance, with fragmentary scribing visible on a partly healed blaze.

A 9-inch diameter fir bears N.80°07'W., 16.95 feet distance, with a healed blaze.

The section corner for sections 16, 17, 20, and 21, Township 32 South, Range 2 East, Willamette Meridian, Jackson County, Oregon.

At the corner point, I found a 2 inch diameter lead filled expander on a 1 inch diameter iron pipe, protruding 3 inches above ground, marked:

T 32 S R 2 E

17	16
20	21

CS 1955

From which:

A 10-inch diameter fir bears N.21°26'W., 16.90 feet distance, with a healed blaze.

A 10-inch diameter fir bears N.81°46'E., 10.20 feet distance, with a healed blaze.

A dead tree, size indeterminate, bears S.44°14'E., 14.20 feet distance, with scribing 32R2S21BT visible.

An 8-inch diameter cedar bears S.15°18'E., 29.40 feet distance, with a healed blaze.

The one-quarter corner for sections 8 and 17, Township 32 South, Range 2 East, Willamette Meridian, Jackson County, Oregon.

At the corner point, I found a 2 1/2 inch diameter brass cap monument on a 2 1/2 inch diameter iron post, protruding 12 inches above ground, marked:

T 32 S R 2 E

S 8
1/4 ———
S 17

1982
LS 1071

From which:

An 8-inch diameter oak bears N.09°18'W., 45.40 feet distance, with a healed blaze.

A 10-inch diameter oak bears N.51°43'E., 32.40 feet distance, with a healed blaze.

A 12-inch diameter pine bears S.01°18'E., 231.80 feet distance, with a healed blaze.

The east one-sixteenth corner for sections 8 and 17, Township 32 South, Range 2 East, Willamette Meridian, Jackson County, Oregon.

At the corner point, I found a 2 1/2 inch diameter brass cap monument on a 2 1/2 inch diameter iron post, protruding 3 inches above ground, marked:

T 32 S R 2 E

S 8
E 1/16 ———
S 17

1982
LS 1071

From which:

A 24-inch diameter fir bears N.49°53'E., 25.05 feet distance, with no marks visible on a partly healed blaze.

A 19-inch diameter fir bears S.59°57'E., 15.05 feet distance, with fragmentary scribing visible on a partly healed blaze.

The section corner for sections 8, 9, 16, and 17, Township 32 South, Range 2 East, Willamette Meridian, Jackson County, Oregon.

At the corner point, I found a standard Jackson County Surveyor brass cap monument protruding 6 inches above ground, marked:

I also found an Elk Lumber Company monument near the north one-sixteenth corner point for sections 16 and 17.

I began the exterior traverse of section 17 at the one-quarter corner for sections 17 and 18. I traversed around the perimeter of section 17, tying all found corners to a closed traverse. The subdivision of section 17 was then calculated and the interior traverse was run. I found Elk Lumber Company monuments near the center one-quarter, center-north one-sixteenth, and northeast one-sixteenth corner points. I tied in the position of each found monument and described them later in this narrative. I removed each Elk monument as noted and placed them inside my monument at the true corner point.

The property boundary was posted with 6-foot aluminum posts with (54-2) property boundary signs attached. Trees along line were blazed and painted with red timber marking paint.

EQUIPMENT: This survey was performed utilizing a Wild T-2 Theodolite and a Sokkisha Red 2L Electronic Distance Meter, and a Nikon NTD-4 total station.

BASIS OF BEARING : Solar observation based on Record Survey No. 9242; East 1/2 of the North line of section 17.

CORNERS ACCEPTED FOR CONTROL

The one-quarter corner for sections 17 and 18, Township 32 South, Range 2 East, Willamette Meridian, Jackson County, Oregon.

At the corner point, I found a 2-inch diameter lead filled expander on a 1-inch diameter iron pipe, protruding 18 inches above ground, marked:

1949
T 32 S R 2 E
18 | 17
1/4 COR

From which:

A 19-inch diameter pine bears S.70°09'E., 96.00 feet distance, with scribing 1/4 S visible. This tree is now dead.

A 12-inch diameter oak bears S.60°44'W., 116.80 feet distance, with a healed blaze .

I marked the following new accessory:

A 19-ich diameter oak bears N.55°49'E., 268.26 feet distance, scribed 1/4S17LS1071 BT.

SURVEY NARRATIVE TO COMPLY WITH
PARAGRAPH 209.250 OREGON REVISED STATUTES

SURVEY FOR: ROGUE RIVER NATIONAL FOREST
P.O. BOX 520
MEDFORD, OREGON 97501

LOCATION: SECTION 17, TOWNSHIP 32 SOUTH, RANGE 2 EAST, WILLAMETTE
MERIDIAN, JACKSON COUNTY, OREGON.

PURPOSE: To establish property corners and to mark and post the
boundaries between Private and National Forest System Lands
within section 17.

HISTORY OF

SURVEYS: The original exterior boundaries of section 17 were surveyed
by Turner & Howard under contract No. 142, dated September 9,
1870.

The east boundary of section 17 was retraced by Peter
Applegate under contract No. 651 dated April 25, 1896.
Surveyor Applegate reported that he could find no evidence of
the one-quarter corner for sections 16 and 17 during this
retracement.

Section 17 was subdivided by Elk Lumber Company in 1966. A
record of this survey can be found at the Boise Cascade Lumber
Company Medford Office. No official survey was filed with the
Jackson County Surveyor. Elk lumber company's surveyor, B.
Brandt, searched for but did not find any original evidence of
the one-quarter corner for sections 16 and 17 during this
survey.

The north boundary of section 17 was resurveyed by Harold L.
Center, PLS 1071, during Jackson County Record Survey No.
9242, dated February 25, 1982. During this survey, the
one-quarter corner for sections 8 and 17 was remonumented from
evidence, and the east one-sixteenth corner for sections 8 and
17 was established.

The one-quarter corner for sections 17 and 20, and the section
corner for sections 16,17,20, and 21 were remonumented from
evidence by the Jackson County Surveyor in 1955.

The one-quarter corner for sections 17 and 18 was remonumented
from evidence by the Jackson County Surveyor in 1960.

The section corner for sections 8,9,16 and 17 was remonumented
from evidence by the Jackson County Surveyor in 1981.

No other surveys are of record.

PROCEDURE: I began this survey by performing an investigation of the
controlling corner points required to subdivide the northeast
one-quarter of section 17.

The exterior controlling corners were found and verified as
being remonumented original corner points, with the exception
of the one-quarter corner for sections 16 and 17. In the
general area, I found an Elk Lumber Company monument as
described by surveyor Brandt.