

11531

1988 OSHD CRATER LAKE AVENUE RESURFACING PROJECT  
RESTORATION OF GOVERNMENT CORNERS

Date: 22 February 1989  
Reestablished By:  
Oregon State Highway Division  
2690 N. Pacific Highway  
Medford, Oregon 97501

Surveyor:  
Vernon C. Neiswanger, P.L.S. 617

Purpose:  
Reestablish government corners destroyed during resurfacing project located on Crater Lake Avenue northerly of City of Medford.

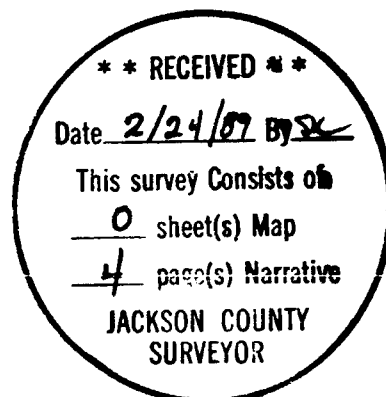
Corners:  
T. 36 S., R. 1 W., Section Corner of Sections 29, 30, 31, 32  
T. 37 S., R. 1 W.,  $\frac{1}{4}$  Corner of Sections 5 and 6  
T. 37 S., R. 1 W.,  $\frac{1}{4}$  Corner of Sections 7 and 8

Procedure:  
Prior to resurfacing project reference ties were set for each of the above mentioned corners. The original monuments were brass caps set flush with the pavement surface. After completion of the project new brass caps were set in 6" diameter x 12" depth poured concrete collars. Location of the new monuments were reestablished from the reference ties set from the original monuments. After resetting the monuments 3 new references were set for each monument. The new references are 5/8" x 18" rebar with aluminum caps punched and marked "RP".

REGISTERED  
PROFESSIONAL  
LAND SURVEYOR

*Vernon C. Neiswanger*

OREGON  
JULY 12, 1963  
VERNON C. NEISWANGER  
617



SURVEY FOR:

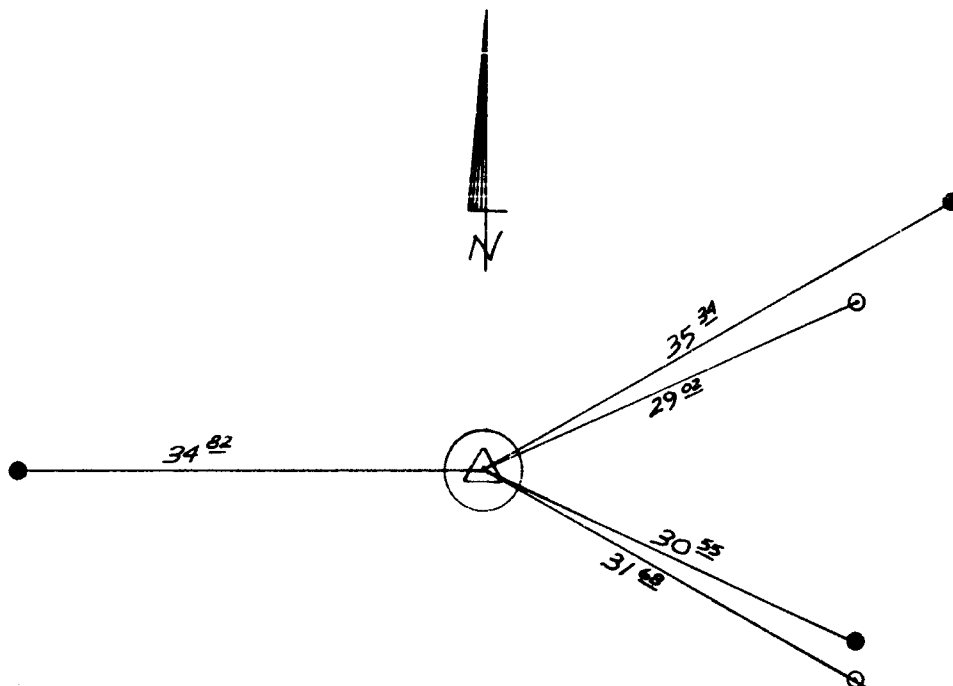
Reestablishment of Government Corner

CORNER:

T. 37 S., R. 1 W., 1/4 Corner common to Sects. 7 & 8

SURVEY BY:

Oregon State Highway Division  
 2690 N. Pacific Highway  
 Medford, Oregon 97501



LEGEND



2" Brass Cap in 6" diam. x 12" depth concrete collar



Concrete Nail Original Reference Tie



Set #5 Rebar with Aluminum Cap new Reference Tie.

Cap Stamped "RP"

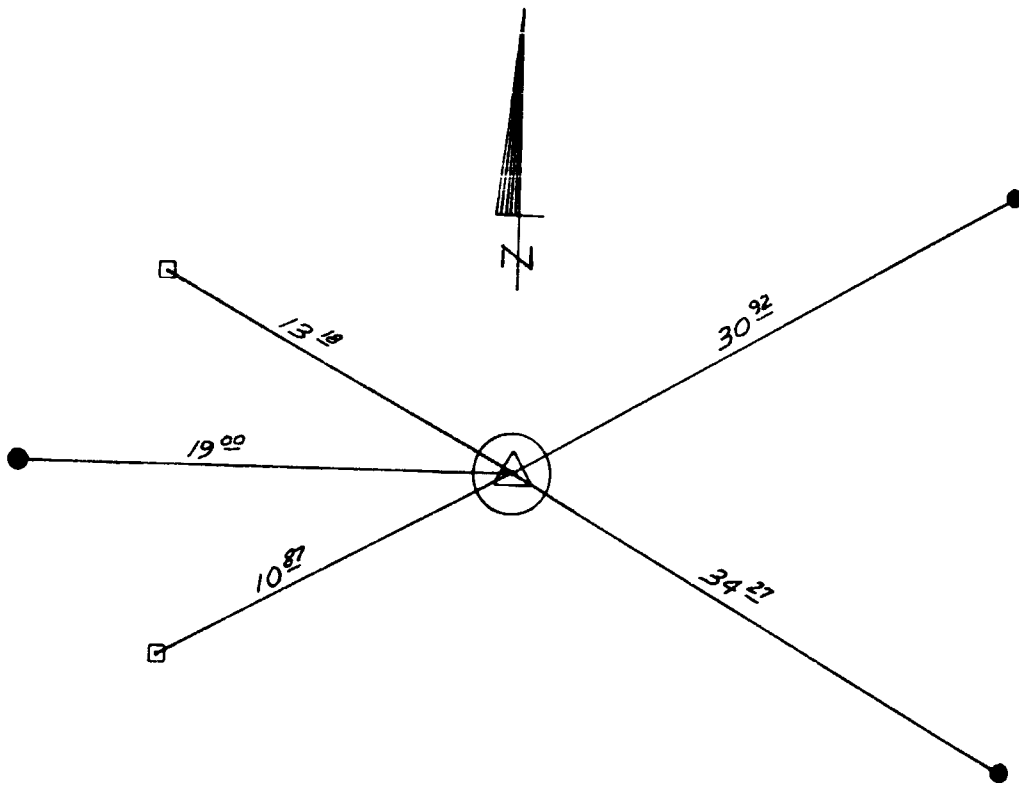
I hereby certify that the monument shown hereon was reestablished 8 February 1989 under my direct supervision in accordance with the original reference ties and new reference ties were set using #5 rebar with aluminum cap stamped "RP"

*Vernon C. Neiswanger*  
 Vernon C. Neiswanger, P.L.S. 617




REGISTERED  
 PROFESSIONAL  
 LAND SURVEYOR

*Vernon C. Neiswanger*  
 OREGON  
 JULY 12, 1963  
 VERNON C. NEISWANGER  
 617

SURVEY FOR:  
 Reestablishment of Government Corner  
 CORNER:  
 T. 37 S., R. 1 W., ¼ Corner common to Sects. 5 & 6  
 SURVEY BY:  
 Oregon State Highway Division  
 2690 N. Pacific Highway  
 Medford, Oregon 97501



LEGEND

-  2" Brass Cap in 6" diam. x 12" depth concrete collar
-  Tack in Guardrail Post Original Reference Tie
-  Set #5 Rebar with Aluminum Cap new Reference Tie.  
Cap Stamped "RP"

I hereby certify that the monument shown hereon was reestablished 8 February 1989 under my direct supervision in accordance with the original reference ties and new reference ties were set using #5 rebar with aluminum cap stamped "RP"

*Vernon C. Neiswanger*  
 Vernon C. Neiswanger, P.L.S. 617

REGISTERED  
 PROFESSIONAL  
 LAND SURVEYOR

*Vernon C. Neiswanger*  
 OREGON  
 JULY 12, 1963  
 VERNON C. NEISWANGER  
 617

11531

SURVEY FOR:

Reestablishment of Government Corner

CORNER:

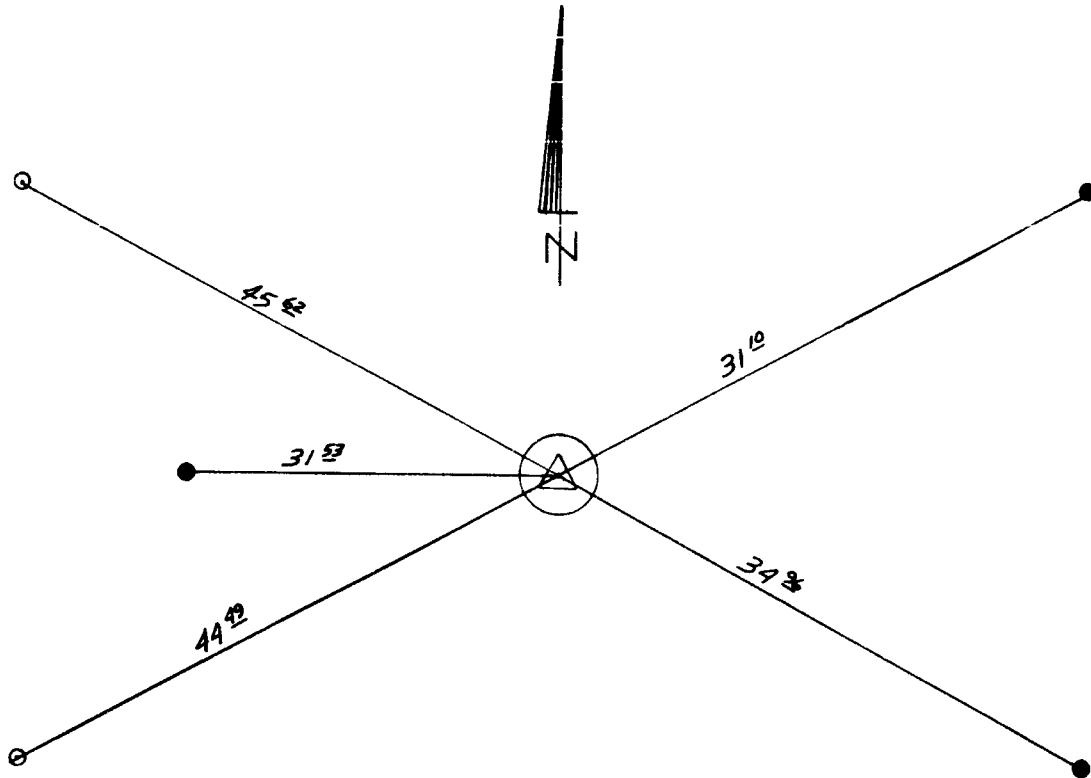
T. 36 S., R. 1 W., Corner common to Sects. 29, 30, 31, 32

SURVEY BY:

Oregon State Highway Division

2000 N. Pacific Highway

Medford, Oregon 97501



LEGEND



2" Brass Cap in 6" diam. x 12" depth concrete collar

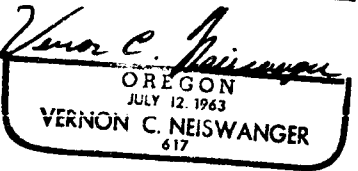
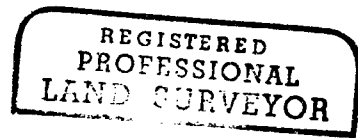


Concrete Nail Original Reference Tie



Set #5 Rebar with Aluminum Cap new Reference Tie.  
Cap Stamped "RP"

I hereby certify that the monument shown hereon was reestablished 8 February 1989 under my direct supervision in accordance with the original reference ties and new reference ties were set using #5 rebar with aluminum cap stamped "RP"



*Vernon C. Neiswanger*  
Vernon C. Neiswanger, P.L.S. 617