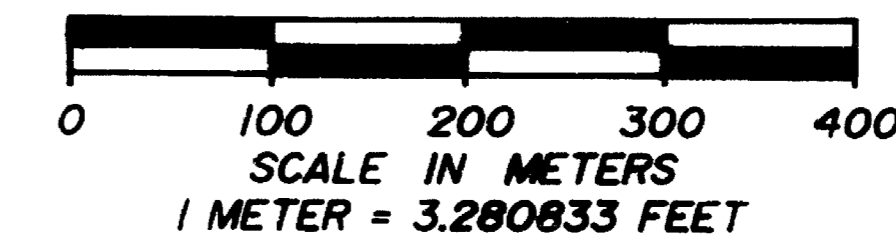


MAP OF SURVEY FOR ROGUE RIVER NATIONAL FOREST

P.O. BOX 520
MEDFORD, OREGON
DECEMBER 15, 1988



BASIS OF BEARING: SOLAR OBSERVATION



CERTIFICATE OF SURVEY

I, HAROLD L. CENTER, REGISTRATION NO. 1071, REGISTERED PROFESSIONAL LAND SURVEYOR, STATE OF OREGON, HEREBY CERTIFY THAT THIS PLAT CORRECTLY REPRESENTS A SURVEY MADE BY ME OR UNDER MY DIRECT SUPERVISION IN CONFORMANCE WITH THE LAWS OF THE STATE OF OREGON AT THE REQUEST OF THE UNITED STATES FOREST SERVICE.

REGISTERED
PROFESSIONAL
LAND SURVEYOR

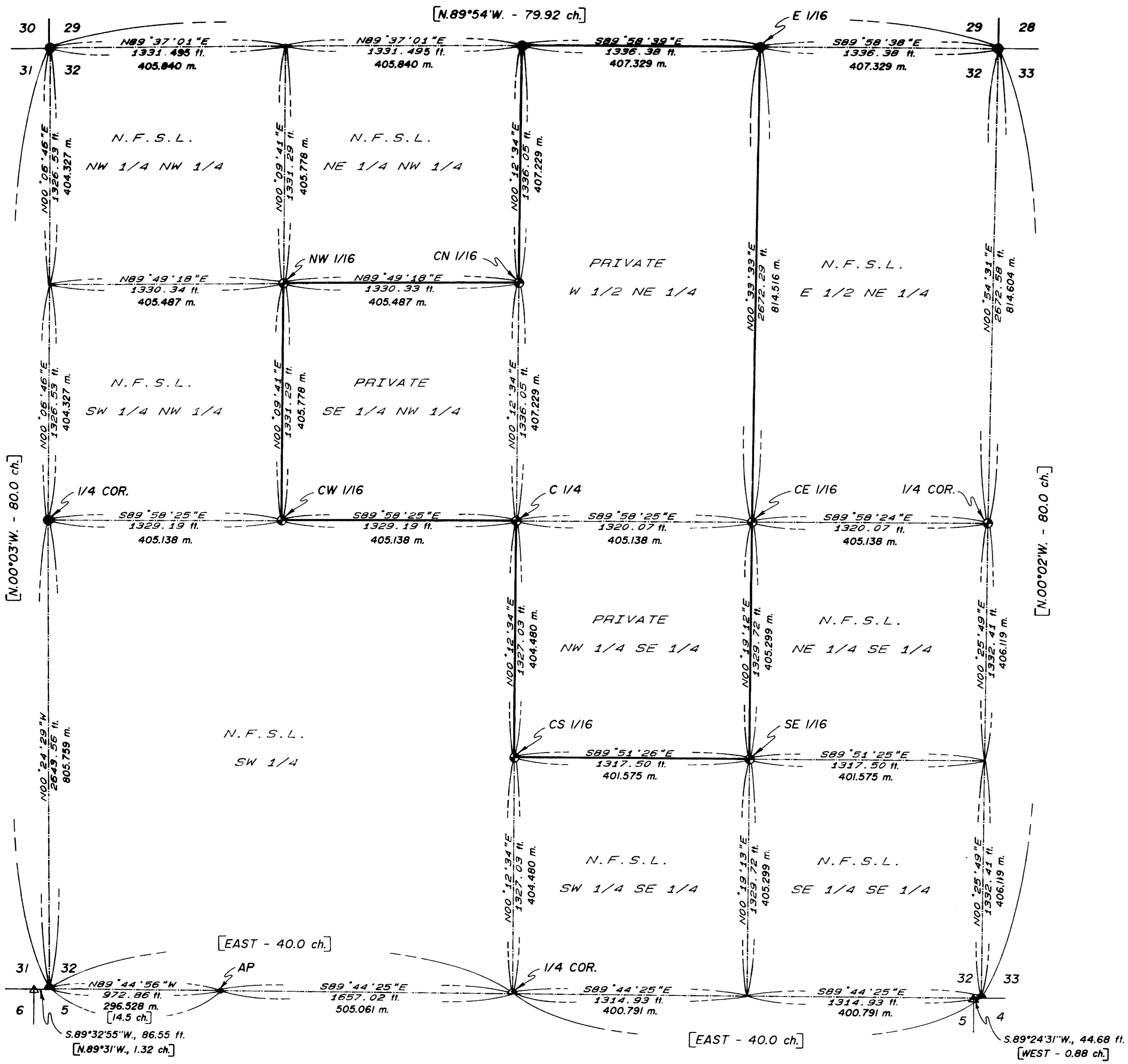
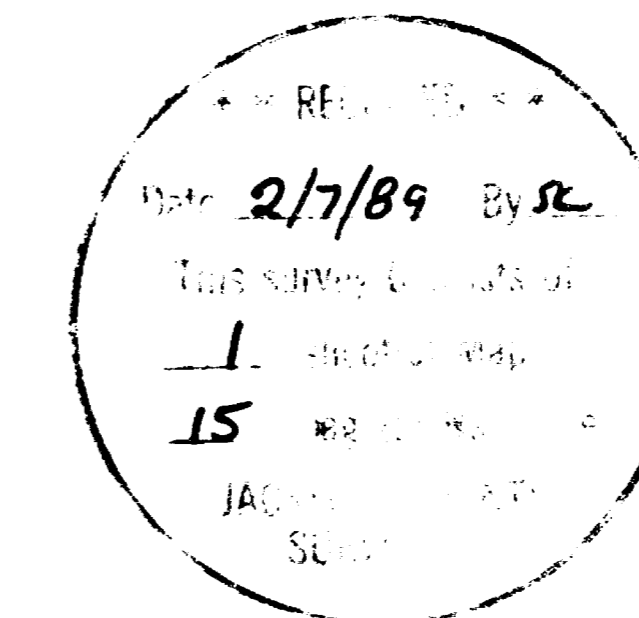
Harold L. Center
HAROLD L. CENTER
JULY 30, 1978
No. 1071

PROJECT NO. 88-17

U.S. DEPARTMENT OF AGRICULTURE
FOREST SERVICE
REGION 6 - ROGUE RIVER NATIONAL FOREST

DEPENDENT RESURVEY
AND
SECTION SUBDIVISION
SECTION 32, T.39S., R.1E., W.M.
JACKSON COUNTY, OREGON

REVIEWED BY: *Andy Ball* DATE: *1/12/89*
REVIEWED BY: *Don R. Lewis* DATE: *1/30/89*



LEGEND

- FOUND BUREAU OF LAND MANAGEMENT MONUMENT
- SET 2 1/2" DIAMETER IRON POST WITH 2 1/2" BRASS CAP
- SET 5/8" DIAMETER IRON PIN WITH A 1" ALUMINUM CAP (AP) REMONUMENTED ORIGINAL LINE TREE AND MARKED AS ANGLE PT.
- N.F.S.L. NATIONAL FOREST SYSTEM LANDS (ROGUE RIVER NAT'L FOREST)
- LINES CALCULATED FROM TRAVERSE SURVEY
- PROPERTY BOUNDARY MARKED & POSTED THIS SURVEY
- ▲ REMONUMENTED CC FOR T405 WITH 2 1/2" dia. Iron Post
- [] PUBLIC LAND SURVEY SYSTEM RECORD (GOVT. RECORD)
- FOUND BUREAU OF LAND MANAGEMENT MONUMENT FOR STANDARD SECTION CORNER
- SET 2-1/2 INCH DIAMETER IRON POST WITH A 2-1/2 INCH DIAMETER BRASS CAP FOR STANDARD 1/4 CORNER.

HISTORY OF SURVEYS

THE 9th STANDARD PARALLEL SOUTH, RANGE 1 EAST, WILLAMETTE MERIDIAN, WAS SURVEYED BY BUTLER IVES AND GEORGE HYDE UNDER CONTRACT NO. 47 DATED AUGUST 18, 1854. THIS SURVEY INCLUDED THE ESTABLISHMENT OF THE SOUTH BOUNDARY OF SECTION 32, TOWNSHIP 39 SOUTH, RANGE 1 EAST, WILLAMETTE MERIDIAN. THE REMAINING EXTERIOR BOUNDARIES OF SECTION 32 WERE SURVEYED BY ORMOND FLETCHER UNDER CONTRACT NO. 663 DATED MAY 21, 1896. A PORTION OF TOWNSHIP 40 SOUTH, RANGE 1 EAST, WILLAMETTE MERIDIAN, WAS SURVEYED BY RUFUS MOORE UNDER CONTRACT NO. 637 DATED MAY 15, 1895. DURING THIS SURVEY, MOORE CHANGED THE STANDARD SECTION CORNERS FOR SECTION 32 TO ONES OF MINIMUM CONTROL FOR TOWNSHIP 39 SOUTH, RANGE 1 EAST ONLY, AND ESTABLISHED CLOSING SECTION CORNERS FOR SECTION 5, TOWNSHIP 40 SOUTH, RANGE 1 EAST, ON THE 9th STANDARD PARALLEL.

THE BUREAU OF LAND MANAGEMENT, DIVISION OF CADASTRAL SURVEYS, REMONUMENTED THE STANDARD CORNERS FOR SECTIONS 31-32 AND SECTIONS 32-33 FROM EVIDENCE IN 1967. THEY ALSO REMONUMENTED THE WEST ONE-QUARTER CORNER, THE NORTH ONE-QUARTER CORNER, AND BOTH SECTION CORNERS ON THE NORTH BOUNDARY OF SECTION 32 FROM EVIDENCE IN THE SAME YEAR.

NO OTHER SURVEYS ARE OF RECORD.

SURVEY NO. **11499**
PAGE 15 OF 15

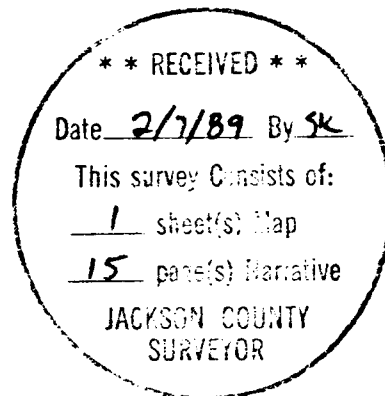
and marked the following accessories:

A 35-inch diameter fir bears N.05°10'W., 10.52 feet distance, scribed NW1/16S32LS1071 BT.

An 8-inch diameter fir bears S.35°31'W., 40.47 feet distance, scribed NW1/16S32LS1071 BT.

DECEMBER 15, 1988

HAROLD L. CENTER
REGISTERED PROFESSIONAL LAND SURVEYOR
OREGON CERTIFICATE NO. 1071



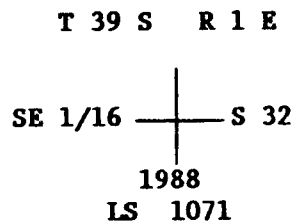
and mark the following accessories:

An 8-inch diameter fir bears N.72°13'E., 34.90 feet distance, scribed E1/16S29LS1071 BT.

A 7-inch diameter fir bears S.33°18'W., 33.84 feet distance, scribed X BT.

The southeast one-sixteenth corner for section 32, Township 39 South, Range 1 East, Willamette Meridian, Jackson County, Oregon.

At the corner point, I set a 2 1/2 inch diameter iron post 29 inches in the ground, with a 2 1/2 inch diameter brass cap attached, marked:



and marked the following accessories:

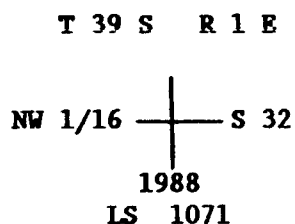
A 14-inch diameter fir bears N.38°05'E., 23.23 feet distance, scribed X BT.

A 13-inch diameter fir bears S.46°10'E., 13.41 feet distance, scribed SE1/16S32LS1071 BT.

NOTE: An unrecorded 3/4 inch diameter iron pipe, protruding 24 inches above ground, bears N.47°39'23"W., 33.35 feet distance.

The northwest one-sixteenth corner for section 32, Township 39 South, Range 1 East, Willamette Meridian, Jackson County, Oregon.

At the corner point, I set a 2 1/2 inch diameter iron post 28 inches in the ground, with a 2 1/2 inch diameter brass cap attached, marked:



and mark the following accessories:

A granite stone, size indeterminate, bears N.31°35'E., 41.38 feet distance to chiseled X. Stone marked B_XO.

A 21-inch diameter fir bears S.21°43'E., 9.70 feet distance, scribed CE1/16S32LS1071 BT.

The center-west one-sixteenth corner for section 32, Township 39 South, Range 1 East, Willamette Meridian, Jackson County, Oregon.

At the corner point, I set a 2 1/2 inch diameter iron post 28 inches in the ground, with a 2 1/2 inch diameter brass cap attached, marked:

T 39 S R 1 E

W 1/16
C ————— C
S 32

1988
LS 1071

and marked the following accessories:

A 7-inch diameter fir bears S.13°28'E., 17.58 feet distance, scribed CW1/16S32LS1071 BT.

A 24-inch diameter fir bears N.51°32'W., 29.84 feet distance, scribed CW1/16S32LS1071 BT.

The east one-sixteenth corner for sections 29 and 32, Township 39 South, Range 1 East, Willamette Meridian, Jackson County, Oregon.

At the corner point, I set a 2 1/2 inch diameter iron post 29 inches in the ground, with a 2 1/2 inch diameter brass cap attached, marked:

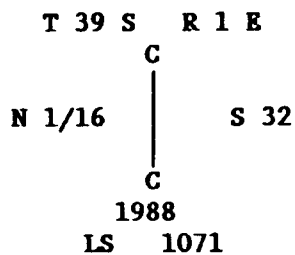
T 39 R 1 E

S 29
E 1/16 —————
S 32

1988
LS 1071

The center-north one-sixteenth corner for section 32, Township 39 South, Range 1 East, Willamette Meridian, Jackson County, Oregon.

At the corner point, I set a 2 1/2 inch diameter iron post 28 inches in the ground, with a 2 1/2 inch diameter brass cap attached, marked:



and mark the following accessories:

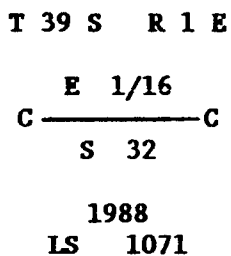
A 12-inch diameter fir bears N.04°29'W., 13.21 feet distance, scribed CN1/16S32LS1071 BT.

An 8-inch diameter fir bears N.77°30'W., 28.90 feet distance, scribed CN1/16S32LS1071 BT.

NOTE: An unrecorded 1 1/4 inch diameter iron pipe, protruding 40 inches above ground, bears N.66°24'47"W., 8.85 feet distance.

The center-east one-sixteenth corner for section 32, Township 39 South, Range 1 East, Willamette Meridian, Jackson County, Oregon.

At the corner point, I set a 2 1/2 inch diameter iron post 20 inches in the ground, with a 2 1/2 inch diameter brass cap attached, marked:



T 39 S R 1 E

C 1/4 — S 32
|
1988
LS 1071

and mark the following accessories:

A 10-inch diameter fir bears S.06°53'W., 14.97 feet distance, scribed C1/4S32LS1071 BT.

An 11-inch diameter madrone bears S.43°58'W., 35.58 feet distance, scribed C1/4S32LS1071 BT.

The center-south one-sixteenth corner for section 32, Township 39 South, Range 1 East, Willamette Meridian, Jackson County, Oregon.

At the corner point, I set a 2 1/2 inch diameter iron post 22 inches in the ground, with a 2 1/2 inch diameter brass cap monument attached, marked:

T 39 S R 1 E

C
|
S 1/16 — S 32
|
C
1988
LS 1071

And mark the following accessories:

A 31-inch diameter fir bears S.82°06'E., 6.60 feet distance, scribed CS1/16S32LS1071 BT.

A 9-inch diameter fir bears S.36°47'W., 18.10 feet distance, scribed X BT.

NOTE: An unrecorded 1 1/4 inch diameter iron pipe, protruding 30 inches above ground, bears N.53°07'16"W., 47.79 feet distance.

AP S32

1988

LS 1071

and mark the following accessories:

A 19-inch diameter fir bears N.05°22'W., 7.10 feet distance, scribed APS32LS1071 BT.

A 7-inch diameter fir bears N.53°56'E., 12.90 feet distance, scribed X BT.

MONUMENTS ESTABLISHED THIS SURVEY

The Standard one-quarter corner for section 32 only, Township 39 South, Range 1 East, Willamette Meridian, Jackson County, Oregon.

At the corner point, I set a 2 1/2 inch diameter iron post 32 inches in the ground, with a 2 1/2 inch diameter brass cap attached, marked:

T 39 S R 1 E
S C

1/4 S 32

1988

LS 1071

and mark the following accessories:

A 5-inch diameter fir bears S.76°37'W., 8.48 feet distance, scribed X BT.

A 21-inch diameter fir bears N.31°59'E., 46.14 feet distance, scribed 1/4S32LS1071 BT.

The center one-quarter corner for section 32, Township 39 South, Range 1 East, Willamette Meridian, Jackson County, Oregon.

At the corner point, I set a 2 1/2 inch diameter iron post 32 inches in the ground, with a 2 1/2 inch diameter brass cap monument attached, marked:

The Closing Corner for sections 5 and 6, Township 40 South, Range 1 East, Willamette Meridian, Jackson County, Oregon.

At the corner point, as determined from the recovered original bearing trees, I set a 2 1/2 inch diameter iron post, 29 inches in the ground, with a 2 1/2 inch diameter brass cap attached, marked:

T 39 S R 1 E

S31

C	C
S6	S5
T 40 S	R 1 E

1988

LS 1071

From which, the following accessories:

A 41-inch diameter pine bears S.57°54'E., 57.36 feet distance, with scribing T40SR1ES5 BT visible on burnt side of tree.

A root hole, with a down madrone along side (axe marks visible) bears S.37°30'W., 27.69 feet distance.

I marked the following new accessory:

A 13-inch diameter fir bears S.19°53'W., 39.84 feet distance, scribed T40SR1ES6LS1071 BT.

NOTE: Corner is set in an old trail.

A line tree on the south boundary of section 32, described by Ives & Hyde as being a 40 inch diameter redwood.

At the corner point, I found a 44-inch diameter cedar tipped over toward the southeast. I remonumented this angle point with a 5/8 inch diameter iron pin, set in the center of the root hole, with a 1-inch diameter aluminum cap attached, marked:

From which, the follow accessories:

A 31-inch diameter pine bears N.28°19'W., 63.40 feet distance, with fragmentary scribing visible in an opened blaze.

A broken stump, size indeterminate, bears S.56°55'E., 11.90 feet distance, with scribing 1/4S visible on a piece of loose wood beside stump.

I marked the following new accessory:

A 46-inch diameter pine bears N.61°01'E., 28.70 feet distance, scribed 1/4S33LS1071 BT.

The Closing Corner for sections 4 and 5, Township 40 South, Range 1 East, Willamette Meridian, Jackson County, Oregon.

At the corner point, I found a 17"X 10"X 6" stone firmly set, with CC marked on the south side, 4 grooves on the east side, and 2 grooves on the west side.

From which, the following accessories:

A 36-inch diameter pine bears S.07°16'E., 94.78 feet distance, with a healed blaze.

A 19-inch diameter pine bears S.33°36'W., 10.60 feet distance, with scribing R1E S5 BT visible on a partly healed blaze.

I remonumented said stone with a 2 1/2 inch diameter iron post, 30 inches in the ground, with a 2 1/2 inch diameter brass cap attached, marked:

T 39 S R 1 E

CC

S5 S4

T 40 S R 1 E

1988

LS 1071

NOTE: The original stone was burried on the west side of the iron post.

U.S. DEPT OF INTERIOR
UNLAWFUL TO DISTURB

S	C
T39S	R1E
S32	S33

1967
BUR. OF LAND MANAGEMENT
CADASTRAL SURVEYS

and the following accessories:

A 37-inch diameter fir bears N.25°27'W., 39.56 feet distance, with a healed blaze.

A root hole, with burnt wood inside, bears N.04°34'W., 44.29 feet distance, with no marks visible.

A 25-inch diameter fir bears N.08°58'E., 32.71 feet distance, with a healed blaze.

A pine, bears S.12°38'E., 66.67 feet distance, with a healed blaze. This tree was reported as being destroyed by Rufus Moore in 1895.

NOTE: The Closing Corner for sections 4 and 5, Township 40 South, Range 1 East, W.M., bears S.89°24'31"W., 44.68 feet distance.

CORNERS REMONUMENTED FROM EVIDENCE THIS SURVEY

One-quarter corner for sections 32 and 33, Township 39 South, Range 1 East, Willamette Meridian, Jackson County, Oregon.

At the corner point, as determined from the recovered original bearing trees, I set a 2 1/2 inch diameter iron post 32 inches in the ground, with brass cap attached and marked:

T 39 S R 1 E

	1/4	
S32		S33
	1988	
LS	1071	

An 11-inch diameter fir bears N.23°12'W., 10.90 feet distance, with a healed blaze.

A broken and decayed stump, size indeterminate, bears N.08°37'E., 13.78 feet distance, with no marks visible.

Standard Corner for sections 31 and 32, Township 39 South, Range 1 East, Willamette Meridian, Jackson County, Oregon.

At the corner point, I found a standard Bureau of Land Management monument protruding 10 inches above ground, marked:

U.S. DEPT OF INTERIOR
UNLAWFUL TO DISTURB

S	C
T39S	R1E
S31	S32

1967
BUR. OF LAND MANAGEMENT
CADASTRAL SURVEYS

and the following accessories:

A 15-inch diameter fir bears N.43°21'E., 23.80 feet distance, with a healed blaze.

A 13-inch diameter fir bears N.73°16'W., 38.92 feet distance, with a healed blaze.

A 43-inch diameter pine bears N.14°07'W., 25.07 feet distance, with a healed blaze.

NOTE: The Closing Corner for Sections 5 and 6, Township 40 South, Range 1 East, W.M., bears S.89°32'55"W., 86.55 feet distance.

Standard Corner for sections 32 and 33, Township 39 South, Range 1 East, Willamette Meridian, Jackson County, Oregon.

At the corner point, I found a standard Bureau of Land Management monument protruding 16 inches above ground, marked:

A 28-inch diameter fir bears N.24°14'W., 29.72 feet distance, with fragmentary scribing visible on a partly healed blaze.

A broken and decayed stump, size indeterminate, bears N.06°41'W., 6.10 feet distance, with scribing T39°R visible on a decayed face.

A 41-inch diameter pine bears N.85°37'E., 37.20 feet distance, with no marks visible on a partly healed blaze.

An 11-inch diameter fir bears S.55°19'E., 13.00 feet distance, with a healed blaze.

A broken stump, size indeterminate, bears S.08°50'W., 49.06 feet distance, with no marks visible.

A 55-inch diameter pine bears S.60°32'W., 9.20 feet distance, with no marks visible on a partly healed blaze.

One-quarter corner for sections 31 and 32, Township 39 South, Range 1 East, Willamette Meridian, Jackson County, Oregon.

At the corner point, I found a standard Bureau of Land Management monument protruding 6 inches above ground, marked:

U.S. DEPT OF INTERIOR
UNLAWFUL TO DISTURB

T39S R1E
1/4

S31 | S32

1967

BUR. OF LAND MANAGEMENT
CADASTRAL SURVEYS

and the following accessories:

A 10-inch diameter fir bears S.47°29'E., 8.30 feet distance, with a healed blaze.

A broken and decayed stump, size indeterminate, bears S.55°09'W., 8.40 feet distance, with fragmentary scribing visible on a loose piece of wood next to stump.

At the corner point, I found a standard Bureau of Land Management monument protruding 6 inches above ground, marked:

U.S. DEPT OF INTERIOR
UNLAWFUL TO DISTURB

T39S R1E
S29
1/4 _____
S32

1967
BUR. OF LAND MANAGEMENT
CADASTRAL SURVEYS

and the following accessories:

A 16-inch diameter pine bears S.00°26'W., 14.38 feet distance, with scribing 1/4SBT visible on a partly healed blaze.

A 9-inch diameter fir bears N.20°51'W., 49.89 feet distance, with a healed blaze.

A pine stump, size indeterminate, bears N.20°04'W., 21.71 feet distance, with fragmentary scribing visible on a loose piece of wood next to stump.

Section corner for sections 29, 30, 31 and 32, Township 39 South, Range 1 East, Willamette Meridian, Jackson County, Oregon.

At the corner point, I found a standard Bureau of Land Management monument protruding 2 inches above ground, marked:

U.S. DEPT OF INTERIOR
UNLAWFUL TO DISTURB

T39S R1E
S30 | S29
S31 | S32

1967
BUR. OF LAND MANAGEMENT
CADASTRAL SURVEYS

and the following accessories:

CORNERS ACCEPTED FOR CONTROL

Section corner for sections 28, 29, 32 and 33, Township 39 South, Range 1 East, Willamette Meridian, Jackson County, Oregon.

At the corner point, I found a standard Bureau of Land Management monument protruding 6 inches above ground, marked:

U.S. DEPT OF INTERIOR
UNLAWFUL TO DISTURB

T39S	R1E
S29	S28
S32	S33

1967
BUR. OF LAND MANAGEMENT
CADASTRAL SURVEYS

and the following accessories:

A 33-inch diameter pine snag bears N.40°15'W., 24.10 feet distance, with scribing T39R1ES29 BT visible.

A 12-inch diameter fir bears N.25°36'W., 17.90 feet distance, with a healed blaze.

A 7-inch diameter fir bears N.40°36'E., 5.77 feet distance, with a healed blaze.

A 13-inch diameter madrone bears N.60°06'E., 37.30 feet distance, with fragmentary scribing visible.

A 45-inch diameter fir bears S.20°56'E., 46.96 feet distance, with a healed blaze.

A broken stump, size indeterminate, bears S.24°56'W., 37.23 feet distance, with scribing T39R1ES32 visible on loose piece of wood by stump.

A 6-inch diameter fir bears S.40°24'W., 9.97 feet distance, with a healed blaze.

One-quarter corner for sections 29 and 32, Township 39 South, Range 1 East, Willamette Meridian, Jackson County, Oregon.

An extensive evaluation was then made along the south boundary of section 32. Several trees were found with blazes dating to the original 1854 survey. Others were found dating to 1935, and still others dating to 1967. The original line tree described by Ives & Hyde as being a 40-inch Redwood was recovered. It is now a 44-inch Cedar, tipped over toward the southeast. I remonumented this angle point by placing a 5/8-inch diameter iron pin in the center of the root hole of said line tree, and placed a 1-inch diameter aluminum cap on top of iron pin marked as an Angle Point described later in this narrative. Continuing my investigation, I recovered the original 1895 Rufus Moore Closing Corners for section 5, Township 40 South, Range 1 East, W.M. Said corners were remonumented and are described later in this narrative.

No evidence of the original south one-quarter corner for section 32 could be found. I then computed a proportional position for the lost one-quarter corner, calculated the section subdivision, and began the interior traverse for section 32. I found several unrecorded monuments, mostly 1 1/4-inch diameter iron pipes protruding anywhere from 2 to 3.3 feet above ground, at positions in the general area of some of the interior corner points. Trees that appeared to be accessories to these unrecorded monuments were also found. No scribing could be found in these trees. These monuments were included as part of the interior traverse. Utilizing the recovered data, new search areas were computed for the lost, south one-quarter corner. I returned to the lost corner position and continued my investigation. No evidence could be found. I therefore set the south one-quarter corner for section 32 at proportionate distance, utilizing the recovered line tree, on the true parallel of latitude.

All traverses were part of a closed traverse. Random lines were run, and offsets to the true line were calculated for the property boundary posting. The lines were marked to U.S. Forest Service standards, using 6-foot aluminum posts with (54-2) property boundary signs attached. Trees along line were blazed and painted with red timber marking paint. All monuments set were 2 1/2 inch diameter, 32-inch long iron posts, with a 2 1/2 inch diameter brass cap attached unless otherwise specified.

BASIS OF BEARING : Solar Observation

EQUIPMENT : Equipment used throughout this survey include a Wild T-2 Theodolite, Sokkisha Red 2L Electronic Distance Meter, Nikon NTD-4 Total Station, three tripods, and two Lietz single tilting prisms.

SURVEY NARRATIVE TO COMPLY WITH
PARAGRAPH 209.250 OREGON REVISED STATUTES

SURVEY FOR: ROGUE RIVER NATIONAL FOREST
P.O. BOX 520
MEDFORD, OREGON 97501

LOCATION: SECTION 32, TOWNSHIP 39 SOUTH, RANGE 1 EAST, WILLAMETTE
MERIDIAN, JACKSON COUNTY, OREGON

PURPOSE: To set monuments and to mark and post the boundaries between
National Forest and Private lands within section 32.

HISTORY OF SURVEYS : The 9th Standard Parallel South, Range 1 East, Willamette
Meridian, was surveyed by Butler Ives & George Hyde under
contract No.47 dated August 18, 1854. This survey included
the establishment of the south boundary of section 32,
Township 39 South, Range 1 East, W.M. The remaining exterior
boundaries of section 32 were surveyed by Ormond Fletcher
under contract No. 663 dated May 21, 1896. A portion of
Township 40 South, Range 1 East, W.M. was surveyed by Rufus
Moore under contract No. 637 dated May 15, 1895. During this
survey, Moore changed the Standard Section Corners for
section 32 to ones of minimum control for Township 39 South,
Range 1 East only, and established Closing Section Corners
for section 5, Township 40 South, Range 1 East on the 9th
Standard Parallel.

The Bureau of Land Management, Division of Cadastral Surveys,
remonumented the Standard Corners for Sections 31-32 &
Sections 32-33 from evidence in 1967. They also remonumented
the West one-quarter corner, the North one-quarter corner,
and both section corners on the north boundary of section 32
from evidence in the same year.

No other surveys are of record.

PROCEDURE: Prior to commencement of this survey, I performed an
investigation of all controlling corner points for section
32. Monuments set by the Bureau of Land Management in 1967
were found & verified as being remonumented original corner
points. During my initial investigation corner evidence for
the East and South one-quarter corner points could not be
found. I then began a series of traverses, tying in
topographic features and recovered blazed trees along the
property line. search areas were then calculated for the two
missing one-quarter corners and extensive investigations were
performed. Upon further evaluation, original bearing tree
information was found for the East one-quarter corner point.