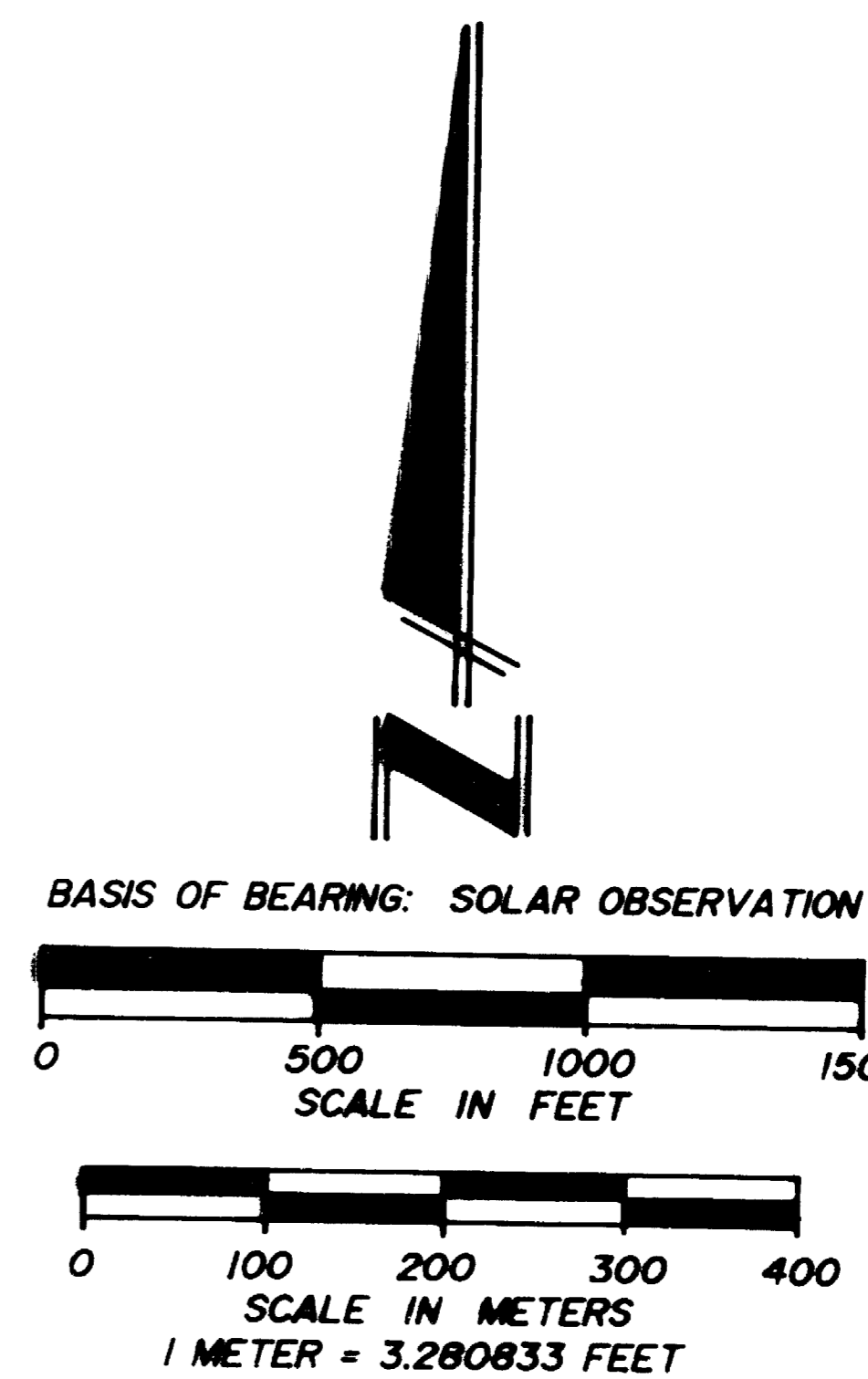
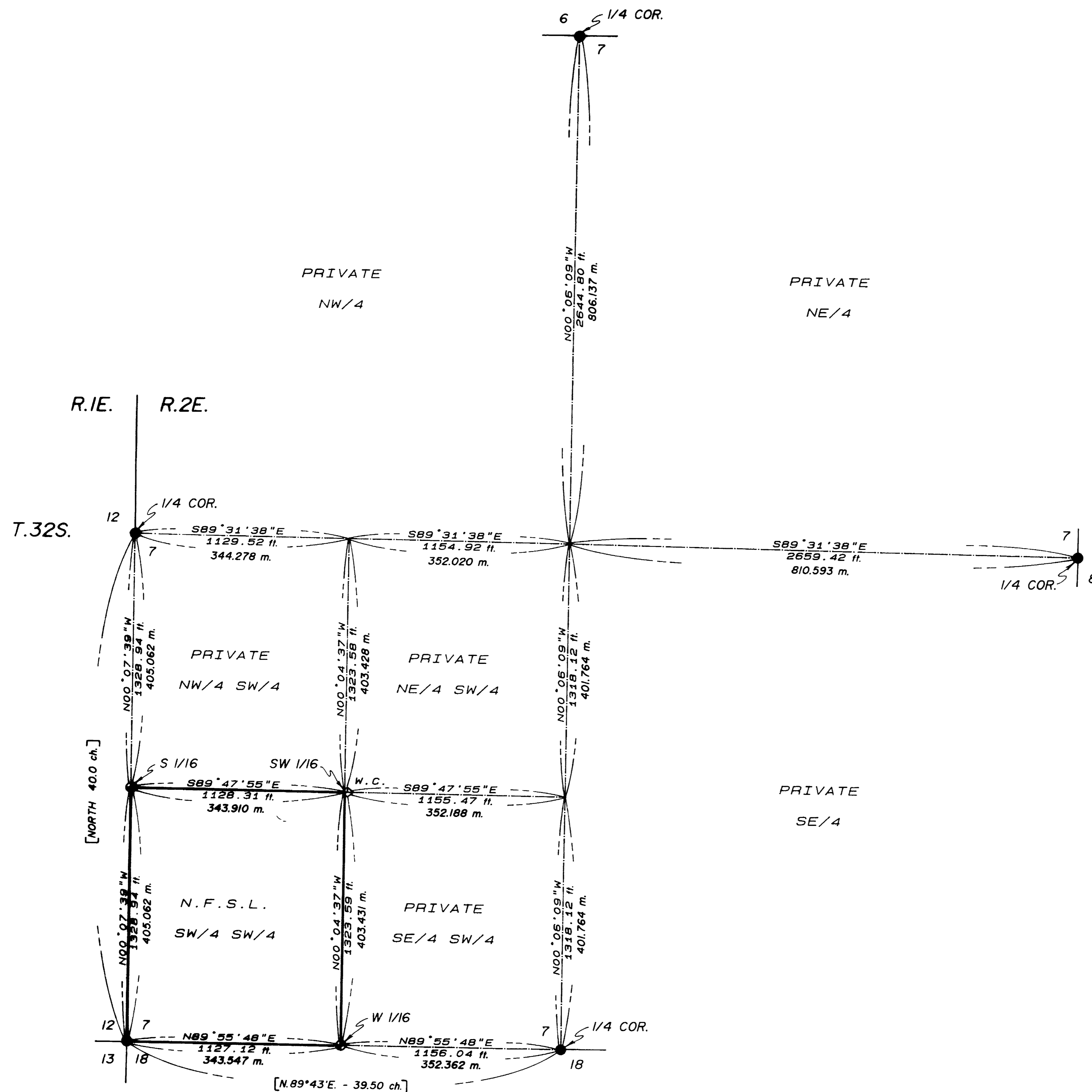


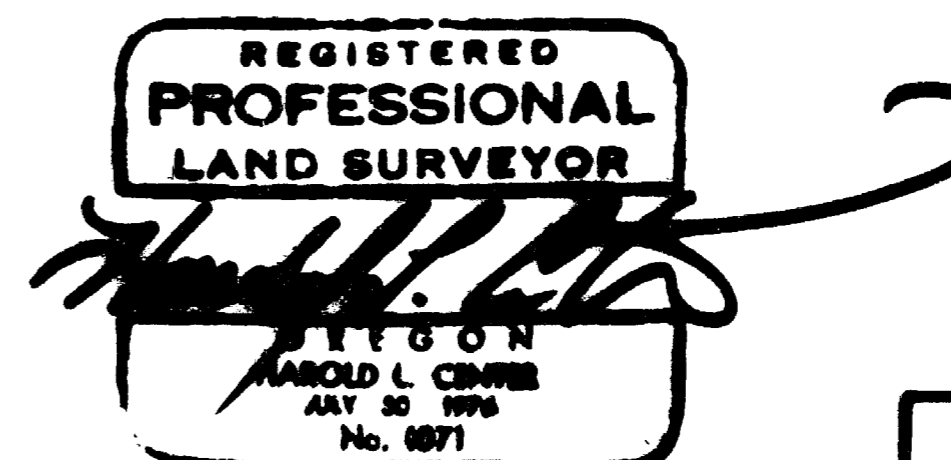
# MAP OF SURVEY FOR ROGUE RIVER NATIONAL FOREST

P.O. BOX 520  
MEDFORD, OREGON  
DECEMBER 16, 1988



### CERTIFICATE OF SURVEY

I, HAROLD L. CENTER, REGISTRATION NO. 1071, REGISTERED PROFESSIONAL LAND SURVEYOR, STATE OF OREGON, HEREBY CERTIFY THAT THIS PLAT CORRECTLY REPRESENTS A SURVEY MADE BY ME OR UNDER MY DIRECT SUPERVISION IN CONFORMANCE WITH THE LAWS OF THE STATE OF OREGON AT THE REQUEST OF THE UNITED STATES FOREST SERVICE.



PROJECT NO. 88-26a

U.S. DEPARTMENT OF AGRICULTURE  
FOREST SERVICE  
REGION 6 - ROGUE RIVER NATIONAL FOREST

DEPENDENT RESURVEY  
AND  
SECTION SUBDIVISION  
SECTION 7, T.32S., R.2E., W.M.  
JACKSON COUNTY, OREGON

REVIEWED BY: *Harold L. Center* DATE: 1/2/89  
REVIEWED BY: *David L. King* DATE: 11/1/89

### LEGEND

- FOUND COUNTY SURVEYOR OR BUREAU OF LAND MGMT. MONUMENT
- ⊙ SET 2 1/2" DIA. IRON POST WITH 2 1/2" DIA. BRASS CAP
- N.F.S.L. NATIONAL FOREST SYSTEM LANDS (Rogue River Nat'l Forest)
- CALCULATED LINE FROM TRAVERSE SURVEY
- PROPERTY BOUNDARY MARKED AND POSTED THIS SURVEY
- ◇ SET 2 1/2" DIAMETER IRON POST IN MOUND OF STONE WITH CONCRETE FOR WITNESS CORNER: S. 89° 47' 55" E., 13.58 Feet
- [ ] PUBLIC LAND SURVEY SYSTEM (GOV'T. RECORD)

### HISTORY OF SURVEYS

SECTION 7, TOWNSHIP 32 SOUTH, RANGE 2 EAST, W.M. WAS ORIGINALLY SURVEYED BY TURNER & HOWARD UNDER CONTRACT NO. 142 DATED SEPTEMBER 9, 1870. THE FOLLOWING CORNERS WERE REMONUMENTED FROM ORIGINAL EVIDENCE:

THE SOUTHWEST SECTION CORNER FOR SECTION 7 WAS REMONUMENTED BY THE JACKSON COUNTY SURVEYOR IN 1960.

THE ONE-QUARTER CORNER FOR SECTIONS 7 AND 18 WAS REMONUMENTED BY THE JACKSON COUNTY SURVEYOR IN 1974.

THE ONE-QUARTER CORNER FOR SECTIONS 7 AND 8 WAS REMONUMENTED BY THE JACKSON COUNTY SURVEYOR IN 1981.

THE ONE-QUARTER CORNER FOR SECTION 7, RANGE 2 EAST, AND SECTION 12, RANGE 1 EAST, WAS REMONUMENTED BY THE BUREAU OF LAND MANAGEMENT IN 1968.

THE ONE-QUARTER CORNER FOR SECTIONS 6 AND 7 WAS REMONUMENTED FROM EVIDENCE BY THE JACKSON COUNTY SURVEYOR IN 1981.

NO OTHER SURVEYS ARE OF RECORD.

RECEIVED  
Date 2/7/89 By SK  
This survey consists of:  
1. sheet(s) Map  
6. sheet(s) Narrative  
JACKSON COUNTY SURVEYOR

A basalt stone, 5' X 5' X 2', bears N.31°15'E., 17.49 feet distance, marked B<sub>X</sub>O.

The southwest one-sixteenth corner for section 7, Township 32 South, Range 2 East, Willamette Meridian, Jackson County, Oregon.

At the corner point, I could not set a monument due to the true point falling in Brush Creek. For the Witness Corner, I set a 2 1/2 inch diameter brass cap monument on a 2 1/2 inch diameter iron post in a large mound of stone stabilized with cement. Said Witness Corner bears S.89°47'55"E., 13.58 feet from the true corner point, and is marked:

T 32 S R 2 E  
W.C.  
SW 1/16 — S 7  
1988  
LS 1071

And mark the following accessories for the witness corner:

An 11-inch diameter fir bears S.20°16'W., 56.95 feet distance, scribed WCSW1/16S7LS1071 BT.

A 7-inch diameter fir bears N.44°06'W., 45.21 feet distance, scribed WCSW1/16S7LS1071 BT.

DECEMBER 16, 1988

HAROLD L. CENTER  
REGISTERED PROFESSIONAL LAND SURVEYOR  
OREGON CERTIFICATE NO. 1071

REGISTERED  
PROFESSIONAL  
LAND SURVEYOR

*Harold L. Center*  
OREGON  
HAROLD L. CENTER  
MAY 28, 1976  
No. 1071

\*\* RECEIVED \*\*  
Date 2/7/89 By rc  
This survey Consists of:  
1 sheet(s) Map  
0 page(s) Narrative  
JACKSON COUNTY  
SURVEYOR

A 13-inch diameter fir bears S.64°49'W., 42.34 feet distance, with a healed blaze.

A 12-inch diameter fir bears N.24°21'E., 41.72 feet distance, with a healed blaze.

A 24-inch diameter fir bears S.26°59'E., 7.90 feet distance, with a healed blaze.

CORNERS ESTABLISHED THIS SURVEY

The west one-sixteenth corner for sections 7 and 18, Township 32 South, Range 2 East, Willamette Meridian, Jackson County, Oregon.

At the corner point, I set a 2 1/2 inch diameter brass cap monument on a 2 1/2 inch diameter iron post 28 inches in the ground, marked:

T 32 S R 2 E  
S 7  
W 1/16 ———  
S 18  
1988  
LS 1071

And mark the following accessories:

A 7-inch diameter fir bears S.19°12'E., 51.71 feet distance, scribed X BT.

A 16-inch diameter fir bears N.27°39'E., 6.08 feet distance, scribed W1/16S7LS1071 BT.

The south one-sixteenth corner for section 12, Township 32 South, Range 1 East, and section 7, Township 32 South, Range 2 East, Willamette Meridian, Jackson County, Oregon.

At the corner point, I set a 2 1/2 inch diameter brass cap monument on a 2 1/2 inch diameter iron post 30 inches in the ground, marked:

T 32 S R 2 E  
S 1/16  
R1E |  
S12 | S7  
1988  
LS 1071

And mark the following accessories:

A 21-inch diameter fir bears S.52°03'W., 5.04 feet distance, scribed S1/16S12LS1071 BT.

A 12-inch diameter yew bears N.38°25'E., 43.70 feet distance, with scribing CS BT visible.

The one-quarter corner for sections 6 and 7, Township 32 South, Range 2 East, Willamette Meridian, Jackson County, Oregon.

At the corner point, I found a 2 inch diameter brass cap monument on a 1 inch diameter iron post protruding 8 inches above ground, marked:

JACKSON COUNTY  
T 32 S R 2 E

6  
1/4S ———  
7

1981

And the following accessories:

A 28-inch diameter fir bears N.14°59'W., 20.30 feet distance, with an opened blaze.

A 6-inch diameter cedar bears N.07°48'W., 32.00 feet distance, with scribing CS BT visible.

A 7-inch diameter fir bears S.54°15'E., 14.20 feet distance, with a healed blaze.

A 27-inch diameter fir snag bears S.17°00'E., 23.30 feet distance, with a healed blaze.

A sawed fir stump bears S.44°28'W., 2.50 feet distance, with scribing BT visible.

The one-quarter corner for section 12, Township 32 South, Range 1 East, and section 7, Township 32 South, Range 2 East, Willamette Meridian, Jackson County, Oregon.

At the corner point, I found a standard Bureau of Land Management monument protruding 6 inches above ground, marked:

U.S. DEPT. OF THE INTERIOR  
UNLAWFUL TO DISTURB

1/4  
R1E | R2E  
S12 | S7

1968  
CADASTRAL SURVEYS  
BUR. OF LAND MANAGEMENT

And the following accessories:

A 14-inch diameter fir bears N.36°53'E., 27.15 feet distance, scribed T32SR2ES7LS1071 BT.

NOTE: An 8-inch diameter well casing protruding 3 inches above ground, bears S.89°20'W., 48.00 feet.

The one-quarter corner for sections 7 and 18, Township 32 South, Range 2 East, Willamette Meridian, Jackson County, Oregon.

At the corner point, I found a 2-inch diameter lead filled pipe expander on a 1-inch diameter iron post, protruding 4 inches above ground, marked:

CS 1974  
T 32 S R 2 E

7  
1/4 ———  
18  
COR  
1950

And the following accessories:

A 14-inch diameter fir bears N.12°47'W., 54.09 feet distance, with a healed blaze.

A 14-inch diameter fir bears S.33°38'W., 46.30 feet distance, with a healed blaze.

A 15-inch diameter fir bears S.71°31'W., 11.45 feet distance, with scribing 1/4S visible.

The one-quarter corner for sections 7 and 8, Township 32 South, Range 2 East, Willamette Meridian, Jackson County, Oregon.

At the corner point, I found a 2 inch diameter brass cap monument on a 1 inch diameter iron post protruding 24 inches above ground, marked:

JACKSON COUNTY  
T 32 S R 2 E

1/4S 7 | 8 1  
9  
8  
1

And the following accessories:

A 16-inch diameter fir bears N.79°46'W., 72.60 feet distance, with a healed blaze.

A 23-inch diameter sawed fir stump bears N.70°43'W., 34.10 feet distance, with fragmentary scribing BT visible.

Corners were established at the corner points for the south one-sixteenth corner and the west one-sixteenth corner. At the southwest one-sixteenth corner, said point falling in Brush Creek, I set a Witness Corner as described later in this narrative.

The property boundary was posted with 6-foot aluminum posts with (54-2) property boundary signs attached. Trees along line were blazed and painted with red timber marking paint.

**EQUIPMENT:** This survey was performed utilizing a Wild T-2 theodolite and a Sokkisha Red 2L Electronic Distance Meter.

**BASIS OF BEARING :** Solar observation at the southwest section corner for section 7.

CORNERS ACCEPTED FOR CONTROL

The section corner for sections 7 and 18, Township 32 South, Range 2 East, and sections 12 and 13, Township 32 South, Range 1 East, Willamette Meridian, Jackson County, Oregon.

At the corner point, I found 2-inch diameter lead filled pipe expander on a 1-inch diameter iron post, protruding 6 inches above ground, marked:

T 32 S		
		1
		9
12	7	4
13	18	9

R 1 E CS 1960 R 2 E

And the following accessories:

A 12-inch diameter yew bears S.52°29'E., 17.10 feet distance, with scribing CS BT visible.

A 10-inch diameter yew bears N.31°14'W., 101.60 feet distance, with scribing CS BT visible.

A 6-inch diameter yew bears N.00°31'W., 48.90 feet distance, with scribing CS BT visible. This tree has a dead top.

A 14-inch diameter maple bears S.51°27'W., 64.00 feet distance, with a healed blaze.

I marked the following new accessories:

A 9-inch diameter fir bears S.25°12'W., 30.40 feet distance, scribed T32SR1ES13LS1071 BT.

SURVEY NARRATIVE TO COMPLY WITH  
PARAGRAPH 209.250 OREGON REVISED STATUTES

**SURVEY FOR:** ROGUE RIVER NATIONAL FOREST  
P.O. BOX 520  
MEDFORD, OREGON 97501

**LOCATION:** SECTION 7, TOWNSHIP 32 SOUTH, RANGE 2 EAST, WILLAMETTE  
MERIDIAN, JACKSON COUNTY, OREGON.

**PURPOSE:** To establish property corners and to mark and post the  
boundaries between Private and National Forest System Lands  
within section 7.

**HISTORY OF**

**SURVEYS:** Section 7, Township 32 South, Range 2 East, W.M. was  
originally surveyed by Turner & Howard under contract No. 142  
dated September 9, 1870. The following corners were  
remonumented from original evidence:  
The section corner for sections 7 and 18, Range 2 East, and  
sections 12 and 13, Range 1 East, was monumented by the Jackson  
County Surveyor in 1960.  
The one-quarter corner for sections 7 and 18 was remonumented  
by the Jackson County Surveyor in 1974.  
The one-quarter corner for sections 7 and 8 was remonumented  
by the Jackson County Surveyor in 1981.  
The one-quarter corner for section 7, Range 2 East, and  
section 12, Range 1 East, was remonumented by the Bureau of  
Land Management in 1968.

No other surveys are of record.

**PROCEDURE:** I began this survey by performing an investigation of the  
controlling corner points required to subdivide the southwest  
one-quarter of section 7. The four one-quarter corners and  
the southwest section corner were found and verified as being  
remonumented original corner points.  
I began my control traverse at the southwest section corner  
for section 7 by taking a solar observation. I then  
traversed around section 7, tying all found corners to the  
closed traverse.  
I then calculated the subdivision of the southwest one-quarter  
of section 7, paying particular attention to the original  
plat, which showed lotting against the Range line.  
I began the interior traverse at the proportioned position for  
the west one-sixteenth corner for sections 7 and 18, where I  
found a wooden post, not of record approximately 14 feet to  
the east, and an old blazed line heading north from said  
wooden post. I then traversed northerly from the proportioned  
position and established a temporary position for the  
southwest one-sixteenth corner for section 7. I continued my  
traverse westerly and established a temporary position for the  
south one-sixteenth corner for section 7, Range 2 East, and  
section 12, Range 1 East, tying my interior traverse to the  
exterior control traverse.