

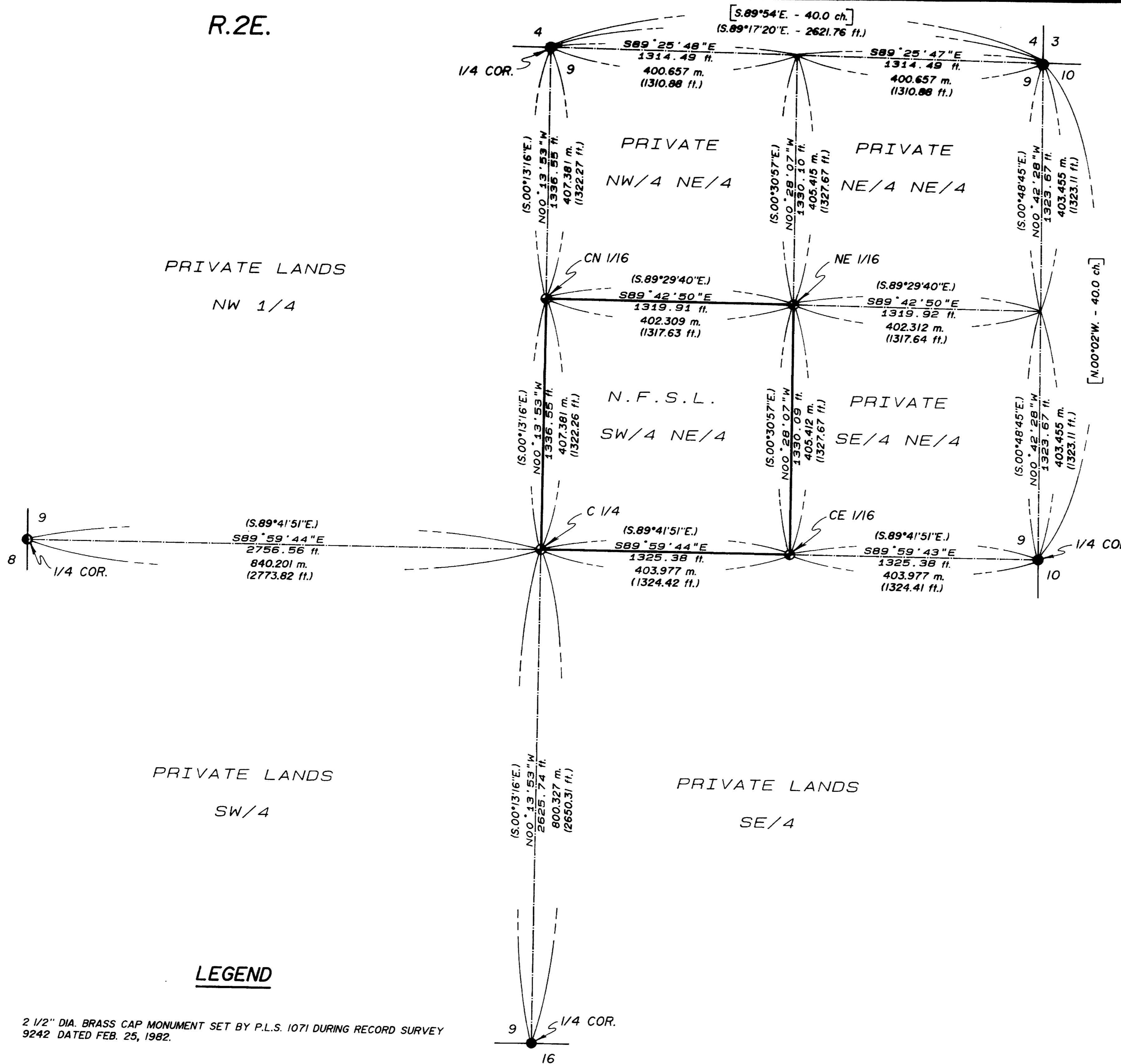
R.2E.

SURVEY NO. _____

MAP OF SURVEY FOR ROGUE RIVER NATIONAL FOREST

P.O. BOX 520
MEDFORD, OREGON
DECEMBER 28, 1988

T.32S.



LEGEND

- 2 1/2" DIA. BRASS CAP MONUMENT SET BY P.L.S. 1071 DURING RECORD SURVEY 9242 DATED FEB. 25, 1982.
- COUNTY SURVEYOR OR PRIVATE SURVEYOR MONUMENT FOUND
- SET 2 1/2" DIA. IRON POST WITH 2 1/2" DIA. BRASS CAP PLACE ELK LUMBER COMPANY MONUMENT INSIDE OUR IRON POST
- CALCULATED LINE FROM TRAVERSE SURVEY
- PROPERTY BOUNDARY MARKED AND POSTED THIS SURVEY
- N.F.S.L. NATIONAL FOREST SYSTEM LANDS (Rogue River Nat'l Forest)
- [] PUBLIC LAND SURVEY SYSTEM (GOV'T. RECORD)
- () LELAND LOVEJOY, P.L.S. 262, JACKSON COUNTY RECORD SURVEY NO. 843, DATED JULY 18, 1935.

HISTORY OF SURVEYS

THE ORIGINAL EXTERIOR CORNERS FOR SECTION 9 WERE ESTABLISHED BY PETER APPLIGATE UNDER CONTRACT NO. 651 DATED APRIL 25, 1896.

SECTION 9 WAS ORIGINALLY SUBDIVIDED BY LELAND P. LOVEJOY, P.L.S. 262, DURING JACKSON COUNTY RECORD SURVEY NO. 843, DATED JULY 18, 1935. THESE INTERIOR LOVEJOY CORNER POINTS WERE PERPETUATED BY ELK LUMBER COMPANY IN 1966.

THE SOUTH ONE-QUARTER CORNER FOR SECTION 9 WAS REMONUMENTED FROM EVIDENCE BY BRICE L. BRANDT, P.L.S. 787, DURING JACKSON COUNTY RECORD SURVEY NO. 4004, DATED APRIL 28, 1969.

THE NORTH ONE-QUARTER CORNER FOR SECTION 9 WAS REMONUMENTED FROM EVIDENCE BY THE JACKSON COUNTY SURVEYOR IN 1974.

THE NORTHEAST SECTION CORNER FOR SECTION 9 WAS REMONUMENTED FROM EVIDENCE BY EVERETT L. SWAIN, P.L.S. 759, DURING JACKSON COUNTY RECORD SURVEY NO. 5797-0 DATED JUNE 20, 1974.

THE EAST ONE-QUARTER CORNER FOR SECTION 9 WAS REMONUMENTED FROM EVIDENCE BY THE JACKSON COUNTY SURVEYOR IN 1987.

THE WEST ONE-QUARTER CORNER FOR SECTION 9 WAS REESTABLISHED BY PROPORTIONATE MEASUREMENT BY LELAND P. LOVEJOY, P.L.S. 262, DURING RECORD SURVEY NO. 843. THIS CORNER WAS FURTHER PERPETUATED BY ROBERT M. VINCENT, P.L.S. 583, DURING JACKSON COUNTY RECORD SURVEY NO. 2739 DATED DECEMBER 17, 1964. THIS PROPORTIONED CORNER WAS NOT ACCEPTED BY ME, HAROLD L. CENTER, WHILE I WAS PERFORMING JACKSON COUNTY RECORD SURVEY NO. 9242, DATED FEBRUARY 25, 1982. DURING THIS SURVEY I RECOVERED AN ORIGINAL LINE TREE OF RECORD AND REESTABLISHED THE ONE-QUARTER CORNER FOR SECTIONS 8 AND 9.

NO OTHER SURVEYS ARE OF RECORD.

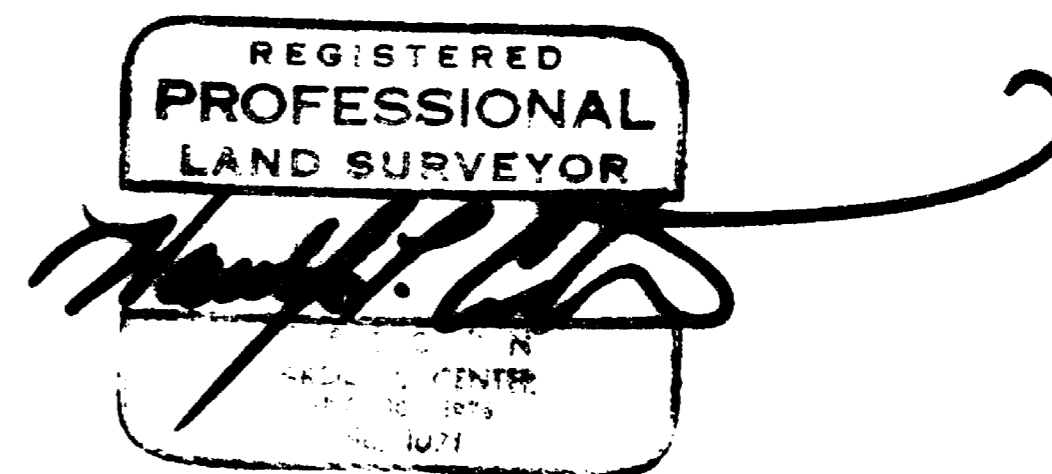
BASIS OF BEARING: SOLAR OBSERVATION

0 500 1000 1500
SCALE IN FEET

0 100 200 300 400
SCALE IN METERS
1 METER = 3.280833 FEET

CERTIFICATE OF SURVEY

I, HAROLD L. CENTER, REGISTRATION NO. 1071, REGISTERED PROFESSIONAL LAND SURVEYOR, STATE OF OREGON, HEREBY CERTIFY THAT THIS PLAT CORRECTLY REPRESENTS A SURVEY MADE BY ME OR UNDER MY DIRECT SUPERVISION IN CONFORMANCE WITH THE LAWS OF THE STATE OF OREGON AT THE REQUEST OF THE UNITED STATES FOREST SERVICE.



2/7/89 JK
1
7

PROJECT NO. 88-26b

U.S. DEPARTMENT OF AGRICULTURE
FOREST SERVICE
REGION 6 - ROGUE RIVER NATIONAL FOREST

DEPENDENT RESURVEY
AND
SECTION SUBDIVISION
SECTION 9, T.32S., R.2E., W.M.
JACKSON COUNTY, OREGON

REVIEWED BY: *Frank J. Bell* DATE: *1/1/89*
REVIEWED BY: *Harold Center* DATE: *1/31/89*

SURVEY NO. **11403**
PAGE 7 OF 7

A 17-inch diameter cedar bears N.66°27'W., 29.82 feet distance, scribed CEL/16S9LS1071 BT.

A 35-inch diameter fir bears N.24°08'E., 9.12 feet distance, scribed CEL/16S9LS1071 BT.

NOTE: The old Elk Lumber Company monument was found S.82°49'11"E., 19.93 feet distance from the true corner point.

DECEMBER 28, 1988

HAROLD L. CENTER
REGISTERED PROFESSIONAL LAND SURVEYOR
OREGON CERTIFICATE NO. 1091

REGISTERED
PROFESSIONAL
LAND SURVEYOR

Harold L. Center
OREGON
HAROLD L. CENTER
ART. 28, 1974
No. 1071

** RECEIVED **
Date 2/7/89 By JK
This survey consists of:
01 sheet(s) Map
7 page(s) Narrative
JACKSON COUNTY
SURVEYOR

A 29-inch diameter fir bears $S.74^{\circ}50'E.$, 45.88 feet distance, scribed CN1/16S9LS1071 BT.

A 10-inch diameter fir bears $S.51^{\circ}20'W.$, 11.90 feet distance, scribed CN1/16S9LS1071 BT.

NOTE: The old Elk Lumber Company monument was found $N.59^{\circ}13'10"E.$, 4.39 feet distance from the true corner point.

The northeast one-sixteenth corner for section 9, Township 32 South, Range 2 East, Willamette Meridian, Jackson County, Oregon.

At the corner point, I set a 2 1/2 inch diameter brass cap monument on a 2 1/2 inch diameter iron post, with the old Elk Lumber Company monument inserted inside my monument, 27 inches in the ground, with cap marked:

T 32 S R 2 E
NE 1/16 ——— S 9
1988
LS 1071

And marked the following accessories:

A 13-inch diameter fir bears $N.51^{\circ}45'W.$, 6.75 feet distance, scribed NE1/16S9LS1071 BT.

A 22-inch diameter fir bears $S.06^{\circ}10'W.$, 13.40 feet distance, scribed NE1/16S9LS1071 BT.

NOTE: The old Elk Lumber Company monument was found $S.67^{\circ}24'08"W.$, 9.86 feet distance from the true corner point.

The center-east one-sixteenth corner for section 9, Township 32 South, Range 2 East, Willamette Meridian, Jackson County, Oregon.

At the corner point, I set a 2 1/2 inch diameter brass cap monument on a 2 1/2 inch diameter iron post, with the old Elk Lumber Company monument inserted inside my monument, 26 inches in the ground, with cap marked:

T 32 S R 2 E
E 1/16
C ——— C
S 9
1988
LS 1071

And marked the following accessories:

An 11-inch diameter fir bears N.58°12'E., 33.10 feet distance, with a healed blaze.

A 12-inch diameter fir bears N.56°50'W., 27.20 feet distance, with a healed blaze.

CORNERS ESTABLISHED THIS SURVEY

The center one-quarter corner for section 9, Township 32 South, Range 2 East, Willamette Meridian, Jackson County, Oregon.

At the corner point, I set a 2 1/2 inch diameter brass cap monument on a 2 1/2 inch diameter iron post with the old Elk Lumber Company monument inserted inside my monument, 25 inches in the ground, with cap marked:

T 32 S R 2 E

C 1/4 — S 9

1988

LS 1071

And marked the following accessories:

A 17-inch diameter fir bears S.50°40'E., 23.17 feet distance, scribed C1/4S9LS1071 BT.

A 35-inch diameter fir bears N.27°58'E., 13.47 feet distance, scribed C1/4S9LS1071 BT.

NOTE: The old Elk Lumber Company monument was found N.26°29'10"E., 7.68 feet distance from the true corner point.

The center-north one-sixteenth corner for section 9, Township 32 South, Range 2 East, Willamette Meridian, Jackson County, Oregon.

At the corner point, I set a 2 1/2 inch diameter brass cap monument on a 2 1/2 inch diameter iron post, with the old Elk Lumber Company monument inserted inside my monument, 26 inches in the ground, with cap marked:

T 32 S R 2 E

C
N 1/16 — S 9

C
1988

LS 1071

And marked the following accessories:

A 16-inch diameter fir bears S.51°53'E., 19.98 feet distance, with scribing CS BT visible.

An 11-inch diameter fir bears S.20°30'W., 14.29 feet distance, with scribing CS BT visible.

A 24-inch diameter fir bears S.75°07'W., 19.70 feet distance, with an opened blaze.

The one-quarter corner for sections 9 and 16, Township 32 South, Range 2 East, Willamette Meridian, Jackson County, Oregon.

At the corner point, I found a 2 inch diameter lead filled pipe expander on a 1 inch diameter iron post, protruding 1 inch above ground, marked:

S9
1/4
S16

1969
RS 787

And the following accessories:

A 19-inch diameter fir stump bears S.61°44'E., 30.87 feet distance, with no marks visible.

A 7-inch diameter fir bears N.29°06'W., 10.46 feet distance, with scribing CS BT visible.

A 30-inch diameter fir stump bears N.44°54'W., 82.31 feet distance, with scribing B visible in an opened blaze.

A 12-inch diameter fir bears S.22°05'E., 38.64 feet distance, with scribing CS BT visible.

The one-quarter corner for sections 8 and 9, Township 32 South, Range 2 East, Willamette Meridian, Jackson County, Oregon.

At the corner point, I found a 2 1/2 inch diameter brass cap monument on a 2 1/2 inch diameter iron post, marked:

T 32 S R 2 E
1/4
S8 | S9
1982
LS 1071

And the following accessories:

A 42-inch diameter fir bears N.17°59'E., 12.71 feet distance, with bark scribe T32SR2ES3BT visible.

A 12-inch diameter fir bears N.45°00'W., 31.17 feet distance, with fragmentary scribing visible.

The one-quarter corner for sections 4 and 9, Township 32 South, Range 2 East, Willamette Meridian, Jackson County, Oregon.

At the corner point, I found a 2 1/2 inch diameter brass cap monument on a 1 inch diameter iron post protruding 6 inches above ground, marked:

T 32 S R 2 E
 4 1
 1/4S ——— 9
 9 7
 4
 JACKSON COUNTY

And the following accessories:

A 17-inch diameter hemlock bears S.77°56'W., 17.10 feet distance, with fragmentary scribing visible.

A 10-inch diameter hemlock bears S.02°29'W., 8.45 feet distance, with scribign BT visible. This tree is dead.

A 13-inch diameter hemlock bears N.69°27'E., 2.35 feet distance, with scribign CS BT visible.

The one-quarter corner for sections 9 and 10, Township 32 South, Range 2 East, Willamette Meridian, Jackson County, Oregon.

At the corner point, I found a 2 1/2 inch diameter brass cap monument on a 1 inch diameter iron post protruding 3 inches above ground, marked:

T 32 S R 2 E
 1/4S
 9 | 10
 C.S.
 1987

And the following accessories:

An 8-inch diameter maple stump bears S.82°10'E., 17.40 feet distance, with fragmentary scribing visible in down tree along side stump.

Interior corners set by Surveyor Lovejoy and perpetuated by Surveyor Brandt were found at the following locations: center one-quarter, center-north one-sixteenth, center-east one-sixteenth, and northeast one-sixteenth approximate corner points. These monuments were not acceptable, due in part to the west one-quarter corner being reestablished after the Elk Lumber Company subdivision survey. I reestablished these interior corners at the true corner points and placed the Elk Lumber Company monuments inside my monuments, which are 2 1/2 inch diameter by 30 inch long iron posts with 2 1/2 inch diameter brass caps attached. The bearings and distances to the old Elk Lumber Company corner points are recorded later in this narrative.

The property boundary was posted with 6-foot aluminum posts with (54-2) property boundary signs attached. Trees along line were blazed and painted with red timber marking paint.

EQUIPMENT: This survey was performed utilizing a Nikon NTD-4 total station theodolite & electronic distance meter.

BASIS OF BEARING : Solar observation at the north one-quarter corner for section 9.

CORNERS ACCEPTED FOR CONTROL

The section corner for sections 3,4,9, and 10, Township 32 South, Range 2 East, Willamette Meridian, Jackson County, Oregon.

At the corner point, I found 2 1/2 inch diameter brass cap monument on a 1-inch diameter iron post, protruding 6 inches above ground, marked:

SWAIN SURVEYING
T 32 S R 2 E

S4	S3
S9	S10

PLS 759

SURVEY MONUMENT-1974

And the following accessories:

An 11-inch diameter fir bears S.67°31'W., 41.91 feet distance, with scribing T32SR2E visible.

An 11-inch diameter fir bears S.42°30'W., 29.42 feet distance, with fragmentary scribing visible.

An 18-inch diameter fir bears S.03°30'E., 50.15 feet distance, with a healed blaze.

An 11-inch diameter fir bears S.56°41'E., 45.33 feet distance, with a healed blaze.

SURVEY NARRATIVE TO COMPLY WITH
PARAGRAPH 209.250 OREGON REVISED STATUTES

SURVEY FOR: ROGUE RIVER NATIONAL FOREST
P.O. BOX 520
MEDFORD, OREGON 97501

LOCATION: SECTION 9, TOWNSHIP 32 SOUTH, RANGE 2 EAST, WILLAMETTE
MERIDIAN, JACKSON COUNTY, OREGON.

PURPOSE: To establish property corners and to mark and post the
boundaries between Private and National Forest System Lands
within section 9.

HISTORY OF

SURVEYS:

The original exterior corners of section 9 were established by Peter Applegate under contract No. 651 dated April 25, 1896. Section 9 was originally subdivided by Leland P. Lovejoy, PLS 262, during Jackson County Record Survey No. 843 dated July 18, 1955. The interior Lovejoy corner points for section 9 were perpetuated by Elk Lumber Company in 1966.

The south one-quarter corner for section 9 was remonumented from evidence by Brice L. Brandt, PLS 787, during Jackson County Record Survey No. 4004 dated April 28, 1969.

The north one-quarter corner for section 9 was remonumented from evidence by the Jackson County Surveyor in 1974.

The northeast section corner for section 9 was remonumented from evidence by Everett L. Swain, PLS 759, during Jackson County Record Survey No. 5797-0 dated June 20, 1974.

The east one-quarter corner for section 9 was remonumented from evidence by the Jackson County Surveyor in 1987.

The west one-quarter corner for section 9 was reestablished by proportionate measurement by Leland P. Lovejoy during record survey No. 843. This corner was further perpetuated by Robert M. Vincent, PLS 583, during Jackson County Record Survey No. 2739 dated December 17, 1964. This proportioned corner was not accepted by me, Harold L. Center, while I was performing Jackson County Record Survey No. 9242 dated February 25, 1982. During this survey, I recovered an original line tree of record and reestablished the one-quarter corner for sections 8 and 9.

No other surveys are of record.

PROCEDURE:

I began this survey by performing an investigation of the controlling corner points required to subdivide the northeast one-quarter of section 9. The four one-quarter corners and the northeast section corner were found and verified as being the true corner points.

I began my control traverse at the north one-quarter corner for section 9 by taking a solar observation. I then traversed around section 9, tying all found corners to the closed traverse.

I calculated the subdivision of section 9 and began the interior traverse of the northeast one-quarter of section 9, tying my interior traverse to the exterior control traverse.