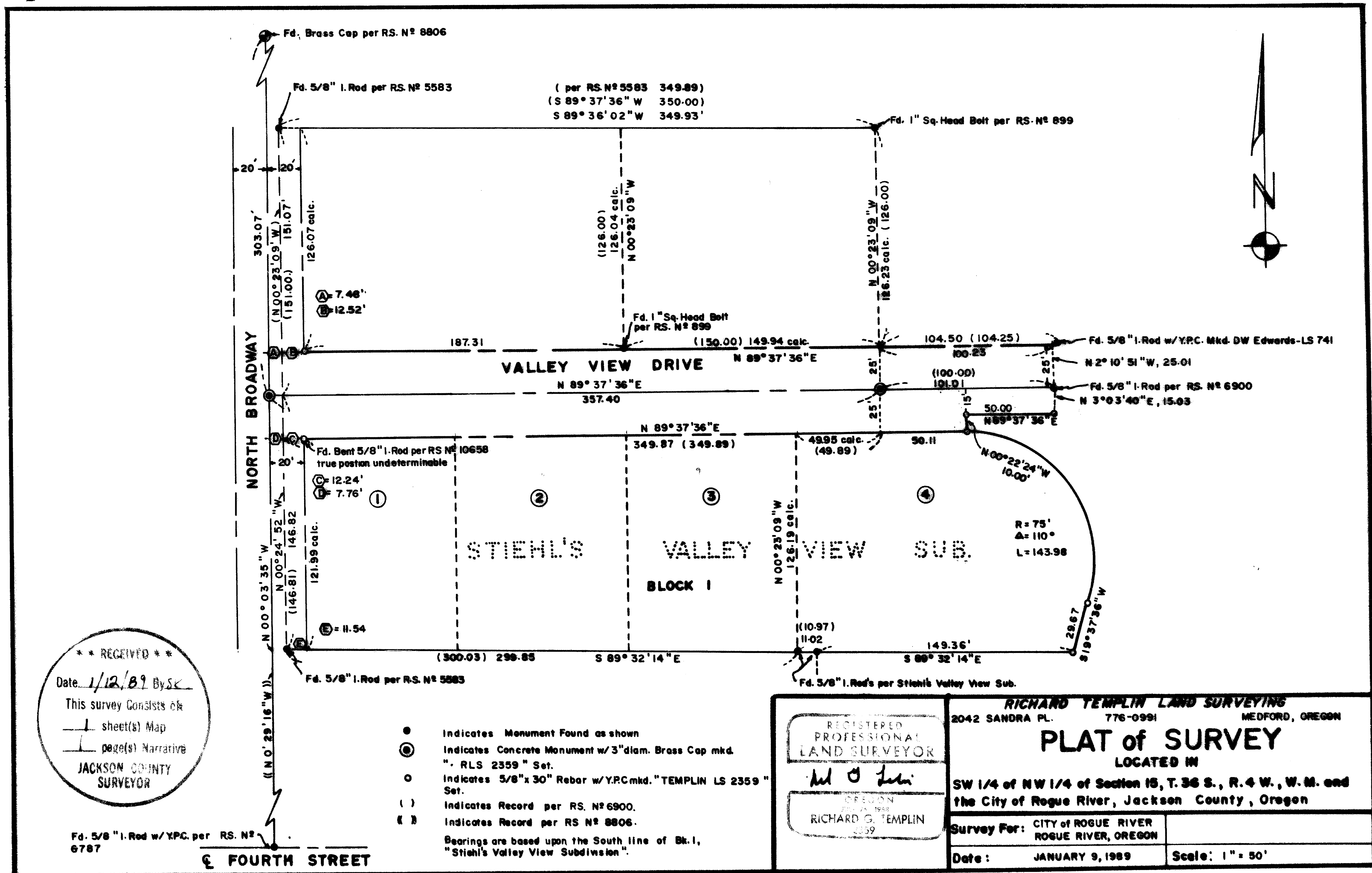


11464

11464



**RICHARD G. TEMPLIN**  
PROFESSIONAL LAND SURVEYOR

2042 Sandra Pl.  
Medford, Oregon 97504  
(503) 776-0991

SURVEY NO. 11464

**SURVEY FOR:** City of Rogue River  
Rogue River, Oregon

**LOCATION:** SW 1/4 of the NW 1/4 of Section 15, T.36S.,  
R.4W., W.M. in the City of Rogue River,  
Jackson County, Oregon.

**PURPOSE:** To survey and monument the Right of Way of  
Valley View Drive and the East line of Lot 1,  
Bk.1, Stiehl's Valley View Subdivision as  
requested by the City of Rogue River.

**DATE:** January 9, 1989

**BASIS OF  
BEARING:** Bearings based upon the South line of Block 1,  
" Stiehl's Valley View Subdivision ".

**PROCEDURE:** Utilizing a Wild T-16 and Mac 1E EDM, tied in  
control monuments shown on accompanying plat.  
Due to the terraced off landscaping in "  
Stiehl's Valley View Subdivision " most of  
the original lot and block corners were  
destroyed. From monuments found, computed deed  
locations were calculated and set from closed  
control traverse.

