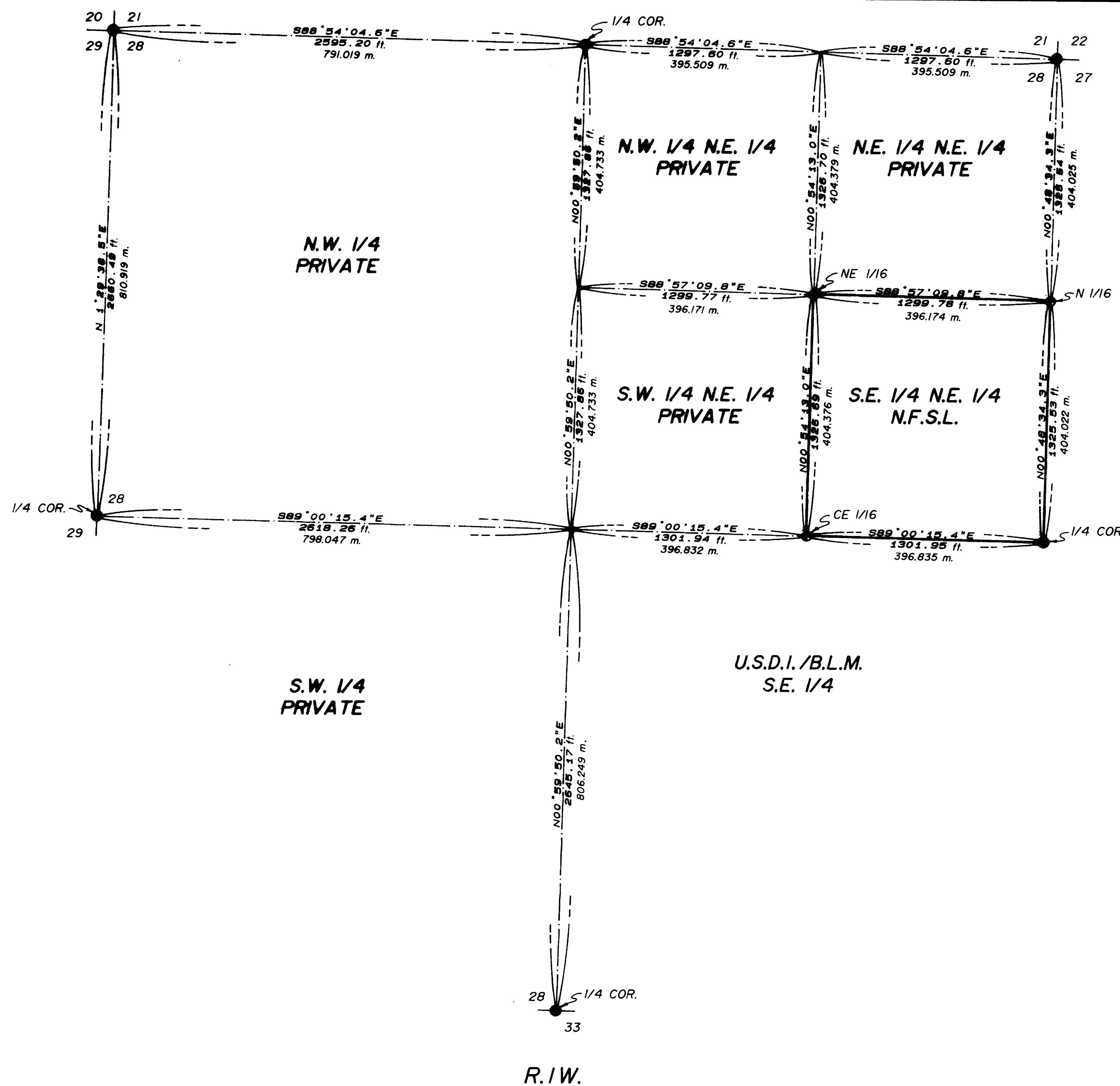
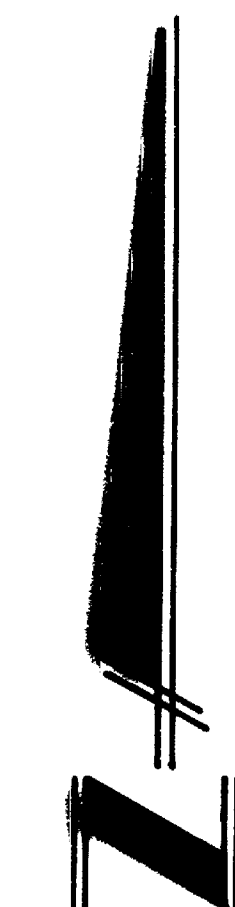


MAP OF SURVEY
FOR
ROGUE RIVER NATIONAL FOREST
P.O. BOX 520
MEDFORD, OREGON
SEPTEMBER 14, 1988

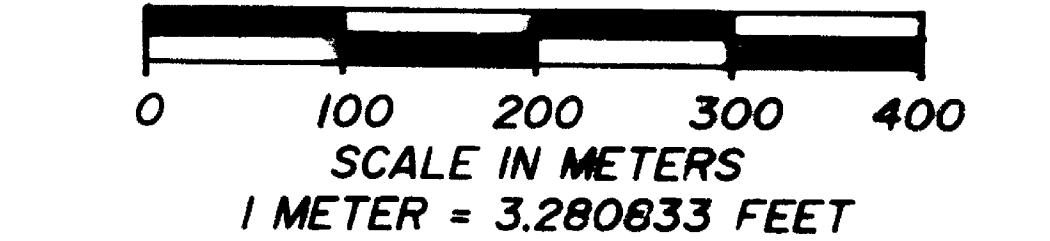
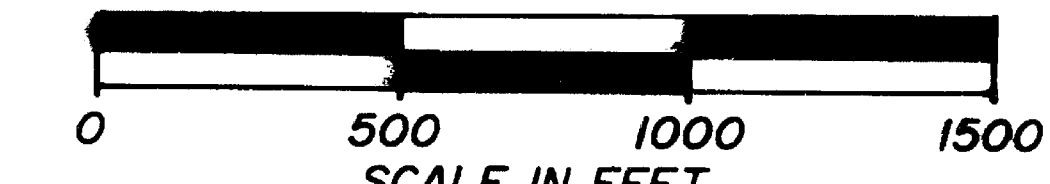


U.S.D.I./B.L.M.

T.33S.



BASIS OF BEARING: RECORD SURVEY NO. 9986 AT THE SOUTH 1/4 CORNER, SECTION 28



CERTIFICATE OF SURVEY

I, HAROLD L. CENTER, REGISTRATION NO. 1071, REGISTERED PROFESSIONAL LAND SURVEYOR, STATE OF OREGON, HEREBY CERTIFY THAT THIS PLAT CORRECTLY REPRESENTS A SURVEY MADE BY ME OR UNDER MY DIRECT SUPERVISION IN CONFORMANCE WITH THE LAWS OF THE STATE OF OREGON AT THE REQUEST OF THE UNITED STATES FOREST SERVICE.

REGISTERED
PROFESSIONAL
LAND SURVEYOR
Harold L. Center
OREGON
HAROLD L. CENTER
NOV. 20, 1974
No. 1071

** RECEIVED **
Date 10/19/88 By DL
This survey consists of:
1 sheet(s) Map
6 page(s) Narrative
JACKSON COUNTY
CLERK

HISTORY OF SURVEYS

PART OF THE SUBDIVISION ON TOWNSHIP 33 SOUTH, RANGE 1 WEST, W.M., TO INCLUDE SECTION 28, WAS SURVEYED BY NATHANIEL FORD UNDER CONTRACT NO. 58 DATED JULY 7, 1856.

THE WEST ONE-QUARTER CORNER WAS REMONUMENTED FROM EVIDENCE BY THE JACKSON COUNTY SURVEYOR IN 1960. THE NORTHWEST AND NORTHEAST SECTION CORNERS WERE REMONUMENTED FROM EVIDENCE BY THE BUREAU OF LAND MANAGEMENT DIVISION OF CADASTRAL SURVEYS IN 1973. THE SOUTH ONE-QUARTER CORNER WAS REMONUMENTED FROM EVIDENCE BY CHARLES HURST, R.S. 483, DURING RECORD SURVEY NO. 5478 DATED 1973. THE EAST ONE-QUARTER CORNER WAS REMONUMENTED FROM EVIDENCE BY THE JACKSON COUNTY SURVEYOR IN 1982.

NO OTHER SURVEYS OF THE NORTHEAST ONE-QUARTER OF SECTION 28 ARE OF RECORD.

LEGEND

- MONUMENT SET 2 1/2 INCH DIAMETER X 32 INCH LONG IRON POST WITH A 2 1/2 INCH DIAMETER BRASS CAP ATTACHED.
- MONUMENT FOUND
- LINES MARKED AND POSTED THIS SURVEY.
- - - TRVERSE SURVEY LINES
- N.F.S.L. NATIONAL FOREST SYSTEM LANDS
- U.S.D.I./B.L.M. UNITED STATES DEPARTMENT OF INTERIOR / BUREAU OF LAND MANAGEMENT.

PROJECT NO. 88-22

U.S. DEPARTMENT OF AGRICULTURE
FOREST SERVICE
REGION 6 - ROGUE RIVER NATIONAL FOREST

DEPENDENT RESURVEY
AND
SECTION SUBDIVISION
SEC. 28, T.33S., R.1W., W.M.
JACKSON COUNTY, OREGON

REVIEWED BY: John H. Bell DATE: 10/19/88
REVIEWED BY: David L. King DATE: 10/19/88

At the corner point, I set a 2 1/2-inch diameter iron post 28 inches in the ground, with a 2 1/2-inch diameter brass cap monument marked:

T33S R1W
E 1/16
S28
1988
LS 1071

and marked the following accessories:

A 29-inch diameter pine bears S.35°28'W., 136.40 feet distance, scribed CE 1/16S28 LS1071 BT.

An 8-inch diameter black oak bears S.74°57'W., 12.10 feet distance, scribed XBT.

The northeast one-sixteenth corner for Section 28, Township 33 South, Range 1 West, Willamette Meridian, Jackson County, Oregon.

At the corner point, I set a 2 1/2-inch diameter iron post 29 inches in the ground with a 2 1/2-inch diameter brass cap monument marked:

T33S R1W
NE1/16 — S28
1988
LS 1071

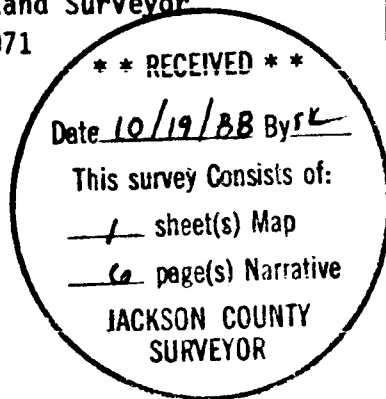
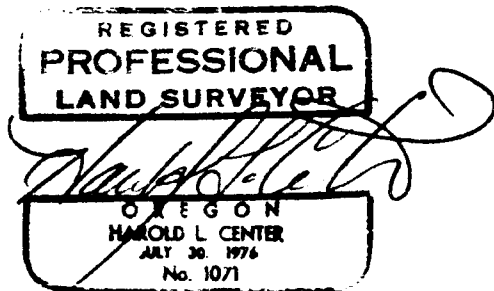
and mark the following accessories:

A 7-inch diameter black oak bears S.01°59'E., 24.27 feet distance, scribed XBT.

A 5-inch diameter black oak bears N.75°42'E., 9.80 feet distance, scribed NE 1/16S28LS1071BT.

September 14, 1988

HAROLD L. CENTER
Registered Professional Land Surveyor
Oregon Certificate No. 1071



CORNERS ESTABLISHED THIS SURVEY

The one-quarter corner for Sections 21 and 28, Township 33 South, Range 1 West, Willamette Meridian, Jackson County, Oregon.

At the corner point, I set a 2½-inch diameter iron post 31 inches in the ground with a 2½-inch diameter brass cap monument marked:

T33S R1W

S21
 ¼ —————
 S28

1988
 LS 1071

and mark the following accessories:

A 9-inch cedar bears S.12°26'W., 174.61 feet distance, scribed 1/4S28LS1071BT.

A 6-inch diameter black oak bears N.06°59'W., 23.10 feet distance, scribed 1/4S21LS1071BT.

The north one-sixteenth corner for Sections 27 and 28, Township 33 South, Range 1 West, Willamette Meridian, Jackson County, Oregon.

At the corner point, I set a 2½-inch diameter iron post 27 inches in the ground with a 2½-inch diameter brass cap monument marked:

T33S R1W

N 1/16

S28 | S27

1988
 LS 1071

and marked the following accessories:

A 10-inch diameter pine bears S.05°39'W., 66.81 feet distance, scribed N 1/16S28LS1071BT.

An 11-inch madrone bears S.18°06'E., 19.20 feet distance, scribed XBT.

The center-east one-sixteenth corner for Section 28, Township 33 South, Range 1 West, Willamette Meridian, Jackson County, Oregon.

A 15-inch diameter white oak bears N.00°21'E., 23.70 feet distance, with a partly healed blaze.

A 15-inch diameter white oak bears S.18°45'W., 31.20 feet distance, with a healed blaze.

The one-quarter corner for Sections 28 and 29, Township 33 South, Range 1 West, Willamette Meridian, Jackson County, Oregon.

At the corner point, I found a 2-inch diameter brass cap monument set flush with the ground, marked:

```

T33S  R1W
 1/4 | COR
 29  | 28
    C.S.
    1960
  
```

and the following accessories:

An 18-inch diameter white oak bears S.07°51'W., 31.42 feet distance, with a healed blaze.

A 9-inch diameter white oak bears S.41°08'E., 23.53 feet distance, with a healed blaze.

A sawed-off pine stump bears N.86°09'W., 5.00 feet distance, with no marks visible.

The one-quarter corner for Sections 27 and 28, Township 33 South, Range 1 West, Jackson County, Oregon.

At the corner point, I found a Jackson County Surveyor monument protruding 14 inches above ground, marked:

```

JACKSON COUNTY
T33S  R1W
 28  | 27
 1/4 |  S
    1982
  
```

and the following accessories:

A 7-inch black oak bears N.48°11'W., 31.50 feet distance, with scribing BT visible on a partly healed blaze.

A 5-inch diameter oak bears N.38°15'E., 18.70 feet distance, with scribing CS BT visible on a partly healed blaze.

A black oak cluster bears S.85°31'E., 27.50 feet distance, with no marks visible.

The section corner for Sections 21, 22, 27 and 28, Township 33 South, Range 1 West, Willamette Meridian, Jackson County, Oregon

At the corner point, I found a standard Bureau of Land Management monument protruding 4 inches above ground, marked:

U.S. DEPT OF INTERIOR
UNLAWFUL TO DISTURB

T33S	R1W
S21	S22
S28	S27

1973
CADASTRAL SURVEYS
BUR. OF LAND MANAGEMENT

and the following accessories:

A 10-inch diameter madrone bears N.47°25'W., 19.50 feet distance, with scribing 33SR1WS21BT visible on a partly healed blaze.

A 7-inch diameter black oak bears N.53°00'E., 35.78 feet distance, with a healed blaze.

A 19-inch black oak bears S.66°40'E., 53.89 feet distance, with no marks visible on a decayed face. This tree is bent over.

An 11-inch diameter madrone bears S.69°48'E., 13.50 feet distance, with scribing 33SR1W27BT visible on a partly healed blaze.

The one-quarter corner for Sections 28 and 33, Township 33 South, Range 1 West, Willamette Meridian, Jackson County, Oregon.

At the corner point, I found a 1-inch diameter iron post with a 2 1/2-inch diameter brass cap monument protruding 12 inches above ground, marked:

T33S	R1W
1/4	S28
	S33

RS483 1973

and the following accessories:

A 20-inch diameter white oak bears N.64°29'W., 17.00 feet distance, with no marks visible on a decayed face.

I re-established the north one-quarter corner point by proportional measurement.

With all controlling corners verified or re-established and tied to a closed loop traverse, I calculated the subdivision of the northeast one-quarter of Section 28. The interior lines were run, establishing the positions for the northeast and center-east one-sixteenth corners for Section 28, and for the north one-sixteenth corner for Sections 27 and 28.

The property boundary lines, as indicated on the attached map of survey, were posted with six-foot, aluminum posts with property boundary signs attached. Trees along line were blazed and painted with red timber-marking paint.

EQUIPMENT: Survey equipment utilized throughout this survey include: Wild T-2 theodolite #239439, and Sokkisha Red 2L Electronic Distance Meter.

CORNERS ACCEPTED FOR CONTROL

Section corner for Sections 20, 21, 28 and 29, Township 33 South, Range 1 West, Willamette Meridian, Jackson County, Oregon.

At the corner point, I found a standard Bureau of Land Management monument protruding 3 inches above ground, marked:

U.S. DEPT OF INTERIOR
UNLAW TO DISTURB

T33S	R1W
S20	S21
S29	S28

1973
BUR. OF LAND MANAGEMENT
CADASTRAL SURVEYS

and the following accessories:

An 8-inch diameter white oak bears S.01°52'E., 43.77 feet distance, with a healed blaze.

A 14-inch diameter white oak bears S.74°59'W., 3.40 feet distance, with a healed blaze.

A 6-inch diameter white oak bears N.35°10'W, 48.48 feet distance, with a healed blaze.

A 13-inch diameter white oak bears N.31°56'E., 24.86 feet distance, with a healed blaze.

A 10-inch diameter white oak bears N.47°38'E., 69.35 feet distance, with a healed blaze.

NOTE: Found a 2-inch (inside diameter) iron pipe on the northeast side of brass cap monument.

SURVEY NARRATIVE TO COMPLY WITH
PARAGRAPH 209.250 OREGON REVISED STATUTES

SURVEY FOR: Rogue River National Forest
P. O. Box 520
Medford, OR 97501

LOCATION : NE $\frac{1}{4}$ Section 28, Township 33 South, Range 1 West, Willamette
Meridian, Jackson County, Oregon

PURPOSE : To set monuments and mark and post the boundaries between National
Forest and Private lands within Section 28,

HISTORY : Part of the subdivision of Township 33 South, Range 1 West,
OF Willamette Meridian, to include Section 28, was surveyed by
SURVEYS Nathaniel Ford under Contract No. 58, dated July 7, 1856.

All controlling corners, with the exception of the north one-quarter corner, were remonumented from original evidence by various people, as outlined in the corner descriptions contained within this narrative.

No other surveys are of record.

BASIS OF BEARING: Basis of Bearing was generated from a solar bearing at the south one-quarter corner - reference Record Survey No. 9986.

PROCEDURE: Prior to commencement of this survey, I performed an investigation of all recovered corner points for Section 28. The northeast and northwest section corner points were remonumented from evidence by the Bureau of Land Management Division of Cadastral Surveys in 1973. The east one-quarter corner was remonumented by the Jackson County Surveyor in 1982. The west one-quarter corner was remonumented by the Jackson County Surveyor in 1960. The south one-quarter corner was remonumented by Charles Hurst, R.S. 483, during record survey No. 5478, dated 1973. Preliminary search for the original north one-quarter corner of Section 28 was unsuccessful.

With the above corner control verified, I began traverse at the northwest section corner and traversed easterly, establishing a search area for the missing north one-quarter corner. No evidence of this corner could be found. I continued my traverse around Section 28, tying all necessary controlling corners to a closed loop traverse. Unable to find any evidence of the north one-quarter corner, I questioned local owners in the area about the location of the said corner. One owner indicated that the corner had been destroyed. He did not know the exact location of the corner point.