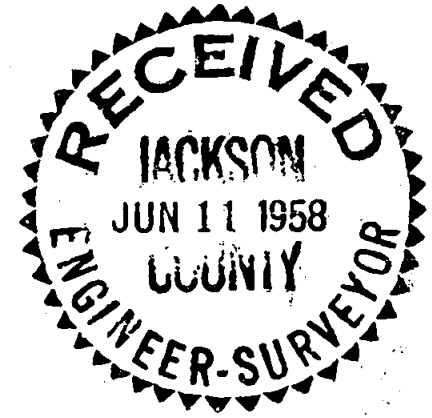


1126

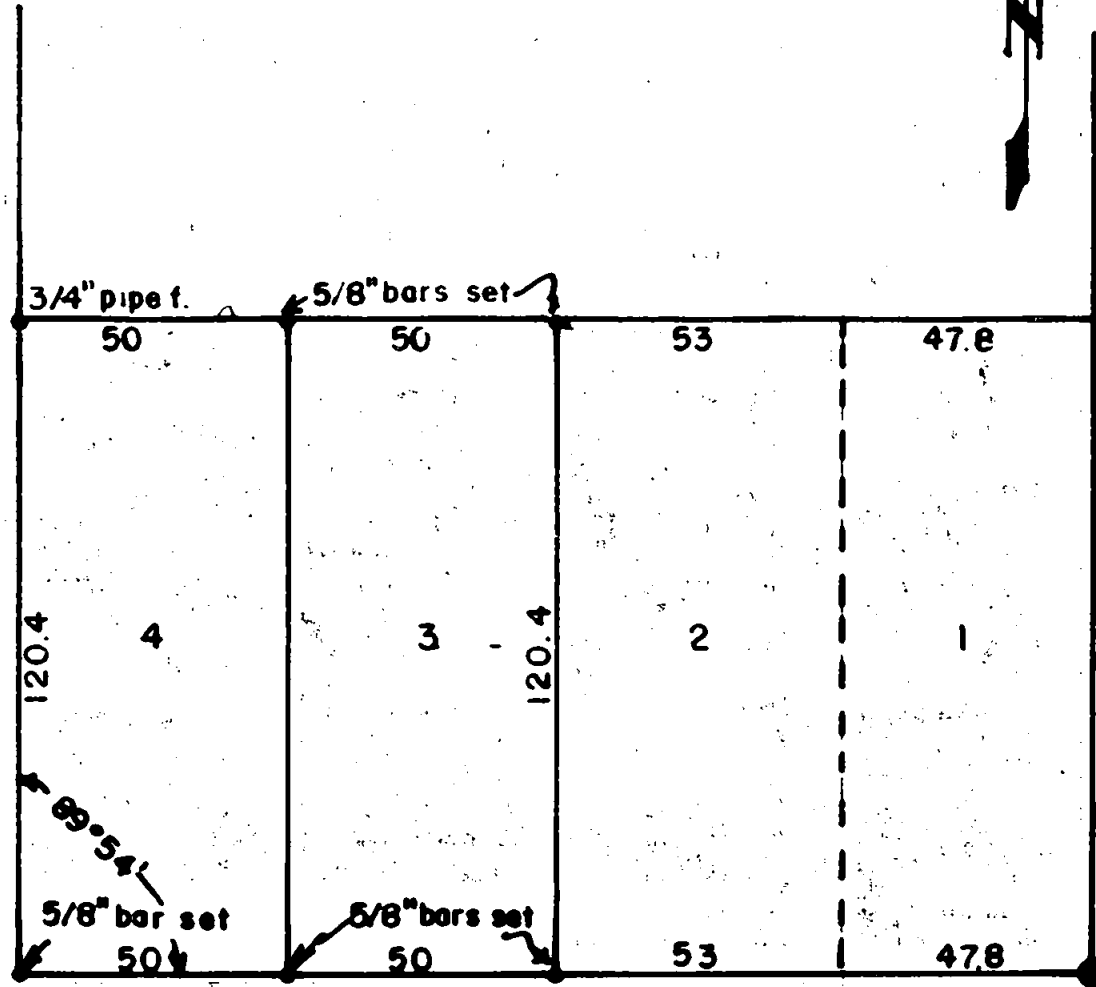
1126

1126

SURVEY FOR CHAS. BROOKS, MEDFORD, OREGON.
 IN HEIGHTS SUBDIVISION, MEDFORD.
 Date May 1958 Scale 1" = 40'



SUMMIT ST



REGISTERED
 OREGON
 LAND SURVEYOR

L. N. Dow

MAY 6, 1949
 L. N. DOW
 251

Sandstone with copper plug
 Initial point Heights Subd. found

1215
 Mon. found

CLARK ST

1126

Written narrative to accompany plat for survey NO.

Survey for Mr. Chas. Brooks, Medford, Oregon.

Located in Heights Subdivision, Medford, Oregon.

Date May 1958. Scale of tracing 1" = 50'

Procedure; Having the monument in the center of Summit Street and Clark Street we first ran by angle from Summit Street record distances to locate the Sandstone Monument with the copper slug that is the initial point for Heights Subdivision. It is buried approximately 16" below the surface of the ground and in fair repair. We then found a 3/4" pipe 170 feet north and 32.15 feet east of the monument at Summit and Clark which point checks a center as used on Mc Andrews Road.

With these controls we set 5/8" iron bars at the corners of lots 4 and 3 as shown on the plat.

