

11253

88-15466

See plat of Mill Pond Subdivision, A Planned Unit Development, Phase III, filed for record the 18th day of May, 1988 at 2:31¹⁰ o'clock P.M. and recorded in Volume 15 of plats at page 98 of records of Jackson County, Oregon for lot bearings and distances.

Examined and approved this 25th day of July 19 88

James H. Olson
City Surveyor

Filed for record this 2 day of August 19 88 at 3:46 o'clock P.M. and recorded in the Official Records of Jackson

County, Oregon.

Kathleen S. Beckett
County Clerk

Jay A. Rametes
Deputy

I, Everett L. Swain, duly Registered Surveyor of the State of Oregon, do hereby certify that this map represents a survey made by me or under my direction and the monuments conform to O.R.S. 92.060.

SWAIN SURVEYING, INC.

27 1/2 N. Main St.
Ashland, OR 97520

Dated: July 20, 1988

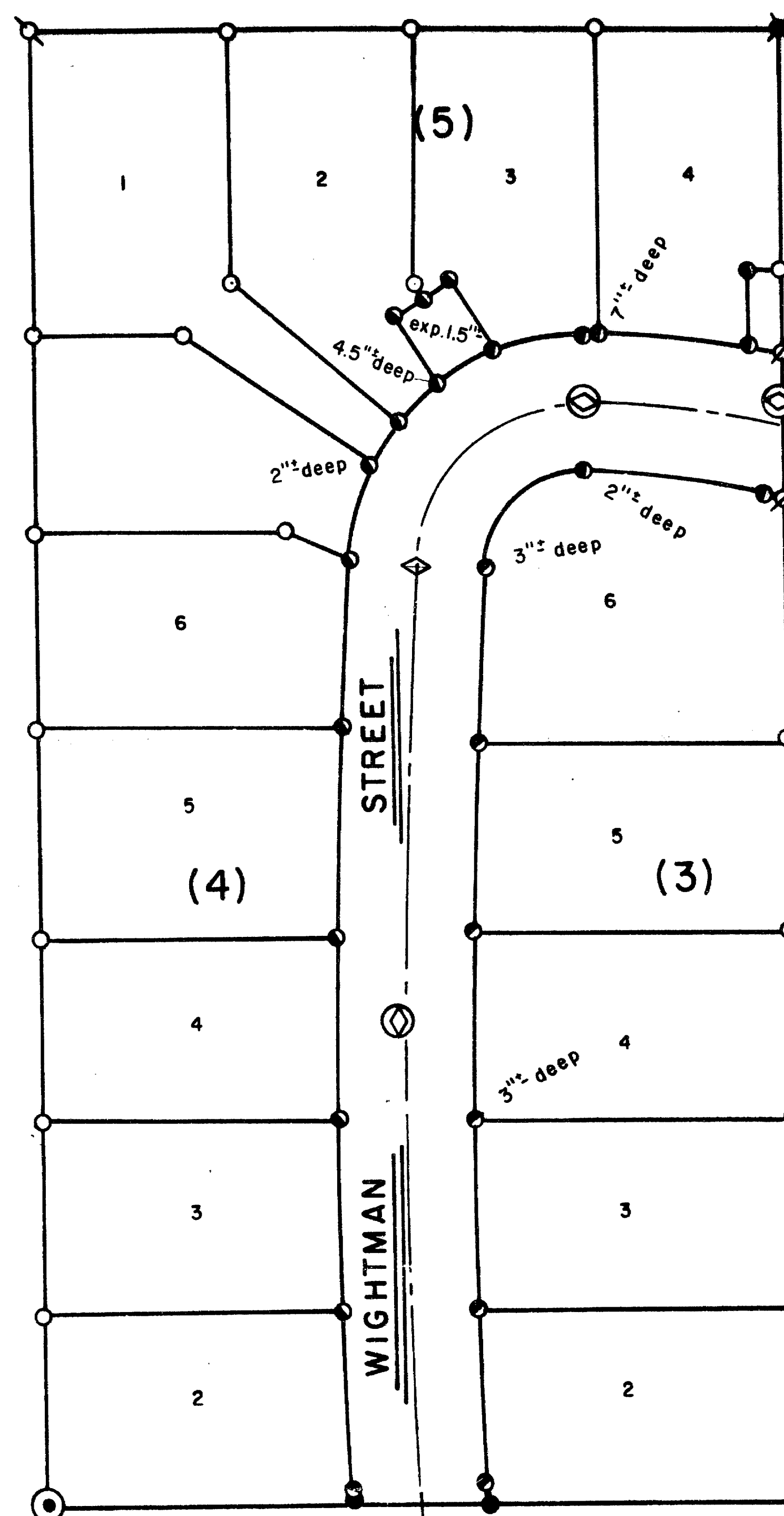
Scale: 1" = 50'

REGISTERED
PROFESSIONAL
LAND SURVEYOR

Everett L. Swain
OREGON
JULY 9, 1986
EVERETT L. SWAIN
759

88-15466

NORTH



**MILL POND SUBDIVISION
A PLANNED UNIT DEVELOPMENT, Phase III
TO THE CITY OF ASHLAND**

LOCATED IN D.L.C. No. 44 IN THE NW 1/4 OF SEC. 10, TWP. 39S., R1 E.W.M.
JACKSON COUNTY, OREGON

POST MONUMENTATION MAP

- ⊙ Monument per Original Subdivision Plat
- ⊕ Monument per Original Subdivision Plat
- ⊗ Monument per Original Subdivision Plat
- ⊗ Monument per Original Subdivision Plat
- Monument per Original Subdivision Plat
- ⊗ Monument per Original Subdivision Plat
- Monument per Original Subdivision Plat
- ⊗ Monument per Original Subdivision Plat
- Set 1/2 x 24 inch Galvanized Iron Pipe with Tack in Plastic Plug mkd: SWAIN LS 759
- ◇ Set 5/8 x 24 inch Iron Rod with Aluminum Cap mkd: SWAIN 1988 LS 759
- ⊕ Set 1 x 30 inch Galvanized Iron Pipe with 2-1/2 inch Bronze Cap mkd: LS 759 1988 in Monument Case

**** RECEIVED ****
Date 8/2/88 By JS
This survey consists of
1 sheet(s) Map
0 page(s) Narrative
JACKSON COUNTY
SURVEYOR

11253