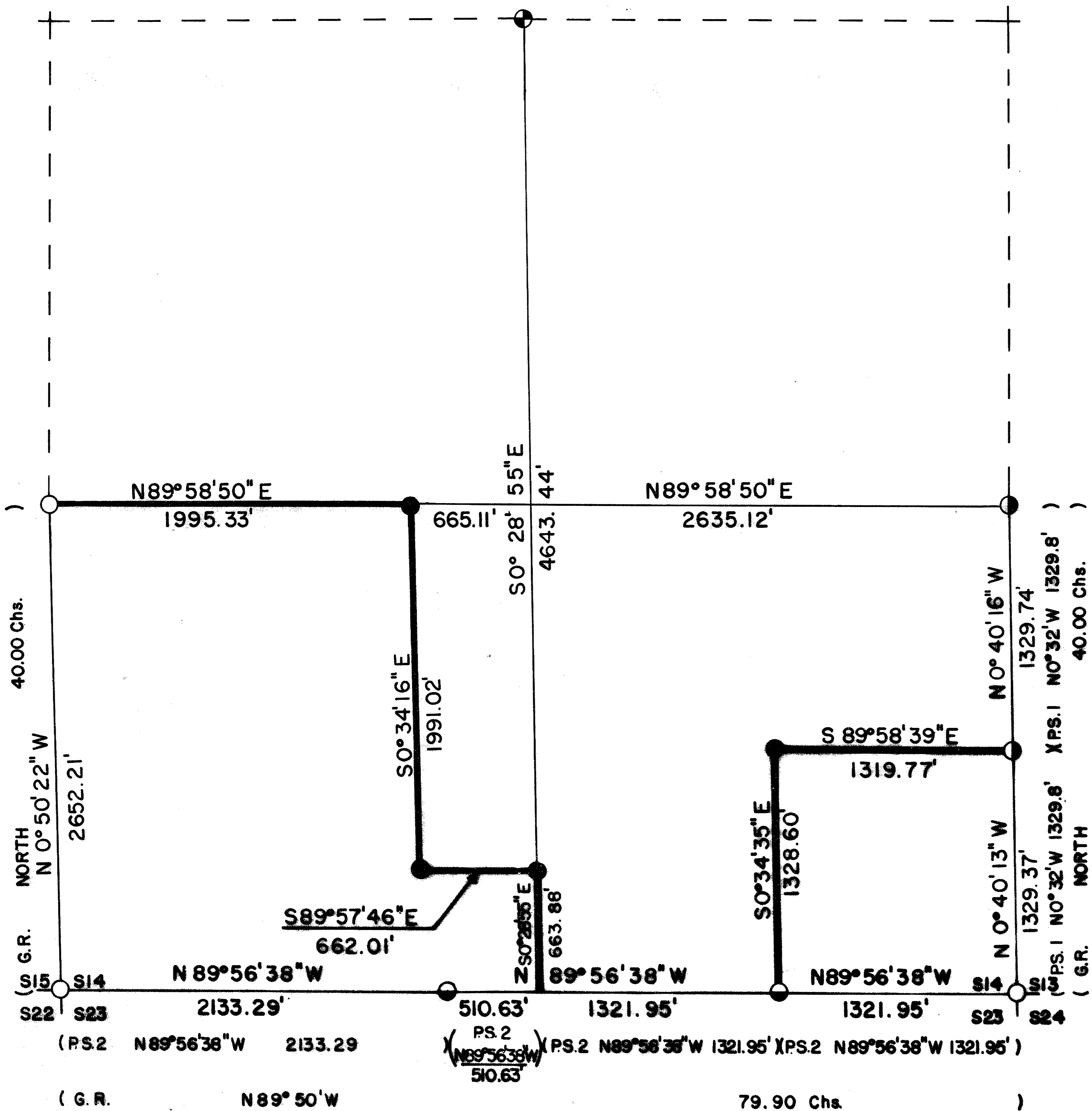


S14 T34S R1E W.M.



CERTIFICATE OF SURVEY

I, ARTHUR R. RAMBO, REGISTRATION No. 1086
 REGISTERED PROFESSIONAL LAND SURVEYOR
 STATE OF OREGON, HEREBY CERTIFY THAT
 THIS MAP CORRECTLY REPRESENTS A SURVEY
 MADE BY ME OR UNDER MY DIRECTION IN
 CONFORMANCE WITH THE LAWS OF THE
 STATE OF OREGON.



LEGEND

- SET 5/8" BY 30" REBAR WITH 1 1/2" ALUM. CAP
- FOUND STANDARD B.L.M. MONUMENT
- ⊙ FOUND COUNTY MONUMENT
- ⊙ FOUND MONUMENT SET SURVEY No. 4618
- ⊙ FOUND MONUMENT SET SURVEY No. 9205
- G.R. 1855 GOVERNMENT RECORD
- PS. 1 PRIVATE SURVEY No. 4618
- PS. 2 PRIVATE SURVEY No. 9205
- LINE POSTED AND BLAZED THIS SURVEY

BASIS OF BEARING

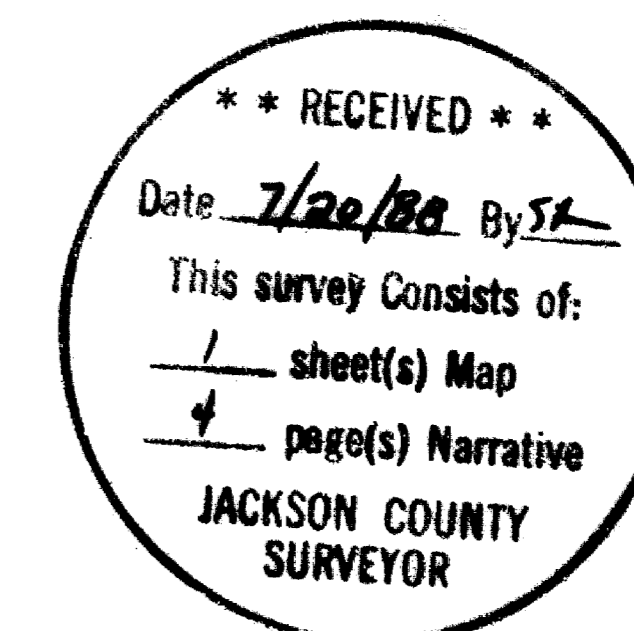
SURVEY No. 9205

SCALE

1" = 500'

DATE

JUNE 17, 1988



From which:

A 5½ inch dia. Oak bears N 16° 25' W 23.3 feet, marked CEW 1/64 S14 in upper face; BT in lower face.

A 9 inch dia. Oak bears S 60° 39' W 24.9 feet, marked CEW 1/64 in upper face; BT in lower face.

Southeast-Southwest one-sixtyfourth corner Section 14, Township 34 South, Range 1 East. At the corner location I set a 1½ inch dia. aluminum cap on a 5/8 by 30 inch rebar exposed 6 inches marked:

T34S R1E
S14
SESW + 1/64
LS 1086

From which:

A 4½ inch dia. Oak bears S 39° 00' E 3.9 feet, marked with an X in upper face; BT in lower face.

A 8 inch dia. Oak bears N 16° 42' W 12.8 feet, marked SESW 1/64 S14 in upper face; BT in lower face.

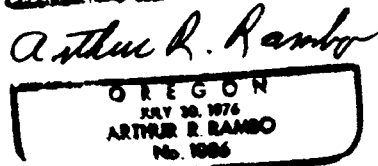
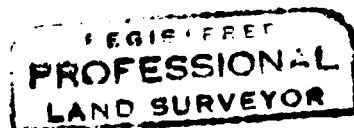
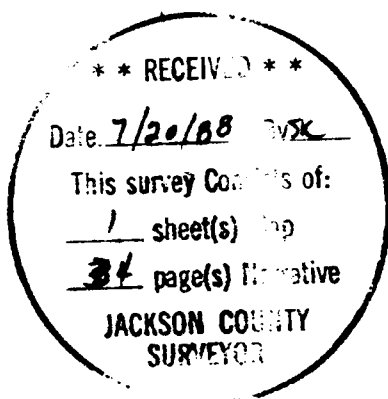
Center-South-South one-sixtyfourth corner Section 14, Township 34 South, Range 1 East. At the corner location I set a 1½ inch dia. aluminum cap on a 5/8 by 30 inch rebar exposed 11 inches, in a mound of stone, marked:

T34S R1E
S14
CSS + 1/64
LS 1086

From which:

A 9 inch dia. Oak bears S 19° 51' E 56.2 feet, marked CSS 1/64 S14 in upper face; BT in lower face.

An 8½ inch dia. Oak bears N 16° 32' E 74.9 feet, marked CSS 1/64 S14 in upper face; BT in lower face.



A 20½ inch dia. Fir bears S 13° 05' E 59.2 feet, unopened.

East one-sixteenth corner common to Sections 14 and 23, Township 34 South, Range 1 East. At the corner location I found a 1½ inch dia. aluminum cap on a 5/8 inch dia. rebar marked:

LS 1086
S14
E1 +
16
S23
T34S R1E

From which:

- A 12½ inch dia. Oak bears S 38° 07' E 35.9 feet, marked E1/16 S23 in upper face; BT with brass washer stamped LS 1086 tacked in lower face.
- An 11 inch dia. Pine bears N 22° 54' W 48.5 feet, marked E1/16 S14 in upper face; BT with brass washer stamped LS 1086 in lower face.

Witness corner for the one-quarter corner common to Sections 14 and 23, Township 34 South, Range 1 East. At the witness corner location I found a 1½ inch dia. aluminum cap on a 5/8 inch dia. rebar marked:

LS 1086
S14
1/4 WC →
4
S23
T34S R1E

From which:

- A 7 inch dia. Oak bears S 4° 20' W 12.9 feet, marked WC 1/4 S23 in upper face; BT with brass washer stamped LS 1086 in lower face.
- A 6½ inch dia. Oak bears N 39° 31' E 28.4 feet, marked WC 1/4 S14 in upper face; BT with a brass washer stamped LS 1086 in lower face.

CORNERS SET THIS SURVEY:

All measurements to bearing trees are to the center of tree at the base unless otherwise stated. All bearing trees have a brass washer stamped LS 1086 nailed to the lower face of the tree.

Southeast one-sixteenth corner Section 14, Township 34 South, Range 1 East. At the corner location I set a 1½ inch aluminum cap on a 5/8 by 30 inch rebar exposed 10 inches marked:

T34S R1E
S14
SE + 1/16
LS1086

From which:

- A 5½ inch dia. Oak bears N 53° 29' E 14.6 feet, marked a X in the upper face; BT in lower face.
- An 5 inch dia. Oak bears S 11° 30' W 24.0 feet, marked SE 1/16 S14 in upper face; BT in lower face.

Center-East-West one-sixtyfourth corner Section 14, Township 34 South, Range 1 East. At the corner location I set a 1½ inch dia. Aluminum cap on a 5/8 by 30 inch rebar exposed 10 inches, in a mound of stone, marked:

T34S R1E
S14
CEW + 1/64
LS 1086

T34S R1E
 1/4
 S15 S14
 1957

From which:

An 18 inch dia. Fir bears N 5° 19' E 77.7 feet, unopened.
 An 19 inch dia. Fir bears N 42° 21' W 79.6 feet, unopened.

One-quarter corner common to Sections 11 and 14, Township 34 South, Range 1 East. At the corner location I found a Jackson County monument exposed 3 inches, in a mound of stone, marked:

Jackson County
 T34S R1E
 $\frac{1S}{4} \frac{11}{14}$
 1975

From which:

An 8½ inch dia. Oak bears N 27° 04' E 39.5 feet, unopened.
 A 12½ inch dia. Pine bears S 22° 20' E 28.7 feet, unopened.

One-quarter corner common to Sections 13 and 14, Township 34 South, Range 1 East. At the corner location I found a 1½ inch dia. aluminum cap on a 5/8 inch dia. rebar exposed 11 inches, in a mound of stone, marked:

RS 461
 $\frac{1}{4}$
 S14 S13

From which:

An 11 inch dia. Pine bears S 2° 32' E 31.2 feet, unopened.
 A 9 inch dia. Pine bears N 19° 28' W 46.0 feet, marked 1/4 S14 RS461 BT in one face.

South one-sixteenth corner common to Sections 13 and 14, Township 34 South, Range 1 East. At the corner location I found a 1½ inch dia. aluminum cap on a 5/8 inch dia. rebar exposed 13 inches, in a mound of stone, marked:

RS 461
 S S S
 14 $\frac{1}{16}$ 13

From which:

A 14½ inch dia. Fir bears S 8° 01' E 11.2 feet, unopened.
 A 6 inch dia. Fir bears N 36° 12' W 27.4 feet, unopened.

Section corner common to Sections 13, 14, 23, and 24, Township 34 South, Range 1 East. At the corner location I found a Jackson County monument marked:

T34S R1E
 Sec 14 | 13 Cor
 23 | 24
 C.S.
 1967

From which:

A 4½ inch dia. Oak bears S 31° 18' W 5.7 feet, unopened.
 A 10 inch dia. Cedar bears N 59° 43' W 29.8 feet, with scribe visible in partially healed faces.
 A 19 inch dia. Oak snag bears N 28° 36' E 25.7 feet, with chopped out rotted face, no scribe visible.
 An 8 inch dia. Pine bears S 84° 27' E 12.5 feet, with scribe visible in partially healed faces.
 A 12 inch dia down Oak bears S 61° 01' E 61.1 feet, to center of stump.

SURVEY NARRATIVE TO COMPLY WITH O.R.S. 209.250

Location: Section 14, Township 34 South, Range 1 East, Willamette Meridian,
Jackson County, Oregon.

Survey for: Medford Corporation
P. O. Box 550
Medford, Oregon 97501

Survey by: Arthur R. Rambo PLS 1086
735 Vista Park Drive
Eagle Point, Oregon 97524

Date: June 17, 1988

Purpose: To mark and post the boundaries of Medford Corporation lands in the
South half of said Section 14, as shown on the plat to accompany this
narrative.

Procedure: The original survey of Section 14 was completed by Ives and Hyde under
contract #47 dated August 18, 1854. The original corners needed for
control of this survey have been re-established from original evidence
or by proportionate measurement.

I performed a closed traverse survey beginning from Survey #9205 at the
Southwest corner, then I proceeded to the West one-quarter corner, then
to the North one-quarter corner, then to the East one-quarter corner,
then to the South one-sixteenth corner common to Section 13 and 14, then
to the Southeast corner closing to Survey #9205. Then I performed
closed traverses of the interior lines needed, beginning and closing on
the exterior lines of the section. I set corners and posted lines as
shown on the plat to accompany this narrative.

CORNERS FOUND AND ACCEPTED FOR CONTROL:

All measurements to bearing trees are to the center of tree at the base unless
otherwise stated.

Section corner common to Sections 15, 14, 22, and 23, Township 34 South, Range 1 East.
At the corner location I found a standard Bureau of Land Management monument marked:

T34S	R1E
S15	S14
S22	S23
1957	

From which:

- A 15½ inch dia. Fir bears S 29° 03' E 18.9 feet, marked with unopened faces.
- A 16½ inch dia. Fir bears S 43° 50' W 18.3 feet, marked with unopened faces.
- A 19 inch dia. Pine stump bears S 89° 46' W 36.8 feet, marked 22 inch upper face.
- A 17 inch dia. Fir bears N 52° 39' W 22.5 feet, unopened.
- A 27 inch dia. Pine stump bears N 6° 13' W 29.9 feet, unopened.
- A 13 inch dia. Fir bears N 69° 54' E 5.3 feet, unopened.

One-quarter corner common to Sections 14 and 15, Township 34 South, Range 1 East. At
the corner location I found a standard Bureau of Land Management monument exposed 12½
inches marked: