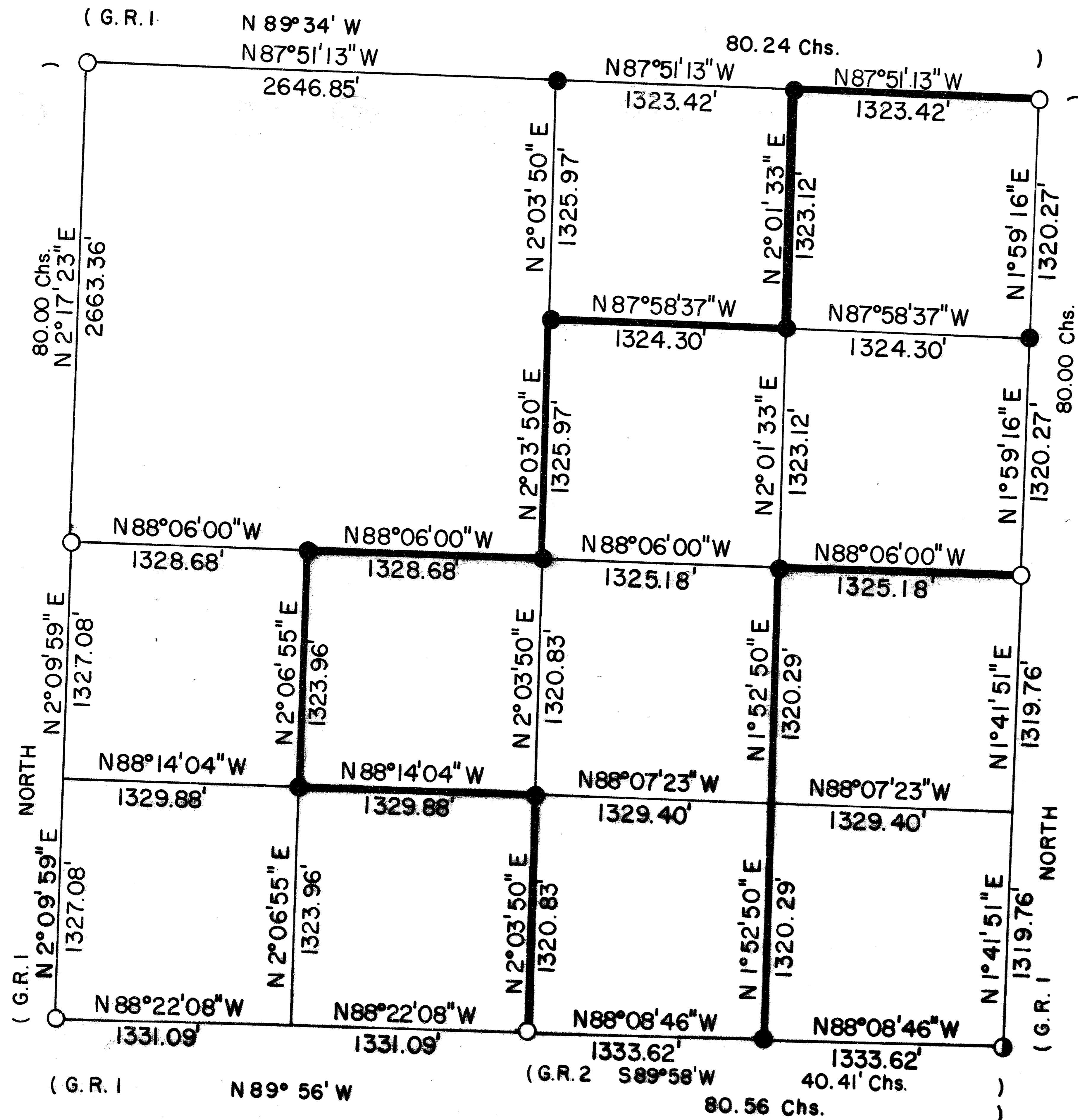
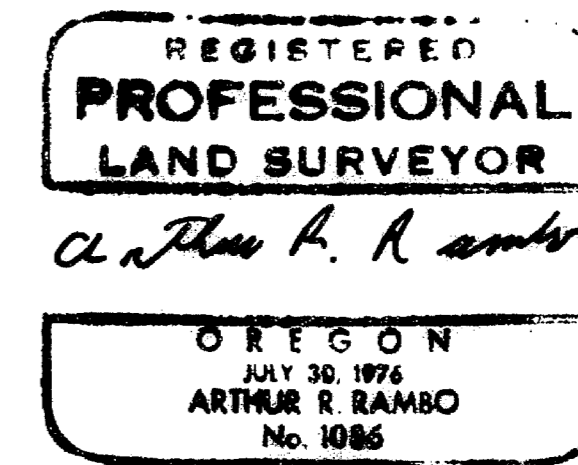


S16 T35S R1E W. M.



CERTIFICATE OF SURVEY

I, ARTHUR R. RAMBO, REGISTRATION No. 1086 REGISTERED PROFESSIONAL LAND SURVEYOR STATE OF OREGON, HEREBY CERTIFY THAT THIS MAP CORRECTLY REPRESENTS A SURVEY MADE BY ME OR UNDER MY DIRECTION IN CONFORMANCE WITH THE LAWS OF THE STATE OF OREGON.



LEGEND

- FOUND COUNTY MONUMENT
- FOUND STANDARD B.L.M. MONUMENT
- SET 5/8" BY 30" REBAR WITH 1/2" ALUM. CAP
- G.R. 1 1854 GOVERNMENT RECORD
- G.R. 2 1984 GOVERNMENT RECORD
- LINE POSTED AND BLAZED THIS SURVEY

SCALE

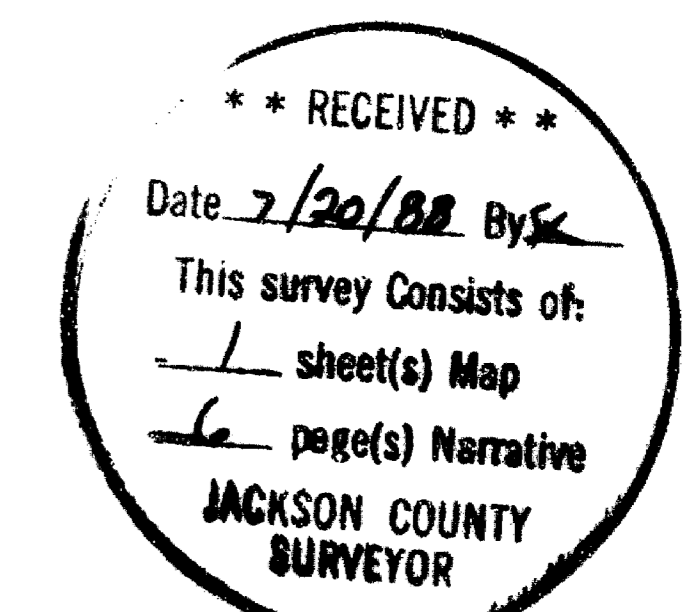
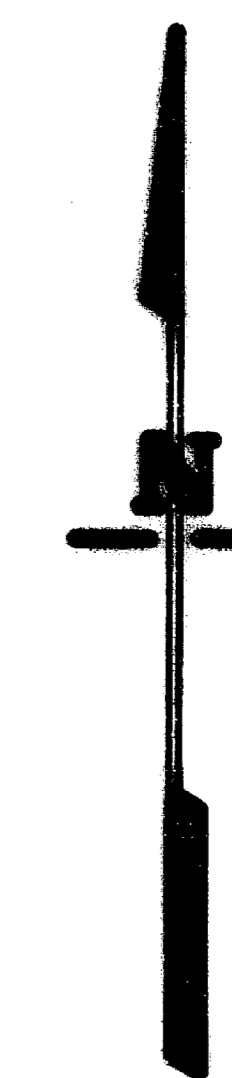
1" = 500'

DATE

JUNE 17, 1988

BASIS OF BEARING

SOLAR OBSERVATION



Northeast one-sixteenth corner Section 16, Township 35 South, Range 1 East. At the corner I set a 2 inch dia. aluminum cap on a 5/8 by 30 inch rebar exposed 7 inches in a mound of stone, marked:

T35S R1E
S16
NE . 1/16
LS 1086

From which:

- A 9 inch dia. Oak bears N 81° 06' W 84.3 feet, marked NE1/16S16 in upper face, BT in lower face.
- A 9½ inch dia. Oak bears S 0° 37' E 101.7 feet, marked NE1/16S16 in upper face, BT in lower face.

** RECEIVED **

Date 7/20/88 By X

This survey Consists of:

1 sheet(s) Map

6 page(s) Narrative

JACKSON COUNTY
SURVEYOR

PROFESSIONAL
LAND SURVEYOR

Arthur R. Hamb

EXPIRES 1995
MURKIN, IOWA
NO. 030

From which:

- A 9 inch dia. Oak bears N 32° 58' W 22.9 feet, marked CS1/16S16 in upper face, BT in lower face.
 A 23 inch dia. Oak bears N 62° 11' E 59.0 feet, marked CS1/16S16 in upper face, BT in lower face.

Southwest one-sixteenth corner Section 16, Township 35 South, Range 1 East. At the corner location I set a 2 inch dia. aluminum cap on a 5/8 by 30 inch rebar exposed 12 inches, in a mound of stone, marked:

T35S R1E
 S16
 SW . 1/16
 LS 1086

From which:

- A 17 inch dia. Oak bears S 31° 49' E 51.1 feet, marked SW1/16S16 in upper face, BT in lower face.
 An 11½ inch dia. Oak bears N 67° 33' E 71.5 feet, marked SW1/16S16 in upper face, BT in lower face.

Centerwest one-sixteenth corner Section 16, Township 35 South, Range 1 East. At the corner location I set a 2 inch dia. aluminum cap on a 5/8 by 30 inch rebar exposed 13 inches, in a mound of stone, marked:

T35S R1E
 S16
 CW . 1/16
 LS 1086

From which:

- An 11½ inch dia. Oak bears S 59° 36' E 101.7 feet, marked CW1/16S16 in upper face, BT in lower face.
 A 9 inch dia. Oak bears S 26° 41' W 97.7 feet, marked CS1/16S16 in upper face, BT in lower face.

Center one-quarter corner Section 16, Township 35 South, Range 1 East. At the corner location I set a 2 inch dia. aluminum cap on a 5/8 by 30 inch rebar exposed 9 inches, in a mound of stone, marked:

T35S R1E
 S16
 C . 1/4
 LS 1086

From which:

- A 7½ inch dia. Oak bears N 36° 34' W 32.7 feet, marked C1/4S16 in upper face, BT in lower face.
 An 8 inch dia. Oak bears N 81° 48' E 34.1 feet, marked C1/4S16 in upper face, BT in lower face.

Centernorth one-sixteenth corner Section 16, Township 35 South, Range 1 East. At the corner location I set a 2 inch dia. aluminum cap on a 5/8 by 30 inch rebar exposed 13 inches, in a mound of stone, marked:

T35S R1E
 S16
 CN . 1/16
 LS 1086

From which:

- A 10 inch dia. Oak bears S 20° 06' W 11.2 feet, marked CN1/16S16 in upper face, BT in lower face.
 A 6 inch dia. Oak bears S 47° 51' E 11.2 feet, marked CN1/16S16 in upper face, BT in lower face.

From which:

A 6 inch dia. Oak bears N 38° 27' E 26.4 feet, marked E1/16S9 in upper face, BT in lower face.

A 6 inch dia. Oak bears S 32° 28' W 26.2 feet, marked E1/16S16 in upper face, BT in lower face.

North one-sixteenth corner common to Sections 15 and 16, Township 35 South, Range 1 East. At the corner location I set a 2 inch dia. aluminum cap on a 5/8 by 30 inch rebar exposed 17 inches in a mound of stone, marked:

T35S R1E
N 1/16
S16 · S15
LS 1086

From which:

A 12½ inch dia. Oak bears S 71° 45' W 32.8 feet, marked N1/16S16 in upper face, BT in lower face.

A 7 inch dia. Oak bears S 22° 30' E 18.1 feet, marked N1/16S15 in upper face, BT in lower face.

East one-sixteenth corner common to Sections 16 and 21, Township 35 South, Range 1 East. At the corner location I set a 2 inch dia. aluminum cap on a 5/8 by 30 inch rebar exposed 10 inches, in a mound of stone, marked:

T35S R1E
S16
E . 1/16
S21
LS 1086

From which:

An 11 inch dia. Oak bears S 63° 56' E 46.1 feet, marked E1/16S21 in upper face, BT in lower face.

A 13½ inch dia. Oak bears N 73° 51' W 19.3 feet, marked E1/16S16 in upper face, BT in lower face.

Centereast one-sixteenth corner Section 16, Township 35 South, Range 1 East. At the corner location I set a 2 inch dia. aluminum cap on a 5/8 by 30 inch rebar exposed 15 inches in a mound of stone, marked:

T35S R1E
S16
CE . 1/16
LS 1086

From which:

A 6 inch dia. Oak bears N 67° 23' W 26.3 feet marked CE1/16S16 in upper face, BT in lower face.

A 10½ Oak bears N 89° 04' E 30.9 feet, marked CE1/16S16 in upper face, BT in lower face.

Centersouth one-sixteenth corner Section 16, Township 35 South, Range 1 East. At the corner location I set a 2 inch dia. aluminum cap on a 5/8 by 30 inch rebar exposed 12 inches, in a mound of stone, marked:

T35S R1E
S16
CS . 1/16
LS 1086

One-quarter corner common to Sections 16 and 17, Township 35 South, Range 1 East. At the corner location I found a 2½ inch dia. bronze disc exposed 7 inches, Jackson County Surveyor monument marked:

T35S R1E
 14S
 17 | 16
 Jackson County 1974

From which:

- A 13½ inch dia. Oak bears N 80° 13' E 37.1 feet, with 1/4S visible in opened upper face.
- A 17 inch dia. Oak bears N 58° 27' W 18.9 feet, no scribe visible in opened upper face.
- An 11½ inch dia. Pine bears N 25° 04' E 57.4 feet, with B visible in partially healed lower face.

Section corner common to Sections 8, 9, 16, and 17, Township 35 South, Range 1 East. At the corner location I found a 2½ inch dia. bronze disc exposed 5 inches in a mound of stone, Jackson County Surveyor monument marked:

T35S R1E
 S8 | S9
 S17 | S16
 Jackson County 1974

From which:

- A 7½ inch dia. Oak bears N 30° 47' W 28.2 feet, unopened.
- A 7 inch dia. Oak bears N 65° 00' E 39.0 feet, unopened.
- A 11½ inch dia. Pine bears S 31° 56' E 29.8 feet, unopened.
- A 7 inch dia. Oak bears S 33° 28' W 52.3 feet, with scribe visible in partially healed upper and lower face.

CORNERS SET THIS SURVEY:

All measurements to bearing trees are to the center of tree at the base unless otherwise stated. All bearing trees have a brass washer marked LS 1086 nailed to the BT face of tree.

One-quarter corner common to Sections 9 and 16, Township 35 South, Range 1 East. At the corner location I set a 2 inch dia. aluminum cap on a 5/8 by 30 inch rebar exposed 18 inches in a mound of stone, marked:

T35S R1E
 S9
 1/4 .
 S16
 LS 1086

From which:

- A 20 inch dia. Madrona bears S 32° 29' W 36.4 feet, marked 1/4S16 in upper face, BT in lower face.
- A 4 inch dia. Madrona bears N 53° 16' E 19.7 feet, marked 1/4S9 in upper face, BT in lower face.

East one-sixteenth corner common to Sections 9 and 16, Township 35 South, Range 1 East. At the corner location I set a 2 inch dia. aluminum cap on a 5/8 by 30 inch rebar exposed 14 inches in a mound of stone, marked:

T35S R1E
 S9
 E . 1/16
 S16
 LS 1086

One-quarter corner common to Sections 15 and 16, Township 35 South, Range 1 East. At the the corner location I found a 2½ inch dia. bronze disc on a 1 inch dia. C.I. pipe exposed 5 inches in a mound of stone, marked:

T35S R1E
1/4S
16 | 15
Jackson County

From which:

- A 4 inch dia. Oak bears N 89° 55' E 32.7 feet, marked CS in upper face, BT in lower face.
- An 1½ inch dia. Fir bears N 71° 17' W 69.9 feet, unopened.

Section corner common to Sections 15, 16, 21, and 22, Township 35 South, Range 1 East. At the corner location I found a standard Bureau of Land Management monument marked:

T35S R1E
16 | 15
21 | 22
1981

From which:

- A 4½ inch dia. Oak bears S 54° 40' E 30.9 feet, with scribe visible in partially healed face.
- A 12 inch dia. Fir bears S 10° 50' W 49.4 feet, with scribe visible in a partially healed face.
- An 8½ inch dia. Oak bears N 87° 35' W 20.5 feet, with scribe visible in a partially healed face.
- A 10 inch dia. Oak bears N 7° 30' E 44.2 feet, with scribe visible in a partially healed face.

One-quarter corner common to Sections 16 and 21, Township 35 South, Range 1 East. At the corner location I found a 2½ inch dia. bronze disc exposed 6½ inches in a mound of stone, Jackson County Surveyor monument marked:

Jackson County
T35S R1E
1/4S 16
21
1974

From which:

- A 12 inch dia. Pine bears N 69° 21' W 43.1 feet, unopened.
- A 14 inch dia. Oak bears N 9° 55' W 82.5 feet, no scribe visible in opened face.
- A 15½ inch dia. Oak bears S 18° 50' W 53.5 feet, marked CS in upper face, BT in lower face.

Section corner common to Sections 16, 17, 20 and 21, Township 35 South, Range 1 East. At the corner location I found a 2½ inch dia. bronze disc exposed 6 inches in a mound of stone, Jackson County Surveyor monument marked:

T35S R1E
S17 | S16 1974
S20 | S21
Jackson County

From which:

- A 14½ inch dia. Oak bears N 42° 36' W 34.7 feet, unopened.
- A 13½ inch dia. Fir snag bears N 70° 07' E 34.1 feet, marked CS in upper face, BT in lower face.
- A 10 inch dia. Oak bears S 39° 11' E 32.6 feet, marked CS in upper face, BT in lower face.
- A 16½ inch dia. Pine bears S 38° 47' W 42.9 feet, unopened.
- A drift fence corner bears East 14 inches.

SURVEY NARRATIVE TO COMPLY WITH O.R.S. 209.250

Location: Section 16, Township 35 South, Range 1 East, Willamette Meridian,
Jackson County, Oregon.

Survey for: Medford Corporation
P. O. Box 550
Medford, Oregon 97501

Survey by: Arthur R. Rambo PLS 1086
735 Vista Park Drive
Eagle Point, Oregon 97524

Date: June 17, 1988

Purpose: To mark and post the boundaries of Medford Corporation land in the
Northeast quarter, Southwest quarter, and Southeast quarter of said
section as shown on the plat to accompany this narrative.

Procedure: A search of the records revealed that the original survey of Section 16
was completed by Ives and Hyde under contract #47, dated August 18,
1854. A resurvey of the East half of the South line was completed by
the Bureau of Land Management in 1984. The Northeast, East one-quarter,
South one-quarter, Southwest, West one-quarter, and Northwest corners of
Section 16 were reestablished by the Jackson County Surveyor from
original evidence. The Southeast corner was reestablished by the Bureau
of Land Management Cadastral Surveyor from original evidence. No
evidence of the North one-quarter corner of Section 16 was found.

I performed a closed traverse survey beginning at the Northeast corner,
then I proceeded to the East one-quarter corner, then to the Southeast
corner, then to the South one-quarter corner, then to the Southwest
corner, then to the West one-quarter corner, then to the Northwest
corner, then back to the Northeast corner closing the survey. I
calculated a position for the North one-quarter corner and made another
search for the corner. I could find no original evidence of the corner.
I set the corner by single proportionate measurement. Then I performed
a closed traverse of the interior lines, beginning and closing to the
exterior lines. I set corners and posted lines as shown on the plat to
accompany this narrative.

CORNERS FOUND AND ACCEPTED FOR CONTROL:

All measurements to bearing trees are to the center of tree at the base unless
otherwise stated.

Section corner common to Sections 9, 10, 15, and 16, Township 35 South, Range 1 East.
At the corner location I found a 2 inch diameter iron pipe exposed 7 inches in a mound
of stone set by the Jackson County Surveyor.

From which:

- A 12 inch dia. Oak bears N 30° 17' E 8.6 feet, with a healed face.
- A 9 inch dia. Oak stub bears N 27° 23' W 103.3 feet, with unopened upper and
lower faces.
- An 18 inch dia. Oak stub bears S 35° 50' W 58.9 feet, upper face rotted out.
- A 23 inch dia. dead and down Oak bears S 31° 34' E 74.9 feet, to the base of
tree, both upper and lower faces rotted out.
- An 11 inch dia. Oak bears S 42° 12' E 110.0 feet, with unopened upper and lower
faces.