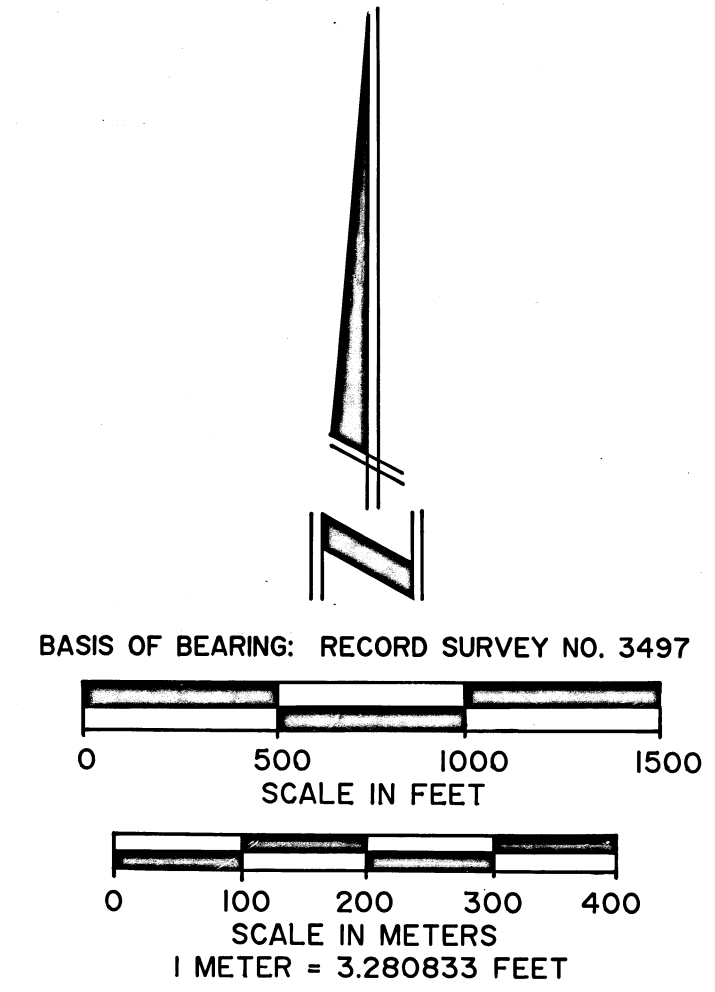
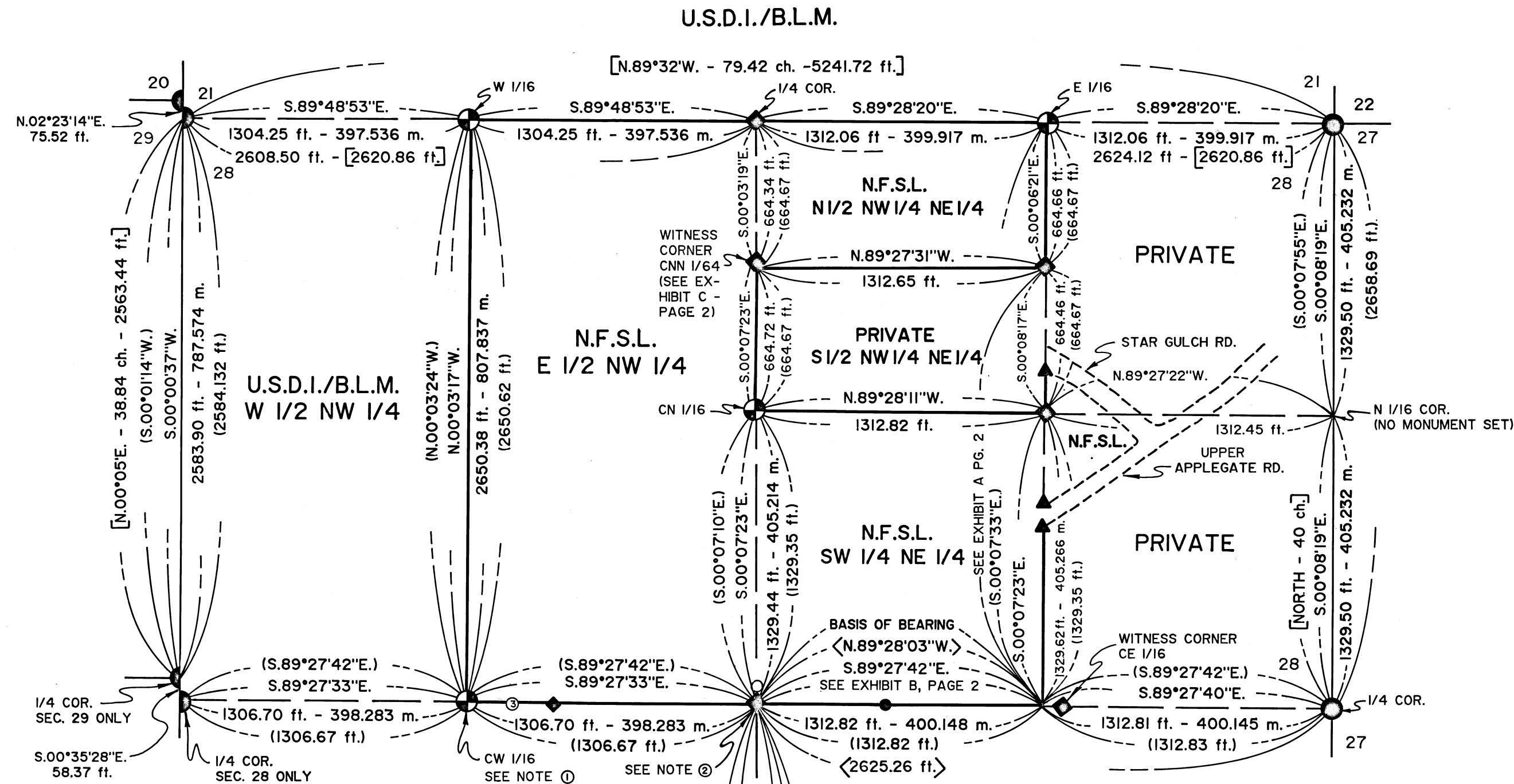


MAP OF SURVEY FOR ROGUE RIVER NATIONAL FOREST P.O. BOX 520 MEDFORD, OREGON MARCH 17, 1988



LEGEND

- ⊙ SET 2 1/2 INCH X 32 INCH IRON POST WITH A 2 1/2 INCH DIAMETER BRASS CAP ATTACHED.
- ⊙ MONUMENT SET BY JACKSON COUNTY SURVEYOR, 1980.
- ⬠ MONUMENT SET BY J.A. HOFFBUHR, P.L.S. 222, PER RECORD SURVEY 3497, 1967.
- ⊙ MONUMENT SET BY GENERAL LAND OFFICE, 1917.
- 5/8 INCH IRON PIN WITH PLASTIC CAP SET BY R.L. BATH, P.L.S. 1067, PER RECORD SURVEY 9002, 1981.
- ◆ 5/8 INCH IRON PIN SET BY J.A. HOFFBUHR, P.L.S. 222, PER RECORD SURVEY 5150, 1973.
- 3/4 INCH IRON PIPE
- ▲ SET 5/8 INCH DIAMETER IRON PIN WITH ALUMINUM CAP MARKED LINE MONUMENT L.S. 1071 - SEE EXHIBIT A.
- ⓪ SEE NOTES
- [] GOVERNMENT RECORD
- () HOFFBUHR, P.L.S. 222, RECORD SURVEY 3497, 1967
- < > M. CLARK, P.L.S. 601, RECORD SURVEY 8947, 1981
- — — LINES POSTED AND BLAZED THIS SURVEY
- — — CALCULATED LINES FROM TRAVERSE SURVEY
- - - - EDGE OF EXISTING ROAD - STAR GULCH & UPPER APPLIGATE ROADS
- N.F.S.L. NATIONAL FOREST SYSTEM LANDS
- U.S.D.I./B.L.M. UNITED STATES DEPARTMENT OF INTERIOR/BUREAU OF LAND MANAGEMENT

HISTORY OF SURVEYS

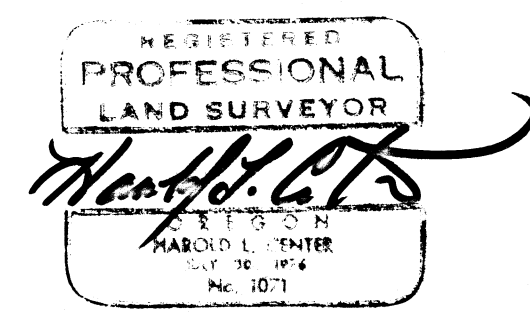
SEE ATTACHED NARRATIVE

NOTES

- ⓪ FOUND 5/8 INCH IRON PIN SET BY J.A. HOFFBUHR, P.L.S. 222, DURING RECORD SURVEY 5150 IN 1973. REMONUMENTED DIRECTLY OVER SAID IRON PIN.
- ⓪ A 3/4 INCH DIAMETER IRON PIPE BEARS N.01°18'33"E., 18.67 FT.
- ⓪ S.89°24'30"E., 399.49 FT. - HOFFBUHRS RECORD = N.89°27'08"W., 400.00 FT. - R.S. NO. 5150.

CERTIFICATE OF SURVEY

I, HAROLD L. CENTER, REGISTRATION NO. 1071, REGISTERED PROFESSIONAL LAND SURVEYOR, STATE OF OREGON, HEREBY CERTIFY THAT THIS PLAT CORRECTLY REPRESENTS A SURVEY MADE BY ME OR UNDER MY DIRECT SUPERVISION IN CONFORMANCE WITH THE LAWS OF THE STATE OF OREGON AT THE REQUEST OF THE UNITED STATES FOREST SERVICE.



** RECEIVED **
Date 4-29-88 By SK
This survey consists of:
2 sheet(s) Map
10 page(s) Narrative
JACKSON COUNTY SURVEYOR

PROJECT NO. 87-3

U.S. DEPARTMENT OF AGRICULTURE
FOREST SERVICE
REGION 6 - ROGUE RIVER NATIONAL FOREST

DEPENDENT RESURVEY
AND
SECTION SUBDIVISION
Sec. 28, T.39S., R.3W., W.M.
JACKSON COUNTY, OREGON

REVIEWED BY: John M. Bell DATE: 4/27/88
REVIEWED BY: Donald L. Ewing DATE: 4/27/88

LEGEND

- ◆ MONUMENT SET BY J.A. HOFFBUHR, P.L.S. 222, PER RECORD SURVEY 3497, 1967.
- 2 1/2 INCH DIAMETER BRASS CAP MONUMENT MARKED: U.S.F.S., WORKING CORNER, E/W LINE.
- ▲ SET 5/8 INCH DIAMETER IRON PIN WITH ALUMINUM CAP MARKED LINE MON. L.S. 1071.
- 5/8 INCH IRON PIN WITH PLASTIC CAP SET BY R.L. BATH, P.L.S. 1067, PER RECORD SURVEY 9002, 1981.
- ⊗ RECOVERED RIGHT-OF-WAY PIN.
- () BATH, P.L.S. 1067, RECORD SURVEY 9002.
- LINES POSTED AND BLAZED THIS SURVEY.
- - - CALCULATED LINES FROM TRAVERSE SURVEY.
- - - CENTERLINE OF EXISTING ROADS
- N.F.S.L. NATIONAL FOREST SYSTEM LANDS

CERTIFICATE OF SURVEY

I, HAROLD L. CENTER, REGISTRATION NO. 1071, REGISTERED PROFESSIONAL LAND SURVEYOR, STATE OF OREGON, HEREBY CERTIFY THAT THIS PLAT CORRECTLY REPRESENTS A SURVEY MADE BY ME OR UNDER MY DIRECT SUPERVISION IN CONFORMANCE WITH THE LAWS OF THE STATE OF OREGON AT THE REQUEST OF THE UNITED STATES FOREST SERVICE.

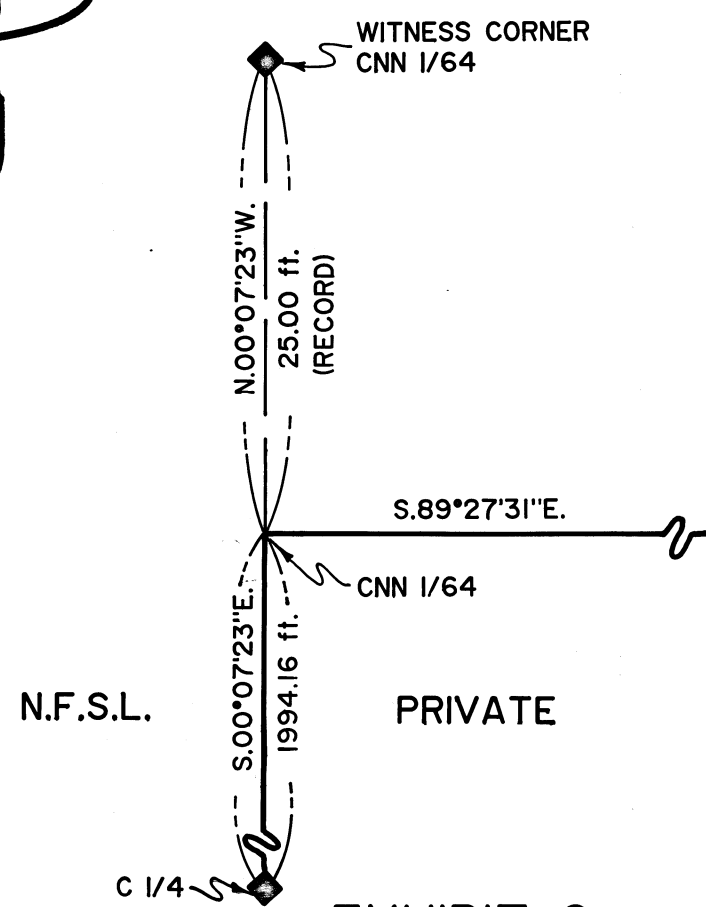


EXHIBIT C
SCALE: 1 INCH = 10 FT.

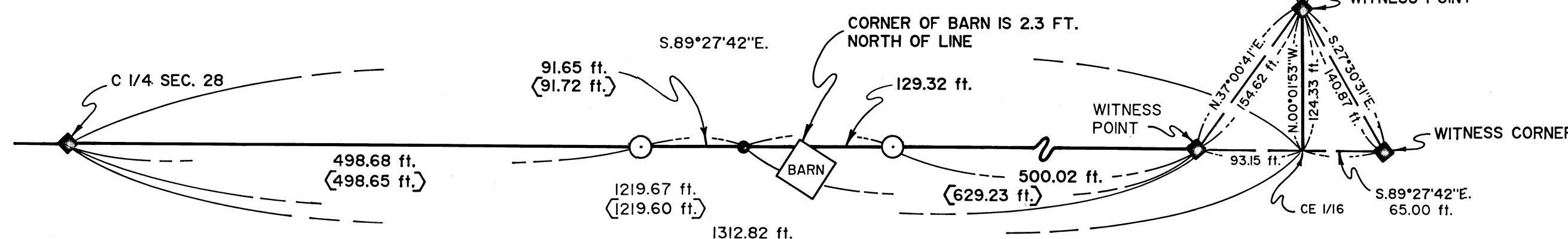
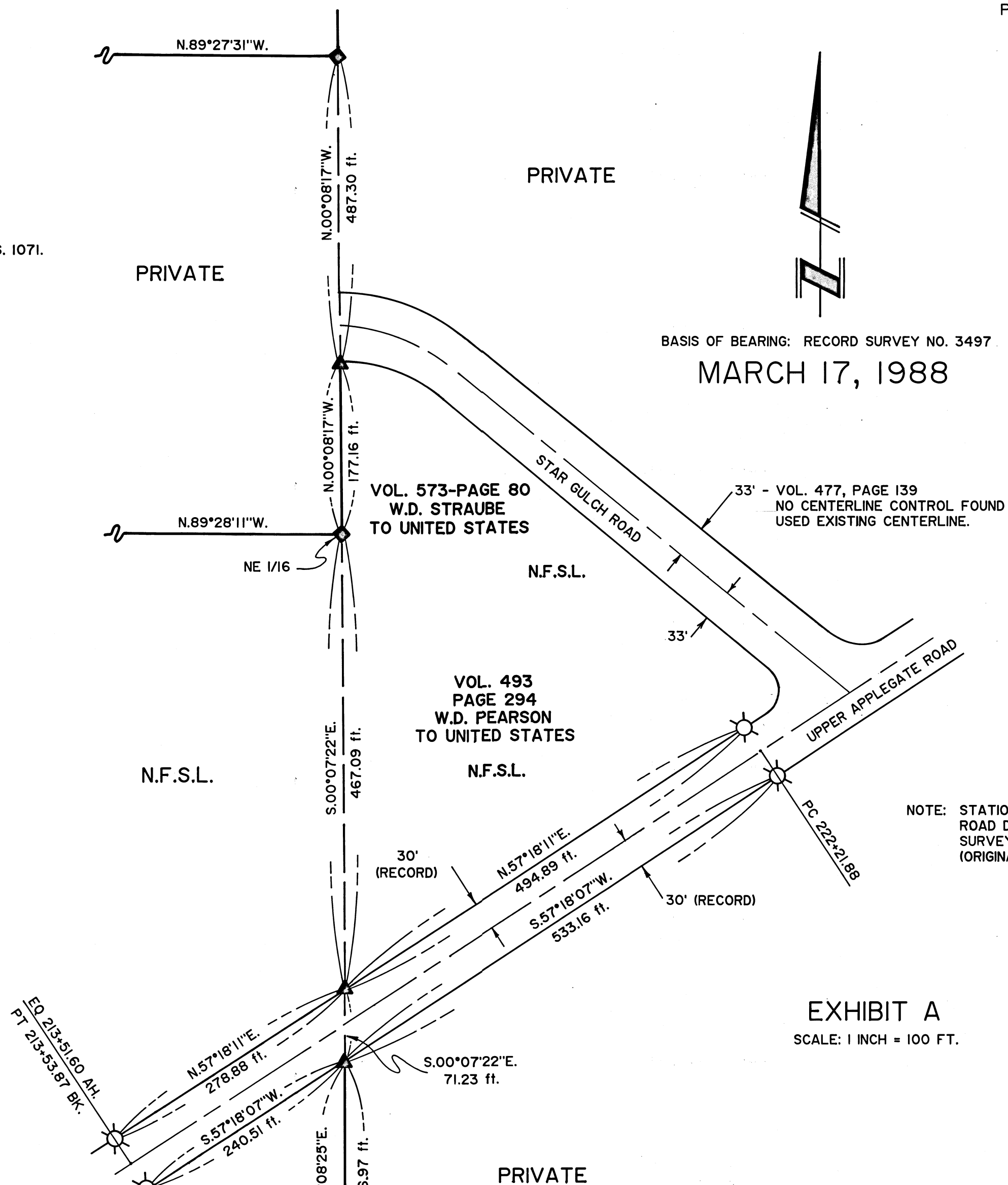


EXHIBIT B
SCALE: 1 INCH = 100 FT.



BASIS OF BEARING: RECORD SURVEY NO. 3497
MARCH 17, 1988

NOTE: STATIONING FOR UPPER APPLAGATE ROAD DOES NOT MATCH. COUNTY SURVEY = S.57°18'00\"/>

EXHIBIT A
SCALE: 1 INCH = 100 FT.

PROJECT NO. 87-3

U.S. DEPARTMENT OF AGRICULTURE
FOREST SERVICE
REGION 6 - ROGUE RIVER NATIONAL FOREST

DEPENDENT RESURVEY AND SECTION SUBDIVISION
Sec. 28, T.39S., R.3W., W.M.
JACKSON COUNTY, OREGON

REVIEWED BY: *John W. Bell* DATE: *4/27/88*
REVIEWED BY: *David L. Living* DATE: *4/28/88*

SURVEY NARRATIVE TO COMPLY WITH
PARAGRAPH 209.250 OREGON REVISED STATUTES

SURVEY FOR: Rogue River National Forest
P. O. Box 520
Medford, OR 97501

LOCATION : Section 28, Township 39 South, Range 3 West, Willamette
Meridian, Jackson County, Oregon

PURPOSE : To establish property corners, and mark and post the boundaries between
private and National Forest lands within the North 1/2 of Section 28

HISTORY OF: A portion of the original section subdivisional lines of Township 39 South,
SURVEYS Range 3 West, Willamette Meridian (including Section 28) were surveyed
by Sewall Truax under Contract No. 74, dated June 11, 1857.

The west boundary of Section 28 was resurveyed by Fred Mensch and Marshall Wright under Special Instructions for Group 31, dated August 19, 1916. While completing the subdivision of Township 39 South, Range 3 West, W.M. Surveyors Wright and Mensch were unable to locate the Truax one-quarter corner for Sections 28 and 29. Wright and Mensch resurveyed the west boundary of Section 28 and set corners of minimum control at proportionate distances for the west one-quarter corner Section 28 and east one-quarter corner Section 29. Wright and Mensch changed the Truax section corner for Sections 20, 21, 28 and 29 to one of minimum control for Sections 21 and 28 only, and set the section corner for 20 and 29 at proportionate distance.

Section 28 was subdivided by J. A. Hoffbuhr, RLS 222, for the USDA-Forest Service. Under terms of his contract, surveyor Hoffbuhr did not mark and post the property lines, and set only certain property corners in Section 28. Refer to record survey No. 3497, dated August 2, 1967.

A chronology of other surveys of record within Section 28 is as follows:

<u>Record Survey No</u>	<u>Mo/Day/Yr Date</u>	<u>Surveyor-Registration No.</u>
1740	6/29/61	E. McGinty - PLS 301
2388	1/06/64	E. McGinty - PLS 301
5150	3/22/73	J. A. Hoffbuhr- PLS 222
8807	4/24/81	J. A. Hoffbuhr- PLS 222
8947	4-5/81	M. Clark - PLS 601
8972	1/20/81	M. Clark - PLS 601
9002	6/16/81	R. Bath - PLS 1067

The one-quarter corner for Sections 27 and 28, and the section corner for Sections 21, 22, 27 and 28 were remonumented from original evidence by the Jackson County Surveyor in 1980.

No other surveys are of record.

PROCEDURE: Prior to commencement of this survey, an investigation of all controlling corners was made. After verifying all exterior controlling corners, a series of traverses was run, tying each found monument to a closed loop traverse. I then verified the position of all corners set by Surveyor Hoffbuhr during record Survey No. 3497. I found all of Hoffbuhr's monuments to be within acceptable limits and held the position of each.

I then ran a traverse along the north line of Section 28, establishing temporary positions for the east and west one-sixteenth corners, tying my traverse to the exterior control traverse.

Next, I re-established the position for the C-N-N 1/64 corner, utilizing Hofbuhr's witness corner. I held alignment between the witness corner and the center one-quarter and measured Hofbuhr's record distance to the C-N-N 1/64 position. The true point for this corner falls on the cut bank of Star Gulch Road. From this witness corner, a traverse was run southerly, establishing a temporary position for the CN 1/16 corner, and tying into the control traverse at the center one-quarter corner.

Corner moves were calculated and monuments were set for the east and west one-sixteenth corners for Sections 21 and 28, and for the center-north one-sixteenth corner for Section 28.

To identify Government ownership in the east half of the northeast one-quarter of Section 28, said parcel lying south of Star Gulch Road and west of upper Applegate Road, I tied the existing center line of each road to the control traverse for Section 28. The found right-of-way pins, as indicated in Exhibit A of the attached map of survey, were also tied to the control survey. A discrepancy was found in the stationing of upper Applegate Road at Station P.C. 222+21.88. Refer to county record for the map of survey for upper Applegate Road.

At the intersection of the north-south center line of the northeast one-quarter of Section 28, and the right-of-way limit for Star Gulch Road as described in Vol. 477 page 139, Deed of Records, I set a 5/8-inch diameter iron pin with an aluminum cap marked LINE MON. LS1071.

At the intersection of the north-south center line of the northeast one-quarter of Section 28, and the existing right-of-way limits as found in the field of upper Applegate Road, I set 5/6-inch diameter iron pins with aluminum caps marked LINE MON. LS1071.

The description for the Government land in the northeast one-quarter Section 28 lying south of Star Gulch Road and west of upper Applegate Road can be found in Deed of Records Vol. 573, page 80 and Vol. 493, page 294.

The property boundaries, where indicated on the attached map of survey, were posted with six-foot aluminum posts with property boundary signs attached. Trees along line were blazed and painted with red, timber-marking paint. The property boundaries along the right-of-way limits of Star Gulch Road and upper Applegate Road were not posted or blazed.

Basis of
Bearing: Record Survey No. 3497 from C1/4 to CE1/16 Section 28

Equipment
Used: Sokkisha Red 2L Electronic Distance Meter and Wild T-2
Theodolite

CORNERS ACCEPTED FOR CONTROL

The one-quarter corner for Sections 27 and 28, Township 39 South, Range 3 West, Willamette Meridian.

At the corner point, I found a Jackson County Surveyor monument marked:

T39S	R3W	
28	27	1980
	1/4S	
	CS	

and the following accessories:

A 17-inch diameter oak bears N.29°59'31"E., 31.70 feet distance, with a healed blaze.

A 13-inch diameter oak bears N.63°50'31"W., 38.79 feet distance, with a healed blaze.

An 18-inch diameter fir bears S.14°00'31"W., 21.82 feet distance, with a healed blaze.

NOTE: A 5/8-inch diameter unrecorded iron pin bears east 0.60 feet distance.

The section corner for Sections 21, 22, 27 and 28, Township 39 South, Range 3 West, Willamette Meridian.

At the corner point, I found a Jackson County Surveyor monument marked:

JACKSON COUNTY		
T39S	R3W	
21	22	1980
28	27	

and the following accessories:

A 13-inch diameter oak bears N.85°03'20"W., 64.82 feet distance, with a healed blaze.

A 32-inch diameter oak bears N.26°07'20"W., 36.96 feet distance, with a decayed face - no marks visible.

A 29-inch diameter oak bears N.17°32'40"E., 104.65 feet distance, with a hollow trunk - no marks visible.

A 19-inch diameter oak bears N.52°26'40"E., 94.01 feet distance, with a healed blaze.

A 24-inch diameter pine bears S.37°57'20"E., 64.23 feet distance, with a healed blaze.

The one-quarter corner for Sections 21 and 28, Township 39 South, Range 3 West, Willamette Meridian.

At the corner point, I found a 2 7/8-inch diameter iron post with a 2 1/4-inch diameter brass disk inside, marked:

1/4 ——— S21
 S28

 1967
 RLS 222
 ORE

and the following accessories:

A 12-inch diameter fir bears S.83°47'14"W., 4.85 feet distance. This tree is now dead.

A 15-inch diameter oak bears N.09°32'14"E., 16.60 feet distance, with a decayed face - no marks visible.

A 22-inch diameter fir bears N.25°52'14"E., 31.06 feet distance, with a healed blaze.

I marked the following accessory:

A 14-inch diameter pine bears S.62°06'46"E., 52.20 feet distance, scribed 1/4S28LS1071 BT.

The section corner for Sections 21, 28 and 29, Township 39 South, Range 3 West, Willamette Meridian.

At the corner point, I found a General Land Office monument marked:

GENERAL LAND OFFICE
 T39S R3W
 | 21
 | 28

 1917
 -SURVEY-

and the following accessories:

A 20-inch diameter oak bears N.11°19'52"E., 56.62 feet distance, with a double healed blaze.

A 7-inch diameter oak bears N.44°51'52"E., 24.08 feet distance, with a double healed blaze.

A 17-inch diameter pine bears S.34°28'08"E., 8.40 feet distance, with fragmentary scribing on a double blaze.

NOTE: The section corner for Sections 20, 21 and 29, with accessories, bears N.02°23'14"E., 75.52 feet distance. This monument is also a 1917 General Land Office monument.

The west one-quarter corner for Section 28 only.

At the corner point, I found a General Land Office monument marked:

GENERAL LAND OFFICE
 1/4
 | S28
 |
 1917
 -SURVEY-

and the following accessories:

An 18-inch diameter pine bears N.45°46'28"E., 33.90 feet distance, with scribing CS B visible on a partly-healed blaze.

An 8-inch diameter madrone bears S.07°14'32"E., 12.24 feet distance, with scribing CS BT visible on a partly-healed blaze.

NOTE: The east one-quarter corner for Section 29 bears N.00°35'28"W., 58.37 feet distance. This monument is also a 1917 General Land Office monument.

The one-quarter corner for Sections 28 and 33, Township 39 South, Range 3 West, Willamette Meridian.

At the corner point, I found a 2 7/8-inch diameter iron post with a 2 1/2-inch diameter brass disk inside, marked:

1/4 $\frac{S28}{S33}$
 1967
 RLS 222
 ORE

and the following accessories:

A 16-inch diameter oak bears N.09°42'29"W., 4.15 feet distance, with a healed blaze.

A 14-inch diameter oak bears N.61°28'31"E., 30.70 feet distance, with a healed blaze.

A 12-inch diameter oak bears S.06°39'29"E., 21.60 feet distance, with axe marks visible on a partly-healed blaze.

A 7-inch diameter oak bears S.13°40'31"W., 47.10 feet distance, with a healed blaze.

NOTE: A 5/8-inch diameter threaded iron pipe bears southeast 1.00 feet.

The center one-quarter for Section 28, Township 39 South, Range 3 West, Willamette Meridian.

At the corner point, I found a 2 7/8-inch diameter iron post with a 2 1/4-inch diameter brass disk inside, marked:

C 1/4 S28

1967
 RLS 222
 ORE

and the following accessories:

A 15-inch diameter fir bears N.77°21'26"E., 29.16 feet distance, with a healed blaze.

A 16-inch diameter fir bears S.13°51'26"W., 23.78 feet distance, with a healed blaze. (This tree has a barbed-wire fence nailed to the west side.)

NOTE: A 3/4-inch diameter iron pipe bears N.01°18'33"E., 18.67 feet distance.

Center-west one-sixteenth corner for Section 28, Township 39 South, Range 3 West, Willamette Meridian.

At the corner point, I found 5/8-inch diameter iron pin set by J. A. Hoffbuhr, R.L.S. No. 222, per record Survey No. 5150, dated February 22, 1973.

Directly over top of iron pin, I set a 2 1/2-inch diameter by 32-inch long iron post, with a 2 1/2-inch brass cap monument marked:

T39S R3W
 W 1/16
 C ————— C
 S28
 1988
 LS1071

and mark the following accessories:

A 6-inch diameter fir bears N.27°57'47"W., 16.95 feet distance, scribed X BT.

A 15-inch diameter fir bears S.38°43'13"W., 25.03 feet distance, scribed CW 1/16 S28LS1071 BT.

The witness corner for the center-east one-sixteenth corner position, Section 28, Township 39 South, Range 3 West, Willamette Meridian.

At the witness corner point, I found a 2 7/8-inch diameter iron post with a 2 1/4-inch diameter brass disk inside, marked:

WC
E 1/16
C ————— C
1967
RLS 222
ORE

and the following accessories:

A 15-inch diameter oak bears N.00°01'01"E., 44.13 feet distance, with a healed blaze.

A 16-inch diameter oak bears S.16°04'01"W., 56.99 feet distance, with a healed blaze.

NOTE: This tree is being used as a fence corner.

NOTE: From the true corner point for the center-east one-sixteenth corner, said point being in the Applegate River, the above-mentioned witness corner bears S.89°27'42"E., 65.00 feet distance.

A witness point, which is a 2 1/2-inch diameter brass disk set in bedrock and marked:

WITNESS
—————→
93.34
Point
1967
RLS 222
ORE

bears N.89°28'11"W., 93.15 feet distance from the center-east one-sixteenth position.

A witness point, which is a 2 1/2-inch diameter brass disk set in bedrock and marked:

WITNESS POINT
124.38 | Feet
 ↓
 1967
 RSL 222
 ORE

bears N.00°01'53"W., 124.33 feet distance from the center-east one-sixteenth corner position.

REFER to the attached map of survey for a diagram of these monuments.

The witness corner for the center-north-north 1/64 corner, Section 28, Township 39 South, Range 3 West, Willamette Meridian.

At the witness corner point, I found a 2 7/8-inch diameter iron post with a 2 1/4-inch diameter brass disk inside, marked:

WC
 C
 CNN 1/64 | S28
 C
 1967
 RLS 222
 ORE

No accessories found.

NOTE: The above-mentioned witness corner bears N.00°07'23"W., 25.00 feet distance from the center-north-north 1/64 position, which falls on the side of a cutbank - Star Gulch Road.

The northeast one-sixteenth corner for Section 28, Township 39 South, Range 3 West, Willamette Meridian.

At the corner point, I found a 2 7/8-inch diameter iron post with a 2 1/4-inch diameter brass disk inside marked:

NE 1/16 S28
 1967
 RSL 222
 ORE

and the following accessories:

A 15-inch diameter fir bears N.58°59'20"W, 30.30 feet distance, with a healed blaze.

A 7-inch diameter oak bears N.41°16'40"E., 31.86 feet distance, with scribing NE 1/16 S28 visible.

NOTE: A 5/8-inch diameter iron pin set this survey with an aluminum cap marked:

LINE
 MON.
 LS 1071

bears N.00°08'17"W., 177.16 feet distance. Refer to plat for locations of line monuments set on right-of-way limits for existing roads.

The center-north northeast 1/64 corner for Section 28, Township 39 South, Range 3 West, Willamette Meridian.

At the corner point, I found a 2 7/8-inch diameter iron post with a 2 1/4-inch diameter brass disk inside, marked:

S28
CNNE

1/64
1967
RLS 222
ORE

no accessories found.

NOTE: A 3/4-inch diameter iron pipe bears West, 1.00 feet distance.

CORNERS ESTABLISHED THIS SURVEY

The center-north one-sixteenth corner for Section 28, Township 39 South, Range 3 West, Willamette Meridian.

At the corner point, I set a 2 1/2-inch diameter by 32-inch long iron post, with a 2 1/2-inch diameter brass cap monument marked:

T39S R3W
C
N 1/16 | S28
C
1988
LS 1071

and mark the following accessories:

A 9-inch diameter oak bears S.72°56'58"W., 13.82 feet distance, scribed CN 1/16 S28LS1071 BT.

A 14-inch diameter fir bears S.66°37'02"E., 21.40 feet distance, scribed CN 1/16S28 LS1071 BT.

The east one-sixteenth corner for Sections 21 and 28, Township 39 South, Range 3 West, Willamette Meridian.

At the corner point, I set a 2 1/2-inch diameter by 32-long iron post with a 2 1/2-inch diameter brass cap monument marked:

T39S R3W
S21
E 1/16 _____

S28
1988
LS 1071

and mark the following accessories:

A 17-inch diameter pine bears S.10°15'28"W., 52.71 feet distance, scribed E 1/16 S28 LS1071 BT.

A 13-inch diameter fir bears N.78°29'32"W., 9.92 feet distance, scribed E 1/16 S21 LS1071 BT.

The west one-sixteenth corner for Sections 21 and 28, Township 39 South, Range 3 West, Willamette Meridian.

At the corner point, I set a 2 1/2-inch diameter by 32-inch long iron post with a 2 1/2-inch diameter brass cap monument marked:

T39S R3W
S21
W 1/16 _____
S28
1988
LS 1071

and mark the following accessories:

A 15-inch diameter fir bears S.85°43'56"W., 28.68 feet distance, scribed W 1/16S28 LS1071 BT.

A 12-inch diameter pine bears N.39°30'04"W., 14.26 feet distance, scribed W 1/16S21 LS1071 BT.

March 17, 1988

HAROLD L. CENTER
Registered Professional Land Surveyor
Oregon Certificate No. 1071

REGISTERED
PROFESSIONAL
LAND SURVEYOR

Harold L. Center
OREGON
HAROLD L. CENTER
JULY 30, 1976
No. 1071

** RECEIVED **
Date 4-29-88 By SK
This survey Consists of:
2 sheet(s) Map
10 page(s) Narrative
JACKSON COUNTY
SURVEYOR